



ELEVATION L

ABOUT THE DANIEL

A charming covered porch gives the ranch-style Daniel plan ample curb appeal. Inside, you'll find an expansive great room, an inviting kitchen with a center island and nook, and a study that can be optioned as an additional bedroom. A lavish owner's suite features an attached bath and an oversized walk-in closet and is separated from two secondary bedrooms for privacy. Other highlights include a central laundry and a relaxing patio. Personalize this plan with a gourmet kitchen, sunroom, tech center, deluxe owner's bath, 3-car garage and more!



ELEVATION K



ELEVATION M

HOME GALLERY LOCATION:

Jacksonville Home Gallery™ | 10255 Fortune Parkway, Suite 150 | Jacksonville, FL 32256 | **904.541.2555**

*This information is presented for education purposes only. The HERS index for a confirmed rating will be determined by a third-party HERS rater based on data gathered from on-site observations and, if required, testing of rated features for a home as featured, optioned, located, oriented and/or built.

+Standard new home is based on the RESNET® Reference Home definition with a HERS® index of 100 (based on the 2006 International Energy Conservation Code).

++Typical resale home is based on the U.S. Department of Energy definition with a HERS® index of 130.

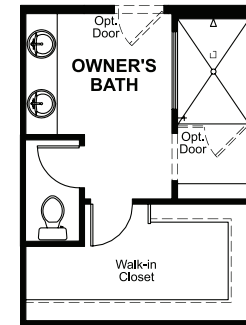
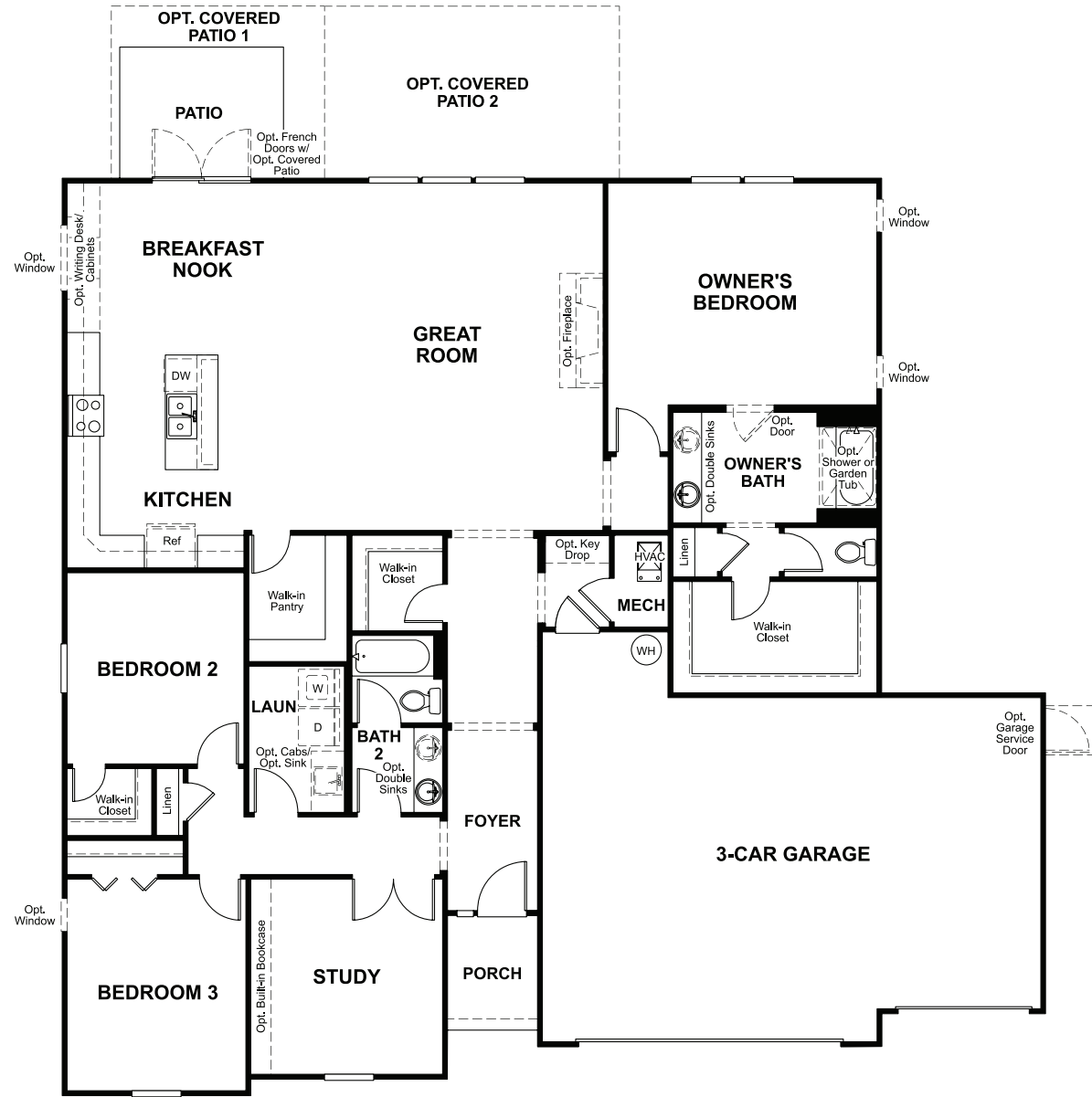
^RESNET® has developed the HERS® index to indicate the comparative efficiencies of homes. It is no guarantee that energy efficiencies will be achieved.



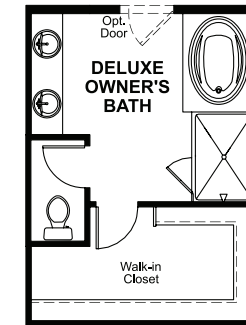
Floor plans and renderings are conceptual drawings and may vary from actual plans and homes as built. Options and features may not be available on all homes and are subject to change without notice. Actual homes may vary from photos and/or drawings which show upgraded landscaping and may not represent the lowest-priced homes in the community. Features may include optional upgrades and may not be available on all homes. Square footage numbers are approximate and are subject to change without notice. ©2022 Richmond American Homes, Richmond American Homes of Florida, LP, CBC1257429 10/12/2022

MAIN FLOOR

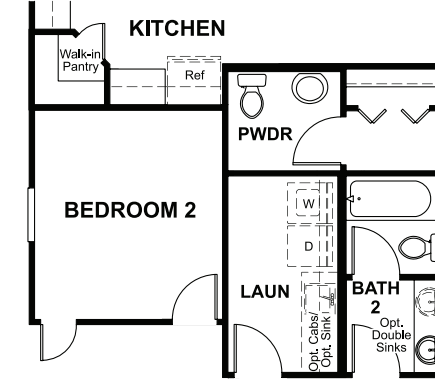
MAIN FLOOR OPTIONS



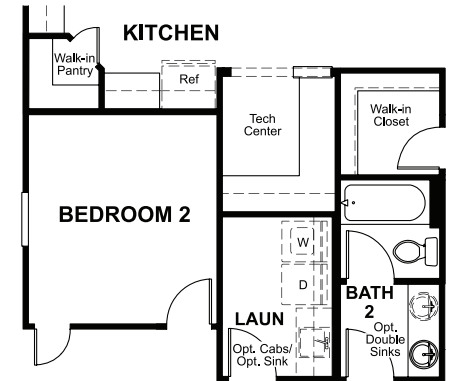
OPT. WALK-IN SHOWER



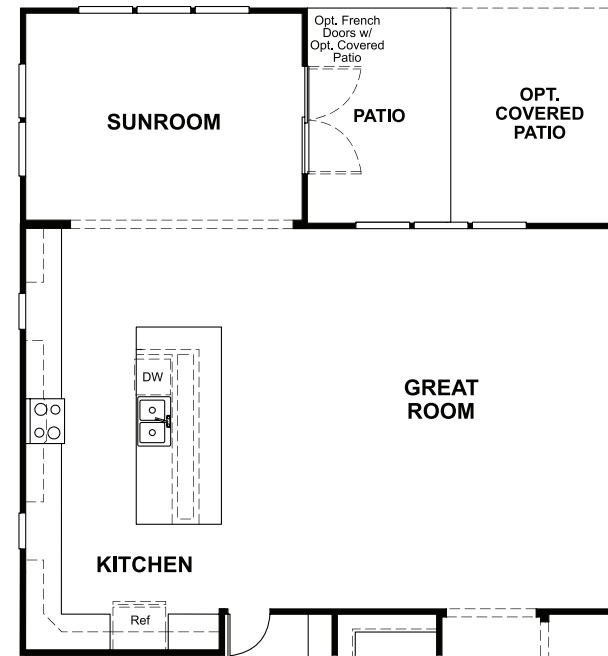
OPT. DELUXE OWNER'S BATH



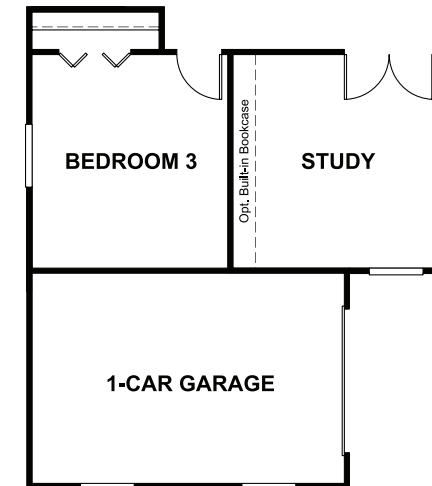
OPT. POWDER ROOM



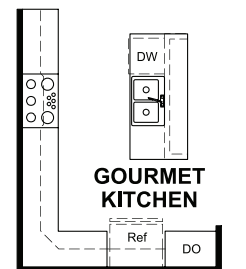
OPT. TECH CENTER



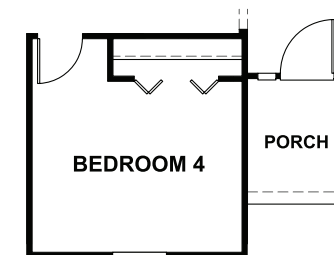
OPT. SUNROOM



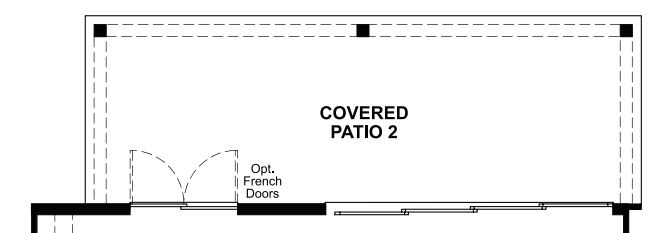
OPT. SIDE-ENTRY GARAGE



OPT. GOURMET KITCHEN



OPT. BEDROOM 4



OPT. MULTI-SLIDE DOOR

THIS PLAN'S PROJECTED **HERS® INDEX = 65***

Projected Rating Based on Plans – Field Confirmation required

How does this floor plan rate?

Take a look: **100** = Standard new home+ **130** = Typical resale Home++
The lower number, the better! Refer to the RESNET® HERS index brochure or go to www.RESNET.us and www.HERSindex.com

What's a HERS® Index? HERS stands for Home Energy Rating System, a system created by RESNET® to measure home energy efficiency.^\

A Projected HERS index or rating is a computer simulation performed prior to construction by a third-party HERS rater using RESNET-accredited rating software, rated feature and specification data derived from home plans, features and specifications, and other data selected or assumed by the rater. The projected HERS index is approximate and is subject to change without notice. Actual results will vary.