

Summer Hill
EVERETTE



Elevation A

Approx. square feet: 1,600
Stories: 2
Bedrooms: 3
Garage: 2-car
Plan Number: L160

The Everette plan offers a spacious main floor with a great room, a built-in pantry, and ample storage space. Upstairs, you'll find three inviting bedrooms, including a master suite with walk-in closet. Options include a loft and a deluxe master bath.

Available elevations:



Elevation A



Elevation B



Elevation C

COMMUNITY LOCATION

Cactus Avenue and Mann Street
 Las Vegas, NV 89141
 702-638-4440

HOME GALLERY

7770 South Dean Martin Drive, Suite 308
 Las Vegas, NV 89139
 702-617-8400



COMMUNITY LOCATION

Cactus Avenue and Mann Street
 Las Vegas, NV 89141
 702-638-4440

HOME GALLERY

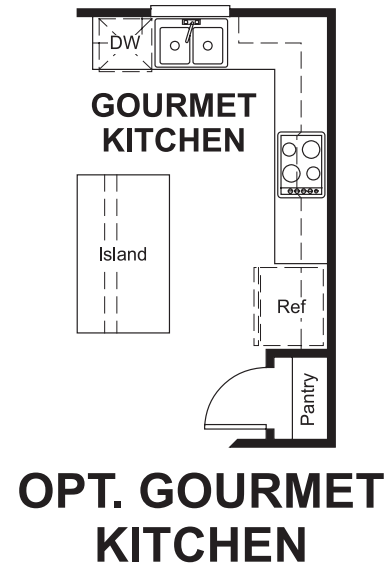
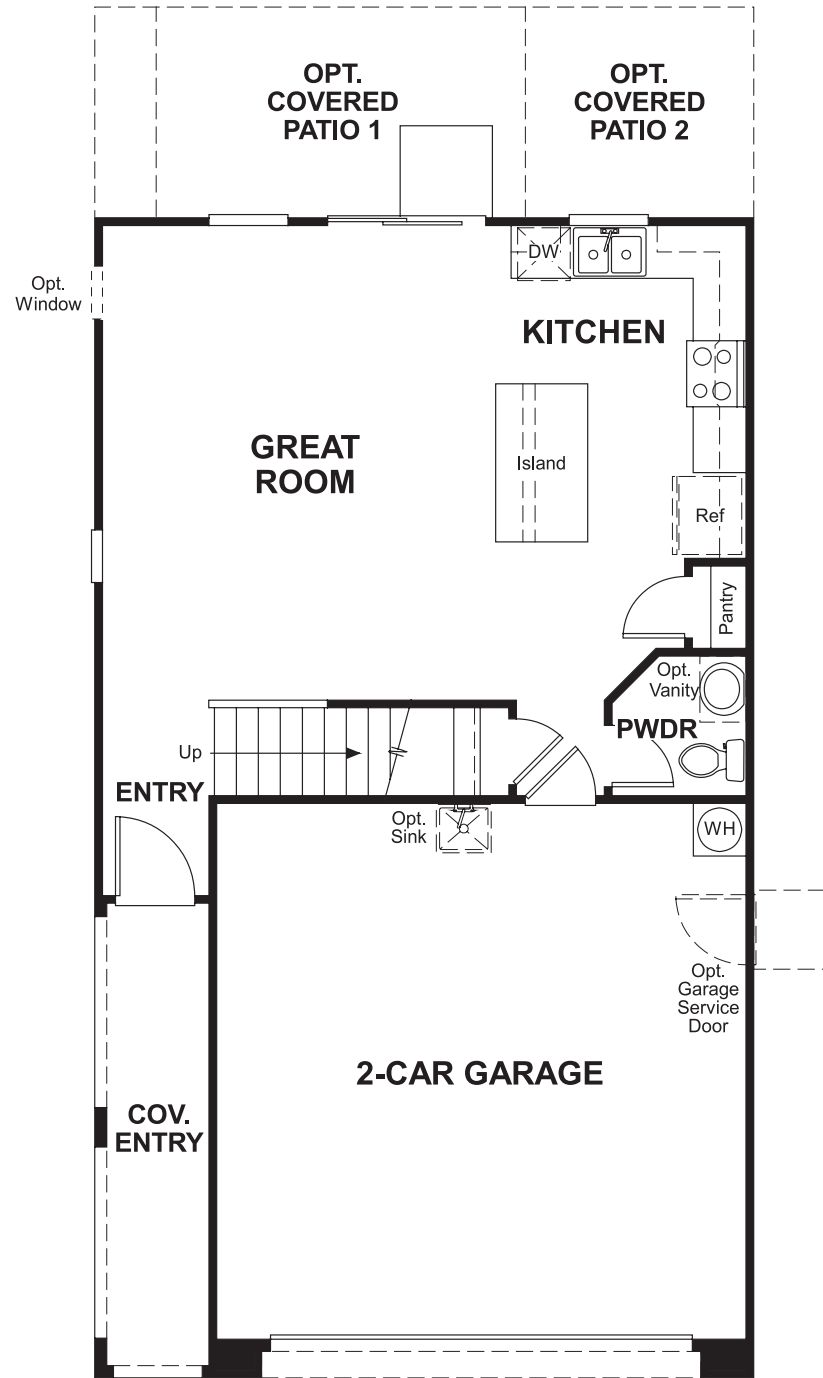
7770 South Dean Martin Drive, Suite 308
 Las Vegas, NV 89139
 702-617-8400

Summer Hill
EVERETTE

Approx. square feet: 1,600
Stories: 2
Bedrooms: 3

Garage: 2-car
Plan Number: LI60

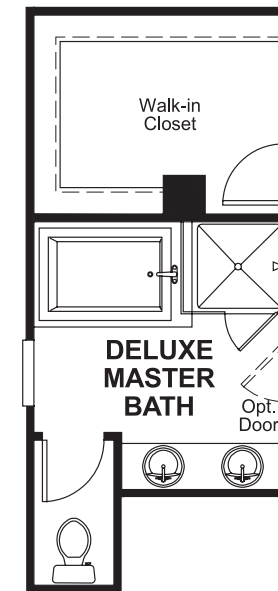
Floor Plan
Main Floor



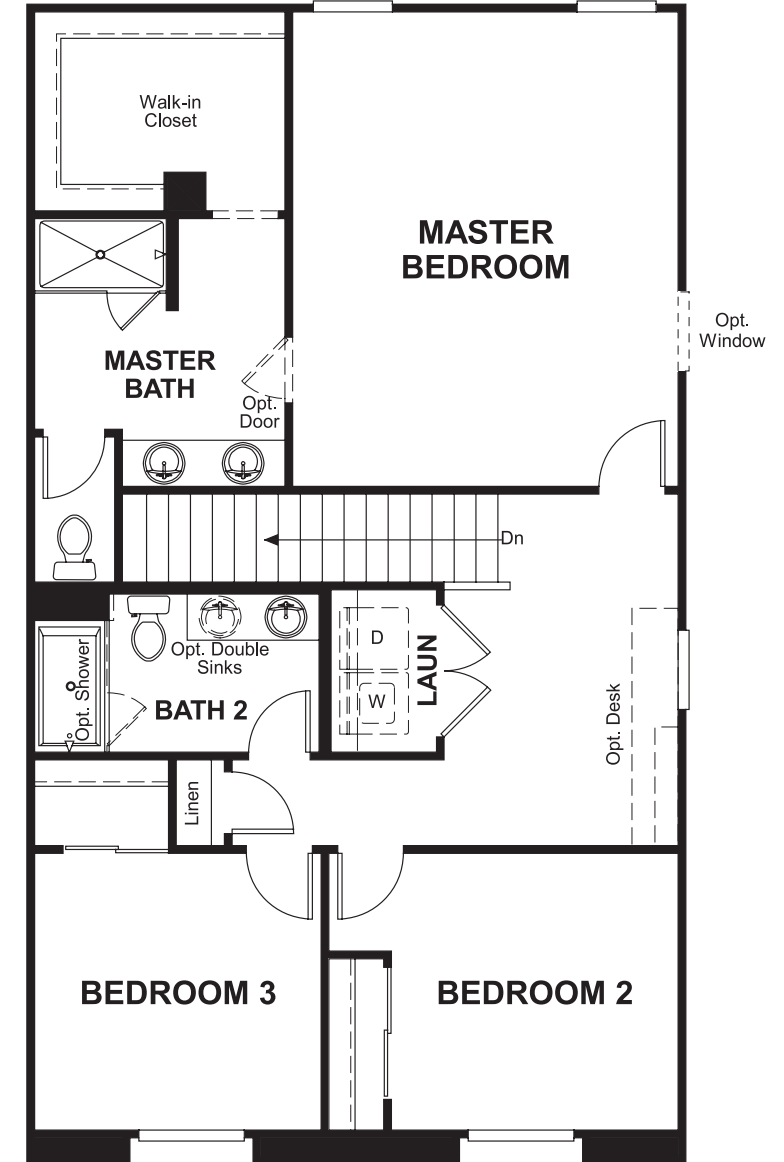
Floor Plan
Second Floor



**OPT. MASTER BATH
W/ WALK-IN SHOWER**



**OPT. DELUXE
MASTER BATH**



**THIS PLAN'S PROJECTED
HERS® INDEX = 63***
Projected Rating Based on Plans – Field Confirmation Required

How does this floor plan rate?
Take a look: **100** = Standard new home* **130** = Typical resale home**
The lower the number, the better! Refer to the RESNET® HERS index brochure or go to www.RESNET.us for details.

What's a HERS® Index? HERS stands for Home Energy Rating System, a system created by RESNET® to measure home energy efficiency.[^]
A Projected HERS index or rating is a computer simulation performed prior to construction by a third-party HERS rater using RESNET-accredited rating software, rated feature and specification data derived from home plans, features and specifications, and other data selected or assumed by the rater. The projected HERS index is approximate and is subject to change without notice. Actual results will vary.

*This information is presented for education purposes only. The HERS index for a confirmed rating will be determined by a third-party HERS rater based on data gathered from on-site observations and, if required, testing of rated features for a home as featured, optioned, located, oriented and/or built.
+Standard new home is based on the RESNET® Reference Home definition with a HERS® index of 100 (based on the 2006 International Energy Conservation Code).
++Typical resale home is based on the U.S. Department of Energy definition with a HERS® index of 130.

[^]RESNET® has developed the HERS® index to indicate the comparative efficiencies of homes. It is no guarantee that energy efficiencies will be achieved.