

Ocean Terrace  
**BENJAMIN**



**Elevation N**

**Approx. square feet:** 3,050

**Stories:** 2

**Bedrooms:** 4 - 6

**Garage:** 2-car w/ tandem

**Plan Number:** J31B

The beautiful Benjamin plan was designed to fit your lifestyle, with a private study, a formal dining room, an open great room and an inviting gourmet kitchen with center island and breakfast nook. Upstairs, you'll find a convenient laundry, a versatile loft and four generous bedrooms, including a lavish master suite with deluxe bath. Need more living space? Both the upstairs loft and the tandem space in the garage can be optioned as extra bedrooms!

**Available elevations:**



**Elevation N**



**Elevation P**



**Elevation Q**

**COMMUNITY LOCATION**

4082 Seaside Drive  
Jacksonville Beach, FL 32250  
904-541-2555

**HOME GALLERY**

1560 Wells Road, Building A  
Orange Park, FL 32073  
800-221-3014



**COMMUNITY LOCATION**

4082 Seaside Drive  
Jacksonville Beach, FL 32250  
904-541-2555

**HOME GALLERY**

1560 Wells Road, Building A  
Orange Park, FL 32073  
800-221-3014

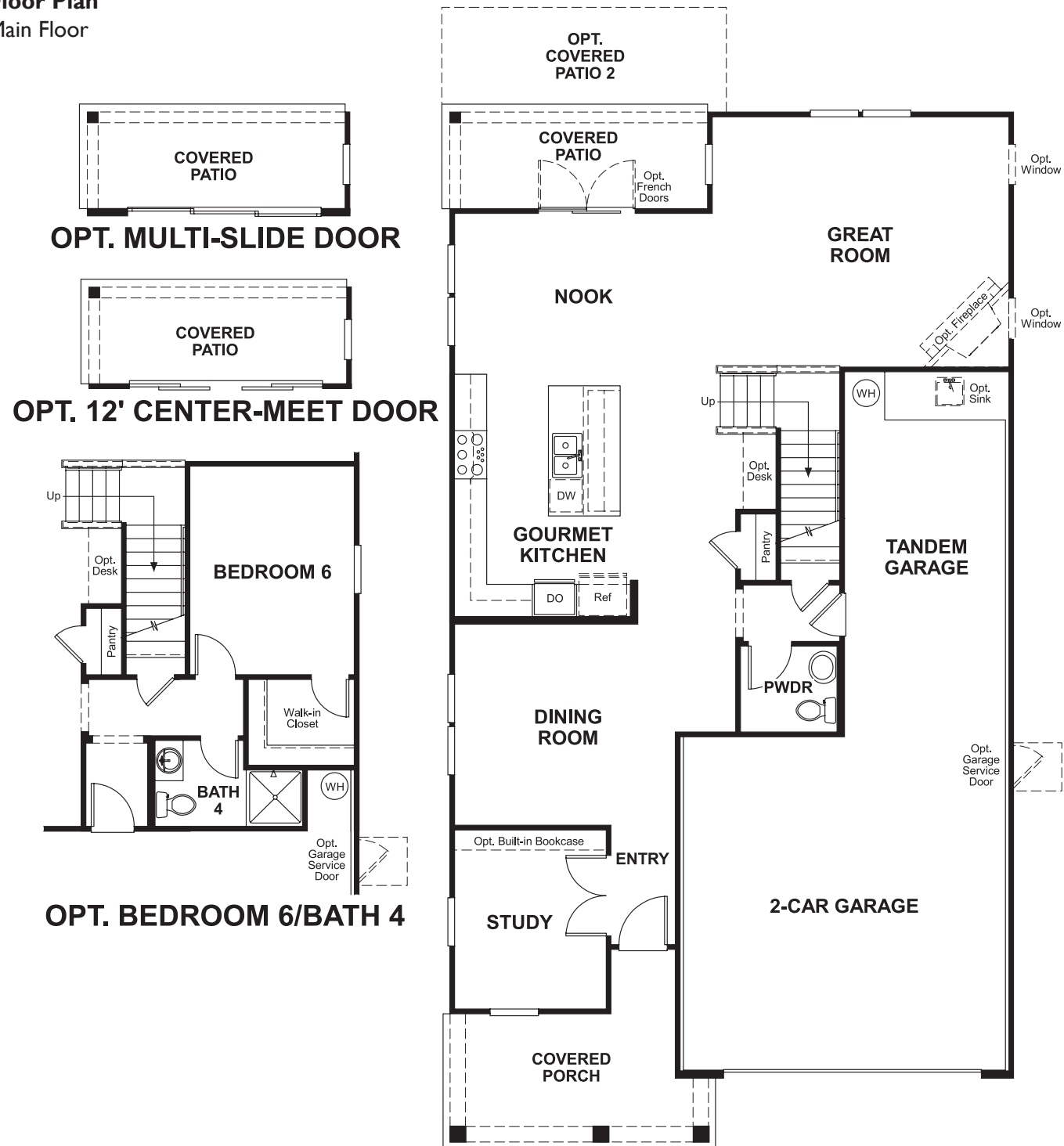


Ocean Terrace  
**BENJAMIN**

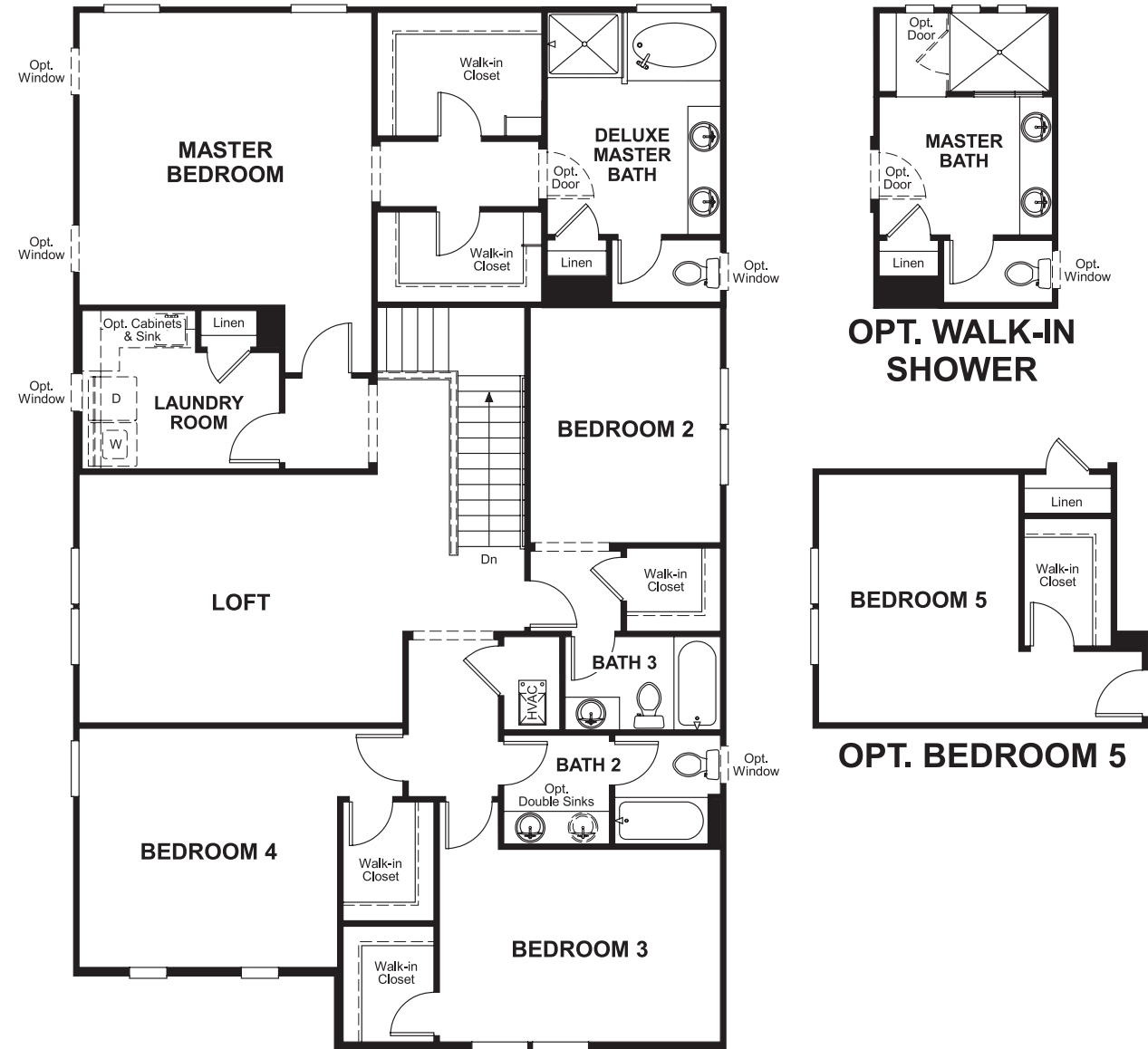
Approx. square feet: 3,050  
Stories: 2  
Bedrooms: 4 - 6

Garage: 2-car w/ tandem  
Plan Number: J31B

**Floor Plan**  
Main Floor



**Floor Plan**  
Second Floor



**THIS PLAN'S PROJECTED HERS® INDEX = 59\***  
Projected Rating Based on Plans – Field Confirmation Required

**How does this floor plan rate?**  
Take a look: 100 = Standard new home\* 130 = Typical resale home\*\*  
The lower the number, the better! Refer to the RESNET® HERS index brochure or go to [www.RESNET.us](http://www.RESNET.us) for details.

**What's a HERS® Index?** HERS stands for Home Energy Rating System, a system created by RESNET® to measure home energy efficiency. A Projected HERS index or rating is a computer simulation performed prior to construction by a third-party HERS rater using RESNET-accredited rating software, rated feature and specification data derived from home plans, features and specifications, and other data selected or assumed by the rater. The projected HERS index is approximate and is subject to change without notice. Actual results will vary.

\*This information is presented for education purposes only. The HERS index for a confirmed rating will be determined by a third-party HERS rater based on data gathered from on-site observations and, if required, testing of rated features for a home as featured, optioned, located, oriented and/or built.  
+Standard new home is based on the RESNET® Reference Home definition with a HERS® index of 100 (based on the 2006 International Energy Conservation Code).  
\*\*Typical resale home is based on the U.S. Department of Energy definition with a HERS® index of 130.

^RESNET® has developed the HERS® index to indicate the comparative efficiencies of homes. It is no guarantee that energy efficiencies will be achieved.