

Ocean Terrace
FLEMING



Elevation N

Available elevations:



Elevation N



Elevation P



Elevation Q

Approx. square feet: 2,200

Stories: 2

Bedrooms: 3 - 5

Garage: 2-car

Plan Number: J597

The Fleming plan greets guests with a grand two-story entry, and continues to impress with a private study, an open dining room and an expansive great room with an optional fireplace. You'll also appreciate the well appointed gourmet kitchen, which boasts a central island, a walk-in pantry and an adjacent patio. Upstairs, enjoy a large loft and an elegant master suite with a deluxe bath. Other personalization options include additional bedrooms in lieu of the study and loft.

COMMUNITY LOCATION

4082 Seaside Drive
Jacksonville Beach, FL 32250
904-541-2555

HOME GALLERY

1560 Wells Road, Building A, Suite 105
Orange Park, FL 32703
800-221-3014



COMMUNITY LOCATION

4082 Seaside Drive
Jacksonville Beach, FL 32250
904-541-2555

HOME GALLERY

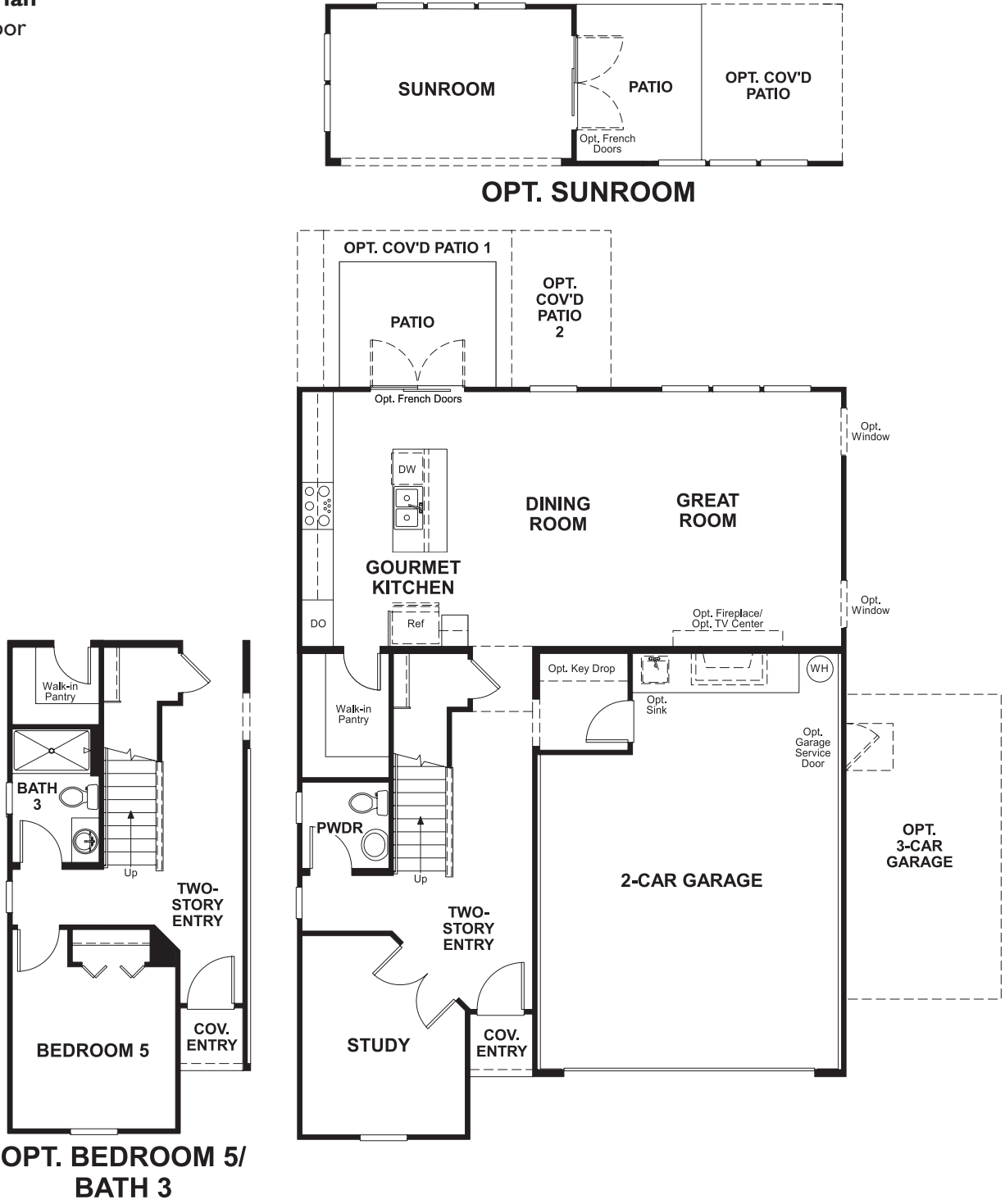
1560 Wells Road, Building A, Suite 105
Orange Park, FL 32703
800-221-3014



Ocean Terrace
FLEMING

Approx. square feet: 2,200
Stories: 2
Bedrooms: 3 - 5
Garage: 2-car
Plan Number: J597

Floor Plan
Main Floor



**THIS PLAN'S PROJECTED
HERS® INDEX = 62**
Projected Rating Based on Plans – Field Confirmation Required

*** How does this floor plan rate?**
Take a look: **100** = Standard new home* **130** = Typical resale home**
The lower the number, the better! Refer to the RESNET® HERS index brochure or go to **www.RESNET.us** for details.

Floor Plan
Second Floor



What's a HERS® Index? HERS stands for Home Energy Rating System, a system created by RESNET® to measure home energy efficiency.^\nA Projected HERS index or rating is a computer simulation performed prior to construction by a third-party HERS rater using RESNET-accredited rating software, rated feature and specification data derived from home plans, features and specifications, and other data selected or assumed by the rater. The projected HERS index is approximate and is subject to change without notice. Actual results will vary.

*This information is presented for education purposes only. The HERS index for a confirmed rating will be determined by a third-party HERS rater based on data gathered from on-site observations and, if required, testing of rated features for a home as featured, optioned, located, oriented and/or built.
+Standard new home is based on the RESNET® Reference Home definition with a HERS® index of 100 (based on the 2006 International Energy Conservation Code).
++Typical resale home is based on the U.S. Department of Energy definition with a HERS® index of 130.

^RESNET® has developed the HERS® index to indicate the comparative efficiencies of homes. It is no guarantee that energy efficiencies will be achieved.