

Whispering Meadows
LAUREN



Elevation B

Approx. square feet: 2,150
Stories: 2
Bedrooms: 3 - 6
Garage: 2-car
Plan Number: W21L

The Lauren plan greets guests with a charming covered front porch. The main floor offers a spacious great room with optional fireplace, an open dining room, an inviting kitchen with a center island and optional gourmet or chef's features and a quiet study that can be optioned as an extra bedroom. Upstairs, you'll find a convenient laundry and a relaxing master suite with optional deluxe bath.

Available elevations:



Elevation B



Elevation C



Elevation E

COMMUNITY LOCATION
 3215 102nd Avenue Northeast
 Lake Stevens, WA 98258
 425-654-0132

HOME GALLERY
 20829 72nd Avenue South, Suite 115
 Kent, WA 98032
 253-446-7277



COMMUNITY LOCATION
 3215 102nd Avenue Northeast
 Lake Stevens, WA 98258
 425-654-0132

HOME GALLERY
 20829 72nd Avenue South, Suite 115
 Kent, WA 98032
 253-446-7277

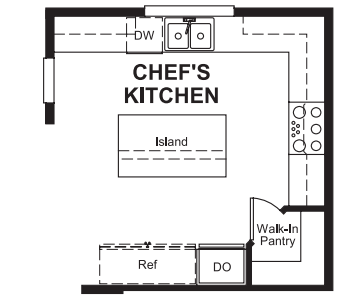
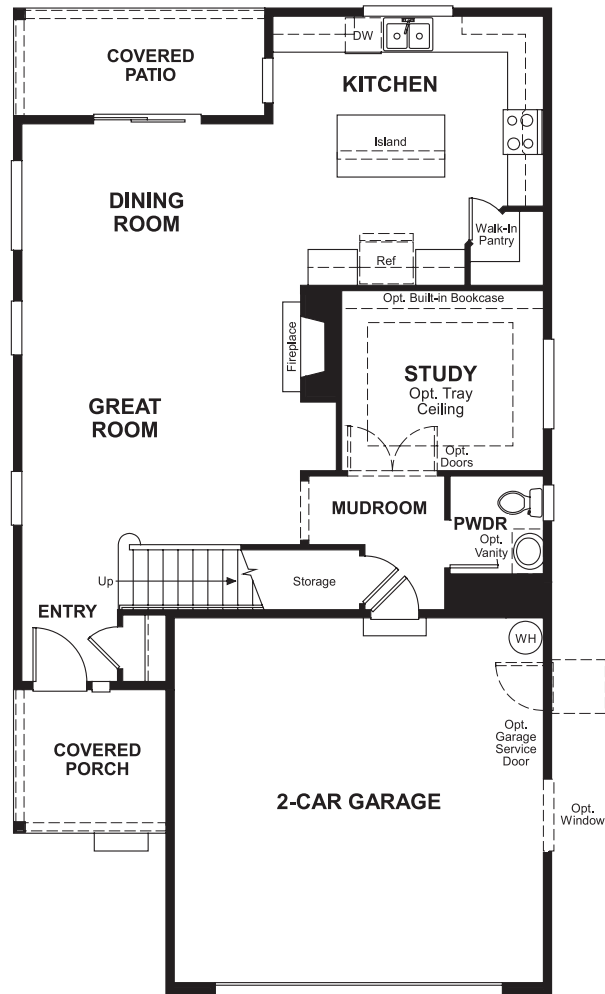


Whispering Meadows
LAUREN

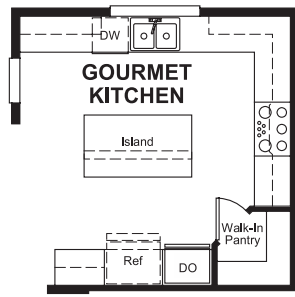
Approx. square feet: 2,150
Stories: 2
Bedrooms: 3 - 6

Garage: 2-car
Plan Number: W21L

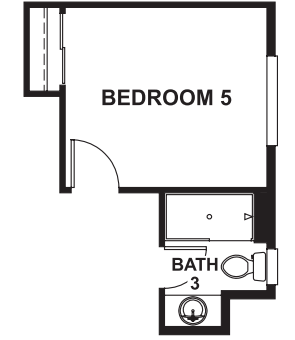
Floor Plan
Main Floor



OPT. CHEF'S KITCHEN

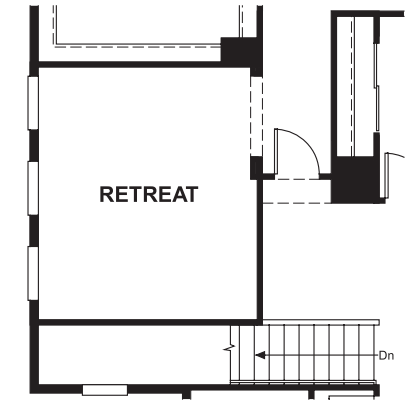


OPT. GOURMET KITCHEN

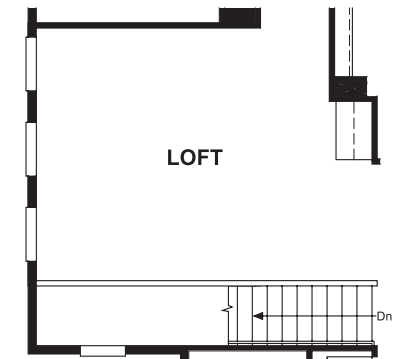


**OPT. BEDROOM 5/
BATH 3**

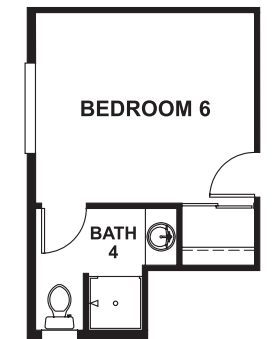
Floor Plan
Second Floor



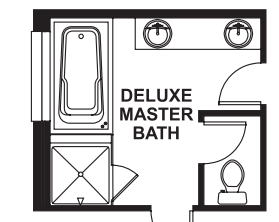
OPT. MASTER RETREAT



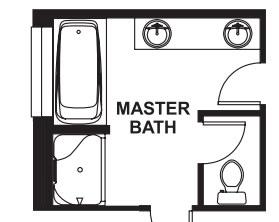
OPT. LOFT



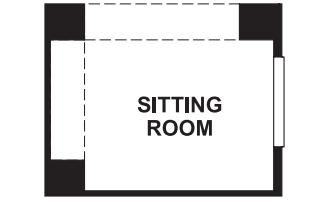
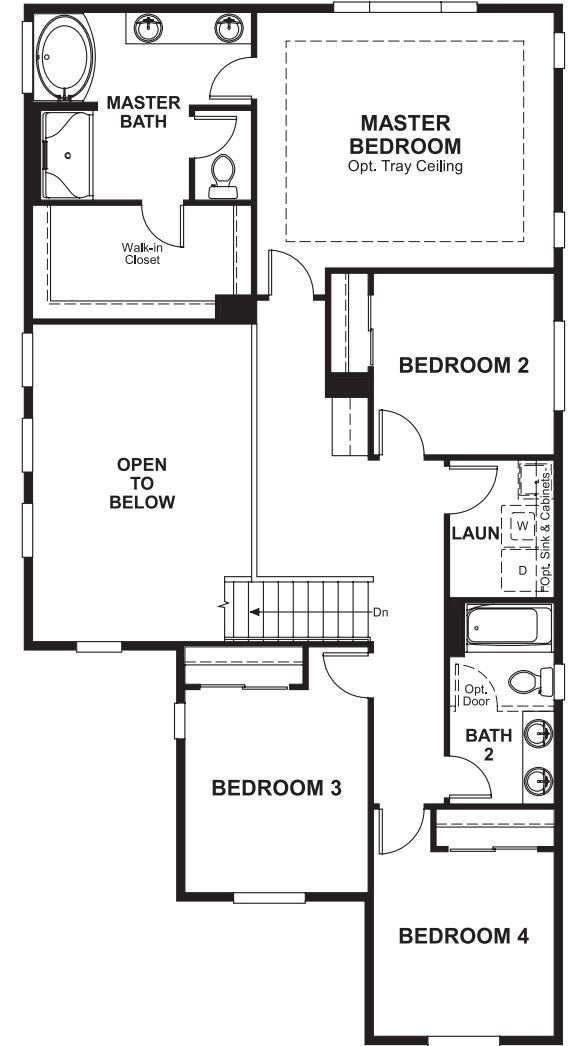
**OPT. BEDROOM 6/
BATH 4**



**OPT. DELUXE
MASTER BATH**



**OPT. MASTER
BATH W/ 6' TUB**



OPT. SITTING ROOM

**THIS PLAN'S PROJECTED
HERS® INDEX = 72 ***
Projected Rating Based on Plans – Field Confirmation Required

How does this floor plan rate?
Take a look: **100** = Standard new home* **130** = Typical resale home**
The lower the number, the better! Refer to the RESNET® HERS index brochure or go to www.RESNET.us for details.

What's a HERS® Index? HERS stands for Home Energy Rating System, a system created by RESNET® to measure home energy efficiency.[^]
A Projected HERS index or rating is a computer simulation performed prior to construction by a third-party HERS rater using RESNET-accredited rating software, rated feature and specification data derived from home plans, features and specifications, and other data selected or assumed by the rater. The projected HERS index is approximate and is subject to change without notice. Actual results will vary.

*This information is presented for education purposes only. The HERS index for a confirmed rating will be determined by a third-party HERS rater based on data gathered from on-site observations and, if required, testing of rated features for a home as featured, optioned, located, oriented and/or built.
+Standard new home is based on the RESNET® Reference Home definition with a HERS® index of 100 (based on the 2006 International Energy Conservation Code).
++Typical resale home is based on the U.S. Department of Energy definition with a HERS® index of 130.

[^]RESNET® has developed the HERS® index to indicate the comparative efficiencies of homes. It is no guarantee that energy efficiencies will be achieved.