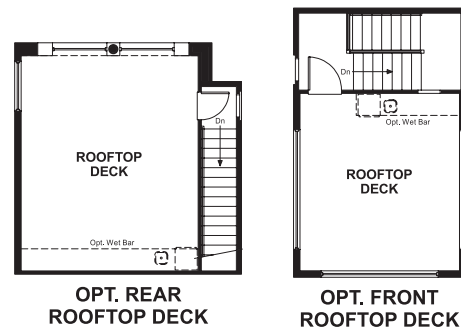


The Summit at San Elijo
MELBOURNE

Approx. square feet: 4,550
Stories: 2
Bedrooms: 4 - 5

Garage: 2- to 3-car
Plan Number: S694

Floor Plan
Rooftop Terrace



The Summit at San Elijo
MELBOURNE

Approx. square feet: 4,550
Stories: 2
Bedrooms: 4 - 5
Garage: 2- to 3-car
Plan Number: S694

Single-car side-entry and 2-car front-entry garages flank the inviting courtyard of the Melbourne plan. Inside, you'll find an airy great room and an open dining room that flows into a gourmet kitchen with an island, separate prep kitchen and optional professional features. Other main-floor highlights include a club room, a convenient bedroom that can be optioned as a guest suite, suite living space and two covered patios. Upstairs, discover a relaxing master suite with a covered deck, and a bonus room. Options include a tech center, wine room and outdoor fireplace.



Elevation A

Available elevations:



Elevation A



Elevation C



Elevation D

COMMUNITY LOCATION
558 Ledge Street
San Marcos, CA 92078
760-653-7010

HOME GALLERY
5171 California Avenue
Irvine, CA 92617
800-852-9714



COMMUNITY LOCATION
558 Ledge Street
San Marcos, CA 92078
760-653-7010

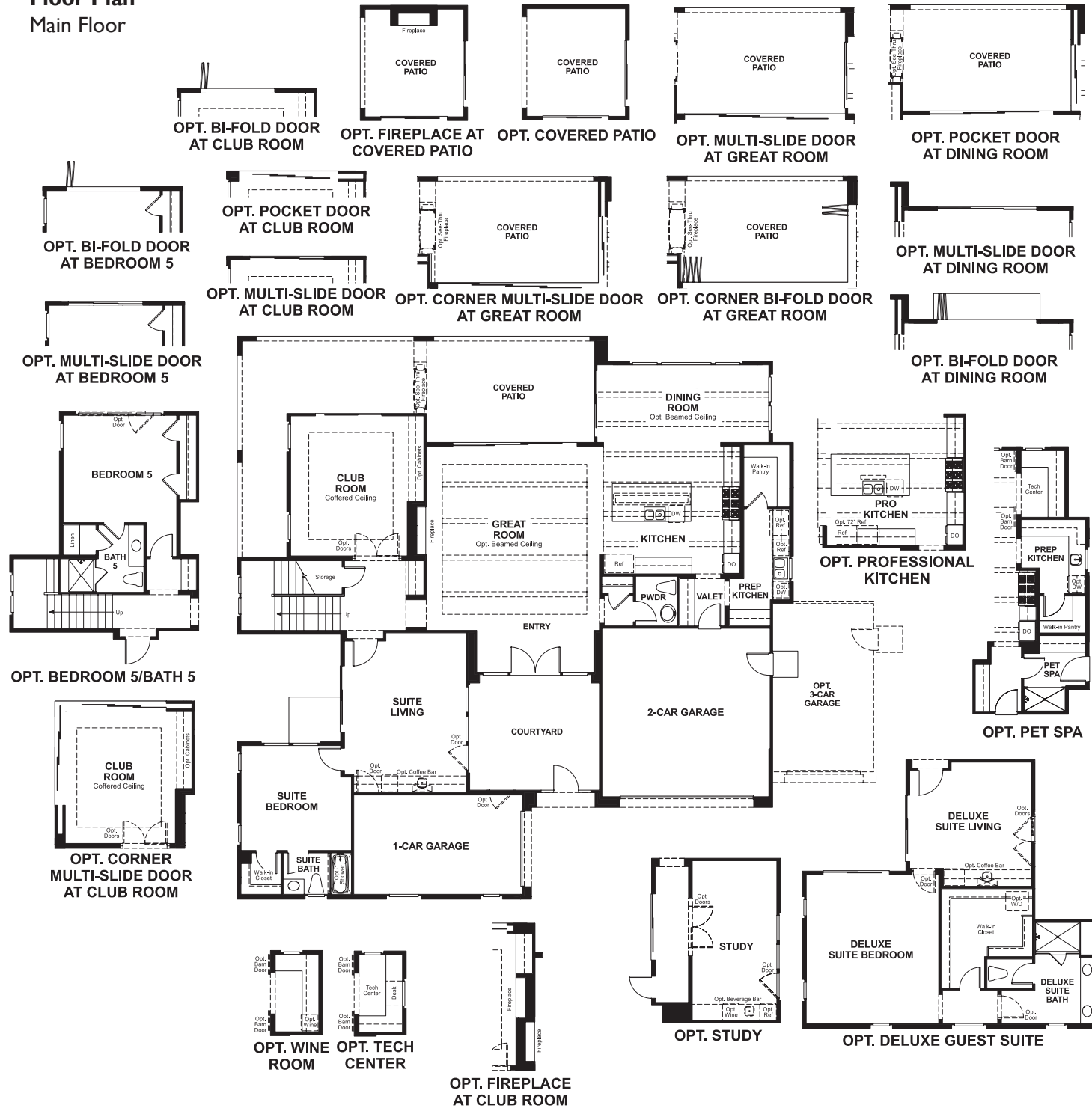
HOME GALLERY
5171 California Avenue
Irvine, CA 92617
800-852-9714

The Summit at San Elijo
MELBOURNE

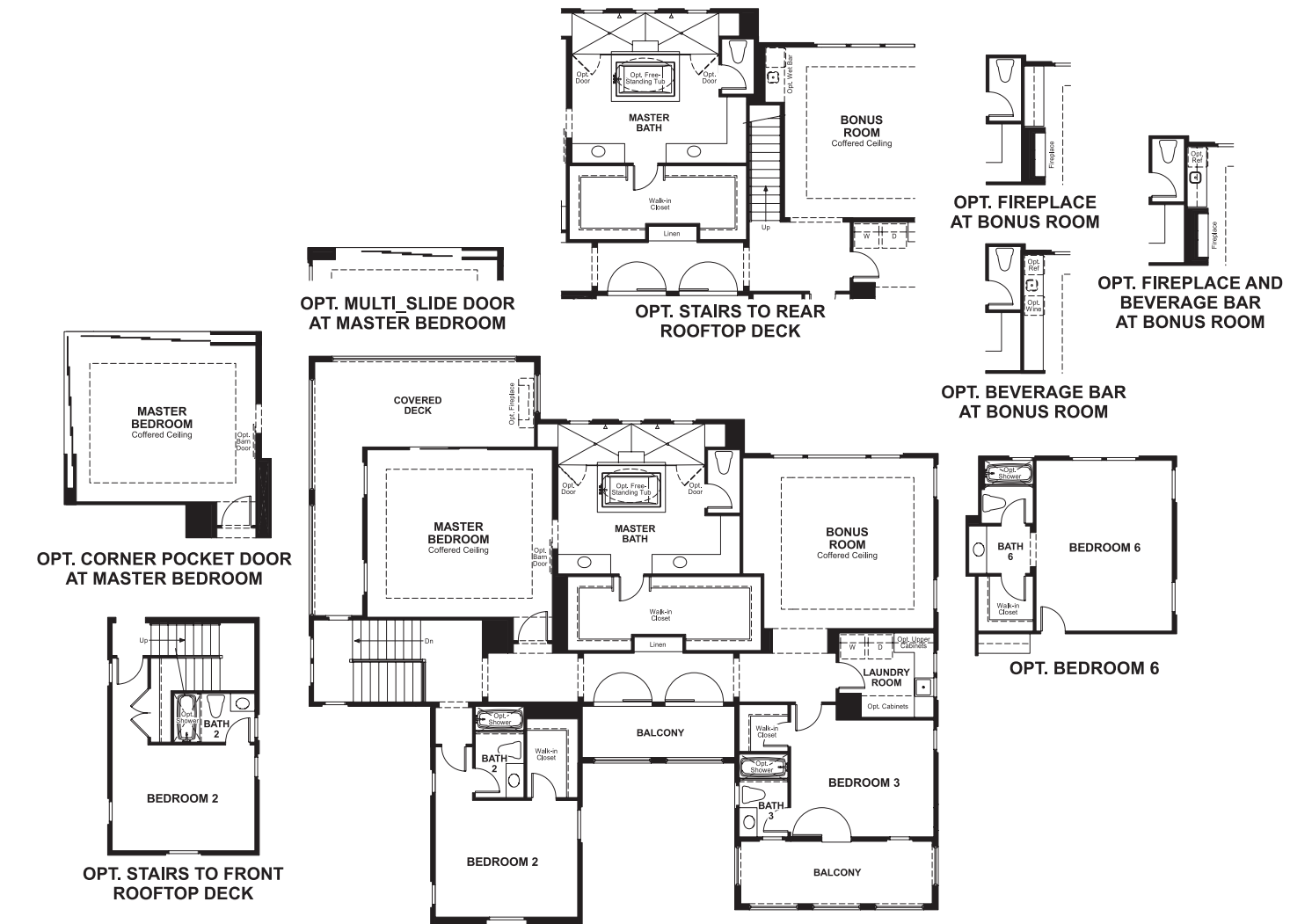
Approx. square feet: 4,550
Stories: 2
Bedrooms: 4 - 5

Garage: 2- to 3-car
Plan Number: S694

Floor Plan
Main Floor



Floor Plan
Second Floor



**THIS PLAN'S PROJECTED
HERS® INDEX = 70***
Projected Rating Based on Plans – Field Confirmation Required

How does this floor plan rate?
Take a look: 100 = Standard new home* 130 = Typical resale home**
The lower the number, the better! Refer to the RESNET® HERS index brochure or go to www.RESNET.us for details.

What's a HERS® Index? HERS stands for Home Energy Rating System, a system created by RESNET® to measure home energy efficiency.[^]
A Projected HERS index or rating is a computer simulation performed prior to construction by a third-party HERS rater using RESNET-accredited rating software, rated feature and specification data derived from home plans, features and specifications, and other data selected or assumed by the rater. The projected HERS index is approximate and is subject to change without notice. Actual results will vary.

*This information is presented for education purposes only. The HERS index for a confirmed rating will be determined by a third-party HERS rater based on data gathered from on-site observations and, if required, testing of rated features for a home as featured, optioned, located, oriented and/or built.
+Standard new home is based on the RESNET® Reference Home definition with a HERS® index of 100 (based on the 2006 International Energy Conservation Code).
**Typical resale home is based on the U.S. Department of Energy definition with a HERS® index of 130.

[^]RESNET® has developed the HERS® index to indicate the comparative efficiencies of homes. It is no guarantee that energy efficiencies will be achieved.