

Arlington Point
PAISLEY

Approx. square feet: 3,300
Stories: 2
Bedrooms: 3 - 6

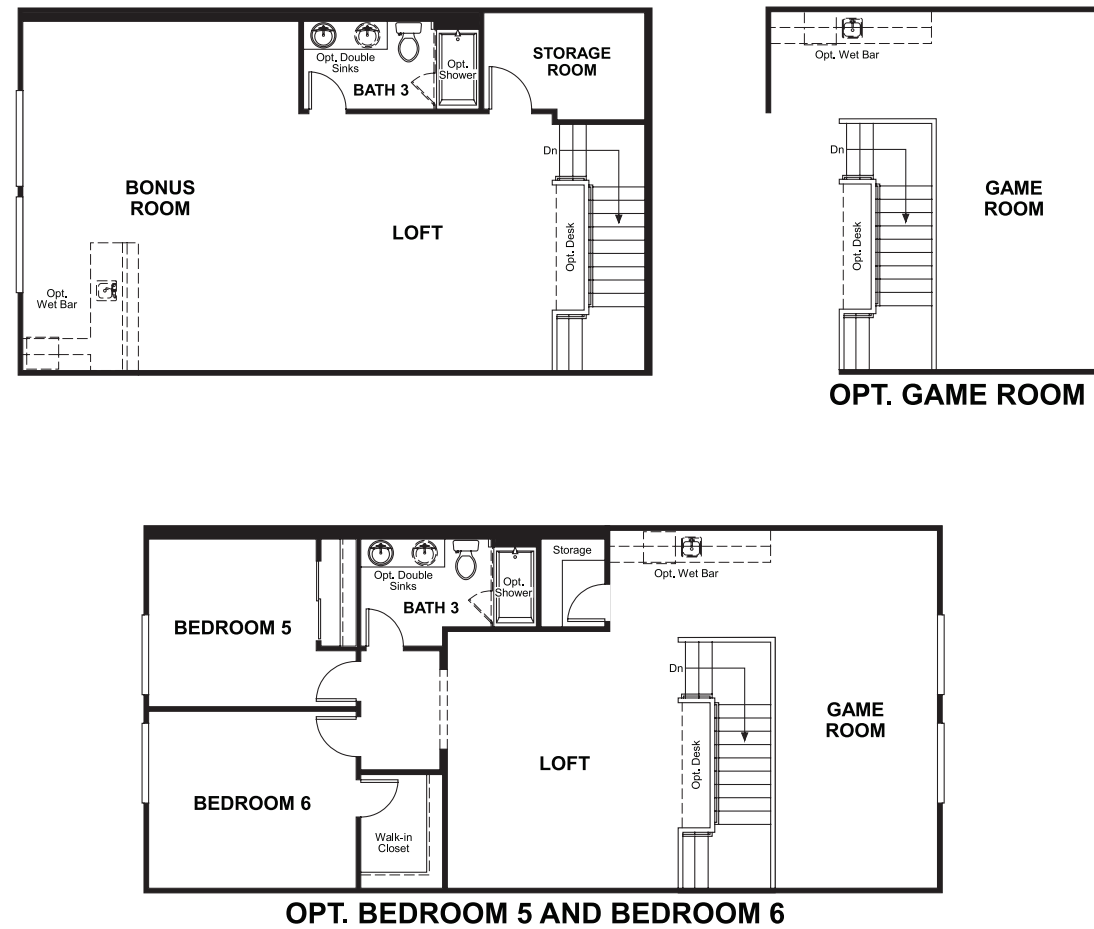
Garage: 3-car tandem
Plan Number: L35P

Arlington Point
PAISLEY

Approx. square feet: 3,300
Stories: 2
Bedrooms: 3 - 6
Garage: 3-car tandem
Plan Number: L35P

The Paisley offers the convenience of a ranch-style plan, plus a bonus loft upstairs for added entertaining space. Highlights include a quiet study, an inviting great room with optional fireplace and a spacious gourmet kitchen with breakfast nook and adjacent covered patio. The relaxing master suite includes an expansive walk-in closet and deluxe master bath, and is separated from two additional bedrooms for privacy. Personalization options include a dining room in lieu of the study.

Floor Plan
Second Floor



Elevation A

Available elevations:



Elevation A



Elevation B



Elevation C

COMMUNITY LOCATION
Westwind Road and Oleta Avenue
Las Vegas, NV 89139
702-638-4400

HOME GALLERY
7770 South Dean Martin Drive, Suite 308
Las Vegas, NV 89139
702-617-8400

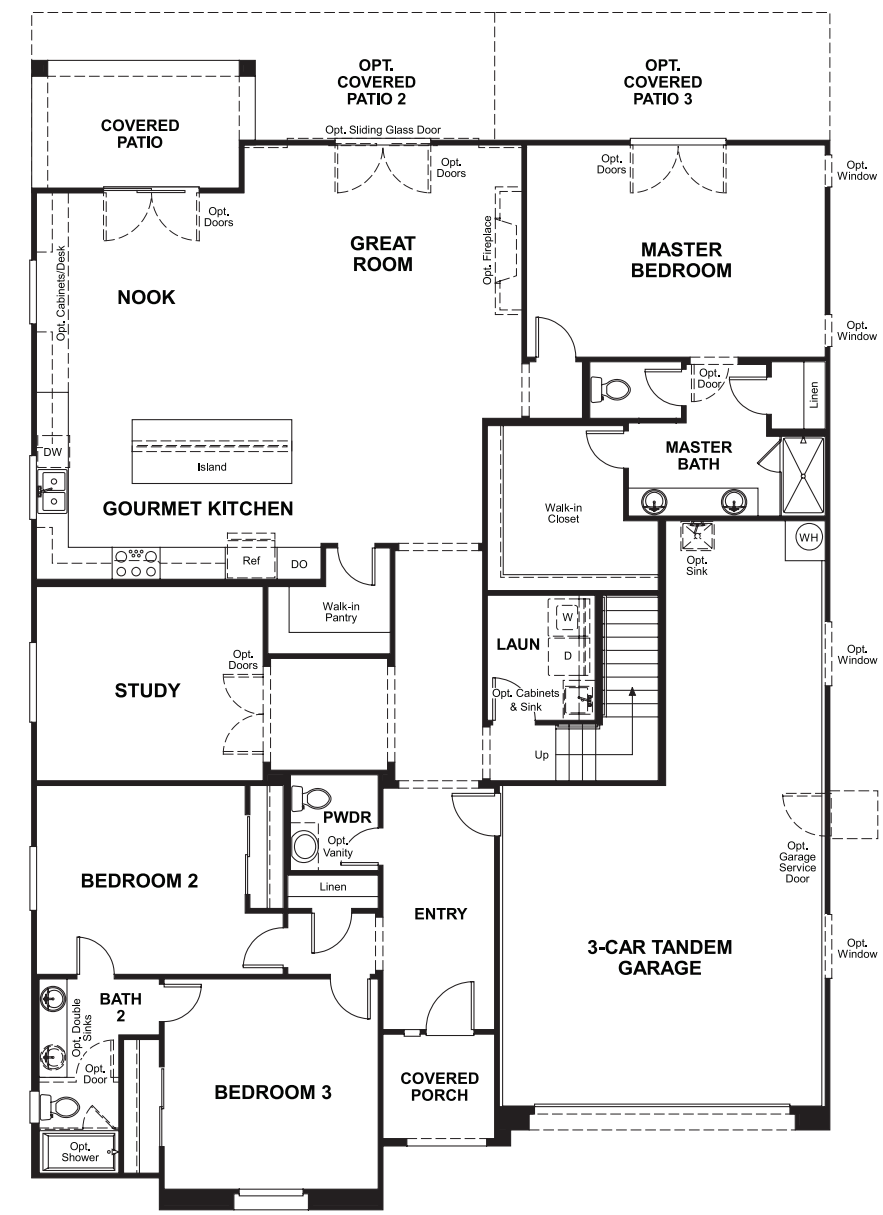


COMMUNITY LOCATION
Westwind Road and Oleta Avenue
Las Vegas, NV 89139
702-638-4400

HOME GALLERY
7770 South Dean Martin Drive, Suite 308
Las Vegas, NV 89139
702-617-8400



Floor Plan
Main Floor



Floor Plan
Main Floor Options

