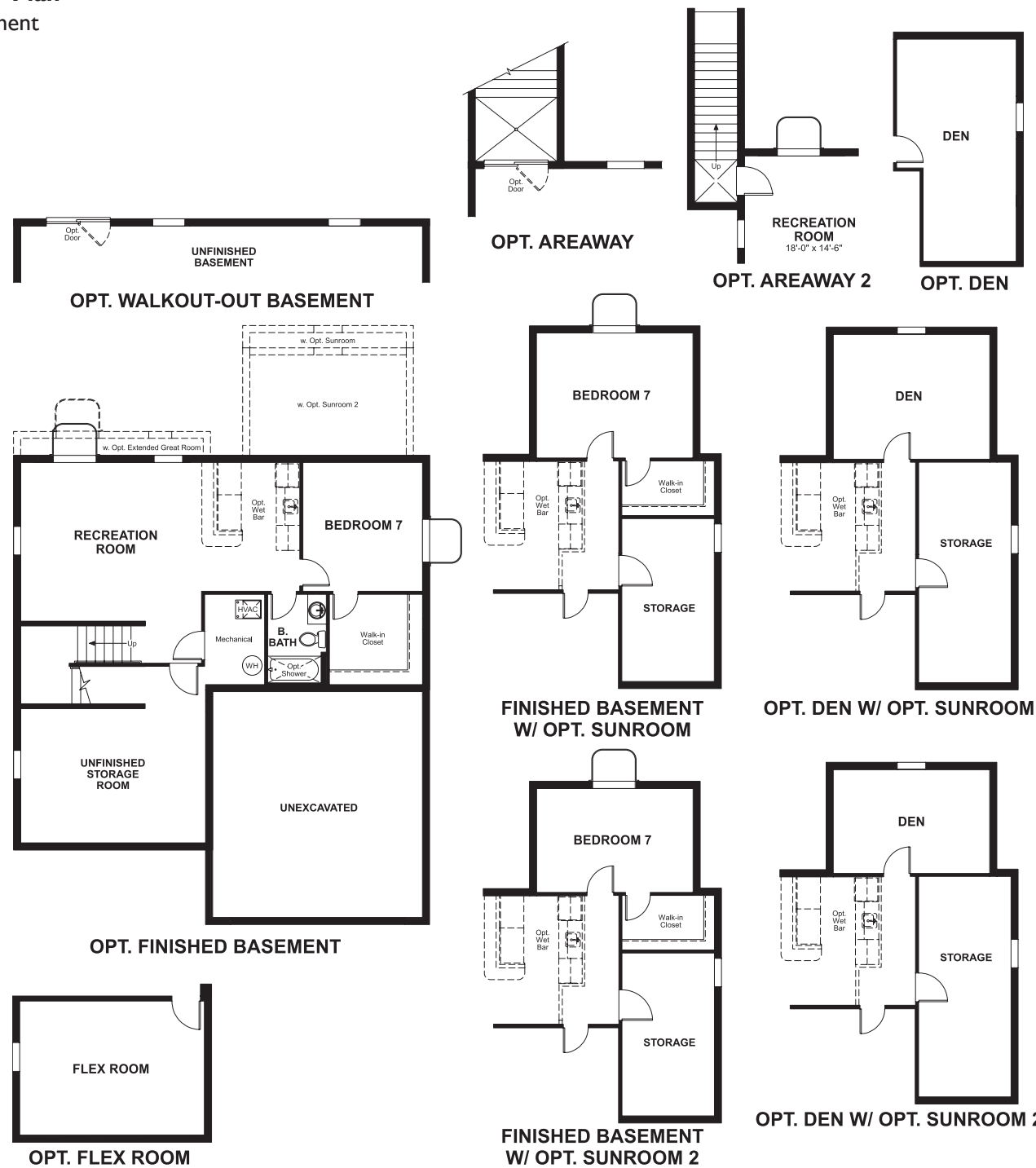


HEMINGWAY II

Approx. square feet: 3,050
Stories: 3
Bedrooms: 4 - 7

Garage: 2- to 3-car
Plan Number: M350

Floor Plan
Basement



Elevation H

Available elevations:



Elevation A



Elevation B



Elevation C



Elevation D



Elevation E



Elevation F



Elevation G



Elevation H



Elevation J



Elevation K



Elevation L

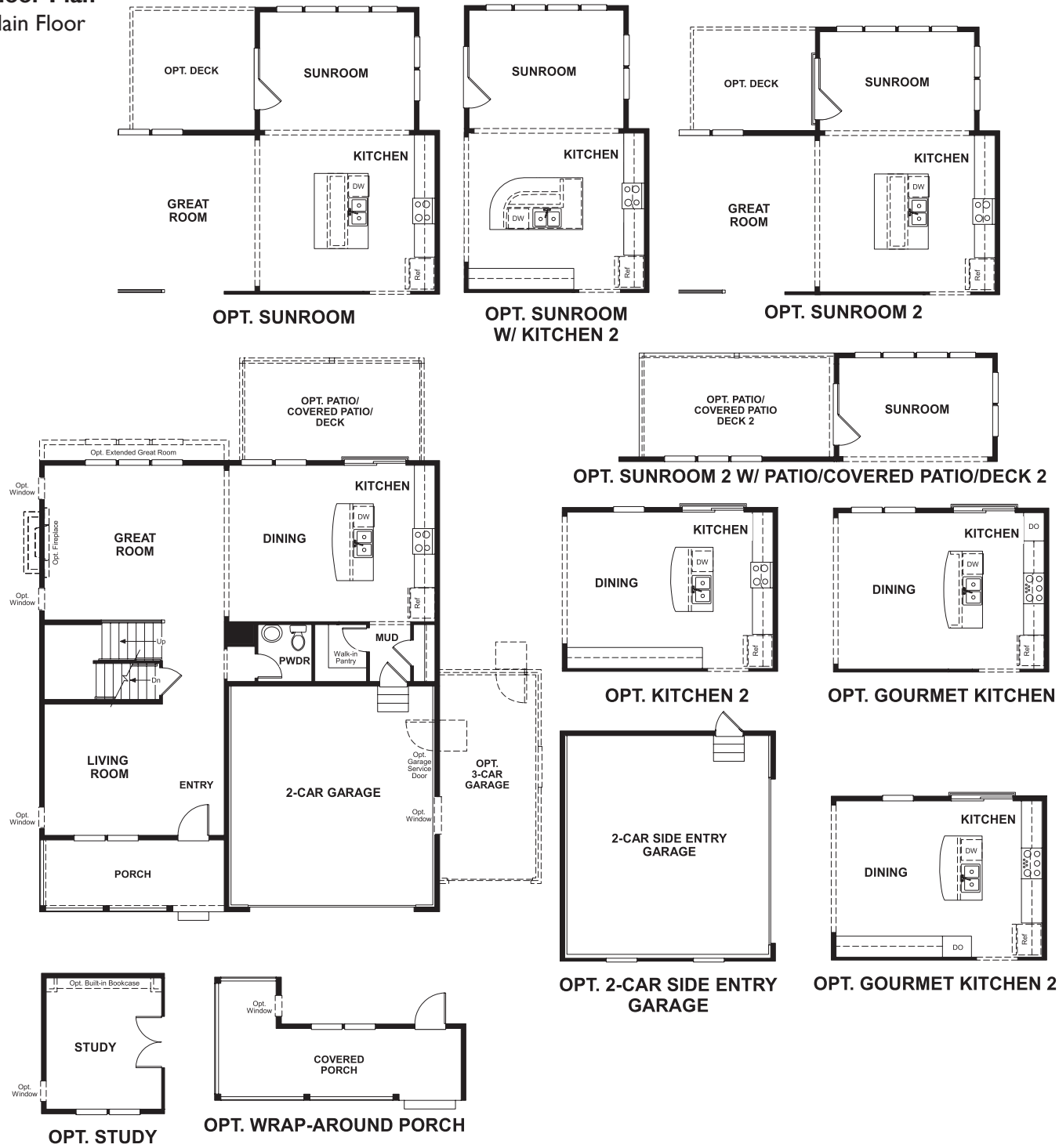
Approx. square feet: 3,050
Stories: 3
Bedrooms: 4 - 7
Garage: 2- to 3-car
Plan Number: M350

This floor plan offers the same popular layout of our Hemingway plan, plus a spacious third-floor loft for entertaining! On the main floor, you'll find a convenient powder room, a formal living room, a great room with an optional fireplace and a well-appointed kitchen with a center island, walk-in pantry and adjacent dining room. Upstairs, discover a laundry, a roomy loft that can be optioned as an extra bedroom, and an elegant master suite with a walk-in closet and optional deluxe bath. Additional options include a gourmet kitchen, sunroom and finished basement.

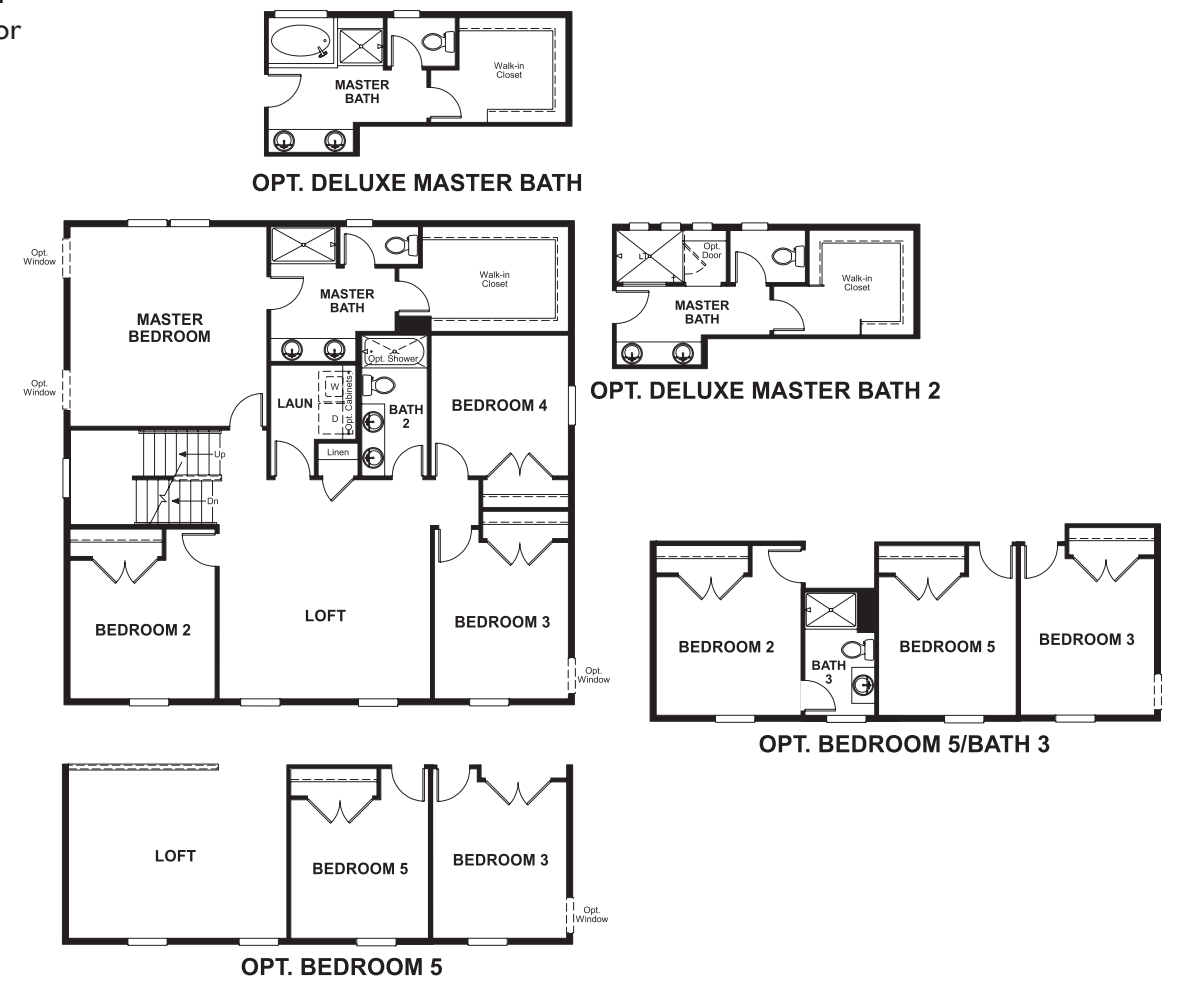
HEMINGWAY II

Approx. square feet: 3,050
Stories: 3
Bedrooms: 4 - 7
Garage: 2- to 3-car
Plan Number: M350

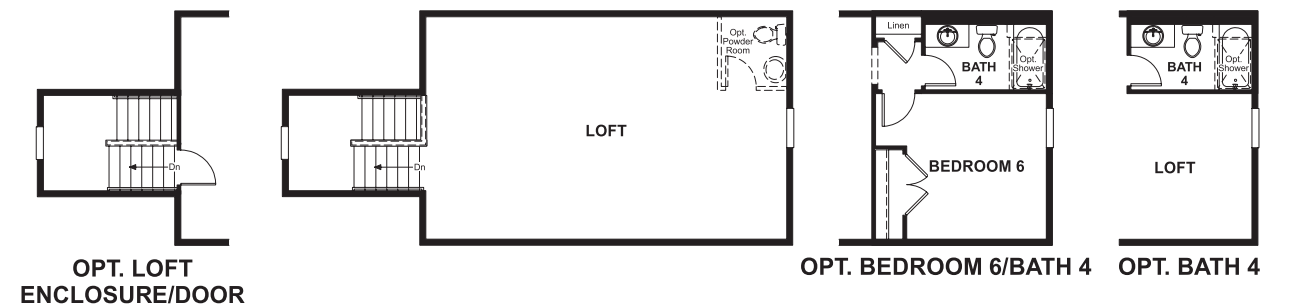
Floor Plan Main Floor



Floor Plan Second Floor



Third Floor



**THIS PLAN'S PROJECTED
HERS® INDEX = 57***
Projected Rating Based on Plans – Field Confirmation Required

How does this floor plan rate?
Take a look: **100** = Standard new home* **130** = Typical resale home**
The lower the number, the better! Refer to the RESNET® HERS index brochure or go to www.RESNET.us for details.

What's a HERS® Index? HERS stands for Home Energy Rating System, a system created by RESNET® to measure home energy efficiency.[^]
A Projected HERS index or rating is a computer simulation performed prior to construction by a third-party HERS rater using RESNET-accredited rating software, rated feature and specification data derived from home plans, features and specifications, and other data selected or assumed by the rater. The projected HERS index is approximate and is subject to change without notice. Actual results will vary.

*This information is presented for education purposes only. The HERS index for a confirmed rating will be determined by a third-party HERS rater based on data gathered from on-site observations and, if required, testing of rated features for a home as featured, optioned, located, oriented and/or built.
+Standard new home is based on the RESNET® Reference Home definition with a HERS® index of 100 (based on the 2006 International Energy Conservation Code).
++Typical resale home is based on the U.S. Department of Energy definition with a HERS® index of 130.

[^]RESNET® has developed the HERS® index to indicate the comparative efficiencies of homes. It is no guarantee that energy efficiencies will be achieved.