

Auburn at Stonegate
SEABROOK



Elevation A

Available elevations:



Elevation A



Elevation B

Approx. square feet: 3,210
Stories: 2
Bedrooms: 4
Garage: 2-car

With exciting included features and numerous ways to personalize, the Seabrook is an inspired plan designed to fit your lifestyle. On one side of the great room, enjoy a kitchen flanked by a dining room and butler's pantry. A relaxing outdoor area—perfect for entertaining—can be found on the other side of the great room. Main-floor options include a pet spa or a wine room in lieu of the butler's pantry. Upstairs, you'll find an inviting master suite with a lavish bath. Three additional bedrooms are located throughout, including one on the main floor with its own private entrance.



Elevation C

 **Villages of Irvine**[®]
Masterfully Planned by the Irvine Company

"Masterfully Planned by the Irvine Company" means that the Irvine Company created the master land plan for all Irvine Company communities. The "master land plan" includes the overall entitlement and design of each community but does not include the design, construction and sale of homes. The design, construction and sale of homes is the sole responsibility of the community builders. The Irvine company is not designing, constructing or offering homes for sale in any community.

COMMUNITY LOCATION
53 Fenway
Irvine, CA 92595
800-852-9714

HOME GALLERY
5171 California Avenue
Irvine, CA 92617
800-852-9714



COMMUNITY LOCATION
53 Fenway
Irvine, CA 92595
800-852-9714

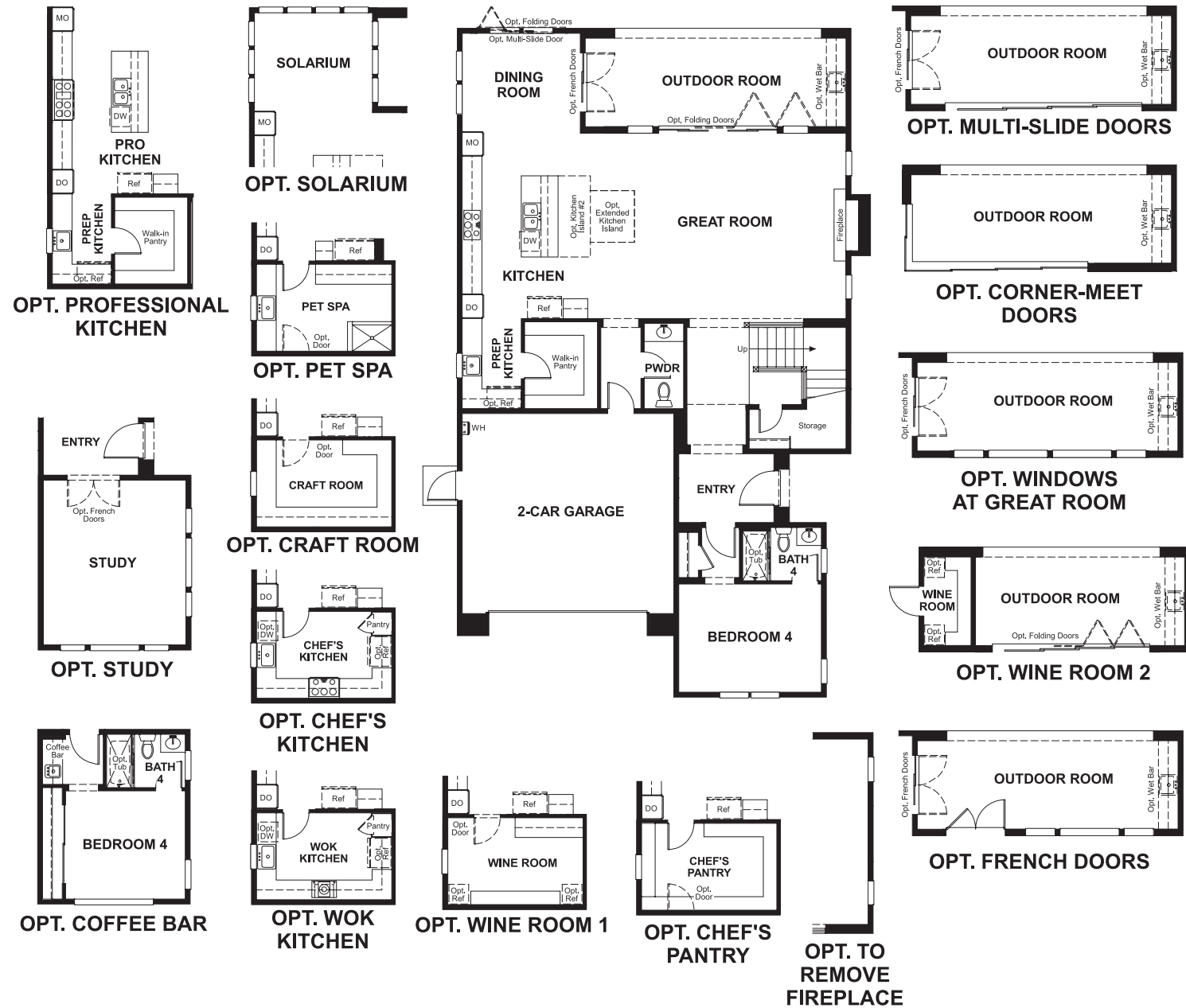
HOME GALLERY
5171 California Avenue
Irvine, CA 92617
800-852-9714



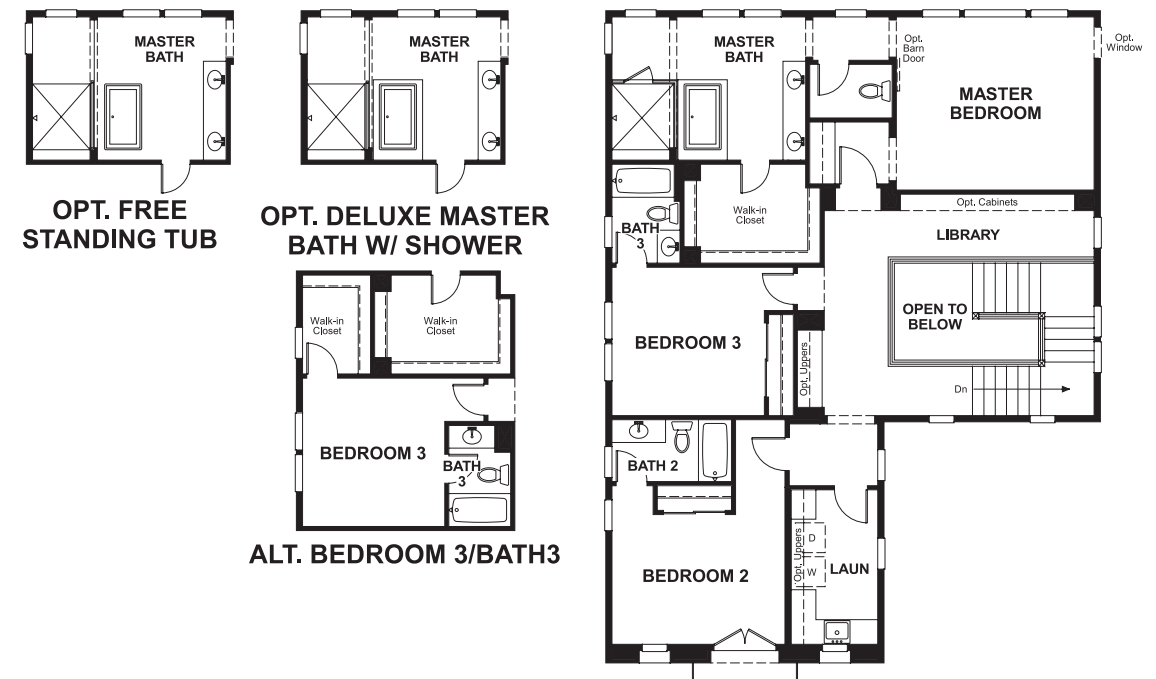
Auburn at Stonegate
SEABROOK

Approx. square feet: 3,210 **Bedrooms:** 4
Stories: 2 **Garage:** 2-car

Floor plan
Main Floor



Floor plan
Second Floor



**THIS PLAN'S PROJECTED
HERS® INDEX = 68***
Projected Rating Based on Plans – Field Confirmation Required

How does this floor plan rate?
Take a look: **100** = Standard new home* **130** = Typical resale home**
The lower the number, the better! Refer to the RESNET® HERS index brochure or go to www.RESNET.us for details.

What's a HERS® Index? HERS stands for Home Energy Rating System, a system created by RESNET® to measure home energy efficiency.[^]
A Projected HERS index or rating is a computer simulation performed prior to construction by a third-party HERS rater using RESNET-accredited rating software, rated feature and specification data derived from home plans, features and specifications, and other data selected or assumed by the rater. The projected HERS index is approximate and is subject to change without notice. Actual results will vary.

*This information is presented for education purposes only. The HERS index for a confirmed rating will be determined by a third-party HERS rater based on data gathered from on-site observations and, if required, testing of rated features for a home as featured, optioned, located, oriented and/or built.
+Standard new home is based on the RESNET® Reference Home definition with a HERS® index of 100 (based on the 2006 International Energy Conservation Code).
**Typical resale home is based on the U.S. Department of Energy definition with a HERS® index of 130.

[^]RESNET® has developed the HERS® index to indicate the comparative efficiencies of homes. It is no guarantee that energy efficiencies will be achieved.