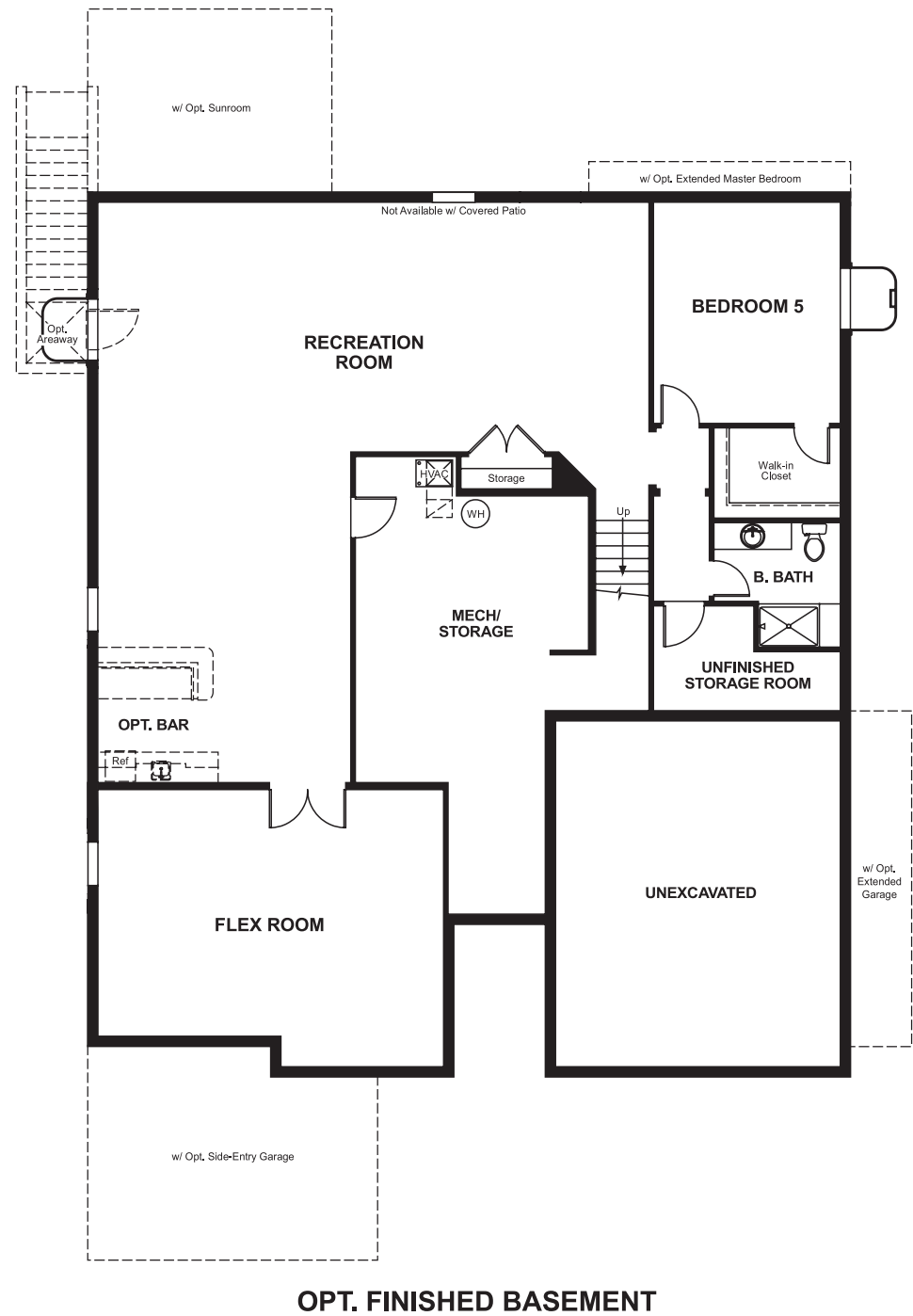


Old Dominion Greens
DANIEL

Approx. square feet: 2,350
Stories: 1
Bedrooms: 3 - 5

Garage: 2- to 3-car
Plan Number: M237

Floor Plan
Basement



COMMUNITY LOCATION
218 Bridgewater Drive
Stephens City, VA 22655
703-348-0025

HOME GALLERY
11393 Government Center Parkway
Fairfax, VA 22030
888-891-7349

Old Dominion Greens
DANIEL



Elevation F

Available elevations:



Elevation A



Elevation B



Elevation C



Elevation D



Elevation E



Elevation F

Approx. square feet: 2,350
Stories: 1
Bedrooms: 3 - 5
Garage: 2- to 3-car
Plan Number: M237

The ranch-style Daniel plan boasts a quiet study, an expansive family room and a well-appointed kitchen with a walk-in pantry, center island and optional gourmet features. The relaxing master suite offers an immense walk-in closet and optional deluxe bath, and is separated from two additional bedrooms for privacy. Personalize this plan with an extra bedroom, a finished basement, a 3-car garage and more!

COMMUNITY LOCATION
218 Bridgewater Drive
Stephens City, VA 22655
703-348-0025

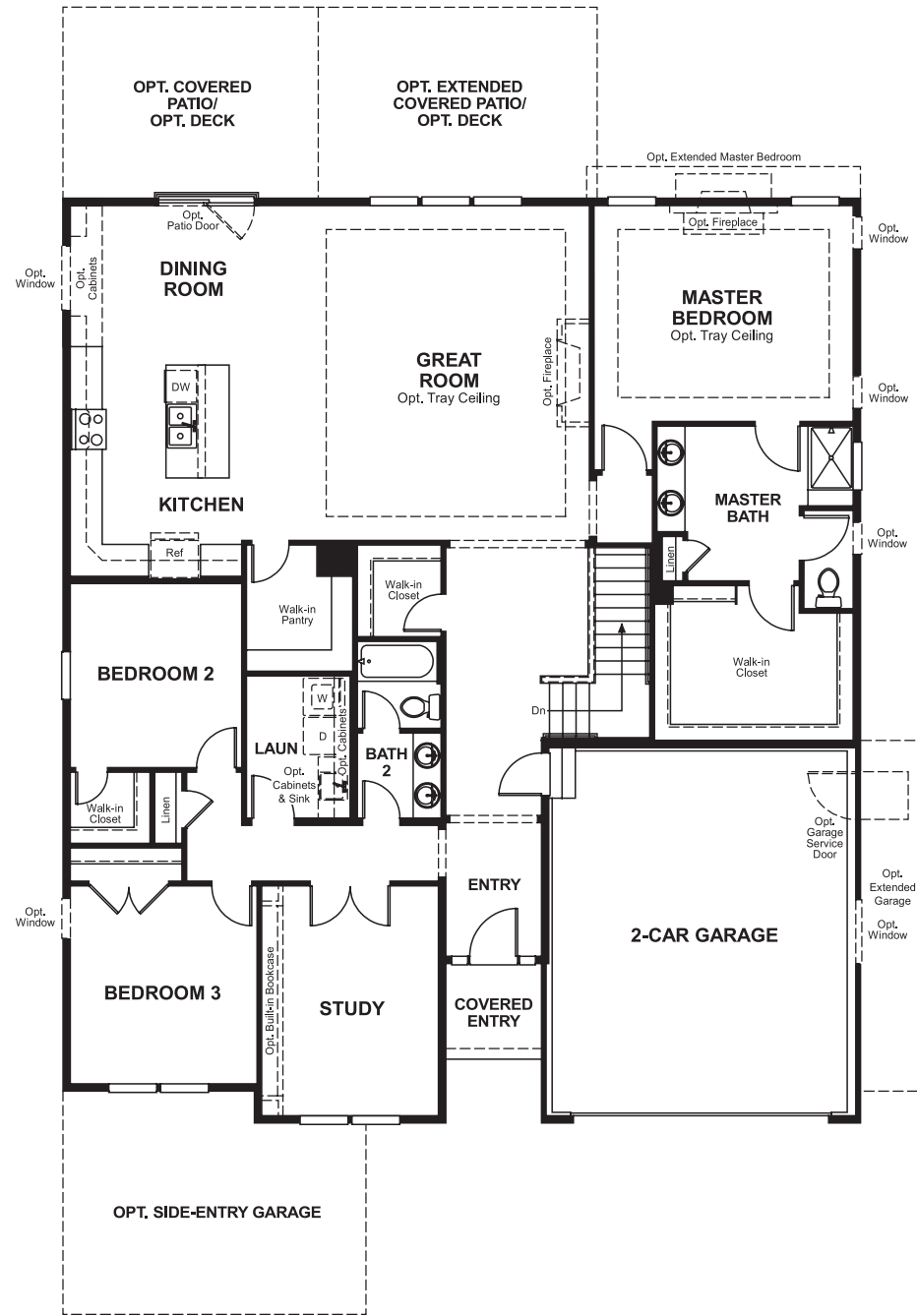
HOME GALLERY
11393 Government Center Parkway
Fairfax, VA 22030
888-891-7349

Old Dominion Greens
DANIEL

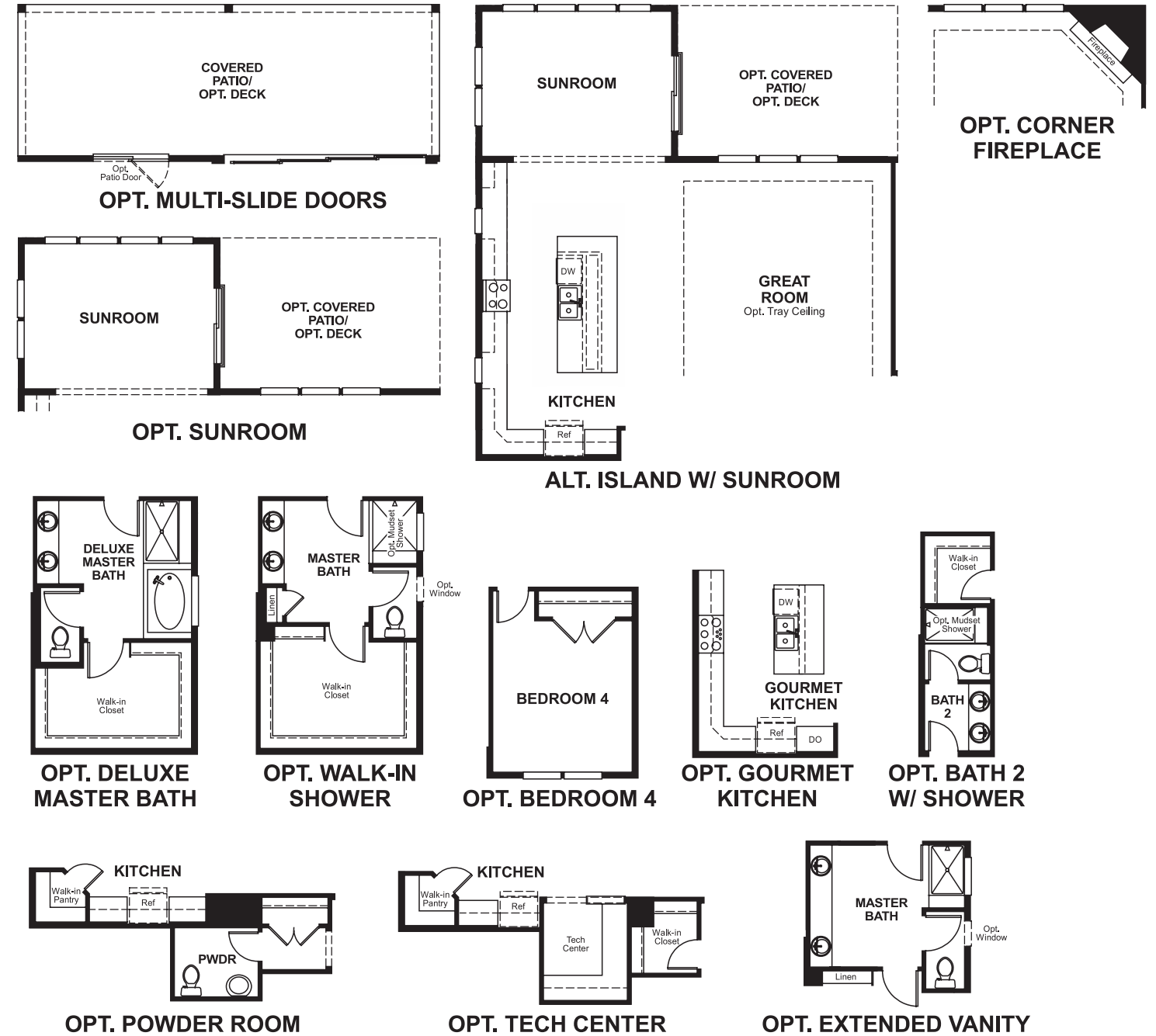
Approx. square feet: 2,350
Stories: 1
Bedrooms: 3 - 5

Garage: 2- to 3-car
Plan Number: M237

Floor Plan
Main Floor



Floor Plan
Main Floor Options



**THIS PLAN'S PROJECTED
HERS® INDEX = 67***
Projected Rating Based on Plans – Field Confirmation Required

How does this floor plan rate?
Take a look: 100 = Standard new home* 130 = Typical resale home**
The lower the number, the better! Refer to the RESNET® HERS index brochure or go to www.RESNET.us for details.

What's a HERS® Index? HERS stands for Home Energy Rating System, a system created by RESNET® to measure home energy efficiency.[^]
A Projected HERS index or rating is a computer simulation performed prior to construction by a third-party HERS rater using RESNET-accredited rating software, rated feature and specification data derived from home plans, features and specifications, and other data selected or assumed by the rater. The projected HERS index is approximate and is subject to change without notice. Actual results will vary.

*This information is presented for education purposes only. The HERS index for a confirmed rating will be determined by a third-party HERS rater based on data gathered from on-site observations and, if required, testing of rated features for a home as featured, optioned, located, oriented and/or built.
+Standard new home is based on the RESNET® Reference Home definition with a HERS® index of 100 (based on the 2006 International Energy Conservation Code).
**Typical resale home is based on the U.S. Department of Energy definition with a HERS® index of 130.

[^]RESNET® has developed the HERS® index to indicate the comparative efficiencies of homes. It is no guarantee that energy efficiencies will be achieved.