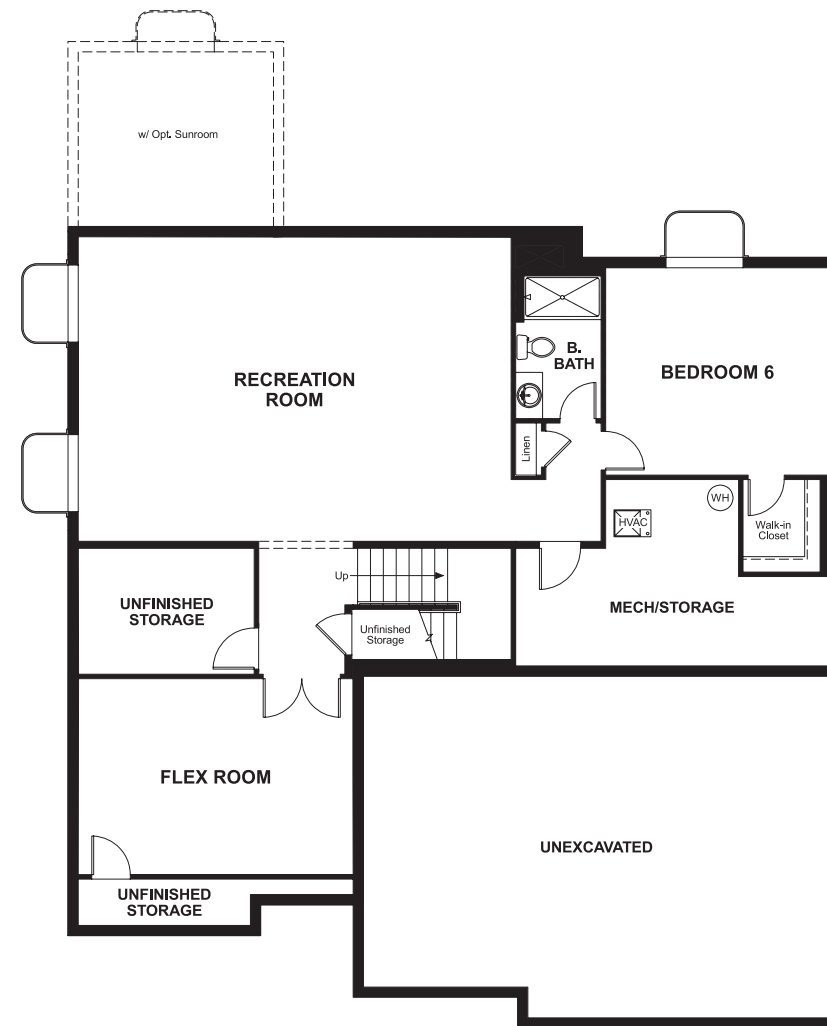


BASEMENT



OPT. FINISHED BASEMENT 4



ELEVATION F

ABOUT THE DILLON II

The Dillon II plan features an airy two-story entry and a spacious great room with an optional fireplace. You'll also appreciate a quiet study, formal dining room and corner kitchen with center island and breakfast nook. Upstairs, discover four generous bedrooms, including an elegant master suite with an immense walk-in closet and private bath with double sinks. Personalization options include a gourmet kitchen, sunroom, covered patio and finished basement.



ELEVATION A



ELEVATION B



ELEVATION E

COMMUNITY LOCATION:

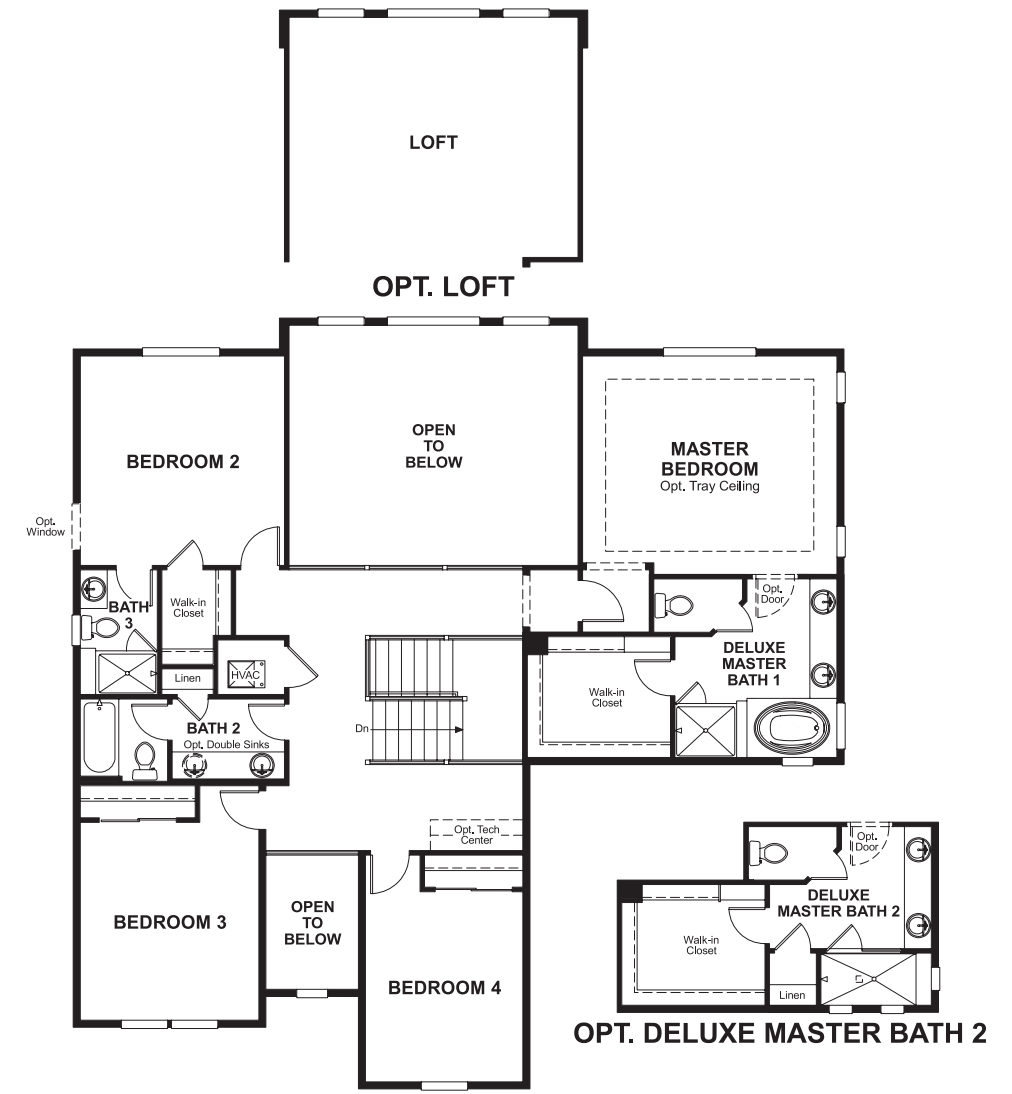
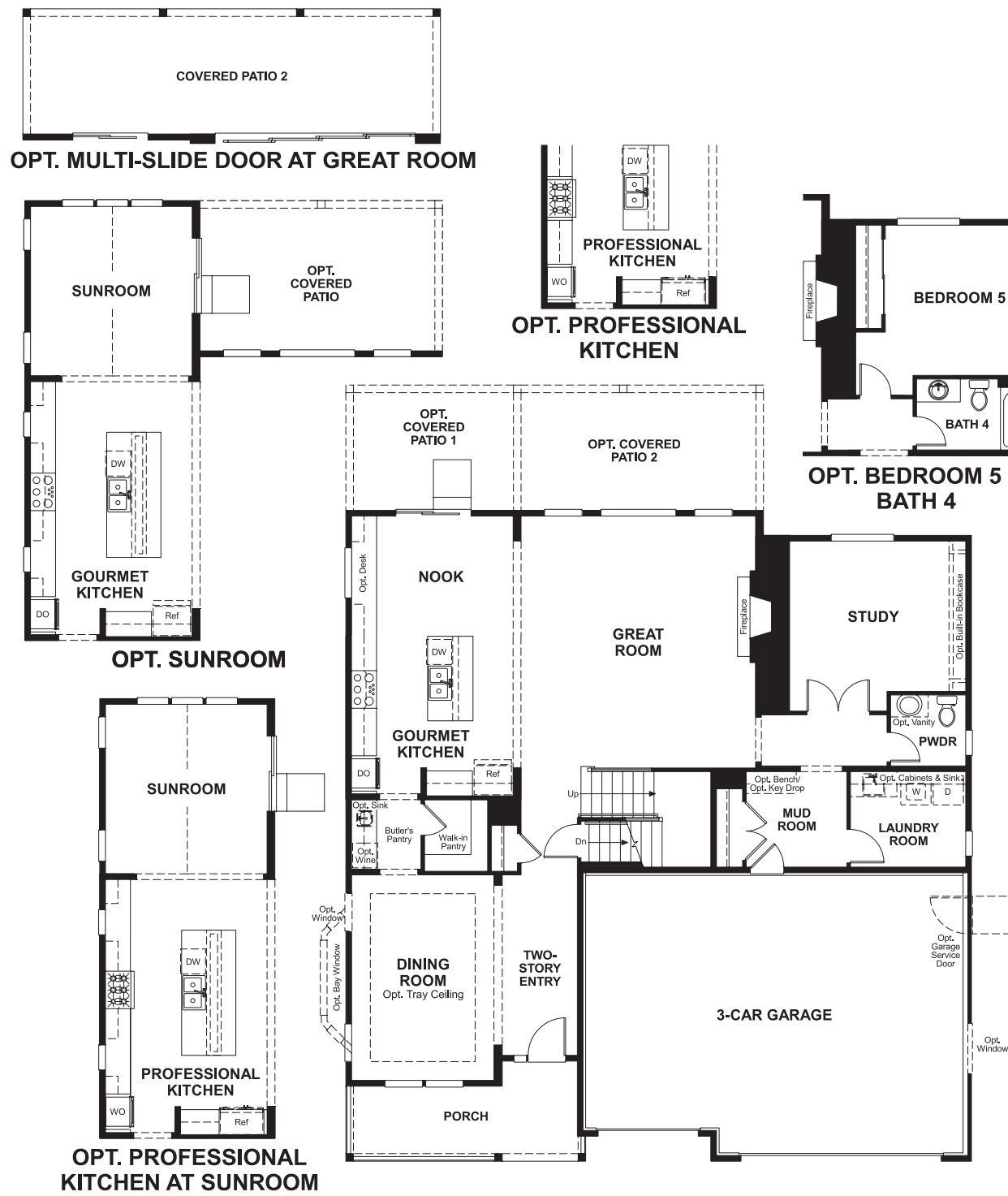
Blacktail at The Meadows | 1687 Gentle Rain Drive | Castle Rock, CO 80109 | 303.850.5750



Floor plans and renderings are conceptual drawings and may vary from actual plans and homes as built. Options and features may not be available on all homes and are subject to change without notice. Actual homes may vary from photos and/or drawings which show upgraded landscaping and may not represent the lowest-priced homes in the community. Features may include optional upgrades and may not be available on all homes. Square footage numbers are approximate and are subject to change without notice. Prices, specifications and availability subject to change without notice. ©2019 Richmond American Homes, Richmond American Homes of Colorado, Inc. 7/2/2019

MAIN FLOOR

SECOND FLOOR



Floor plans and renderings are conceptual drawings and may vary from actual plans and homes as built. Options and features may not be available on all homes and are subject to change without notice. Actual homes may vary from photos and/or drawings which show upgraded landscaping and may not represent the lowest-priced homes in the community. Features may include optional upgrades and may not be available on all homes. Square footage numbers are approximate and are subject to change without notice. Prices, specifications and availability subject to change without notice. ©2019 Richmond American Homes, Richmond American Homes of Colorado, Inc. 7/2/2019

Floor plans and renderings are conceptual drawings and may vary from actual plans and homes as built. Options and features may not be available on all homes and are subject to change without notice. Actual homes may vary from photos and/or drawings which show upgraded landscaping and may not represent the lowest-priced homes in the community. Features may include optional upgrades and may not be available on all homes. Square footage numbers are approximate and are subject to change without notice. Prices, specifications and availability subject to change without notice. ©2019 Richmond American Homes, Richmond American Homes of Colorado, Inc. 7/2/2019