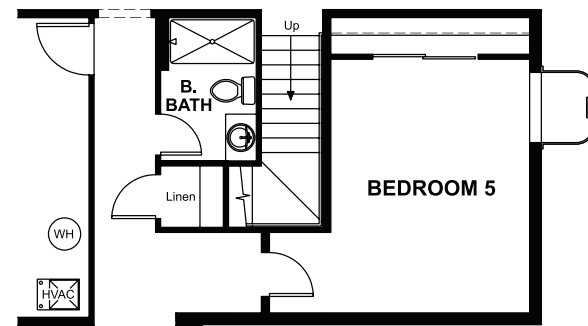
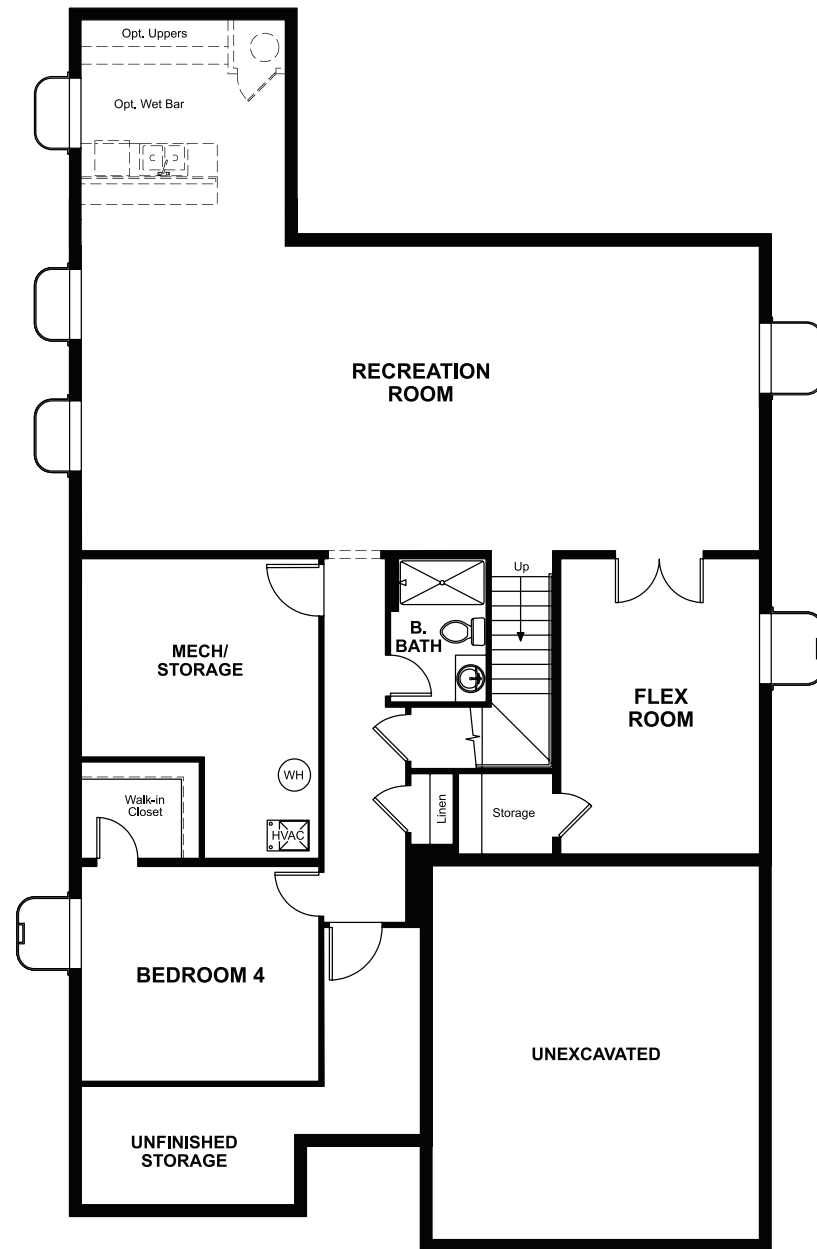


THE VERDE

Approx. 2,740 sq. ft. | 2 stories | 3-5 bedrooms | 2-car garage | Plan #D618

BASEMENT



OPT. BEDROOM 5



ELEVATION E

ABOUT THE VERDE

The Verde plan is ideal for entertaining, with a formal dining room, a spacious great room and a well-appointed kitchen with a center island, breakfast nook and included gourmet features. The main floor also boasts a private study and a convenient owner's suite with an optional deluxe bath. Upstairs, you'll find a full bath and two large bedrooms with walk-in closets.

OPTIONAL FINISHED BASEMENT

COMMUNITY LOCATION:

Ascent Village at Sterling Ranch | 9873 Eagle River Street | Littleton, CO 80125 | 303.850.5750

HOME GALLERY LOCATION:

Denver Metro Home Gallery™ | 8000 East Belleview Avenue, Suite C-12 | Greenwood Village, CO 80111 | 888.402.4663



ELEVATION A



ELEVATION B



ELEVATION C



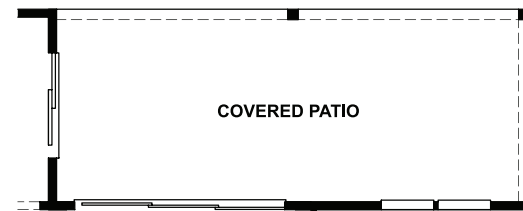
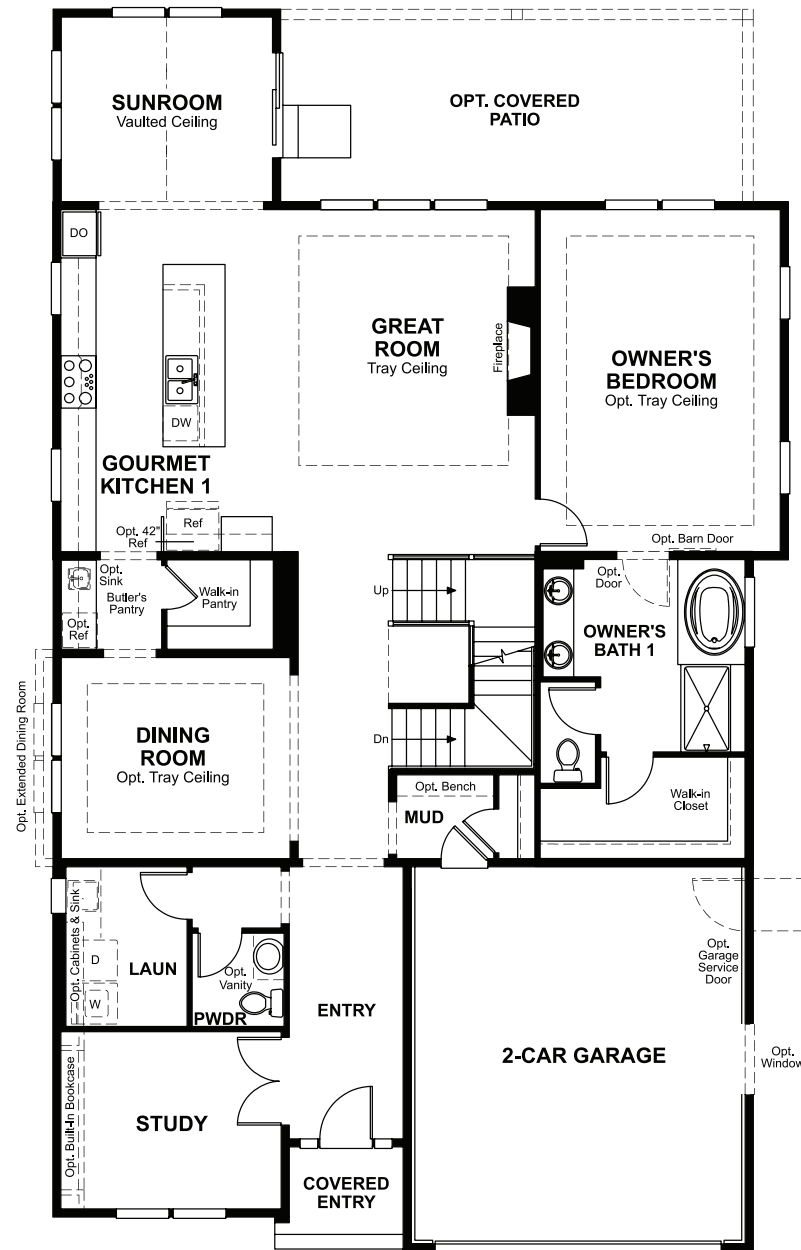
ELEVATION D



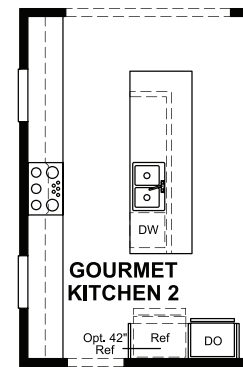
Floor plans and renderings are conceptual drawings and may vary from actual plans and homes as built. Options and features may not be available on all homes and are subject to change without notice. Actual homes may vary from photos and/or drawings which show upgraded landscaping and may not represent the lowest-priced homes in the community. Features may include optional upgrades and may not be available on all homes. Square footage numbers are approximate and are subject to change without notice. Prices, specifications and availability subject to change without notice. ©2021 Richmond American Homes, Richmond American Homes of Colorado, Inc. 10/18/2021

MAIN FLOOR

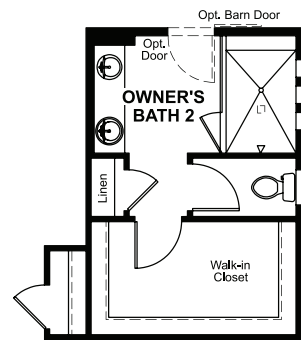
SECOND FLOOR



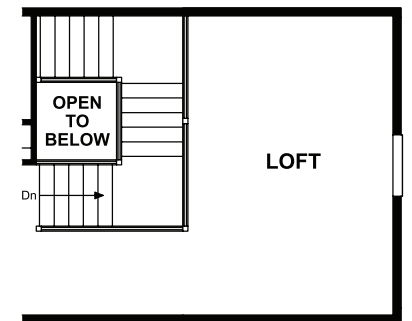
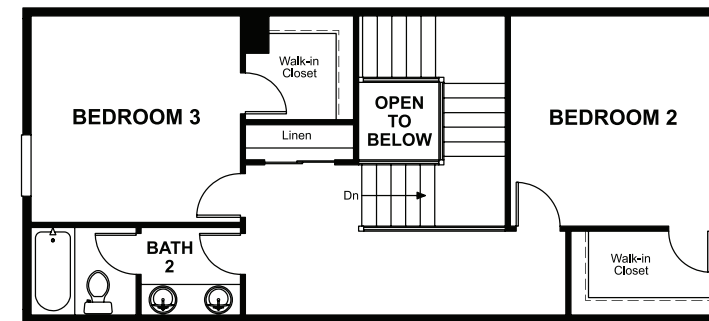
OPT. MULTI-SLIDE DOOR AT GREAT ROOM



OPT. GOURMET KITCHEN 2



OPT. DELUXE OWNER'S BATH 2



OPT. LOFT