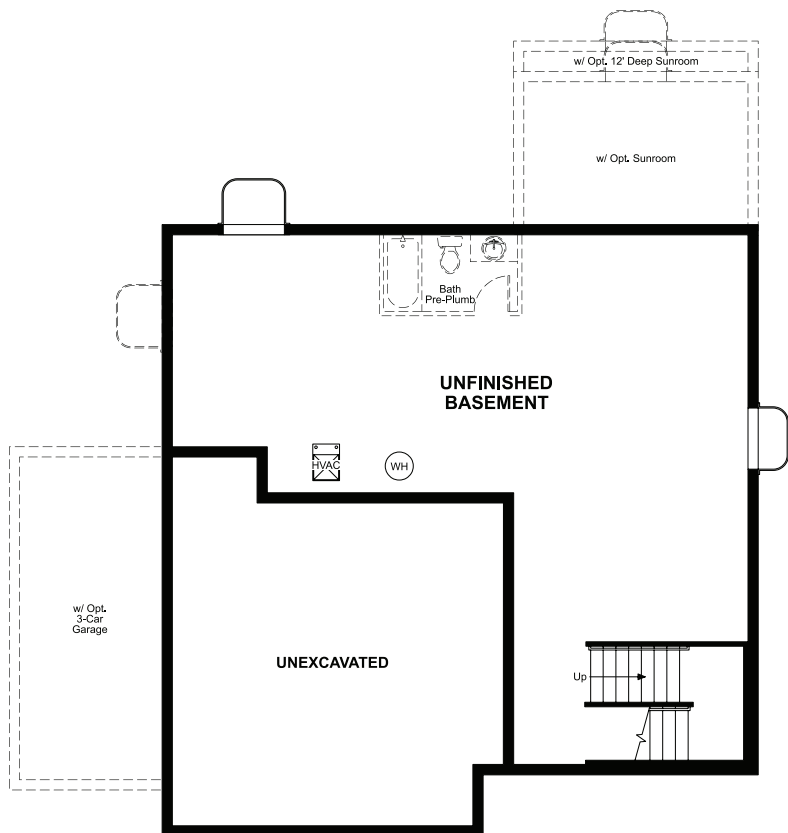


BASEMENT



ELEVATION C

ABOUT THE BEDFORD

The beautiful Bedford plan offers two stories of smartly designed living space. On the main floor, you'll find an open dining room, a great room and an inspired kitchen with a sizable center island. A convenient powder room is located off the mudroom. Upstairs, the home boasts a central laundry, two secondary bedrooms, a shared bath and an eye-catching primary suite showcasing an oversized walk-in closet and a private bath. The Bedford may be built with either a loft or an additional bedroom. Select homesites may include a gourmet kitchen, a cheerful sunroom, a deluxe primary bath and/or a covered patio.



ELEVATION A



ELEVATION B

COMMUNITY LOCATION:

Independence | 1077 East Witherspoon Drive | Elizabeth, CO 80107 | 303.255.6042



Floor plans and renderings are conceptual drawings and may vary from actual plans and homes as built. Options and features may not be available on all homes and are subject to change without notice. Actual homes may vary from photos and/or drawings which show upgraded landscaping and may not represent the lowest-priced homes in the community. Features may include optional upgrades and may not be available on all homes. Prices, specifications and availability are subject to change without notice. Square footage is approximate and subject to change without notice. ©2025 Richmond American Homes, Richmond American Homes of Colorado, Inc. 01/02/25

MAIN FLOOR

SECOND FLOOR

