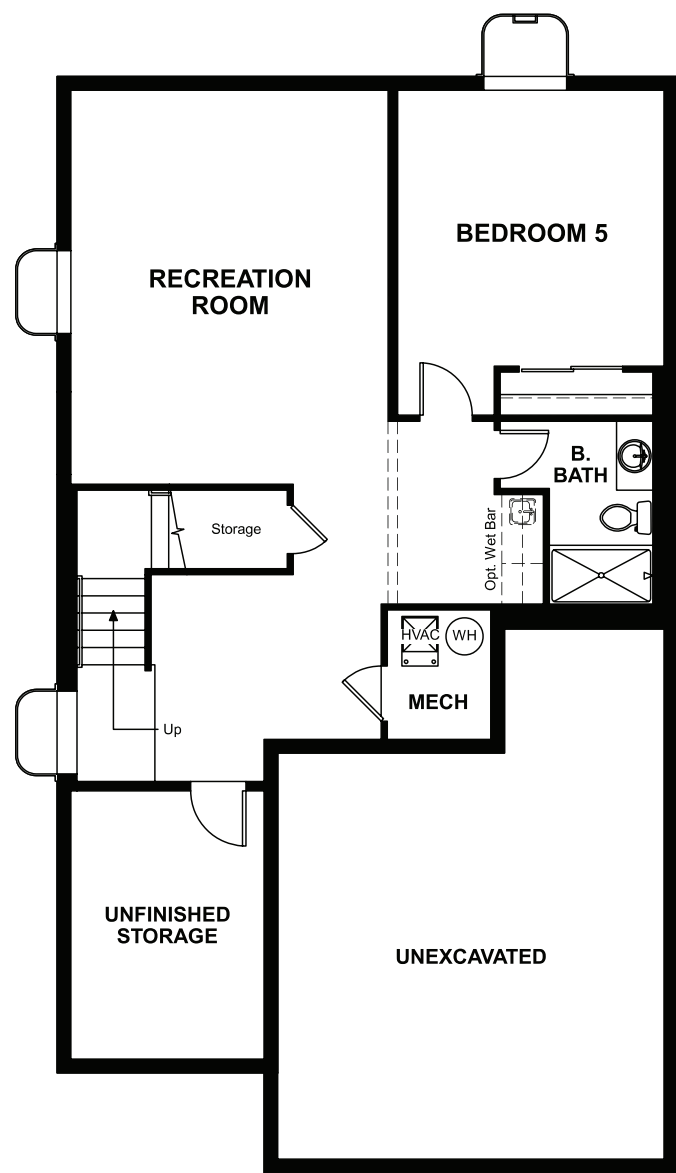


THE LEAH

Approx. 2,320 sq. ft. | 2 stories | 3-5 bedrooms | 2-car garage | Plan #D229

BASEMENT



OPT. FINISHED BASEMENT



ELEVATION D

ABOUT THE LEAH

The main floor of the lovely Leah plan boasts a formal dining room, a great room with an optional fireplace and a well-appointed kitchen featuring a center island and walk-in pantry. You'll also appreciate convenient mud and powder rooms. Upstairs, discover a laundry, a relaxing loft and three inviting bedrooms, including an elegant owner's suite with a private bath and expansive walk-in closet. Make this home your own with exciting options, such as a gourmet kitchen, deluxe owner's bath, fourth bedroom, covered patio and finished basement.

COMMUNITY LOCATION:

Red Maple Ridge Neighborhood at Copperleaf | 4313 South Liverpool Court | Aurora, CO 80015 | **303.850.5750**

HOME GALLERY LOCATION:

Denver Metro Home Gallery™ | 8000 East Belleview Avenue, Suite C-12 | Greenwood Village, CO 80111 | **888.402.4663**




ELEVATION A



ELEVATION B

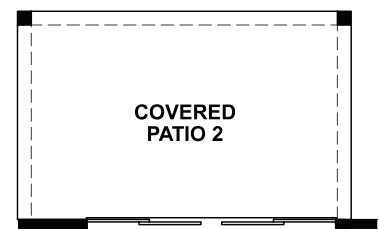
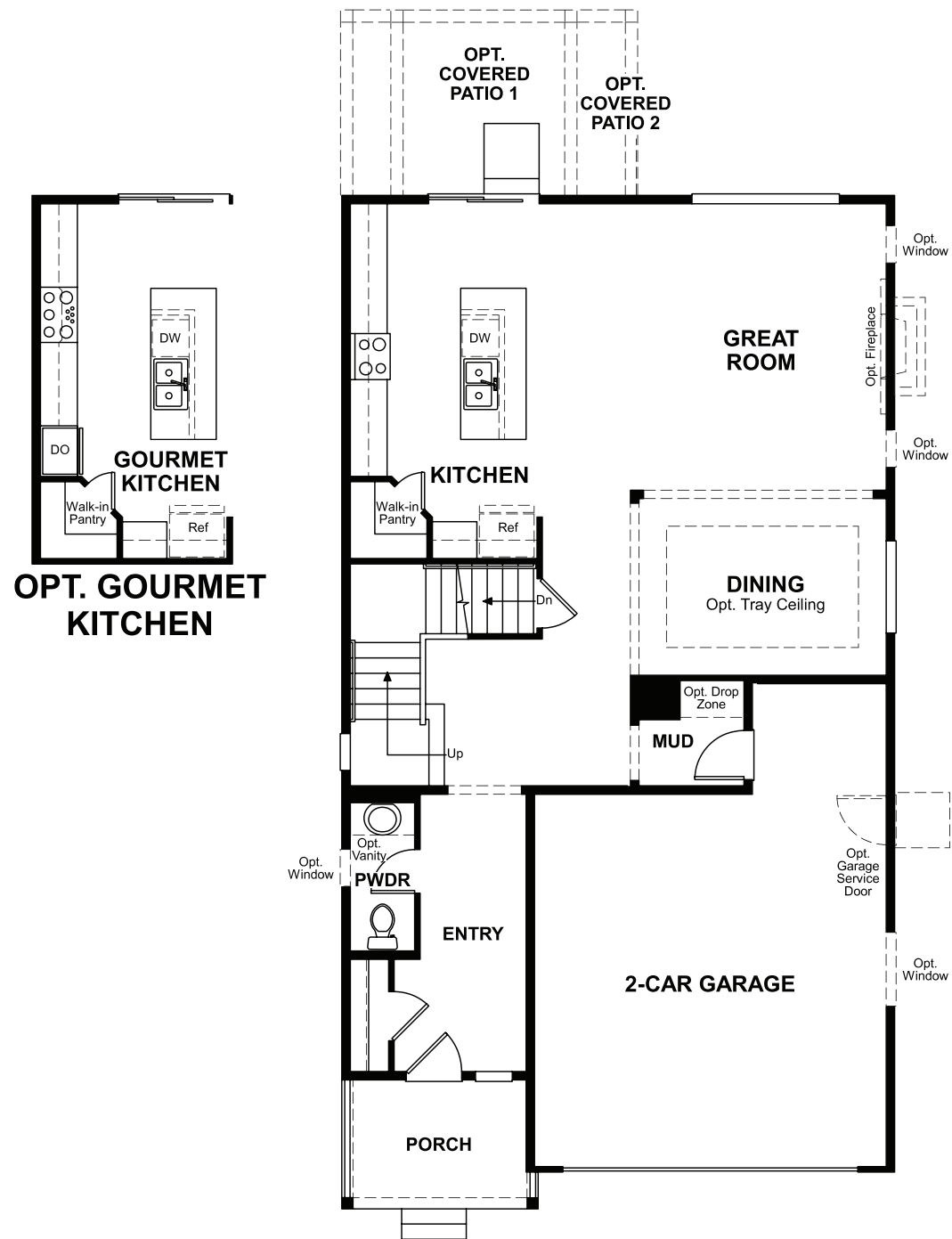


ELEVATION C

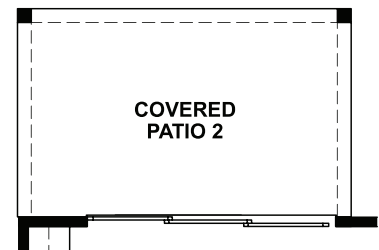
 Floor plans and renderings are conceptual drawings and may vary from actual plans and homes as built. Options and features may not be available on all homes and are subject to change without notice. Actual homes may vary from photos and/or drawings which show upgraded landscaping and may not represent the lowest-priced homes in the community. Features may include optional upgrades and may not be available on all homes. Square footage numbers are approximate and are subject to change without notice. Prices, specifications and availability subject to change without notice. ©2020 Richmond American Homes, Richmond American Homes of Colorado, Inc. 10/5/2020

MAIN FLOOR

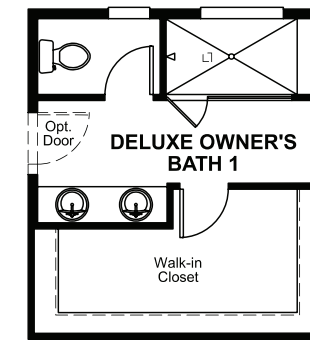
SECOND FLOOR



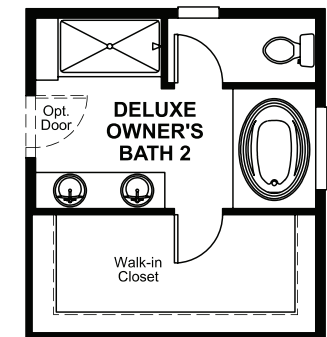
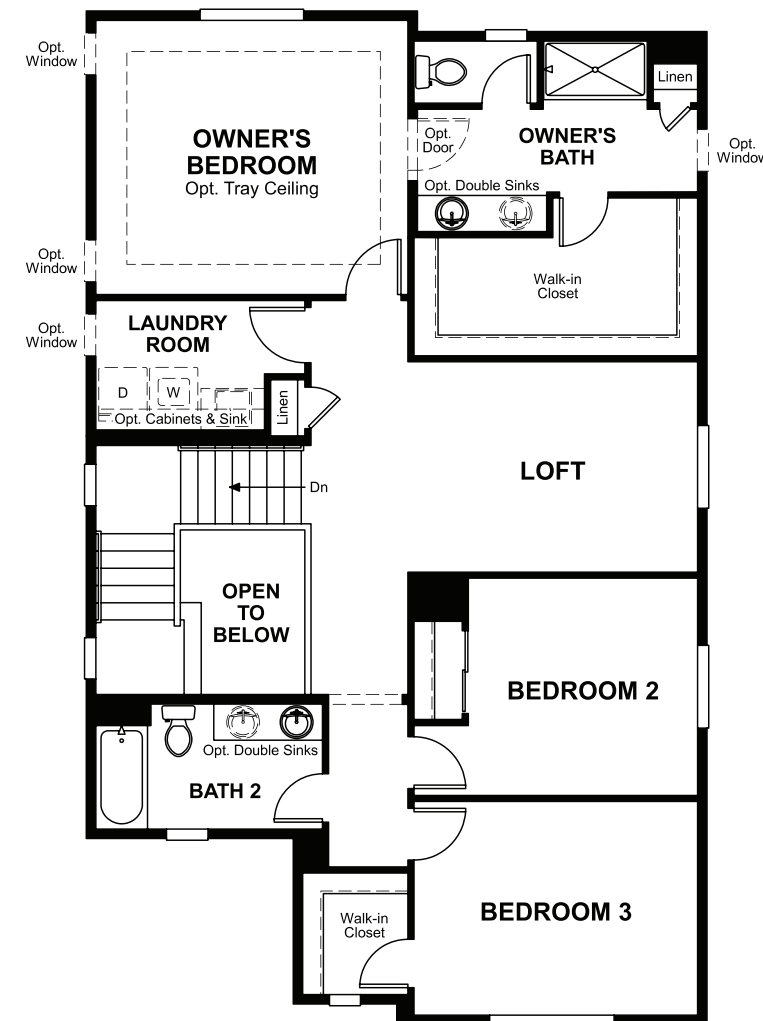
OPT. CENTER-MEET DOOR AT KITCHEN



OPT. MULTI-SLIDE DOOR AT KITCHEN



OPT. DELUXE OWNER'S BATH 1



OPT. DELUXE OWNER'S BATH 2



OPT. BEDROOM 4

Floor plans and renderings are conceptual drawings and may vary from actual plans and homes as built. Options and features may not be available on all homes and are subject to change without notice. Actual homes may vary from photos and/or drawings which show upgraded landscaping and may not represent the lowest-priced homes in the community. Features may include optional upgrades and may not be available on all homes. Square footage numbers are approximate and are subject to change without notice. Prices, specifications and availability subject to change without notice. ©2020 Richmond American Homes, Richmond American Homes of Colorado, Inc. 10/5/2020

Floor plans and renderings are conceptual drawings and may vary from actual plans and homes as built. Options and features may not be available on all homes and are subject to change without notice. Actual homes may vary from photos and/or drawings which show upgraded landscaping and may not represent the lowest-priced homes in the community. Features may include optional upgrades and may not be available on all homes. Square footage numbers are approximate and are subject to change without notice. Prices, specifications and availability subject to change without notice. ©2020 Richmond American Homes, Richmond American Homes of Colorado, Inc. 10/5/2020