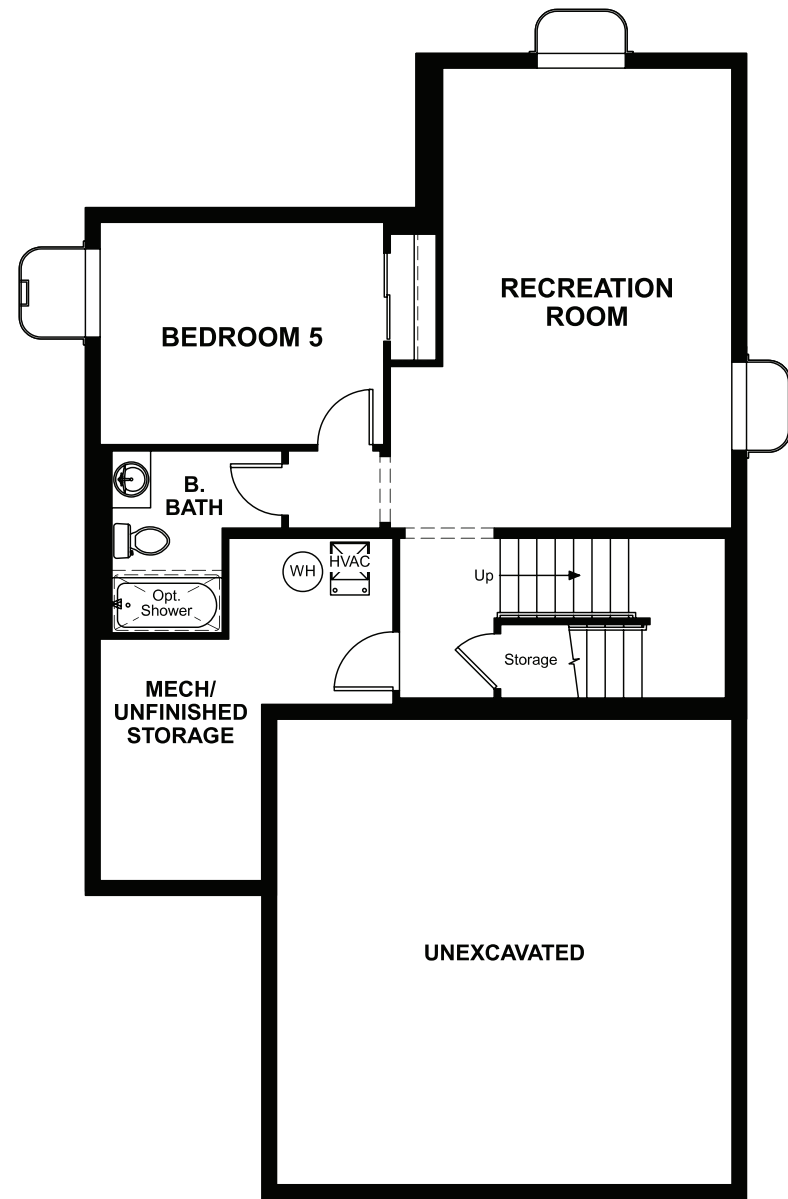


BASEMENT



**OPT. FINISHED BASEMENT**



ELEVATION B

**ABOUT THE LIGHTNER**

Entertain with ease in the open-concept Lightner floor plan. Guests are free to mingle in the dining and great rooms or out on the optional covered patio while you keep an eye on the refreshments in the well-appointed kitchen with center island. Upstairs, there's a convenient laundry, a versatile loft that may be used as a playroom or craft space, and three large bedrooms, including a serene owner's suite with a roomy walk-in closet and attached bath with optional deluxe features. Additional options include a gourmet kitchen, an extra bedroom in lieu of the loft and a finished basement.

**COMMUNITY LOCATION:**

Red Maple Ridge Neighborhood at Copperleaf | 4313 South Liverpool Court | Aurora, CO 80015 | **303.850.5750**

**HOME GALLERY LOCATION:**

Denver Metro Home Gallery™ | 8000 East Belleview Avenue, Suite C-12 | Greenwood Village, CO 80111 | **888.402.4663**




ELEVATION A



ELEVATION C

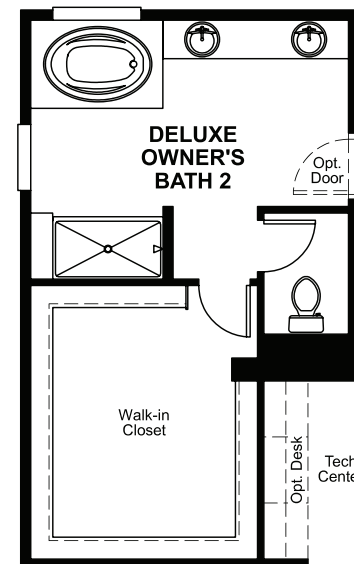
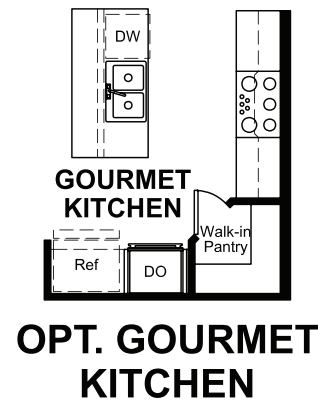
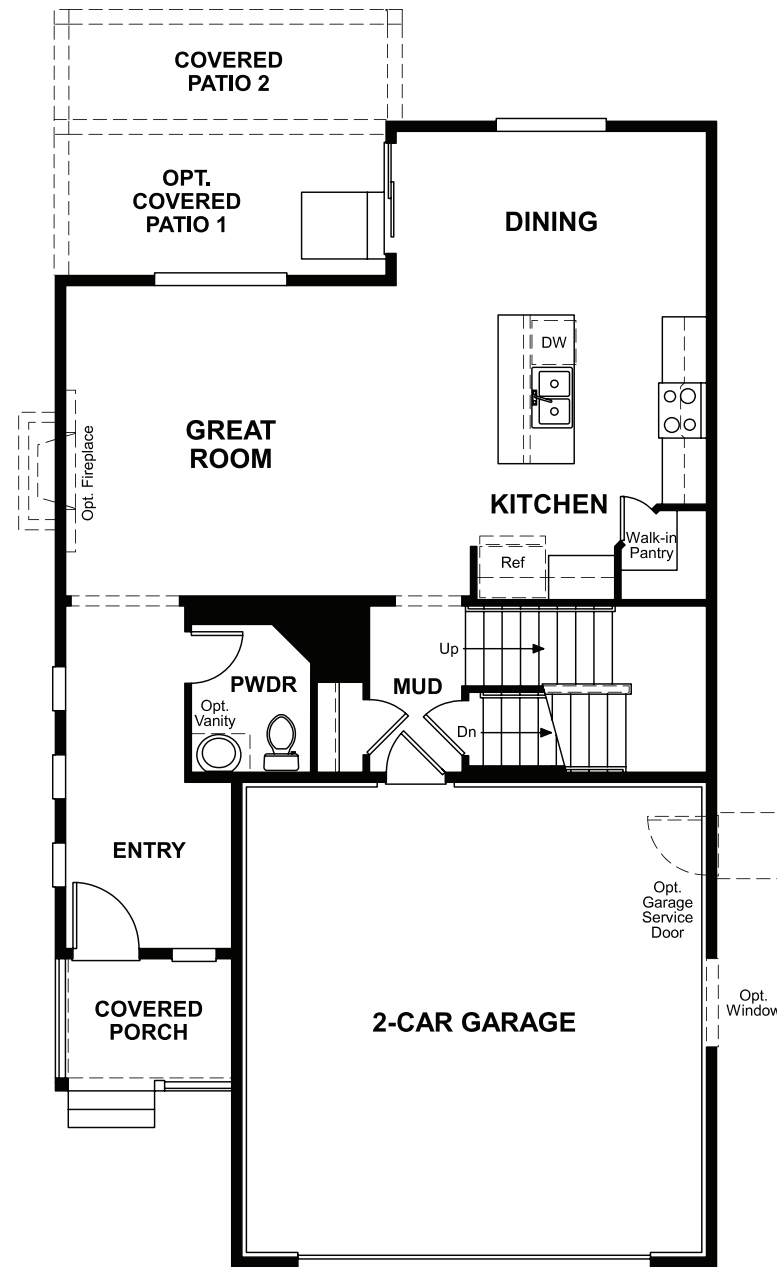


ELEVATION D

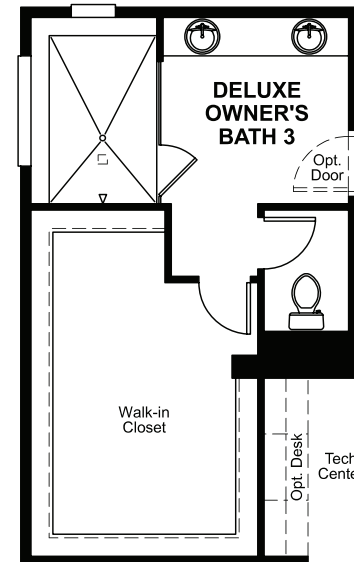
 Floor plans and renderings are conceptual drawings and may vary from actual plans and homes as built. Options and features may not be available on all homes and are subject to change without notice. Actual homes may vary from photos and/or drawings which show upgraded landscaping and may not represent the lowest-priced homes in the community. Features may include optional upgrades and may not be available on all homes. Square footage numbers are approximate and are subject to change without notice. Prices, specifications and availability subject to change without notice. ©2020 Richmond American Homes, Richmond American Homes of Colorado, Inc. 10/5/2020

MAIN FLOOR

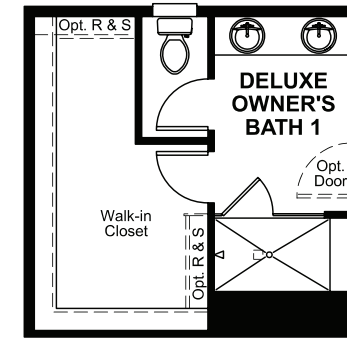
SECOND FLOOR



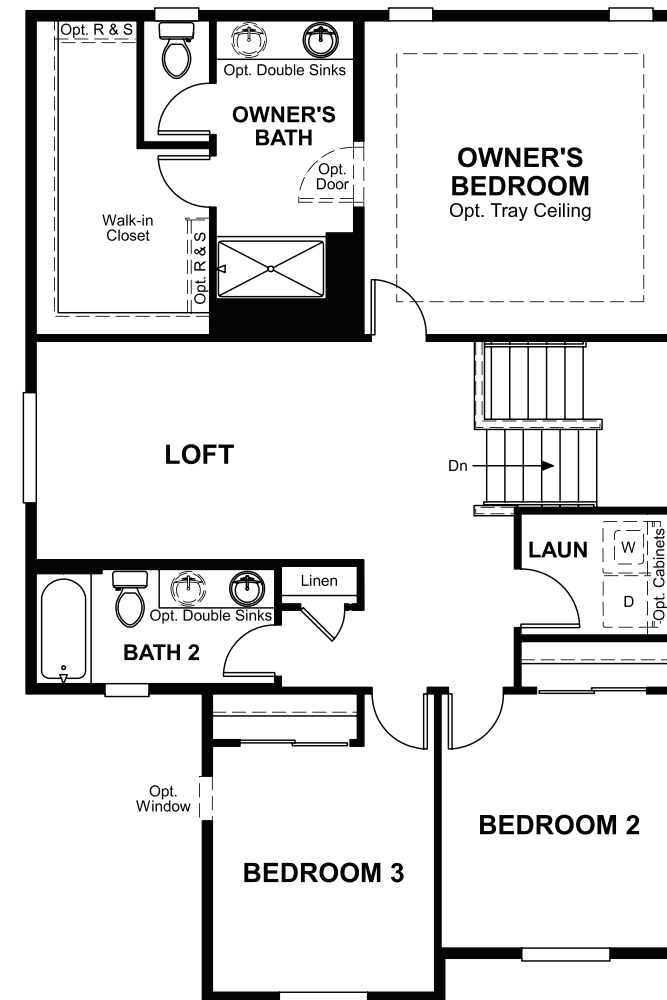
**OPT. DELUXE OWNER'S BATH 2**



**OPT. DELUXE OWNER'S BATH 3**



**OPT. DELUXE OWNER'S BATH 1**



Floor plans and renderings are conceptual drawings and may vary from actual plans and homes as built. Options and features may not be available on all homes and are subject to change without notice. Actual homes may vary from photos and/or drawings which show upgraded landscaping and may not represent the lowest-priced homes in the community. Features may include optional upgrades and may not be available on all homes. Square footage numbers are approximate and are subject to change without notice. Prices, specifications and availability subject to change without notice. ©2020 Richmond American Homes, Richmond American Homes of Colorado, Inc. 10/5/2020

Floor plans and renderings are conceptual drawings and may vary from actual plans and homes as built. Options and features may not be available on all homes and are subject to change without notice. Actual homes may vary from photos and/or drawings which show upgraded landscaping and may not represent the lowest-priced homes in the community. Features may include optional upgrades and may not be available on all homes. Square footage numbers are approximate and are subject to change without notice. Prices, specifications and availability subject to change without notice. ©2020 Richmond American Homes, Richmond American Homes of Colorado, Inc. 10/5/2020