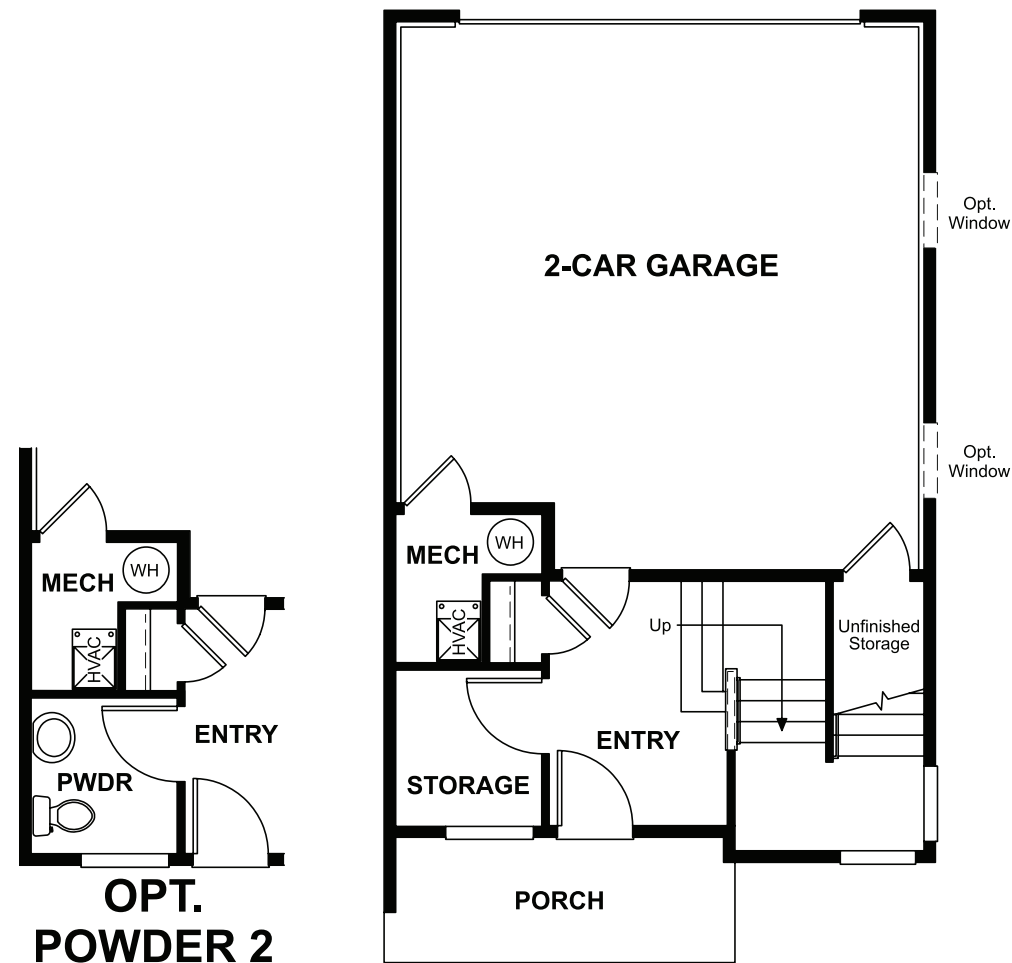


THE SOHO

Approx. 1,840 sq. ft. | 2 to 3 bed | 2.5-3.5 bath | 2-car garage | Plan #D568

LOWER FLOOR



ELEVATION D

ABOUT THE SOHO

Offering an array of attractive options, the Soho plan is designed to complement your modern lifestyle. Storage space on the lower floor of this standalone home can be optioned as a powder room, and the quiet main-floor study can be converted to a third bedroom. You'll also appreciate the spacious living room, which opens to an inviting kitchen with optional gourmet features. Upstairs, enjoy a lavish owner's suite with an optional deluxe bath.



ELEVATION C

COMMUNITY LOCATION:

Cityscape at Haskins Station | 5315 B Queen Court | Arvada, CO 80002 | 303.694.4788

DESIGN CENTER LOCATION:

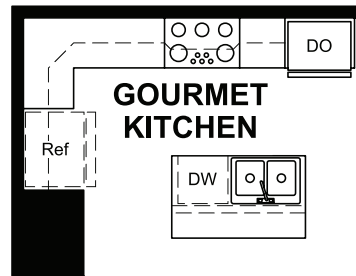
Denver Metro Home Gallery™ | 8000 E. Belleview Avenue, Suite C-12 | Greenwood Village, CO 80111 | 888.402.4663



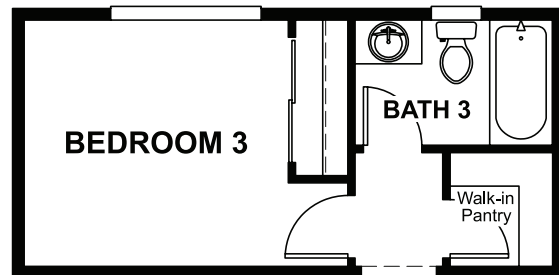
Floor plans and renderings are conceptual drawings and may vary from actual plans and homes as built. Options and features may not be available on all homes and are subject to change without notice. Actual homes may vary from photos and/or drawings which show upgraded landscaping and may not represent the lowest-priced homes in the community. Features may include optional upgrades and may not be available on all homes. Prices, specifications and availability are subject to change without notice. Square footage is approximate and subject to change without notice. ©2022 Richmond American Homes, Richmond American Homes of Colorado, Inc. 2/16/2022

MAIN FLOOR

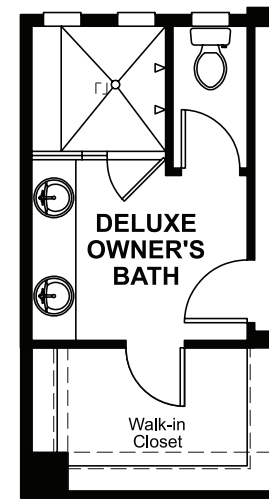
UPPER FLOOR



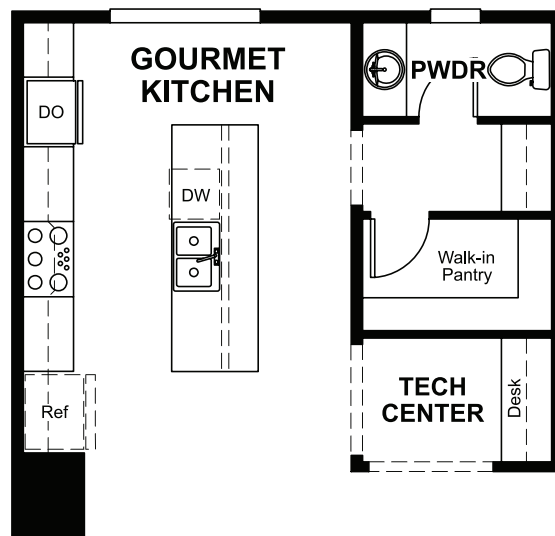
OPT. GOURMET KITCHEN



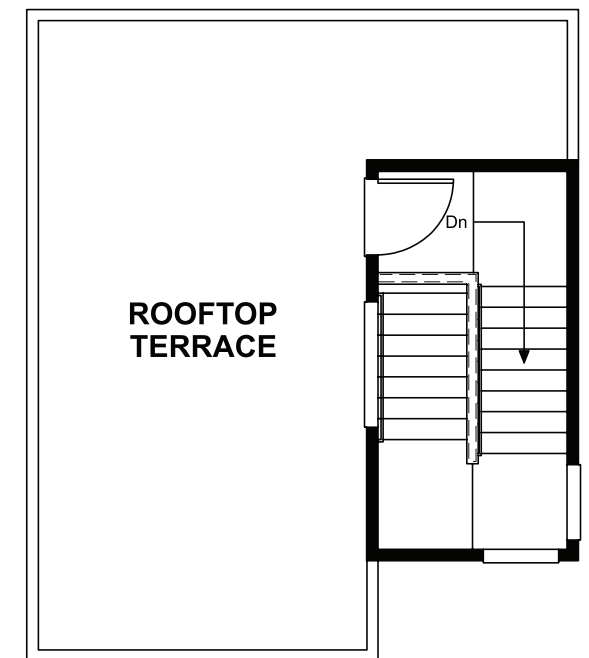
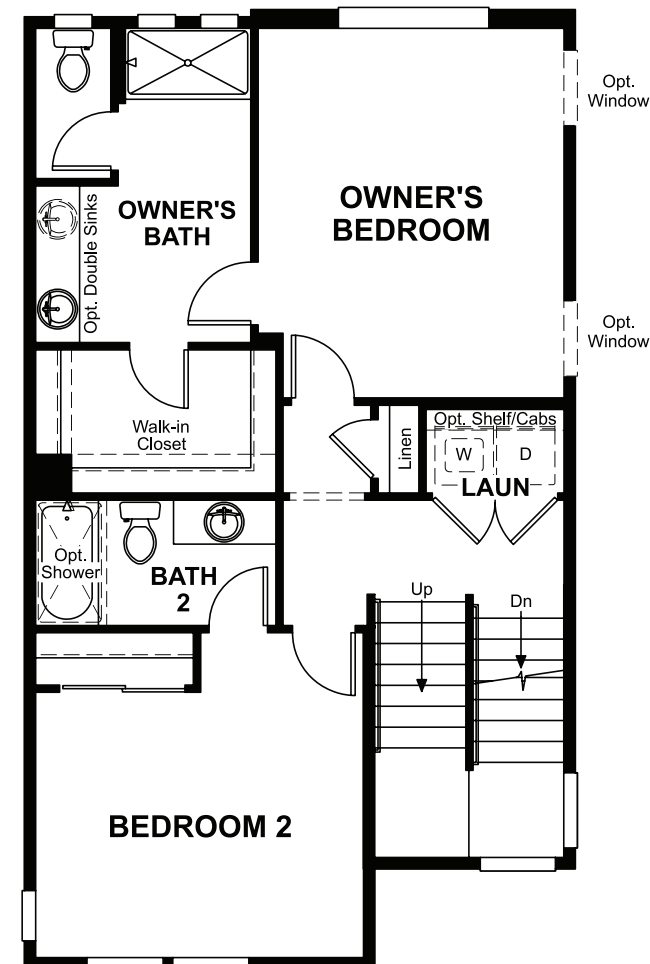
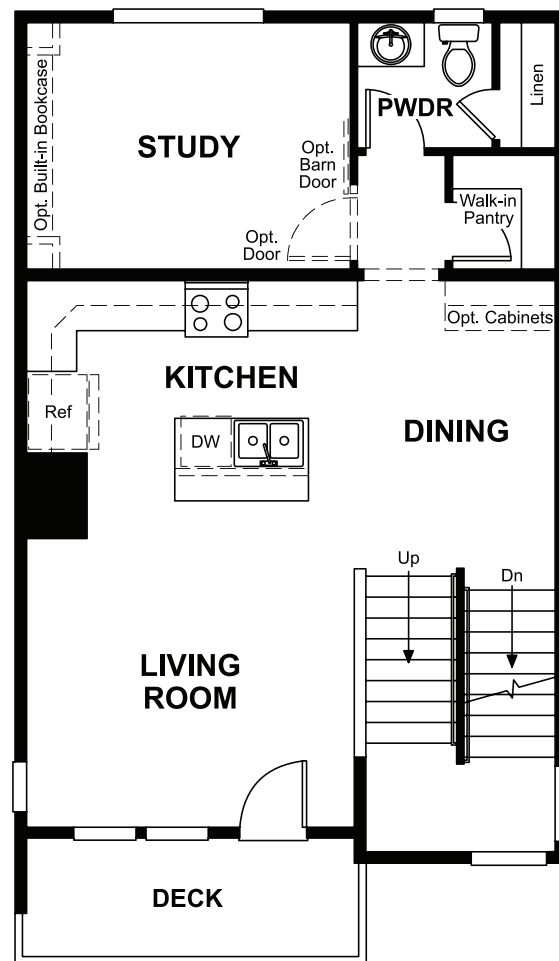
OPT. BEDROOM 3/BATH 3



OPT. DELUXE OWNER'S BATH



OPT. EXTENDED KITCHEN ISLAND



ROOFTOP TERRACE