



ELEVATION C

ABOUT THE DOMINIC

The ranch-style Dominic plan boasts an open, inviting layout for entertaining. At the heart of the home is a spacious great room that flows into a sunny kitchen with a center island, dual walk-in pantries and an inviting breakfast nook. A luxurious owner's suite features an immense walk-in closet and attached bath with double sinks, and is separated from two additional bedrooms for privacy. Other highlights include a teen room, study and a relaxing covered patio. Personalize this plan with a gourmet kitchen, deluxe owner's bath options, second owner's suite and more!

COMMUNITY LOCATION:

Falcon Ridge | 12721 West Sierra Vista Drive | Glendale, AZ 85307 | 623.404.7262

HOME GALLERY LOCATION:

Phoenix Home Gallery™ | 16427 North Scottsdale Road, Suite 175 | Scottsdale, AZ 85254 | 877.444.1485 Select Opt. 3

\*This information is presented for education purposes only. The HERS index for a confirmed rating will be determined by a third-party HERS rater based on data gathered from on-site observations and, if required, testing of rated features for a home as featured, optioned, located, oriented and/or built.

+Standard new home is based on the RESNET® Reference Home definition with a HERS® index of 100 (based on the 2006 International Energy Conservation Code).

++Typical resale home is based on the U.S. Department of Energy definition with a HERS® index of 130.

^RESNET® has developed the HERS® index to indicate the comparative efficiencies of homes. It is no guarantee that energy efficiencies will be achieved.

Floor plans and renderings are conceptual drawings and may vary from actual plans and homes as built. Options and features may not be available on all homes and are subject to change without notice. Actual homes may vary from photos and/or drawings which show upgraded landscaping and may not represent the lowest-priced homes in the community. Features may include optional upgrades and may not be available on all homes. Square footage numbers are approximate and are subject to change without notice. Prices, specifications and availability subject to change without notice. ©2021 Richmond American Homes, Richmond American Homes of Arizona, Inc. (a public report is available on the state real estate department's website), Richmond American Construction, Inc. ROC #206612. 4/2/2021

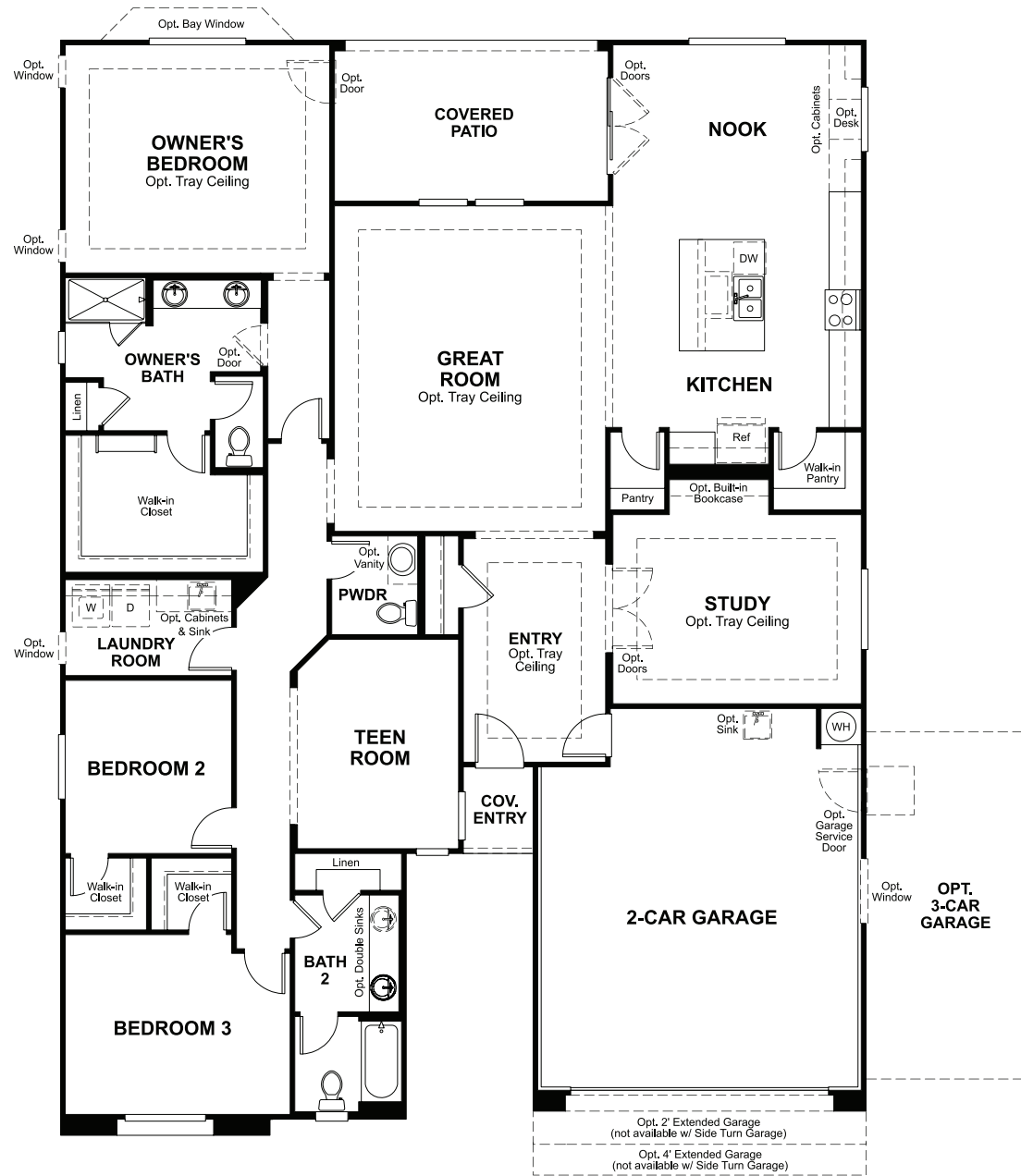


ELEVATION A

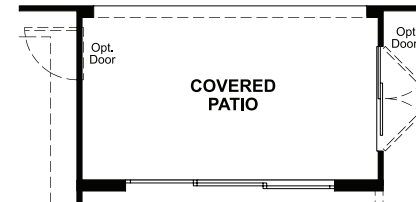


ELEVATION B - Shown with Optional Stone

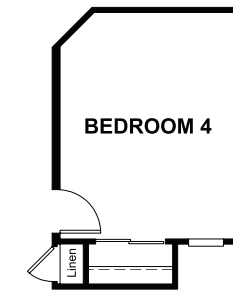
MAIN FLOOR



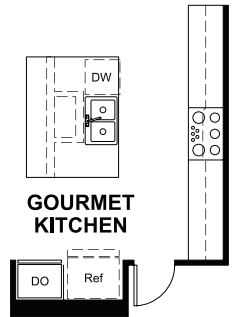
MAIN FLOOR OPTIONS



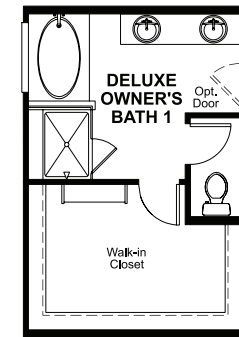
OPT. MULTI-SLIDE DOOR AT GREAT ROOM



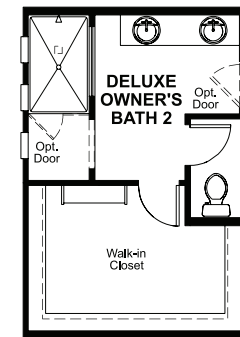
OPT. BEDROOM 4



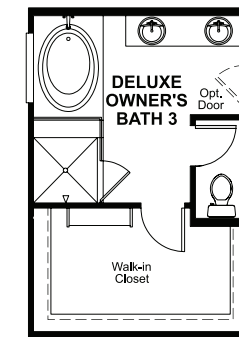
OPT. GOURMET KITCHEN



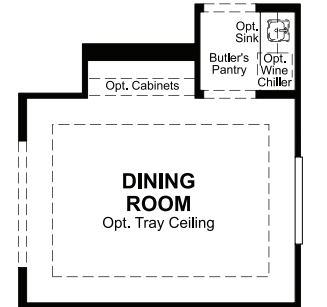
OPT. DELUXE OWNER'S BATH 1



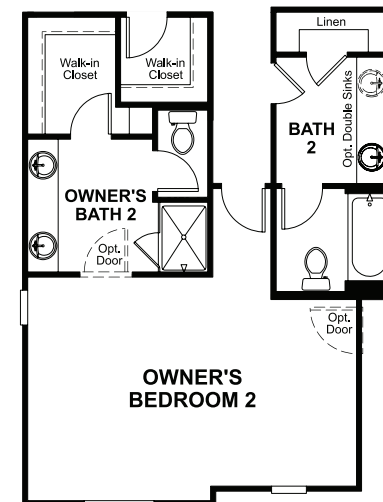
OPT. DELUXE OWNER'S BATH 2



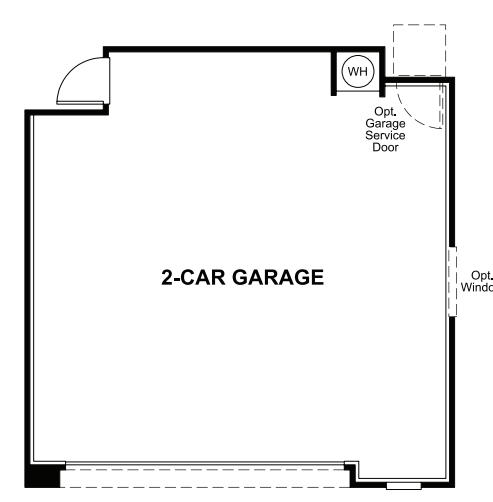
OPT. DELUXE OWNER'S BATH 3



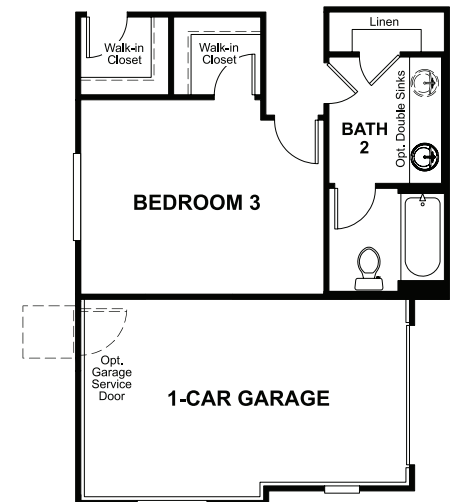
OPT. DINING ROOM W/ BUTLER'S PANTRY



OPT. OWNER'S BEDROOM 2 & OWNER'S BATH 2



OPT. EXTENDED GARAGE



OPT. SIDE TURN GARAGE

THIS PLAN'S PROJECTED **HERS® INDEX = 58\***  
 Projected Rating Based on Plans – Field Confirmation required

**How does this floor plan rate?**  
 Take a look: **100** = Standard new home+ **130** = Typical resale Home++  
 The lower number, the better! Refer to the RESNET® HERS index brochure or go to [www.RESNET.us](http://www.RESNET.us) and [www.HERSindex.com](http://www.HERSindex.com)

**What's a HERS® Index?** HERS stands for Home Energy Rating System, a system created by RESNET® to measure home energy efficiency. A Projected HERS index or rating is a computer simulation performed prior to construction by a third-party HERS rater using RESNET-accredited rating software, rated feature and specification data derived from home plans, features and specifications, and other data selected or assumed by the rater. The projected HERS index is approximate and is subject to change without notice. Actual results will vary.