

THE PERIDOT

Approx. 1,590-1,720 sq. ft. | 3-4 bedrooms | 2 baths | 3-car garage | Plan #P908



ELEVATION C

ABOUT THE PERIDOT

With a versatile ranch-style layout, the Peridot was designed with your comfort and lifestyle in mind. A kitchen with a convenient center island overlooks a dining room and a great room with patio access. Add an extended covered patio for the perfect outdoor living space. Along the main hall, two inviting bedrooms share a bathroom, while the owner's suite is located on the other side of the home—boasting a large walk-in closet and a private bath with double sinks. You'll also love a centrally located laundry room, as well as a spacious storage area. Additional options include a study and a fourth bedroom.



ELEVATION A



ELEVATION B

COMMUNITY LOCATION:

Seasons at Lakes at Rancho El Dorado II | 21908 North Daniel Drive | Maricopa, AZ 85138 | **520.348.7117**

HOME GALLERY LOCATION:

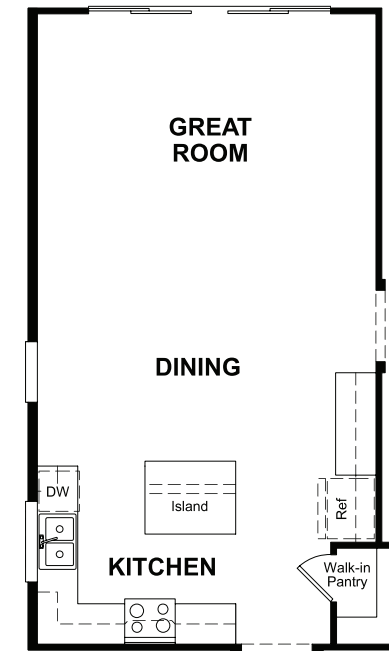
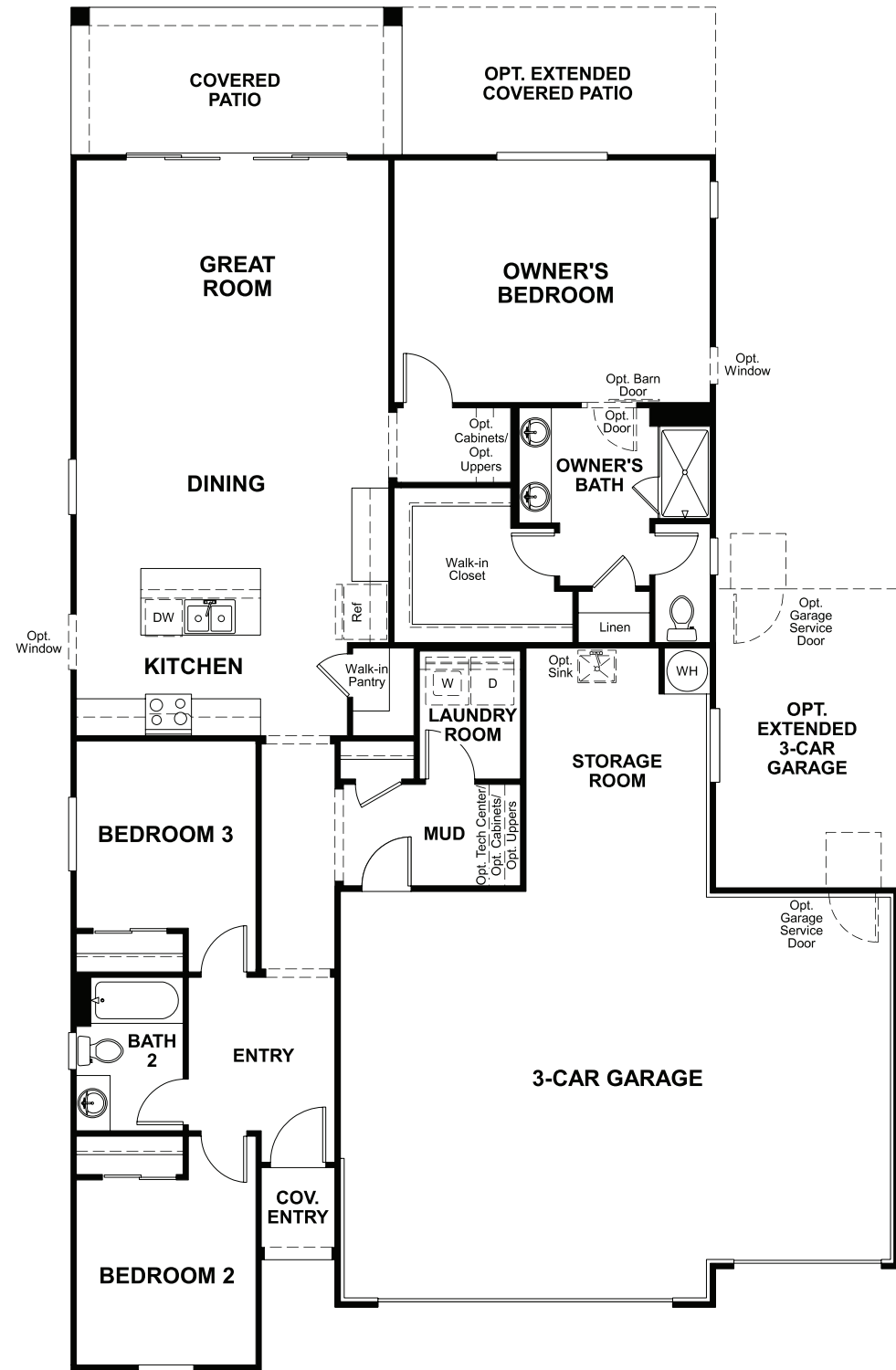
Phoenix Home Gallery™ | 16427 North Scottsdale Road, Suite 175 | Scottsdale, AZ 85254 | **877.444.1485 Select Opt. 3**



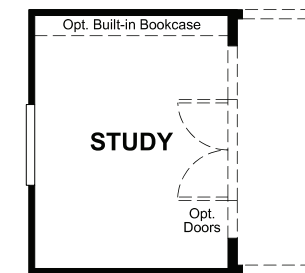
Floor plans and renderings are conceptual drawings and may vary from actual plans and homes as built. Options and features may not be available on all homes and are subject to change without notice. Actual homes may vary from photos and/or drawings which show upgraded landscaping and may not represent the lowest-priced homes in the community. Features may include optional upgrades and may not be available on all homes. Square footage numbers are approximate and are subject to change without notice. Prices, specifications and availability subject to change without notice. ©2020 Richmond American Homes, Richmond American Homes of Arizona, Inc. (a public report is available on the state real estate department's website), Richmond American Construction, Inc. ROC #206612. 12/29/2020

MAIN FLOOR

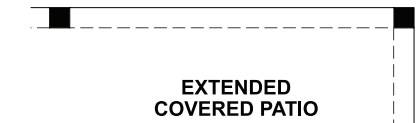
MAIN FLOOR OPTIONS



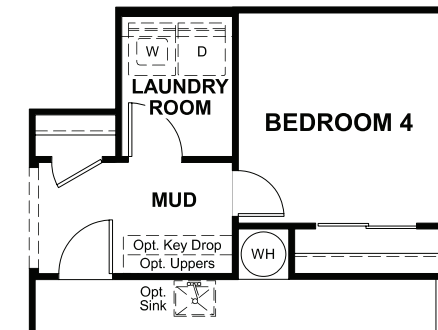
OPT. KITCHEN #2



OPT. STUDY



OPT. SLIDING GLASS DOOR AT OWNER'S BEDROOM TO PATIO WITH EXTENDED COVERED PATIO



OPT. BEDROOM 4 & 2 OR 3-CAR GARAGE

Floor plans and renderings are conceptual drawings and may vary from actual plans and homes as built. Options and features may not be available on all homes and are subject to change without notice. Actual homes may vary from photos and/or drawings which show upgraded landscaping and may not represent the lowest-priced homes in the community. Features may include optional upgrades and may not be available on all homes. Square footage numbers are approximate and are subject to change without notice. Prices, specifications and availability subject to change without notice. ©2020 Richmond American Homes, Richmond American Homes of Arizona, Inc. (a public report is available on the state real estate department's website), Richmond American Construction, Inc. ROC #206612. 12/29/2020

Floor plans and renderings are conceptual drawings and may vary from actual plans and homes as built. Options and features may not be available on all homes and are subject to change without notice. Actual homes may vary from photos and/or drawings which show upgraded landscaping and may not represent the lowest-priced homes in the community. Features may include optional upgrades and may not be available on all homes. Square footage numbers are approximate and are subject to change without notice. Prices, specifications and availability subject to change without notice. ©2020 Richmond American Homes, Richmond American Homes of Arizona, Inc. (a public report is available on the state real estate department's website), Richmond American Construction, Inc. ROC #206612. 12/29/2020