



ELEVATION D

ABOUT THE PRESLEY

The eye-catching Presley plan was designed for entertaining, boasting an open great room and a deluxe kitchen with a center island, dining area and optional gourmet features. You'll also appreciate a private study and a convenient powder room, which can be optioned as an additional bedroom and bathroom. Upstairs, discover a central laundry, a versatile loft and two generous bedrooms with walk-in closets and a shared bath. There is also an elegant primary suite featuring an immense walk-in closet and private bath with optional walk-in shower or deluxe features. Additional options include a sunroom, an extra bedroom and bathroom in lieu of the loft, a covered patio, center-meet or multi-slide patio doors and a 3-car garage.

COMMUNITY LOCATION:

Sutton at Parklane | 1250 Yale Drive | Dixon, CA 95620 | 707.389.7453

HOME GALLERY LOCATION:

Northern California Home Gallery™ | One Harbor Center, Suite 150 | Suisun City, CA 94585 | 707.416.2800

\*This information is presented for education purposes only. The HERS index for a confirmed rating will be determined by a third-party HERS rater based on data gathered from on-site observations and, if required, testing of rated features for a home as featured, optioned, located, oriented and/or built.

+Standard new home is based on the RESNET® Reference Home definition with a HERS® index of 100 (based on the 2006 International Energy Conservation Code).

++Typical resale home is based on the U.S. Department of Energy definition with a HERS® index of 130.

^RESNET® has developed the HERS® index to indicate the comparative efficiencies of homes. It is no guarantee that energy efficiencies will be achieved.

Floor plans and renderings are conceptual drawings and may vary from actual plans and homes as built. Options and features may not be available on all homes and are subject to change without notice. Actual homes may vary from photos and/or drawings which show upgraded landscaping and may not represent the lowest-priced homes in the community. Features may include optional upgrades and may not be available on all homes. Square footage numbers are approximate and are subject to change without notice. ©2023 Richmond American Homes, Richmond American Homes of Maryland, Inc., California Department of Real Estate – Real Estate Broker, Corporation License Number 01842595. 09/23/2023



ELEVATION A



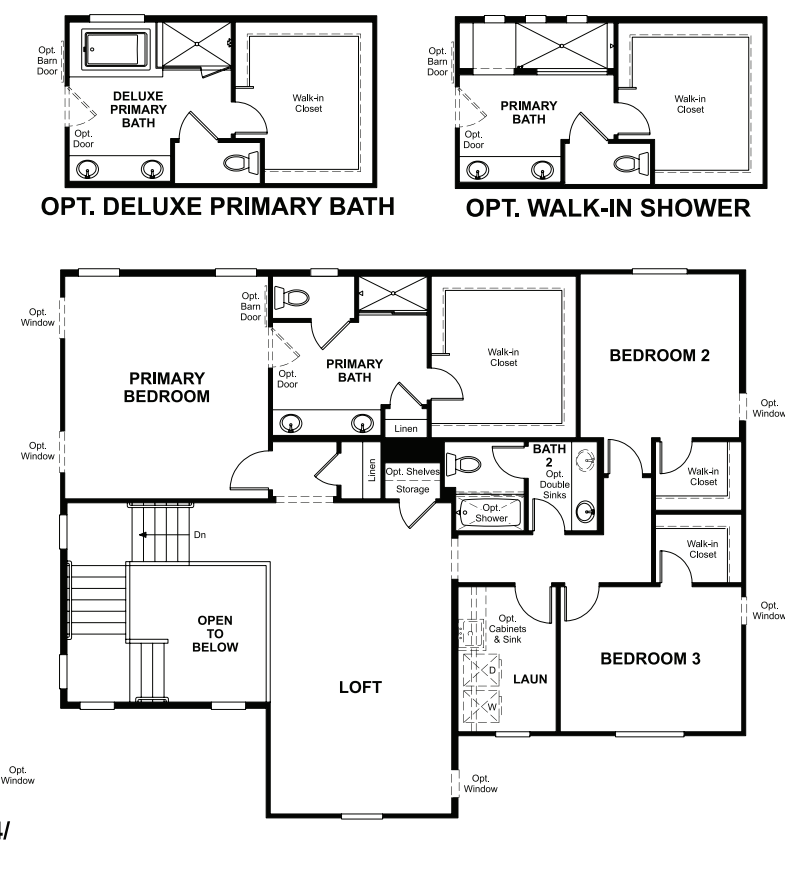
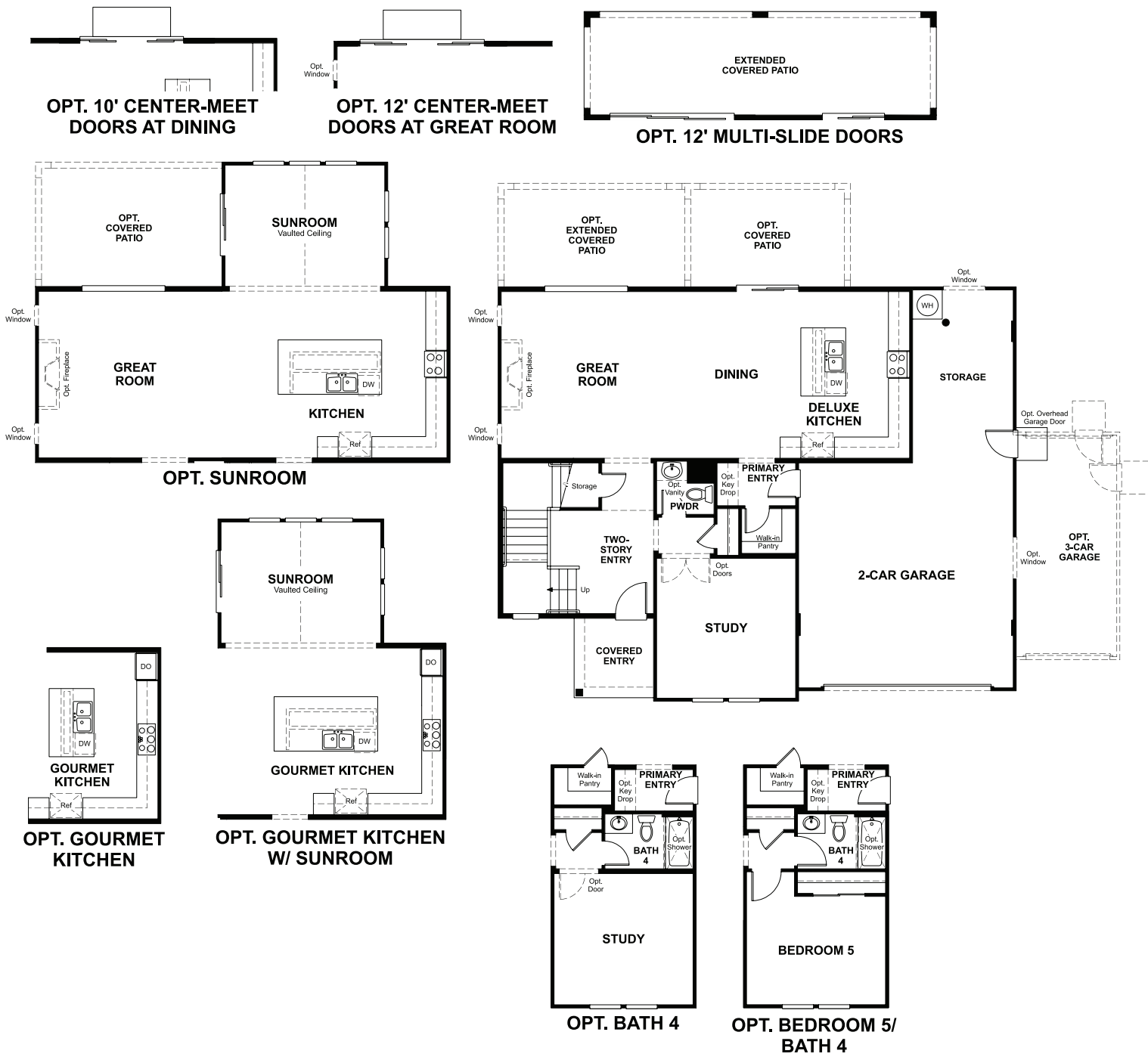
ELEVATION B



ELEVATION C

MAIN FLOOR  
PRELIMINARY

SECOND FLOOR  
PRELIMINARY



THIS PLAN'S PROJECTED  
**HERS® INDEX = 25\***  
Projected Rating Based on Plans – Field Confirmation required

**How does this floor plan rate?**  
Take a look: **100** = Standard new home+ **130** = Typical resale Home++  
The lower number, the better! Refer to the RESNET® HERS index brochure or go to [www.RESNET.us](http://www.RESNET.us) and [www.HERSindex.com](http://www.HERSindex.com)

**What's a HERS® Index?** HERS stands for Home Energy Rating System, a system created by RESNET® to measure home energy efficiency. A Projected HERS index or rating is a computer simulation performed prior to construction by a third-party HERS rater using RESNET-accredited rating software, rated feature and specification data derived from home plans, features and specifications, and other data selected or assumed by the rater. The projected HERS index is approximate and is subject to change without notice. Actual results will vary.