



ELEVATION C

ABOUT THE ARLINGTON

The ranch-style Arlington offers elegant design and an array of luxurious options. At the heart of the open floor plan is a well-appointed kitchen with a walk-in pantry, convenient island and optional deluxe or gourmet features. The kitchen overlooks a dining nook and an expansive great room with an optional fireplace. Entertain often? Personalize this plan with one of three covered patio options. The owner's suite is adjacent, boasting an immense walk-in closet and a private bath that can be optioned with a walk-in shower or deluxe features. A study, a laundry and two bedrooms flanking a bath round out the home. Additional options include a fourth bedroom in lieu of the study, 12' center-meet or multi-slide doors at the patio and a 3-car garage.



ELEVATION A



ELEVATION B

COMMUNITY LOCATION:

Stone Bluff at White Rock Springs Ranch | 3369 Rock Springs Ranch Drive | Folsom, CA 95630 | **916.472.7392**

DESIGN CENTER LOCATION:

Northern California Home Gallery™ | One Harbor Center, Suite 150 | Suisun City, CA 94585 | **707.416.2800**

*This information is presented for educational purposes only. The HERS® index for a confirmed rating will be determined by a third-party HERS rater based on data gathered from on-site observations and, if required, testing of rated features for a home as featured, optioned, located, oriented and/or built.

**Standard new home is based on the RESNET® Reference Home definition with a HERS index of 100 (based on the 2006 International Energy Conservation Code).

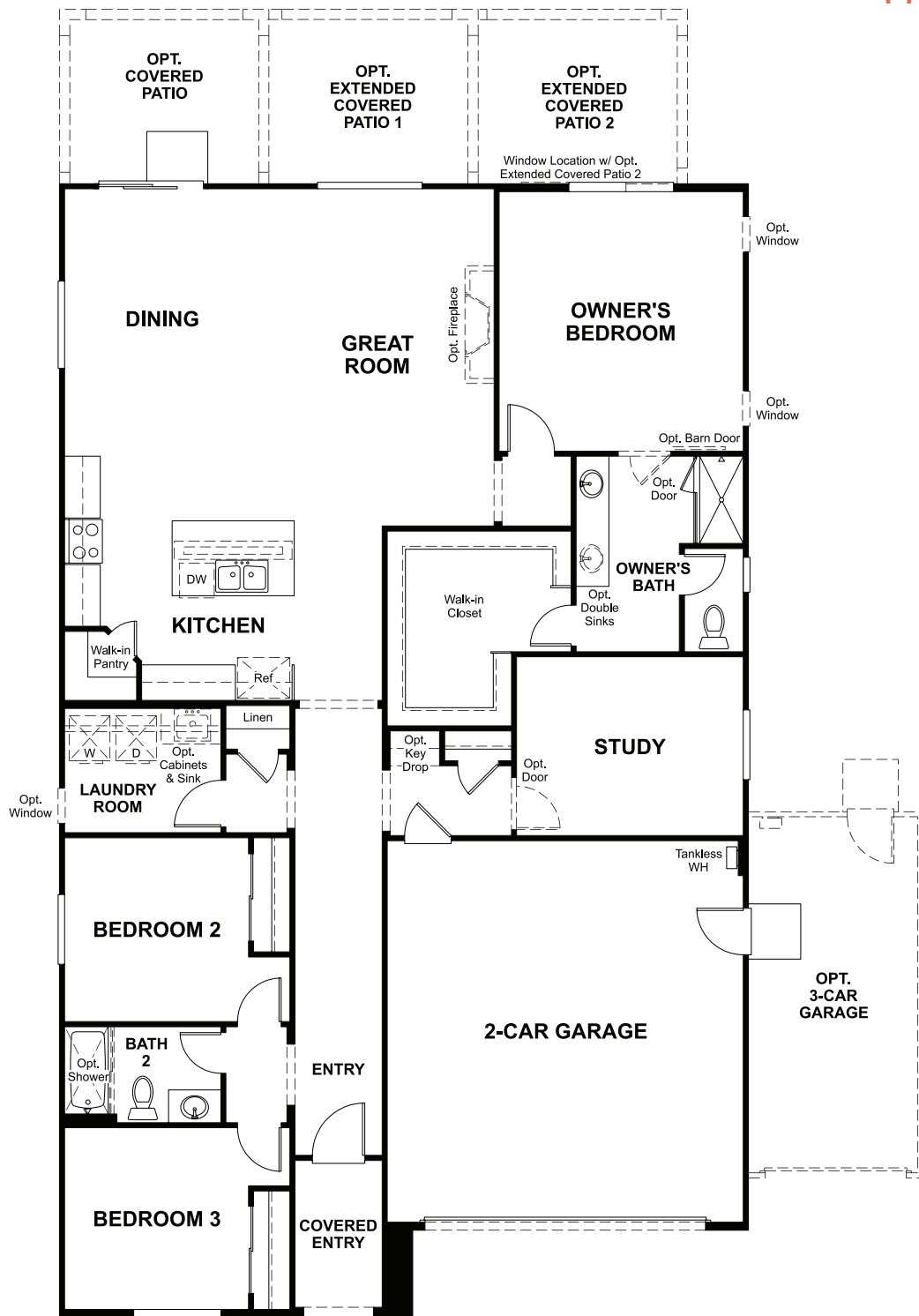
***Typical resale home is based on the U.S. Department of Energy definition with a HERS index of 130.

^RESNET has developed the HERS index to indicate the comparative efficiencies of homes. It is no guarantee that energy efficiencies will be achieved.

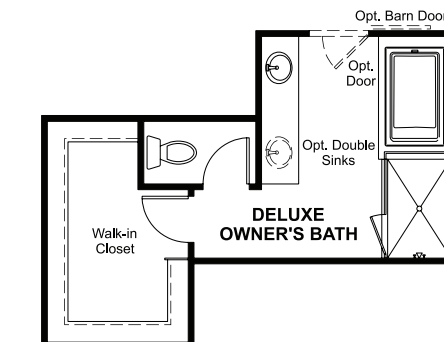
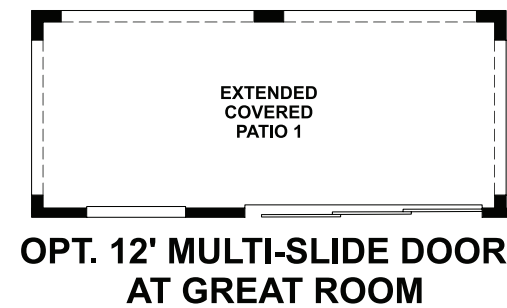
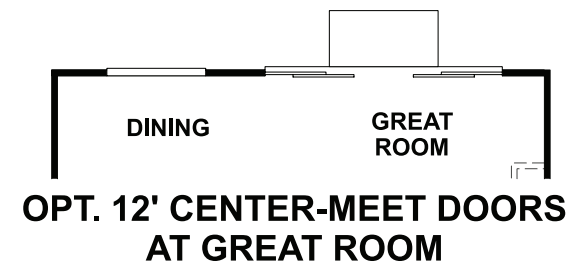


Floor plans and renderings are conceptual drawings and may vary from actual plans and homes as built. Options and features may not be available on all homes and are subject to change without notice. Actual homes may vary from photos and/or drawings which show upgraded landscaping and may not represent the lowest-priced homes in the community. Features may include optional upgrades and may not be available on all homes. Prices, specifications and availability are subject to change without notice. Square footage is approximate and subject to change without notice. ©2022 Richmond American Homes, Richmond American Homes of Maryland, Inc., California Department of Real Estate – Real Estate Broker, Corporation License Number 01842595. 02/18/2022

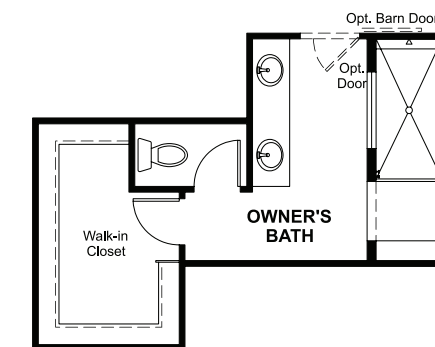
MAIN FLOOR
PRELIMINARY



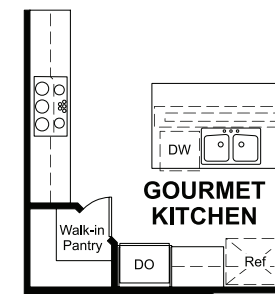
MAIN-FLOOR OPTIONS
PRELIMINARY



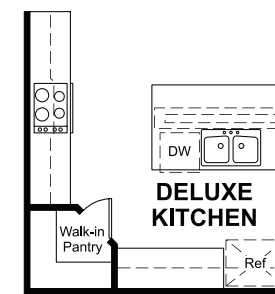
OPT. DELUXE OWNER'S BATH



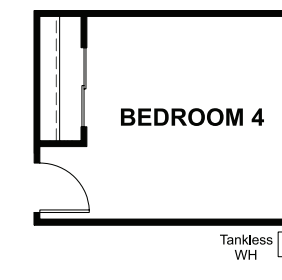
OPT. WALK-IN SHOWER



OPT. GOURMET KITCHEN



OPT. DELUXE KITCHEN



OPT. BEDROOM 4

THIS PLAN'S PROJECTED
HERS® INDEX = 23*
Projected rating based on plans – field confirmation required

How does this floor plan rate?
Take a look: **100** = standard new home™ **130** = typical resale home™
The lower the number, the better! Refer to the RESNET® HERS index brochure or go to RESNET.us and HERSindex.com

What's a HERS® index? HERS stands for Home Energy Rating System, a system created by RESNET® to measure home energy efficiency. ^
A projected HERS index or rating is a computer simulation performed prior to construction by a third-party HERS rater using RESNET-accredited rating software, rated feature and specification data derived from home plans, features and specifications, and other data selected or assumed by the rater. The projected HERS index is approximate and is subject to change without notice. Actual results will vary.