

THE AGATE

Approx. 2,080 sq. ft. | 3 to 4 bed | 2 to 3 bath | 2-car garage | Plan #S922



ELEVATION C

ABOUT THE AGATE

The thoughtfully designed Agate floor plan offers an open layout showcasing a kitchen with a center island, a great room and a dining area. The owner's suite is adjacent, and includes a walk-in closet and a private bath. You'll also find a flex room that can be optioned as an additional bedroom and bath. Personalize this versatile ranch plan with a covered patio!

COMMUNITY LOCATIONS: Sales office located at Seasons at Luna Road

Seasons at Eastview Lane | Eastview Lane and Cobalt Road | Victorville, CA 92392 | **760.653.7010**

Seasons at Luna Road | 13286 Homeland Street | Victorville, CA 92392 | **760.653.7010**

DESIGN CENTER LOCATION:

Southern California Home GalleryTM | 5171 California Avenue, Suite 110 | Irvine, CA 92617 | **909.579.3288**

*This information is presented for educational purposes only. The HERS® index for a confirmed rating will be determined by a third-party HERS rater based on data gathered from on-site observations and, if required, testing of rated features for a home as featured, optioned, located, oriented and/or built.

**Standard new home is based on the RESNET® Reference Home definition with a HERS index of 100 (based on the 2006 International Energy Conservation Code).

***Typical resale home is based on the U.S. Department of Energy definition with a HERS index of 130.

^RESNET has developed the HERS index to indicate the comparative efficiencies of homes. It is no guarantee that energy efficiencies will be achieved.

Floor plans and renderings are conceptual drawings and may vary from actual plans and homes as built. Options and features may not be available on all homes and are subject to change without notice. Actual homes may vary from photos and/or drawings which show upgraded landscaping and may not represent the lowest-priced homes in the community. Features may include optional upgrades and may not be available on all homes. Prices, specifications and availability are subject to change without notice. Square footage is approximate and subject to change without notice. ©2021 Richmond American Homes, Richmond American Homes of Maryland, Inc., California Department of Real Estate – Real Estate Broker, Corporation License Number 01842595. 5/7/2021

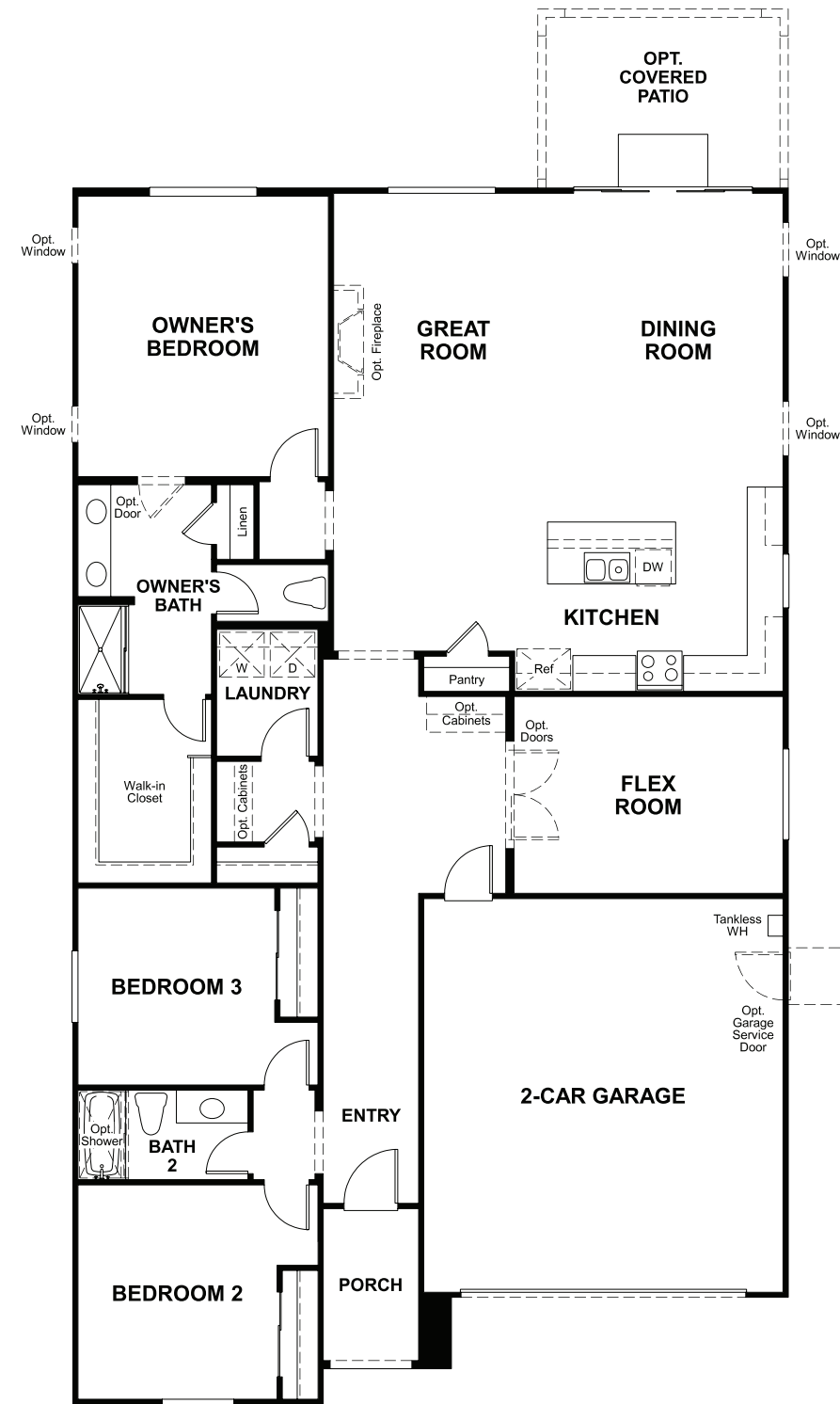


ELEVATION A

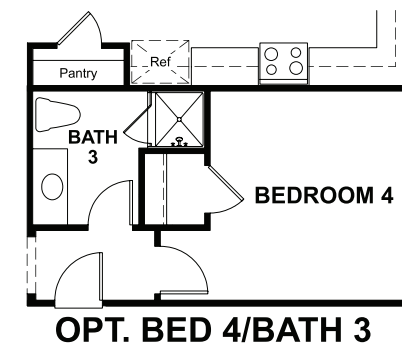


ELEVATION B

MAIN FLOOR
PRELIMINARY



MAIN-FLOOR OPTIONS
PRELIMINARY



THIS PLAN'S PROJECTED
HERS® INDEX = 29*
Projected rating based on plans – field confirmation required

How does this floor plan rate?
Take a look: **100** = standard new home™ **130** = typical resale home™
The lower the number, the better! Refer to the RESNET® HERS index brochure
or go to RESNET.us and HERSindex.com

What's a HERS® index? HERS stands for Home Energy Rating System, a system created by RESNET® to measure home energy efficiency. ^
A projected HERS index or rating is a computer simulation performed prior to construction by a third-party HERS rater using RESNET-accredited rating software, rated feature and specification data derived from home plans, features and specifications, and other data selected or assumed by the rater. The projected HERS index is approximate and is subject to change without notice. Actual results will vary.