



ELEVATION C

ABOUT THE HANSON

Discover the Hanson, a thoughtful ranch plan with three generous bedrooms—including a lavish owner's suite with a private bath—and an open, airy layout for entertaining. Highlights include a quiet study, an expansive great room and an impressive kitchen with a walk-in pantry, center island and optional gourmet features. You'll also appreciate a large covered patio, a 2-car garage with a third tandem space and a convenient RV garage. Make this home your own with an optional home management center and a dining room or fourth bedroom in lieu of the study.

COMMUNITY LOCATION:

The Preserve at Canyon Trails | 17485 W. Sherman Street | Goodyear, AZ 85338 | 623.915.6275

DESIGN CENTER LOCATION:

Phoenix Home Gallery™ | 16427 N. Scottsdale Road, Suite 175 | Scottsdale, AZ 85254 | 877.444.1485 (Select Option 3)

*This information is presented for educational purposes only. The HERS® index for a confirmed rating will be determined by a third-party HERS rater based on data gathered from on-site observations and, if required, testing of rated features for a home as featured, optioned, located, oriented and/or built.

**Standard new home is based on the RESNET® Reference Home definition with a HERS index of 100 (based on the 2006 International Energy Conservation Code).

***Typical resale home is based on the U.S. Department of Energy definition with a HERS index of 130.

^RESNET has developed the HERS index to indicate the comparative efficiencies of homes. It is no guarantee that energy efficiencies will be achieved.

Floor plans and renderings are conceptual drawings and may vary from actual plans and homes as built. Options and features may not be available on all homes and are subject to change without notice. Actual homes may vary from photos and/or drawings which show upgraded landscaping and may not represent the lowest-priced homes in the community. Features may include optional upgrades and may not be available on all homes. Prices, specifications and availability are subject to change without notice. ©2021 Richmond American Homes, Richmond American Homes of Arizona, Inc. (a public report is available on the state real estate department's website), Richmond American Construction, Inc. ROC #206612. 9/9/2021

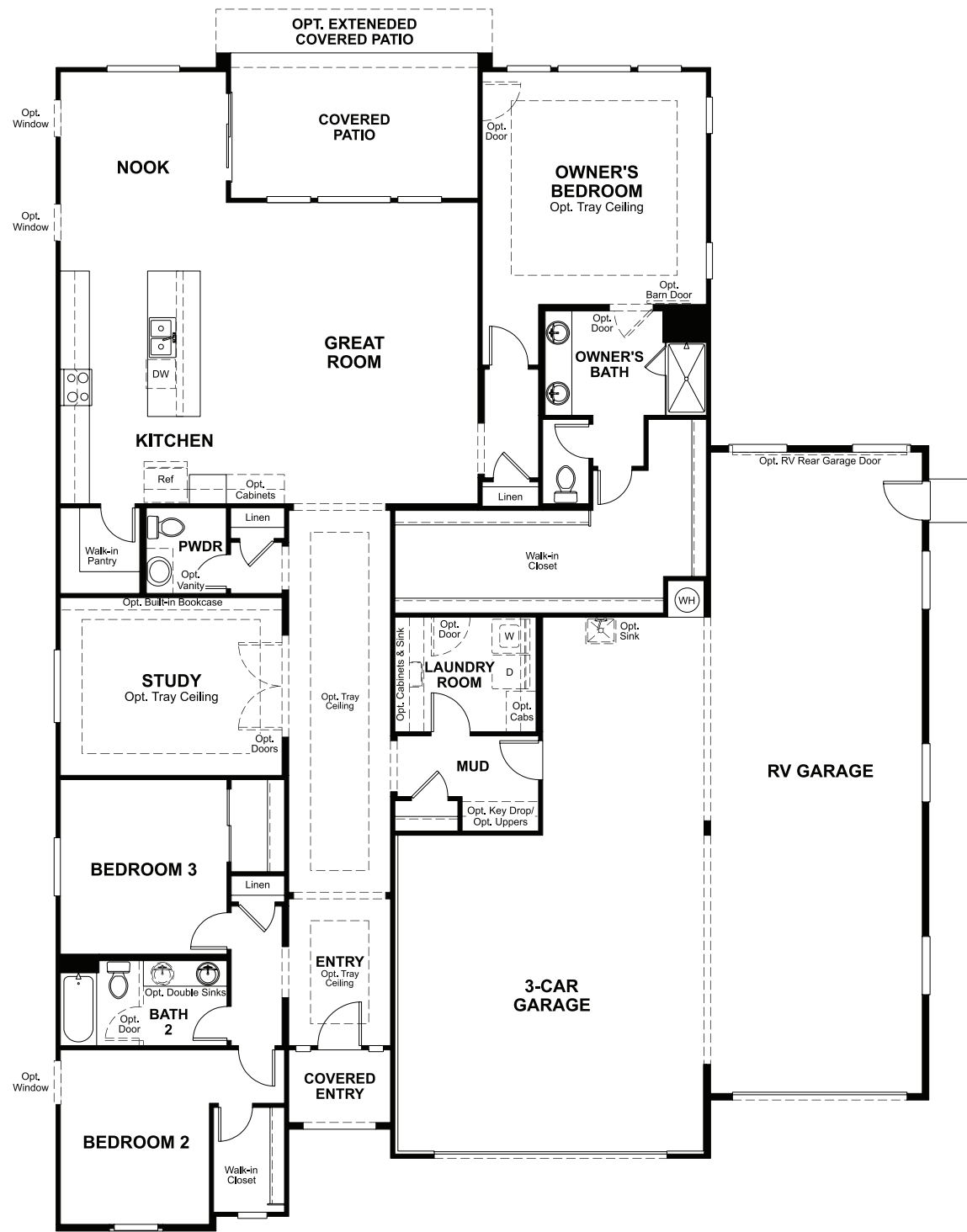


ELEVATION A

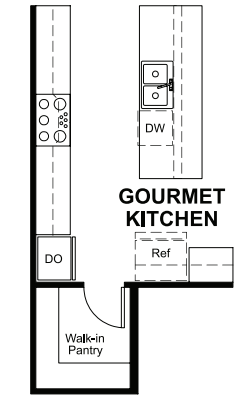


ELEVATION B

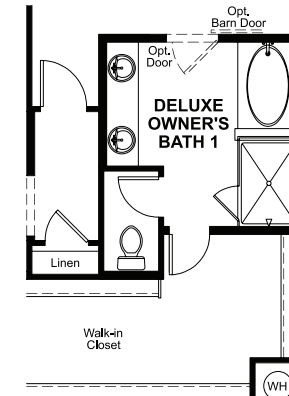
MAIN FLOOR



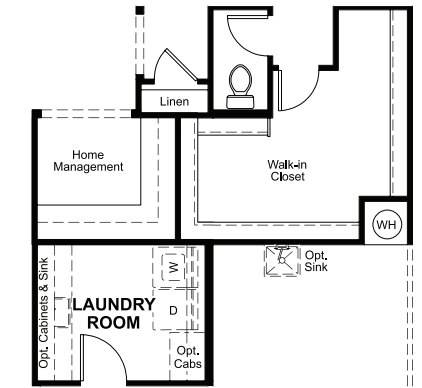
MAIN-FLOOR OPTIONS



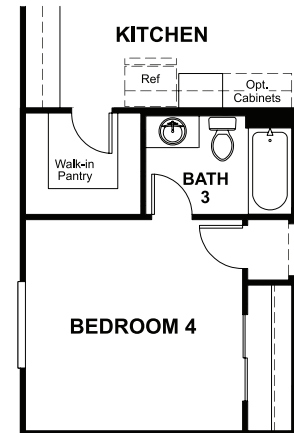
OPT. GOURMET KITCHEN



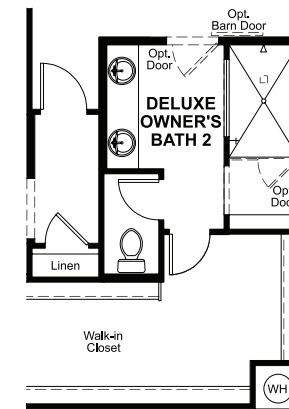
OPT. DELUXE OWNER'S BATH #1



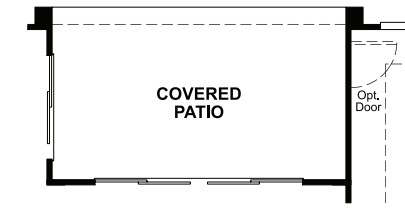
OPT. HOME MANAGEMENT



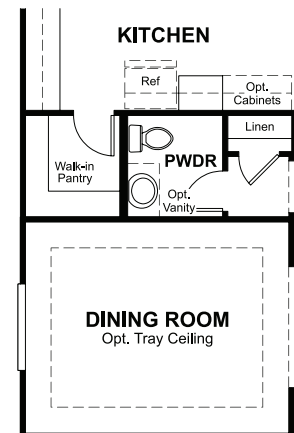
OPT. BEDROOM 4 W/ BATH 3



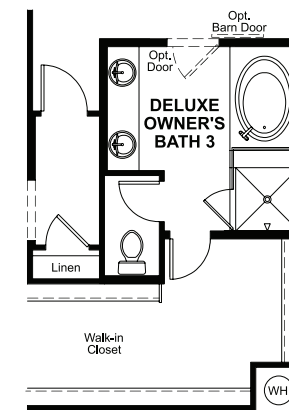
OPT. DELUXE OWNER'S BATH #2



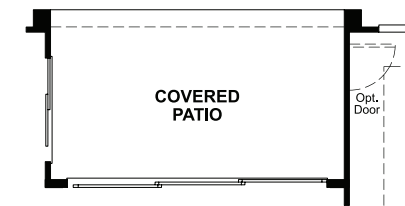
OPT. CENTER-MEET AT GREAT ROOM



OPT. DINING ROOM



OPT. DELUXE OWNER'S BATH #3



OPT. MULTI-SLIDE AT GREAT ROOM

THIS PLAN'S PROJECTED **HERS® INDEX = 59***
 Projected rating based on plans – field confirmation required

How does this floor plan rate?
 Take a look: **100** = standard new home™ **130** = typical resale home™
 The lower the number, the better! Refer to the RESNET® HERS index brochure or go to RESNET.us and HERSindex.com

What's a HERS® index? HERS stands for Home Energy Rating System, a system created by RESNET® to measure home energy efficiency. ^
 A projected HERS index or rating is a computer simulation performed prior to construction by a third-party HERS rater using RESNET-accredited rating software, rated feature and specification data derived from home plans, features and specifications, and other data selected or assumed by the rater. The projected HERS index is approximate and is subject to change without notice. Actual results will vary.