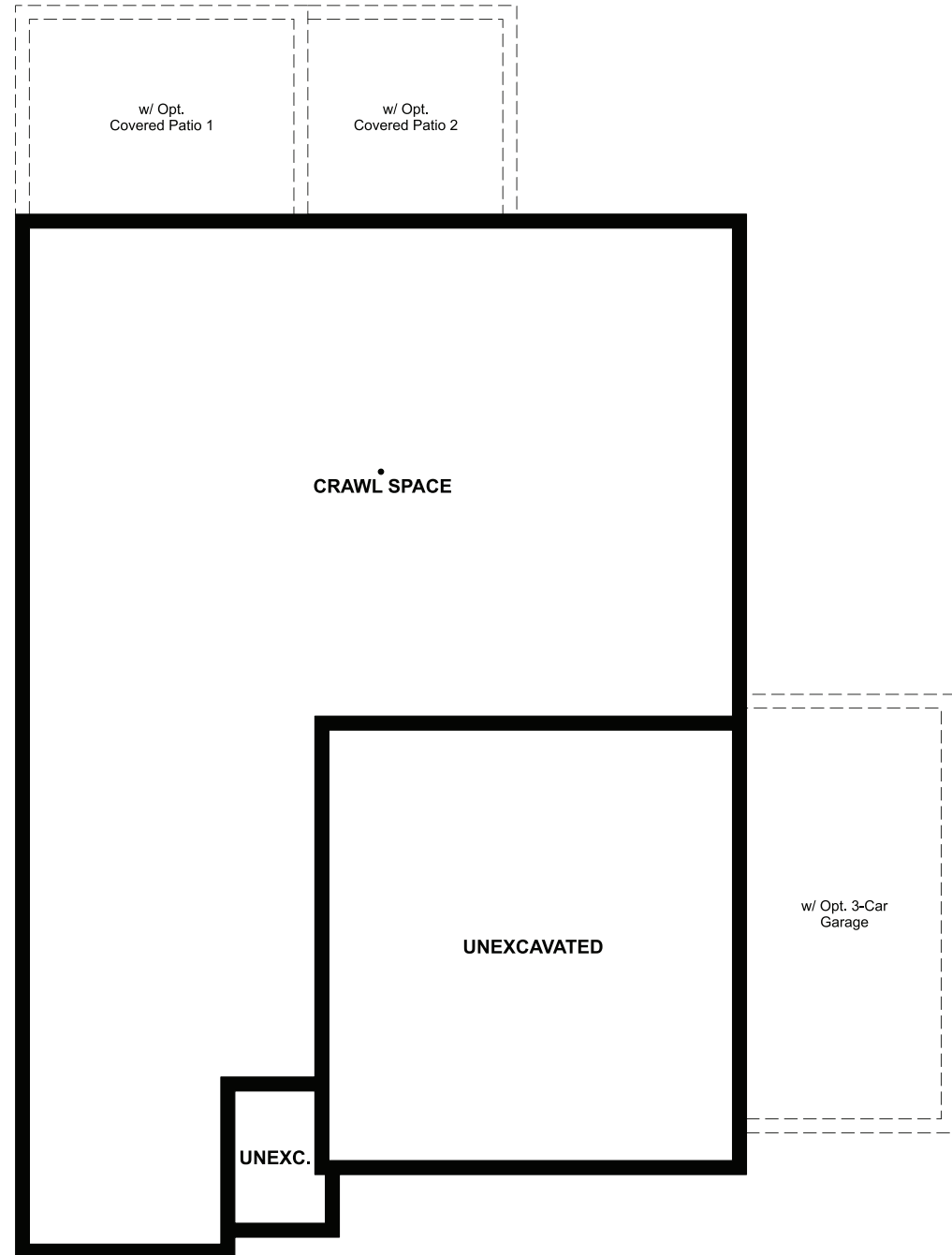


CRAWL SPACE



ELEVATION H

ABOUT THE JUNIPER

Just off the entry of the ranch-style Juniper plan, you'll find two generous bedrooms flanking a convenient bathroom. Further down the hall are a spacious great room, central laundry, and an inviting kitchen with built-in pantry and optional center island. You'll also appreciate a secluded owner's suite featuring a large walk-in closet and a private bath with optional double sinks, as well as a 2-car garage. Additional options include a relaxing covered patio and a 3-car garage.



ELEVATION F



ELEVATION G

COMMUNITY LOCATION:

Villa Bella | 2502 Torino Way | Pueblo, CO 81001 | 719.637.4751

DESIGN CENTER LOCATION:

HG2 by Richmond American™ | 8000 E. Belleview Avenue, Suite D-30 | Greenwood Village, CO 80111 | 888.402.4663



Floor plans and renderings are conceptual drawings and may vary from actual plans and homes as built. Options and features may not be available on all homes and are subject to change without notice. Actual homes may vary from photos and/or drawings which show upgraded landscaping and may not represent the lowest-priced homes in the community. Features may include optional upgrades and may not be available on all homes. Prices, specifications and availability are subject to change without notice. Square footage is approximate and subject to change without notice. ©2022 Richmond American Homes, Richmond American Homes of Colorado, Inc. 1/5/2022

MAIN FLOOR

MAIN-FLOOR OPTIONS

