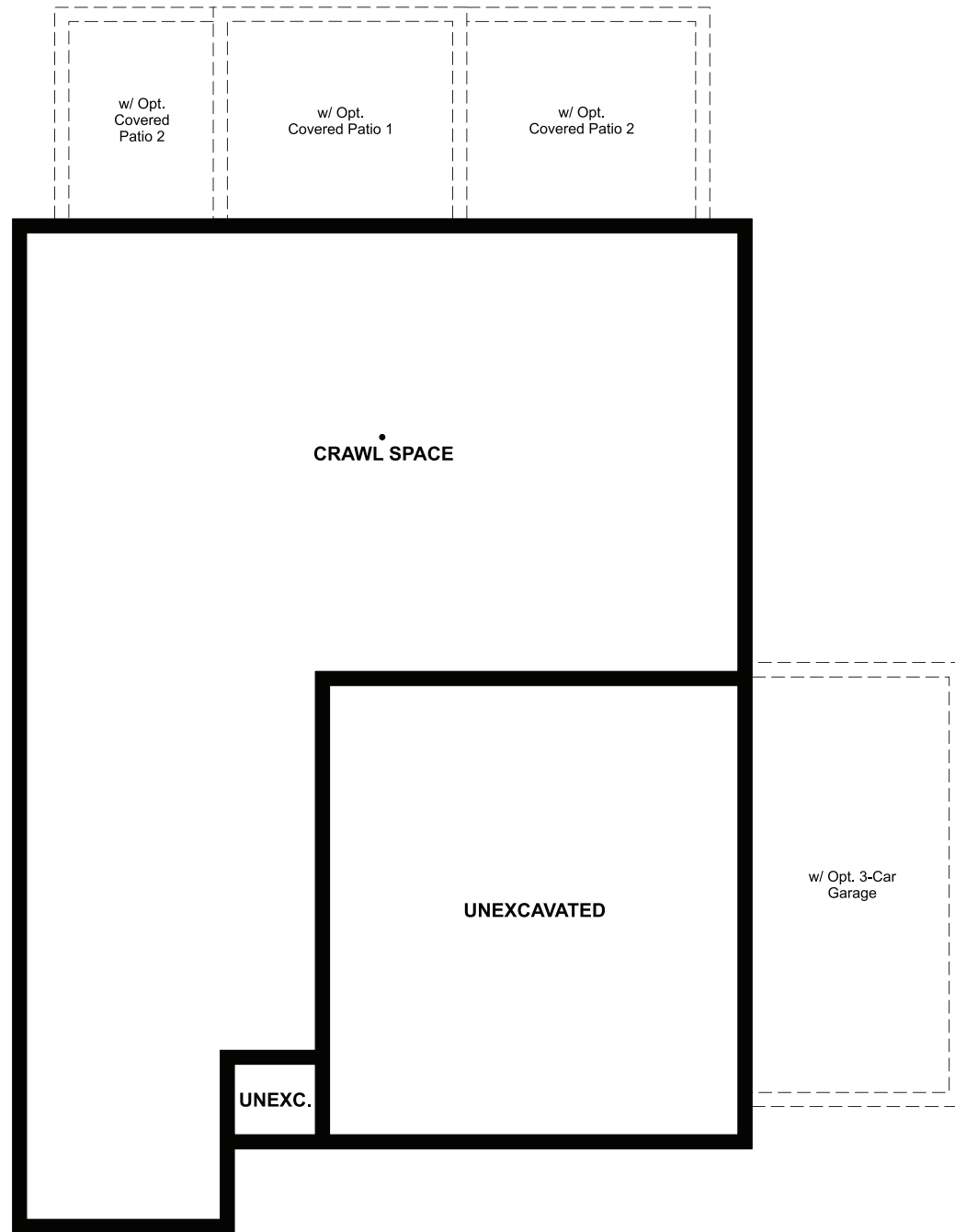


CRAWL SPACE



ELEVATION H

ABOUT THE CYPRESS

The ranch-style Cypress plan was designed for entertaining, featuring an open, inviting great room and a well-appointed kitchen with a roomy pantry. An elegant owner's suite showcases a private bath and a generous walk-in closet, and two additional bedrooms share a convenient bathroom. Central laundry and a 2-car garage complete the must-see residence. Personalize this plan with a kitchen island, a relaxing covered patio and a third garage bay.



ELEVATION F



ELEVATION G

COMMUNITY LOCATION:

Villa Bella | 2502 Torino Way | Pueblo, CO 81001 | 719.637.4751

DESIGN CENTER LOCATION:

HG2 by Richmond American™ | 8000 E. Belleview Avenue, Suite D-30 | Greenwood Village, CO 80111 | 888.402.4663



Floor plans and renderings are conceptual drawings and may vary from actual plans and homes as built. Options and features may not be available on all homes and are subject to change without notice. Actual homes may vary from photos and/or drawings which show upgraded landscaping and may not represent the lowest-priced homes in the community. Features may include optional upgrades and may not be available on all homes. Prices, specifications and availability are subject to change without notice. ©2022 Richmond American Homes, Richmond American Homes of Colorado, Inc. 1/5/2022

MAIN FLOOR

MAIN-FLOOR OPTIONS

