



ELEVATION C

## ABOUT THE ALEXANDRITE

The ranch-style Alexandrite plan was designed for entertaining, offering a generous great room with 10' center-meet patio doors and an open dining area. You'll also appreciate an inviting kitchen with a center island and walk-in pantry, plus three relaxing bedrooms, including an owner's suite with a private bath and immense walk-in closet. A private study, convenient laundry room and 2-car garage complete this beautiful Seasons™ Collection home.

### COMMUNITY LOCATION:

Seasons at The Farm | 697 Cardoso Dairy Drive | Galt, CA 95632 | **209.650.7023**

### DESIGN CENTER LOCATION:

Northern California Home Gallery™ | One Harbor Center, Suite 150 | Suisun City, CA 94585 | **707.416.2800**



Floor plans and renderings are conceptual drawings and may vary from actual plans and homes as built. Options and features may not be available on all homes and are subject to change without notice. Actual homes may vary from photos and/or drawings which show upgraded landscaping and may not represent the lowest-priced homes in the community. Features may include optional upgrades and may not be available on all homes. Prices, specifications and availability are subject to change without notice. Square footage is approximate and subject to change without notice. ©2022 Richmond American Homes, Richmond American Homes of Maryland, Inc., California Department of Real Estate – Real Estate Broker, Corporation License Number 01842595. 03/25/2022.

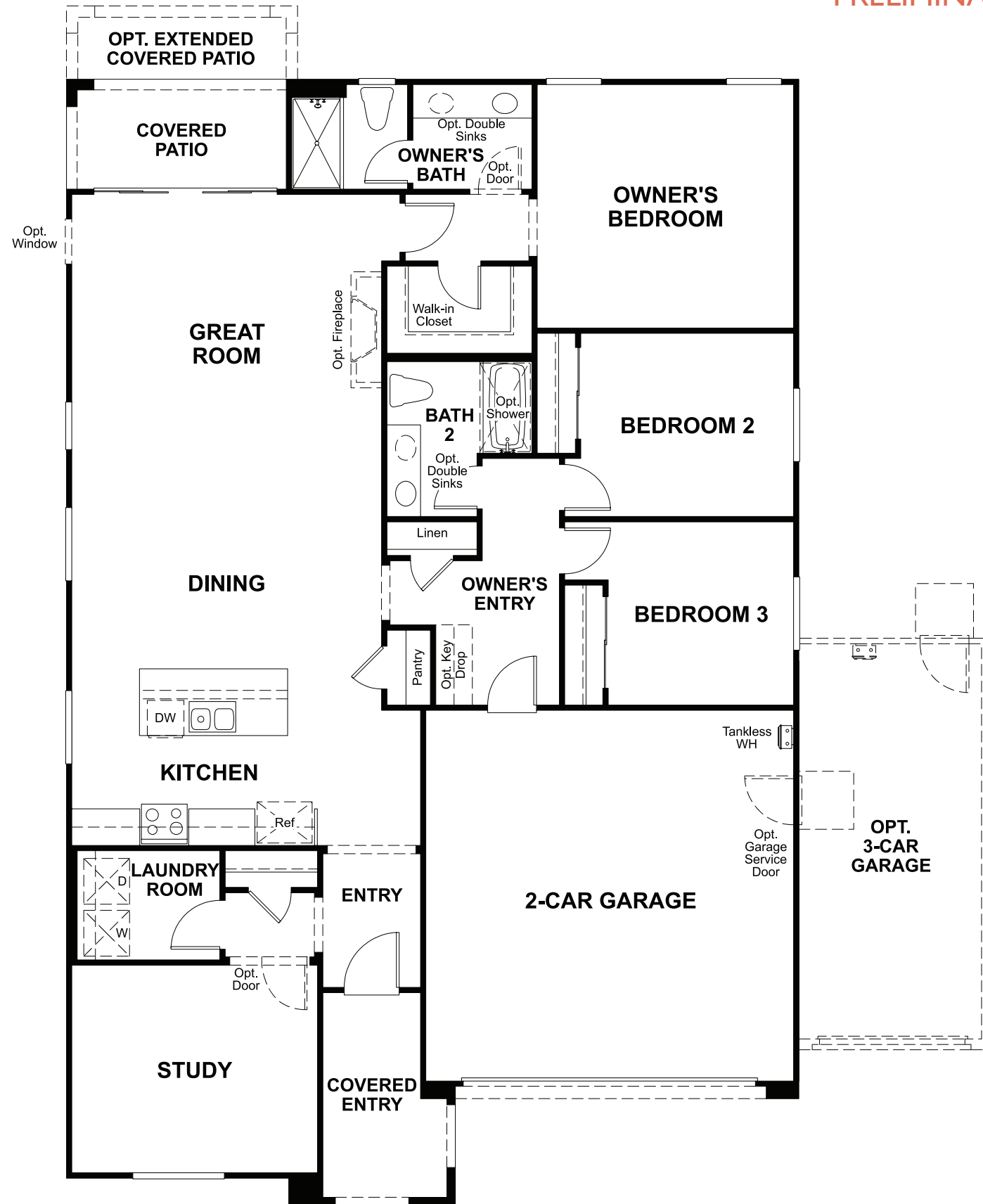


ELEVATION A

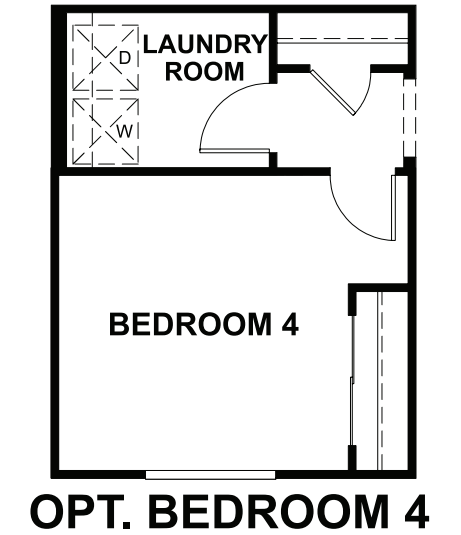
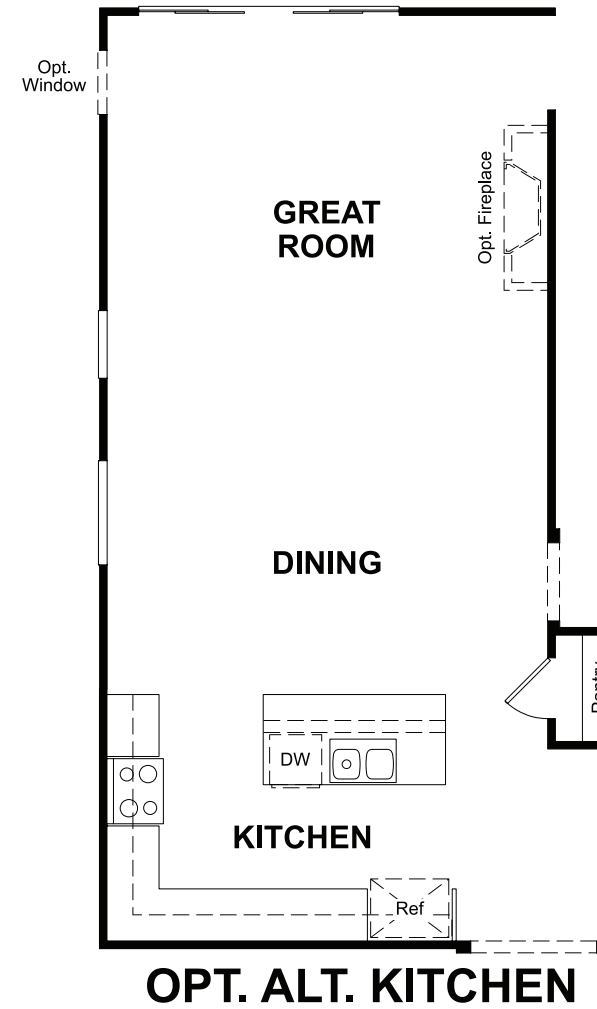


ELEVATION B

MAIN FLOOR  
PRELIMINARY



MAIN-FLOOR OPTIONS  
PRELIMINARY



OPT. BEDROOM 4