



ELEVATION D

ABOUT THE TOURMALINE

The two-story Tourmaline plan greets guests with a charming covered entry. On the main floor, you'll find a convenient powder room, a versatile flex room and a spacious great room that flows into an inviting kitchen featuring a center island and breakfast nook. Upstairs, enjoy a large loft, a laundry with optional cabinets, an elegant primary suite boasting an immense walk-in closet and attached bath, and three generous bedrooms with a shared bath. Personalize this plan with an alternate kitchen layout, extra bedrooms in lieu of the flex space and loft, and a wide covered patio!

COMMUNITY LOCATION:

Seasons at Montelena | 3908 Valance Drive | Rancho Cordova, CA 95742 | 916.472.7384



ELEVATION A



ELEVATION B



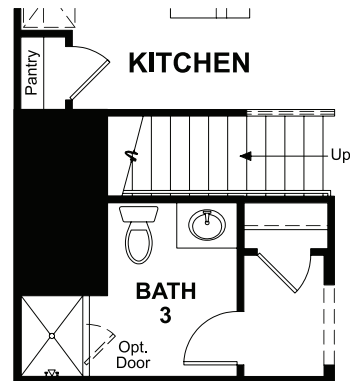
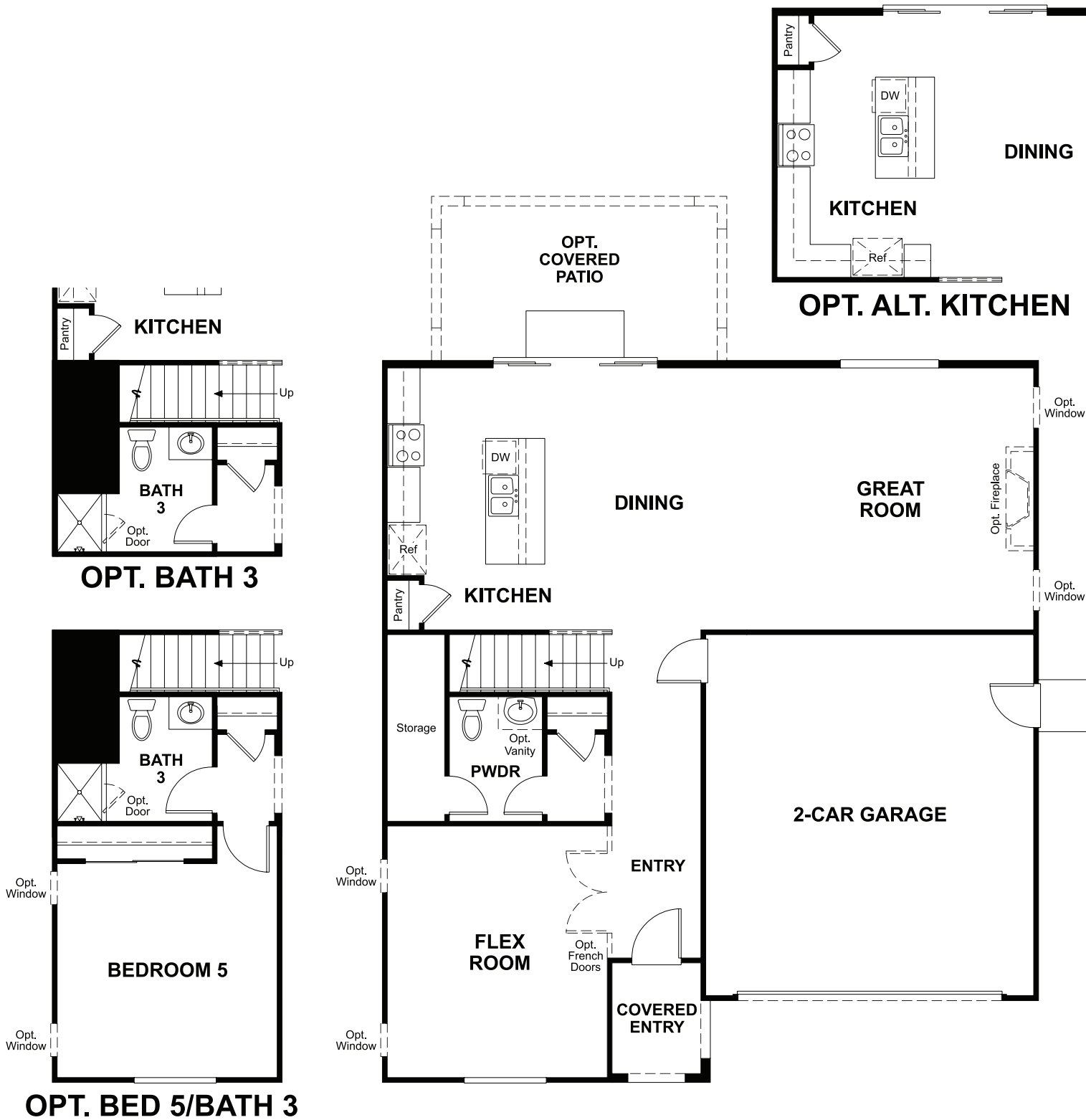
ELEVATION C



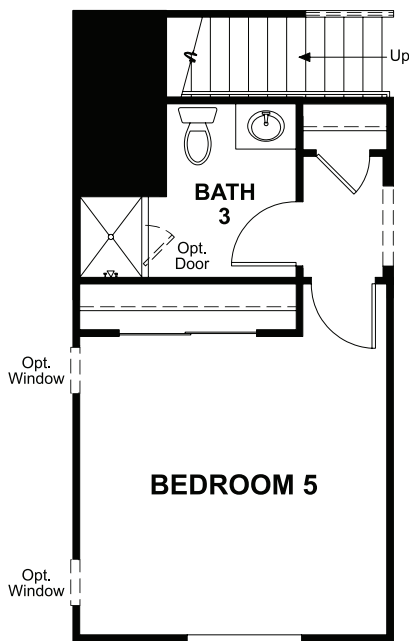
Floor plans and renderings are conceptual drawings and may vary from actual plans and homes as built. Options and features may not be available on all homes and are subject to change without notice. Actual homes may vary from photos and/or drawings which show upgraded landscaping and may not represent the lowest-priced homes in the community. Features may include optional upgrades and may not be available on all homes. Prices, specifications and availability are subject to change without notice. Square footage is approximate and subject to change without notice. ©2023 Richmond American Homes, Richmond American Homes of Maryland, Inc., California Department of Real Estate – Real Estate Broker, Corporation License Number 01842595. 10/18/2023

MAIN FLOOR
PRELIMINARY

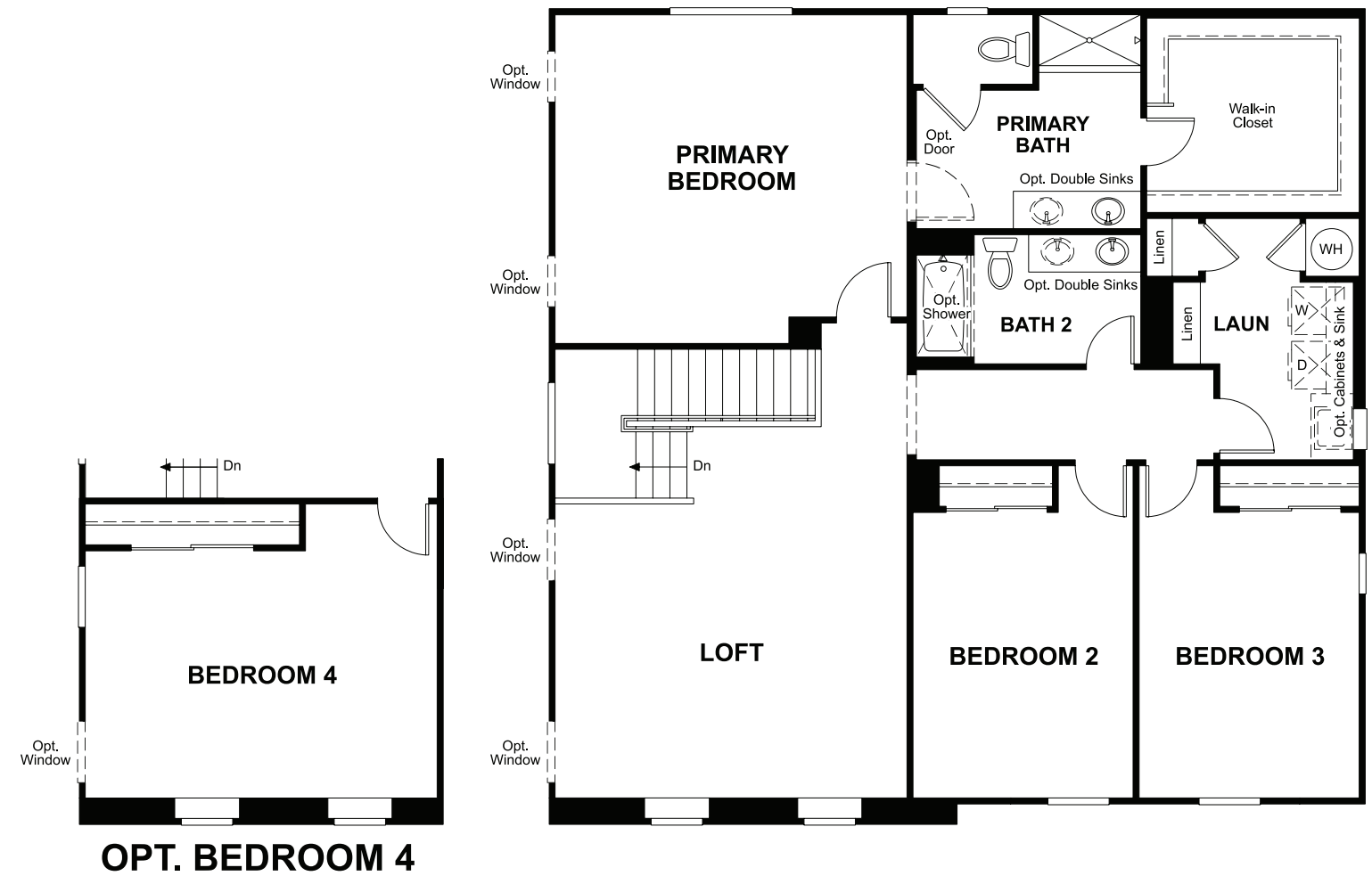
SECOND FLOOR
PRELIMINARY



OPT. BATH 3



OPT. BED 5/BATH 3



OPT. BEDROOM 4