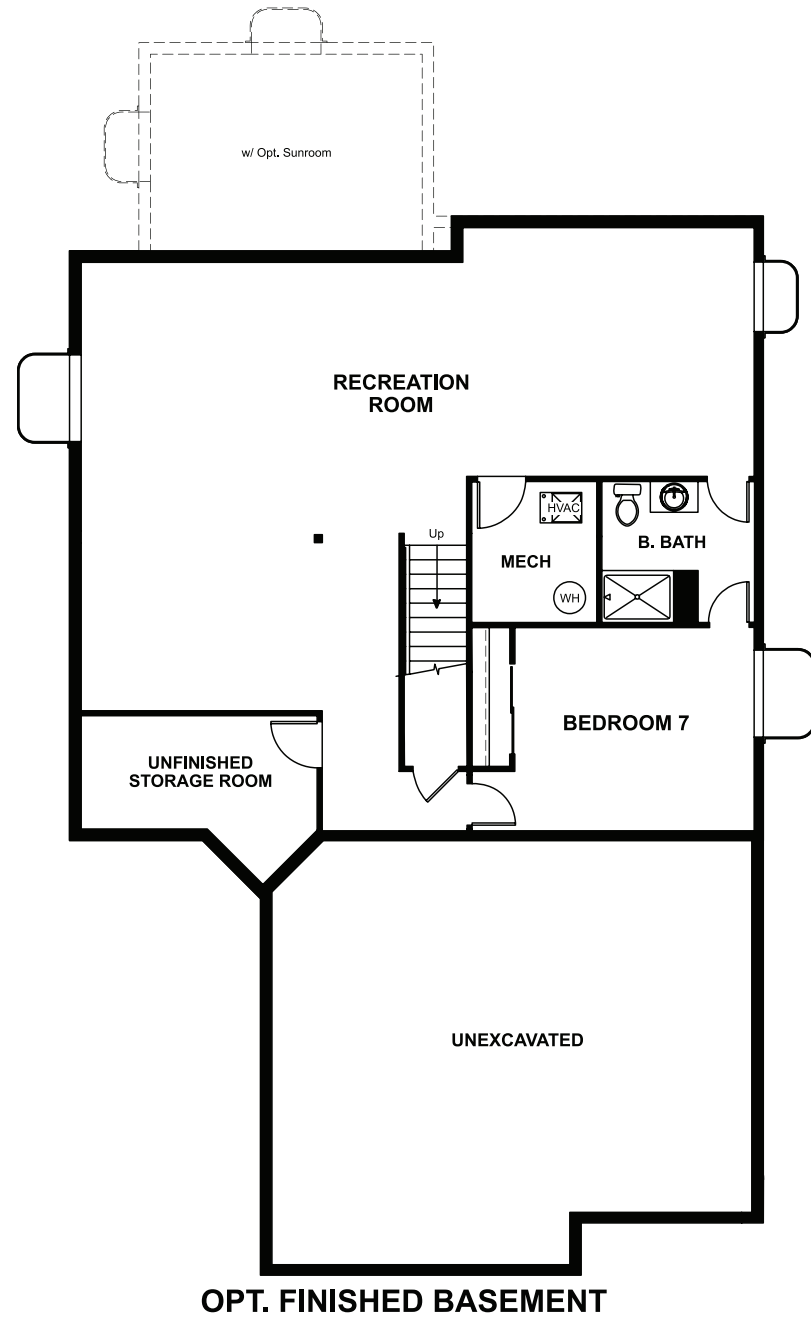


BASEMENT



ELEVATION D

ABOUT THE SETH

The popular Seth plan features a spacious great room that opens onto the nook and kitchen with a large island, an elegant dining room and a quiet study with a walk-in closet. Upstairs, you'll find a versatile loft, convenient laundry and four bedrooms—including an owner's suite with two walk-in closets and a private bath. Personalize your home with gourmet kitchen features, a sunroom or a finished basement.

COMMUNITY LOCATION:

Settlers Crossing | 18856 East 97th Avenue | Commerce City, CO 80022 | 303.850.5750

DESIGN CENTER LOCATION:

Denver Metro Home Gallery™ | 8000 E. Belleview Avenue, Suite C-12 | Greenwood Village, CO 80111 | 888.402.4663




ELEVATION A



ELEVATION B



ELEVATION C

 Floor plans and renderings are conceptual drawings and may vary from actual plans and homes as built. Options and features may not be available on all homes and are subject to change without notice. Actual homes may vary from photos and/or drawings which show upgraded landscaping and may not represent the lowest-priced homes in the community. Features may include optional upgrades and may not be available on all homes. Prices, specifications and availability are subject to change without notice. Square footage is approximate and subject to change without notice. ©2022 Richmond American Homes, Richmond American Homes of Colorado, Inc. 5/31/2022

MAIN FLOOR

SECOND FLOOR

