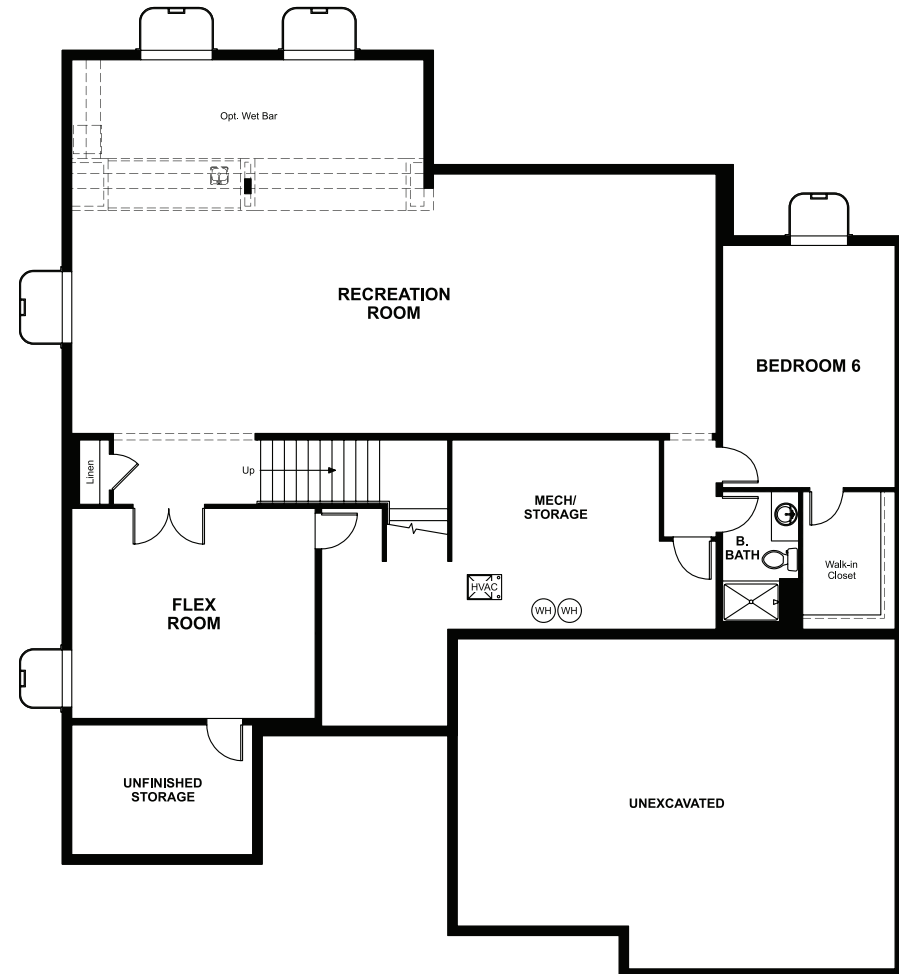


BASEMENT



OPT. FINISHED BASEMENT 4



ELEVATION E

ABOUT THE HARMON

The Harmon plan has a wealth of exciting features: formal living and dining rooms, a butler's pantry and a gourmet kitchen, a roomy walk-in pantry and a tech center; a family room, study, mudroom and nook and that's just the main floor! Upstairs, there's an owner's suite with retreat, walk-in closet and deluxe bath.

COMMUNITY LOCATION:

Vista Pines at Crystal Valley | 1821 Gold Ridge Point | Castle Rock, CO 80104 | 720.758.8905

DESIGN CENTER LOCATION:

Denver Metro Home Gallery™ | 8000 E. Belleview Avenue, Suite C-12 | Greenwood Village, CO 80111 | 888.402.4663




ELEVATION A



ELEVATION B



ELEVATION D

 Floor plans and renderings are conceptual drawings and may vary from actual plans and homes as built. Options and features may not be available on all homes and are subject to change without notice. Actual homes may vary from photos and/or drawings which show upgraded landscaping and may not represent the lowest-priced homes in the community. Features may include optional upgrades and may not be available on all homes. Prices, specifications and availability are subject to change without notice. Square footage is approximate and subject to change without notice. ©2023 Richmond American Homes, Richmond American Homes of Colorado, Inc. 03/23/23

MAIN FLOOR

SECOND FLOOR

