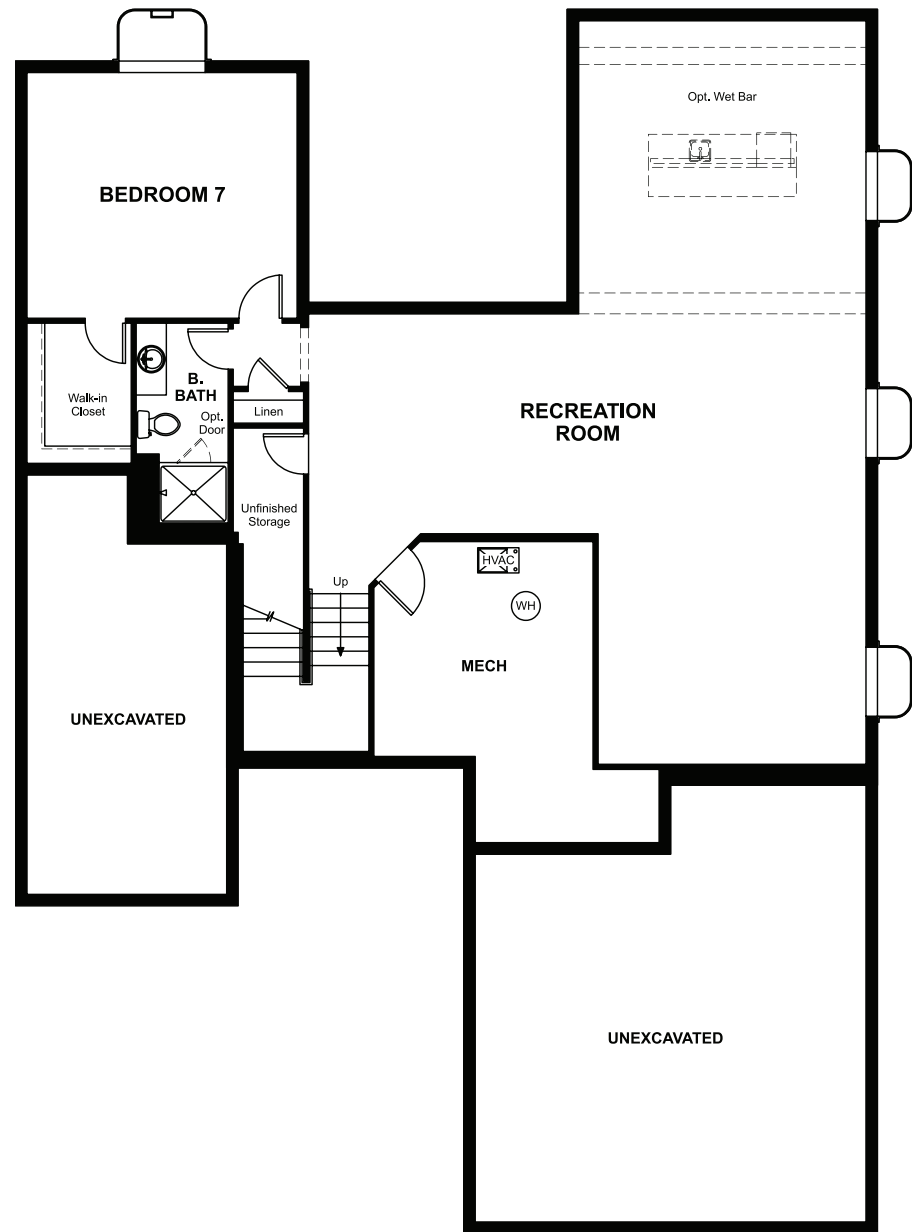


BASEMENT



OPT. FINISHED BASEMENT 3



ELEVATION H

ABOUT THE DALEY

The main floor of the Daley plan offers an open dining room and an expansive great room that flows into a gourmet kitchen with center island and walk-in pantry. You'll also appreciate a convenient bedroom with full bath, a quiet study and a relaxing covered patio. Upstairs features a large loft and four inviting bedrooms, including an elegant owner's suite with deluxe bath. Other personalization options include an extra bedroom in lieu of the loft and a finished basement.



ELEVATION E



ELEVATION F

COMMUNITY LOCATION:

Vista Pines at Crystal Valley | 1821 Gold Ridge Point | Castle Rock, CO 80104 | 303.850.5757

DESIGN CENTER LOCATION:

Denver Metro Home Gallery™ | 8000 E. Belleview Avenue, Suite C-12 | Greenwood Village, CO 80111 | 888.402.4663



Floor plans and renderings are conceptual drawings and may vary from actual plans and homes as built. Options and features may not be available on all homes and are subject to change without notice. Actual homes may vary from photos and/or drawings which show upgraded landscaping and may not represent the lowest-priced homes in the community. Features may include optional upgrades and may not be available on all homes. Prices, specifications and availability are subject to change without notice. Square footage is approximate and subject to change without notice. ©2022 Richmond American Homes, Richmond American Homes of Colorado, Inc. 06/07/22

MAIN FLOOR

SECOND FLOOR

