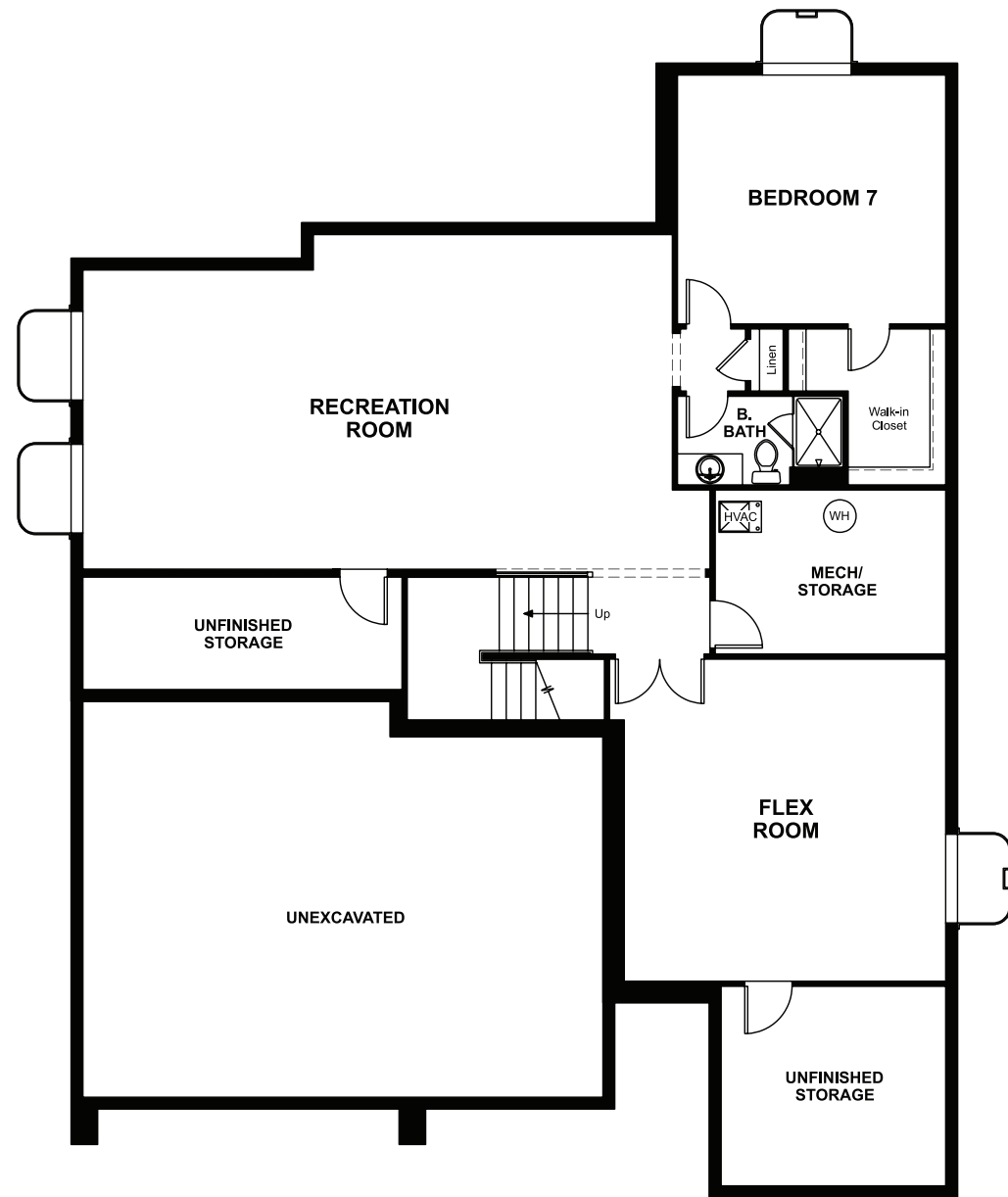


BASEMENT




OPT. FINISHED BASEMENT 4

COMMUNITY LOCATION:

Vista Pines at Crystal Valley | 1821 Gold Ridge Point | Castle Rock, CO 80104 | 303.850.5757

DESIGN CENTER LOCATION:

Denver Metro Home Gallery™ | 8000 E. Belleview Avenue, Suite C-12 | Greenwood Village, CO 80111 | 888.402.4663

 Floor plans and renderings are conceptual drawings and may vary from actual plans and homes as built. Options and features may not be available on all homes and are subject to change without notice. Actual homes may vary from photos and/or drawings which show upgraded landscaping and may not represent the lowest-priced homes in the community. Features may include optional upgrades and may not be available on all homes. Prices, specifications and availability are subject to change without notice. ©2022 Richmond American Homes, Richmond American Homes of Colorado, Inc. 06/07/22



ELEVATION H

ABOUT THE DAYTON

The main floor of the Dayton plan is an entertainer's dream, with a formal dining room, an expansive great room and a well-appointed kitchen with an immense center island and breakfast nook. You'll also appreciate the quiet study, convenient bedroom and full bath. The upper level includes a roomy loft and a relaxing owner's suite with a deluxe bath. Personalize this plan with options including a professional kitchen, owner's retreat and covered patio.



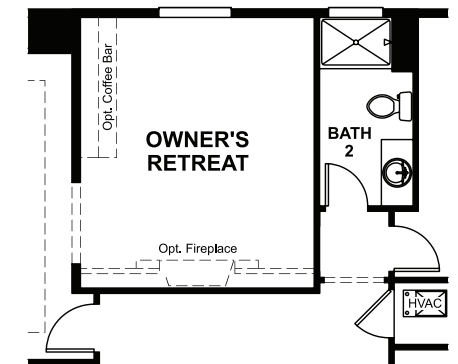
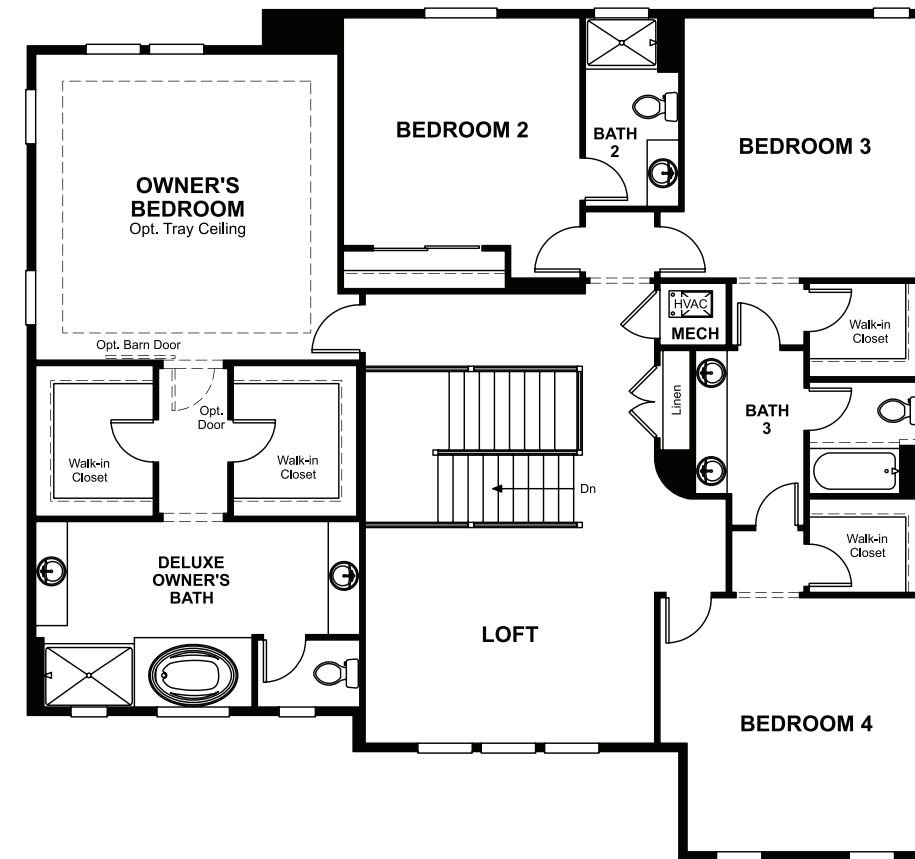
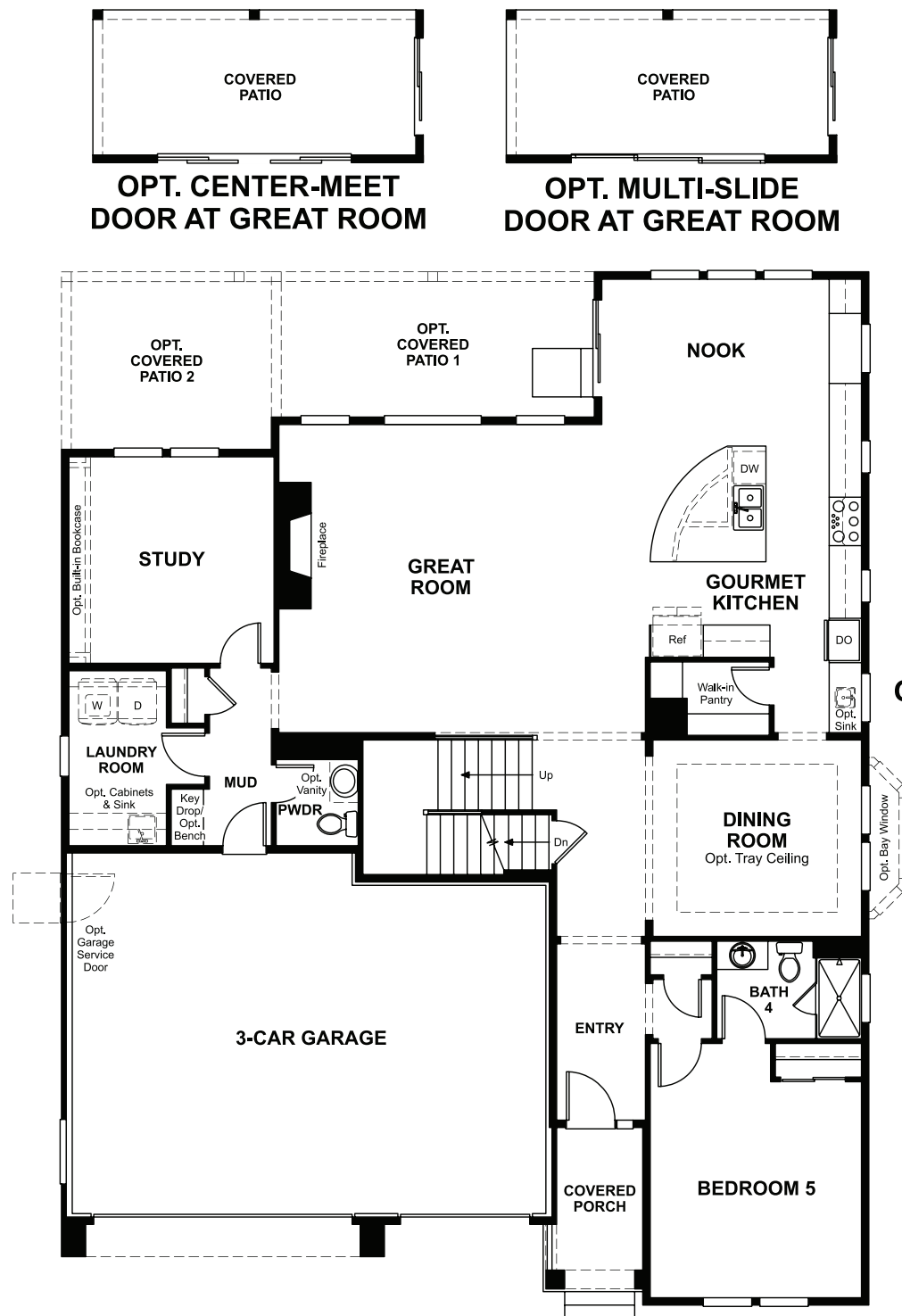
ELEVATION E



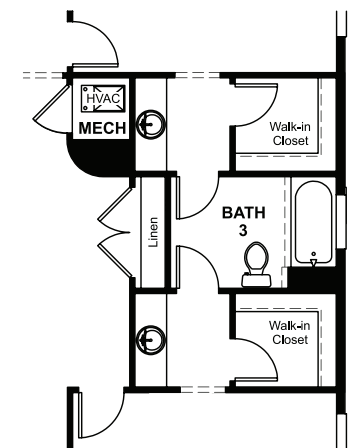
ELEVATION F

MAIN FLOOR

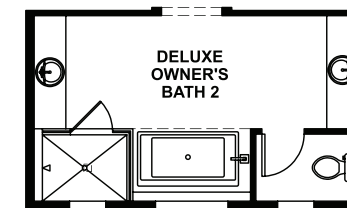
SECOND FLOOR



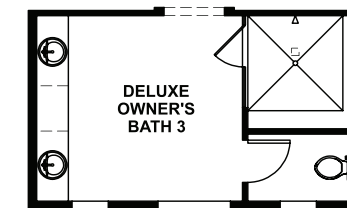
OPT. OWNER'S RETREAT



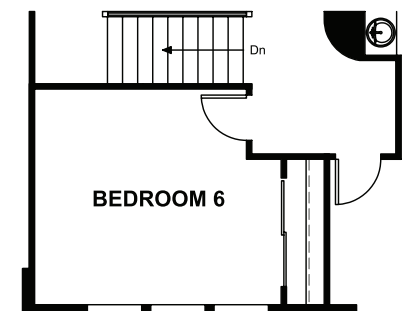
ALT. BATH 3



OPT. DELUXE OWNER'S BATH 2



OPT. DELUXE OWNER'S BATH 3



OPT. BEDROOM 6