

ADELE



Elevation A

Approx. square feet: 2,450
Stories: 1
Bedrooms: 3 - 4
Garage: 2- to 3-car
Plan Number: F258

The ranch-style Adele invites visitors through a sweeping entryway flanked by study and dining rooms and into the airy great room area, which faces the breakfast nook and open kitchen. Relax in the master suite with walk-in closet. Completing this elegant home are options like a covered patio, gourmet kitchen and extra bedroom.

Available elevations:



Elevation A



Elevation B



Elevation C - Shown w/ optional stone



Elevation D



Elevation E



Elevation F



HOME GALLERY

762 South Northlake Boulevard, #1004
 Altamonte Springs, FL 32701
 321-418-3095



HOME GALLERY

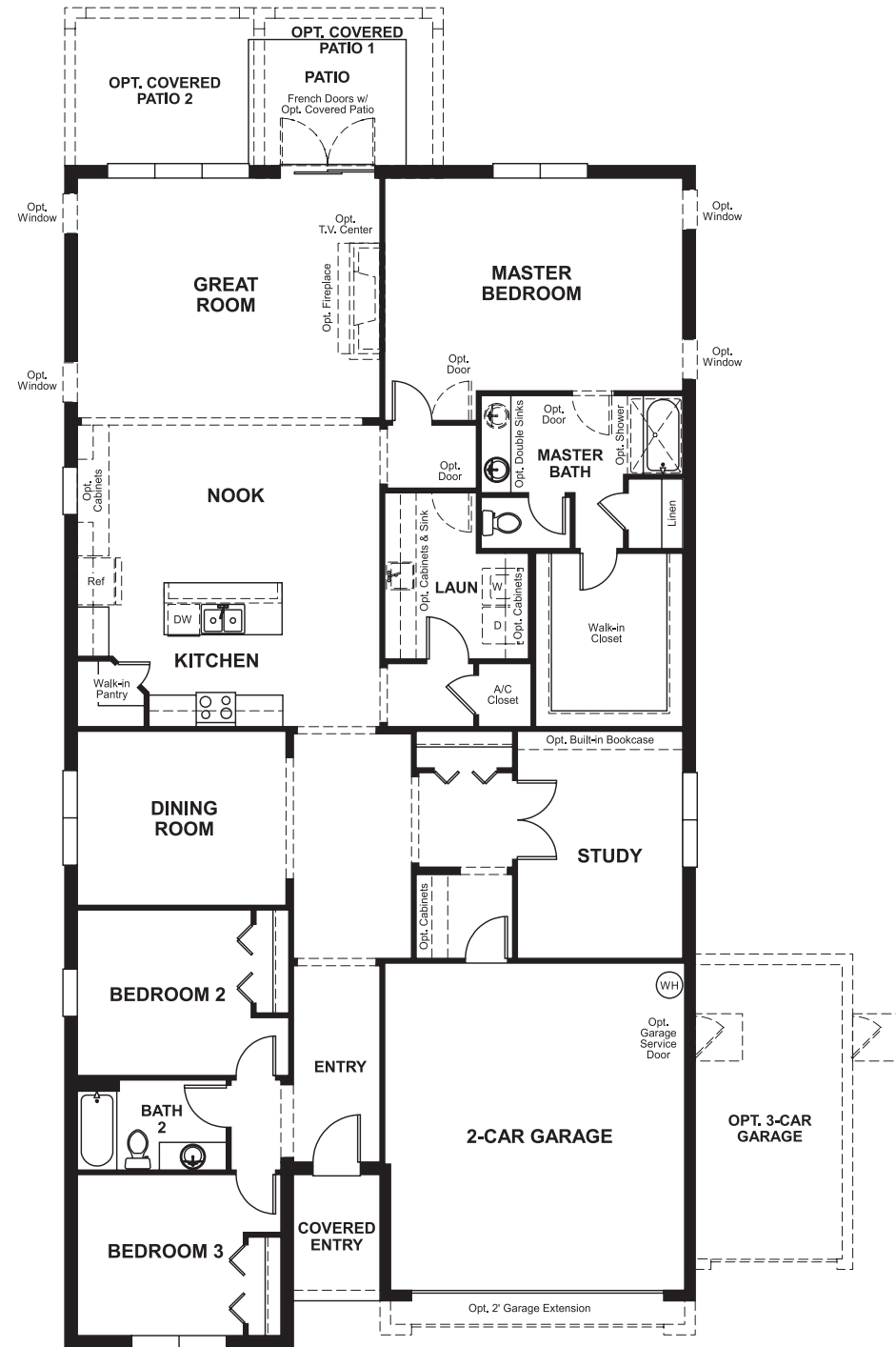
762 South Northlake Boulevard, #1004
 Altamonte Springs, FL 32701
 321-418-3095

ADELE

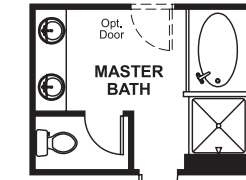
Approx. square feet: 2,450
Stories: 1
Bedrooms: 3 - 4

Garage: 2- to 3-car
Plan Number: F258

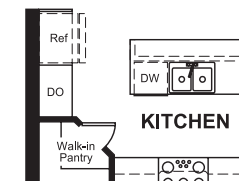
Floor Plan
Main Floor



Floor Plan
Main Floor Options



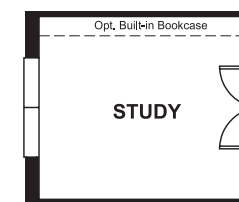
OPT. DELUXE MASTER BATH



OPT. GOURMET KITCHEN



OPT. BEDROOM 4



OPT. STUDY



OPT. BEDROOM 4/BATH 3

THIS PLAN'S PROJECTED HERS® INDEX = 69*
Projected Rating Based on Plans – Field Confirmation Required

How does this floor plan rate?

Take a look: **100** = Standard new home* **130** = Typical resale home**
The lower the number, the better! Refer to the RESNET® HERS index brochure or go to www.RESNET.us for details.

What's a HERS® Index? HERS stands for Home Energy Rating System, a system created by RESNET® to measure home energy efficiency.†

A Projected HERS index or rating is a computer simulation performed prior to construction by a third-party HERS rater using RESNET-accredited rating software, rated feature and specification data derived from home plans, features and specifications, and other data selected or assumed by the rater. The projected HERS index is approximate and is subject to change without notice. Actual results will vary.

*This information is presented for education purposes only. The HERS index for a confirmed rating will be determined by a third-party HERS rater based on data gathered from on-site observations and, if required, testing of rated features for a home as featured, optioned, located, oriented and/or built.

+Standard new home is based on the RESNET® Reference Home definition with a HERS® index of 100 (based on the 2006 International Energy Conservation Code).

**Typical resale home is based on the U.S. Department of Energy definition with a HERS® index of 130.

†RESNET® has developed the HERS® index to indicate the comparative efficiencies of homes. It is no guarantee that energy efficiencies will be achieved.