

Treaty Oaks
ADELE



Elevation C Shown with optional stone

Approx. square feet: 2,450
Stories: 1
Bedrooms: 3 - 4
Garage: 2- to 3-car
Plan Number: J29A

The Adele is a distinctive ranch plan with an impressive entry, a large master suite with a walk-in closet, spacious great room and a large kitchen with a center island.

Available elevations:



Elevation C Shown w/opt. stone



Elevation D



Elevation E



Elevation F



Elevation K



Elevation L



Elevation M

COMMUNITY LOCATION
524 Tumbled Stone Way
St. Augustine, FL 32086
904-429-7876

HOME GALLERY
1560 Wells Road, Building A
Orange Park, FL 32073
800-221-3014



COMMUNITY LOCATION
524 Tumbled Stone Way
St. Augustine, FL 32086
904-429-7876

HOME GALLERY
1560 Wells Road, Building A
Orange Park, FL 32073
800-221-3014

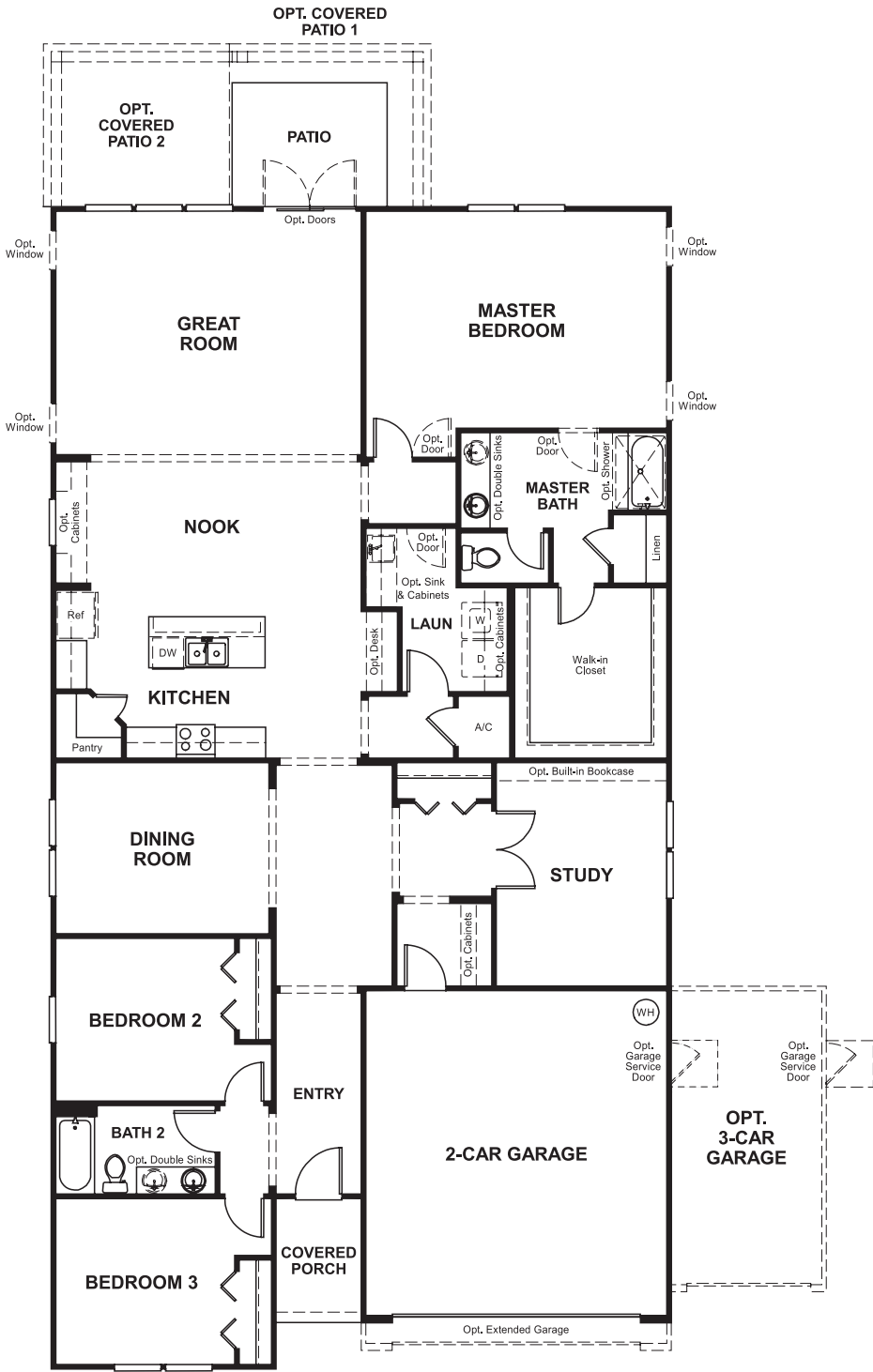


Treaty Oaks
ADELE

Approx. square feet: 2,450
Stories: 1
Bedrooms: 3 - 4

Garage: 2- to 3-car
Plan Number: J258

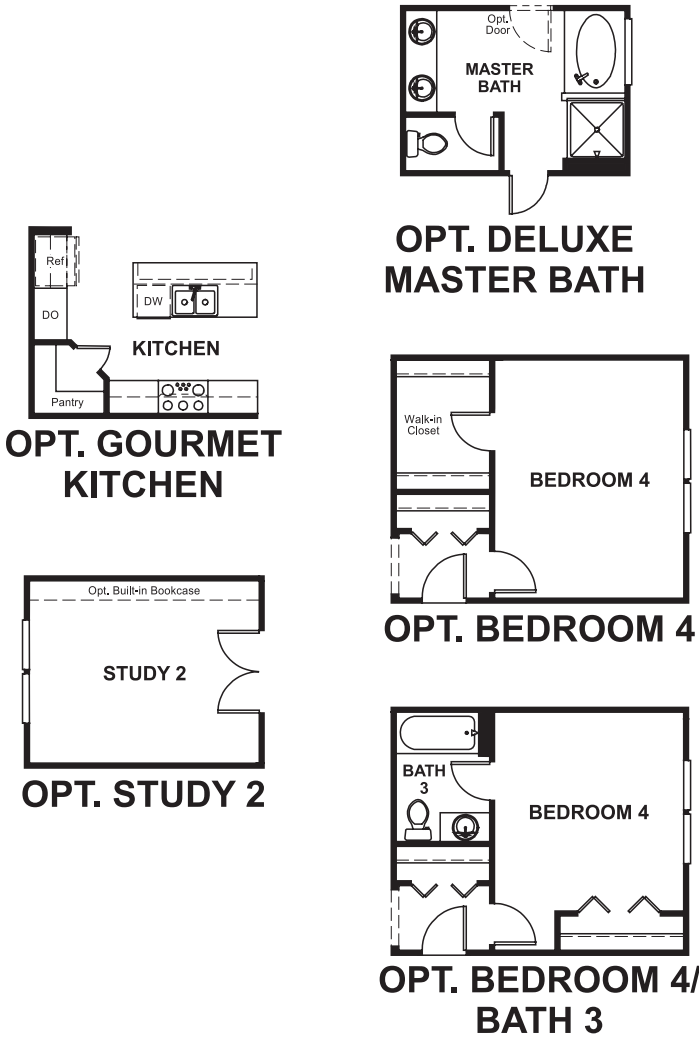
Floor Plan
Main Floor



**THIS PLAN'S PROJECTED
HERS® INDEX = 66 ***
Projected Rating Based on Plans – Field Confirmation Required

How does this floor plan rate?
Take a look: **100** = Standard new home* **130** = Typical resale home**
The lower the number, the better! Refer to the RESNET® HERS index brochure or go to www.RESNET.us for details.

Floor Plan
Main Floor Options



What's a HERS® Index? HERS stands for Home Energy Rating System, a system created by RESNET® to measure home energy efficiency.^
A Projected HERS index or rating is a computer simulation performed prior to construction by a third-party HERS rater using RESNET-accredited rating software, rated feature and specification data derived from home plans, features and specifications, and other data selected or assumed by the rater. The projected HERS index is approximate and is subject to change without notice. Actual results will vary.

*This information is presented for education purposes only. The HERS index for a confirmed rating will be determined by a third-party HERS rater based on data gathered from on-site observations and, if required, testing of rated features for a home as featured, optioned, located, oriented and/or built.
+Standard new home is based on the RESNET® Reference Home definition with a HERS® index of 100 (based on the 2006 International Energy Conservation Code).
++Typical resale home is based on the U.S. Department of Energy definition with a HERS® index of 130.

^RESNET® has developed the HERS® index to indicate the comparative efficiencies of homes. It is no guarantee that energy efficiencies will be achieved.