

Treaty Oaks  
**ALAN**



**Elevation C Shown with optional stone**

**Approx. square feet:** 2,000  
**Stories:** 1  
**Bedrooms:** 3 - 4  
**Garage:** 2- to 3-car  
**Plan Number:** J29A

The Alan is a ranch home with the perfect blend of style and livability. The great room is ideal for family get-togethers and is adjacent to the kitchen and eat-in breakfast nook. Owners will appreciate a private master suite with large walk-in closet.

**Available elevations:**



**Elevation C Shown w/opt. stone**



**Elevation D**



**Elevation E**



**Elevation F**



**Elevation K**



**Elevation L**



**Elevation M**

**COMMUNITY LOCATION**

524 Tumbled Stone Way  
 St. Augustine, FL 32086  
 904-429-7876

**HOME GALLERY**

1560 Wells Road, Building A  
 Orange Park, FL 32073  
 800-221-3014



**COMMUNITY LOCATION**

524 Tumbled Stone Way  
 St. Augustine, FL 32086  
 904-429-7876

**HOME GALLERY**

1560 Wells Road, Building A  
 Orange Park, FL 32073  
 800-221-3014

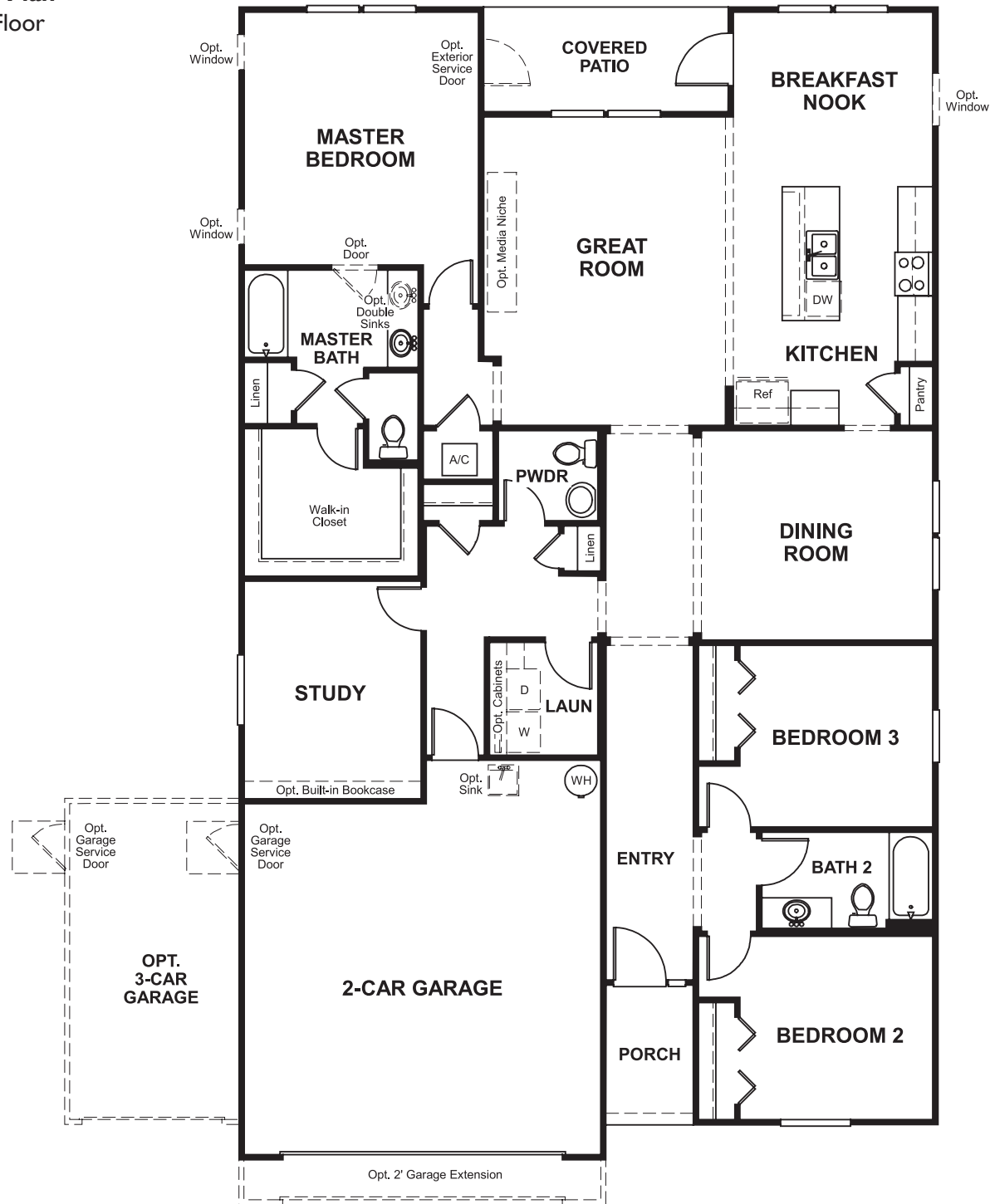


Treaty Oaks  
**ALAN**

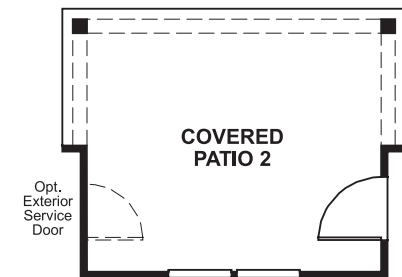
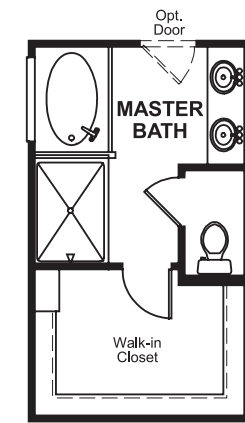
Approx. square feet: 2,000  
Stories: 1  
Bedrooms: 3 - 4

Garage: 2- to 3-car  
Plan Number: J202

**Floor Plan**  
Main Floor

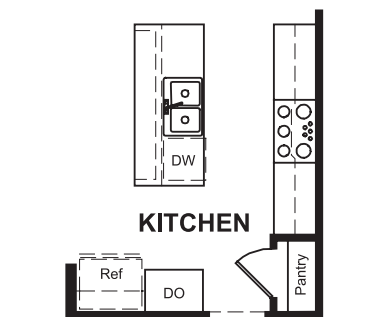
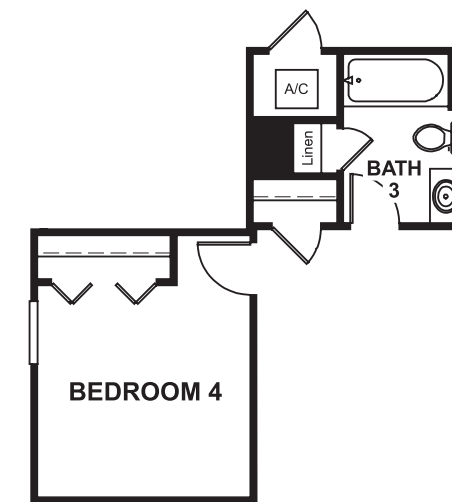


**Floor Plan**  
Main Floor Options



**OPT. DELUXE  
MASTER BATH**

**OPT. COVERED  
PATIO 2**



**OPT. BEDROOM 4/  
BATH 3**

**OPT. GOURMET  
KITCHEN**

**THIS PLAN'S PROJECTED  
HERS® INDEX = 66\***  
Projected Rating Based on Plans – Field Confirmation Required

**How does this floor plan rate?**  
Take a look: 100 = Standard new home\* 130 = Typical resale home\*\*  
The lower the number, the better! Refer to the RESNET® HERS index brochure or go to [www.RESNET.us](http://www.RESNET.us) for details.

**What's a HERS® Index?** HERS stands for Home Energy Rating System, a system created by RESNET® to measure home energy efficiency.<sup>^</sup>  
A Projected HERS index or rating is a computer simulation performed prior to construction by a third-party HERS rater using RESNET-accredited rating software, rated feature and specification data derived from home plans, features and specifications, and other data selected or assumed by the rater. The projected HERS index is approximate and is subject to change without notice. Actual results will vary.

\*This information is presented for education purposes only. The HERS index for a confirmed rating will be determined by a third-party HERS rater based on data gathered from on-site observations and, if required, testing of rated features for a home as featured, optioned, located, oriented and/or built.  
+Standard new home is based on the RESNET® Reference Home definition with a HERS® index of 100 (based on the 2006 International Energy Conservation Code).  
\*\*Typical resale home is based on the U.S. Department of Energy definition with a HERS® index of 130.

<sup>^</sup>RESNET® has developed the HERS® index to indicate the comparative efficiencies of homes. It is no guarantee that energy efficiencies will be achieved.