

Cobblestone Ranch  
**ALCOTT**

**Approx. square feet:** 1,900  
**Stories:** 1  
**Bedrooms:** 3 - 5

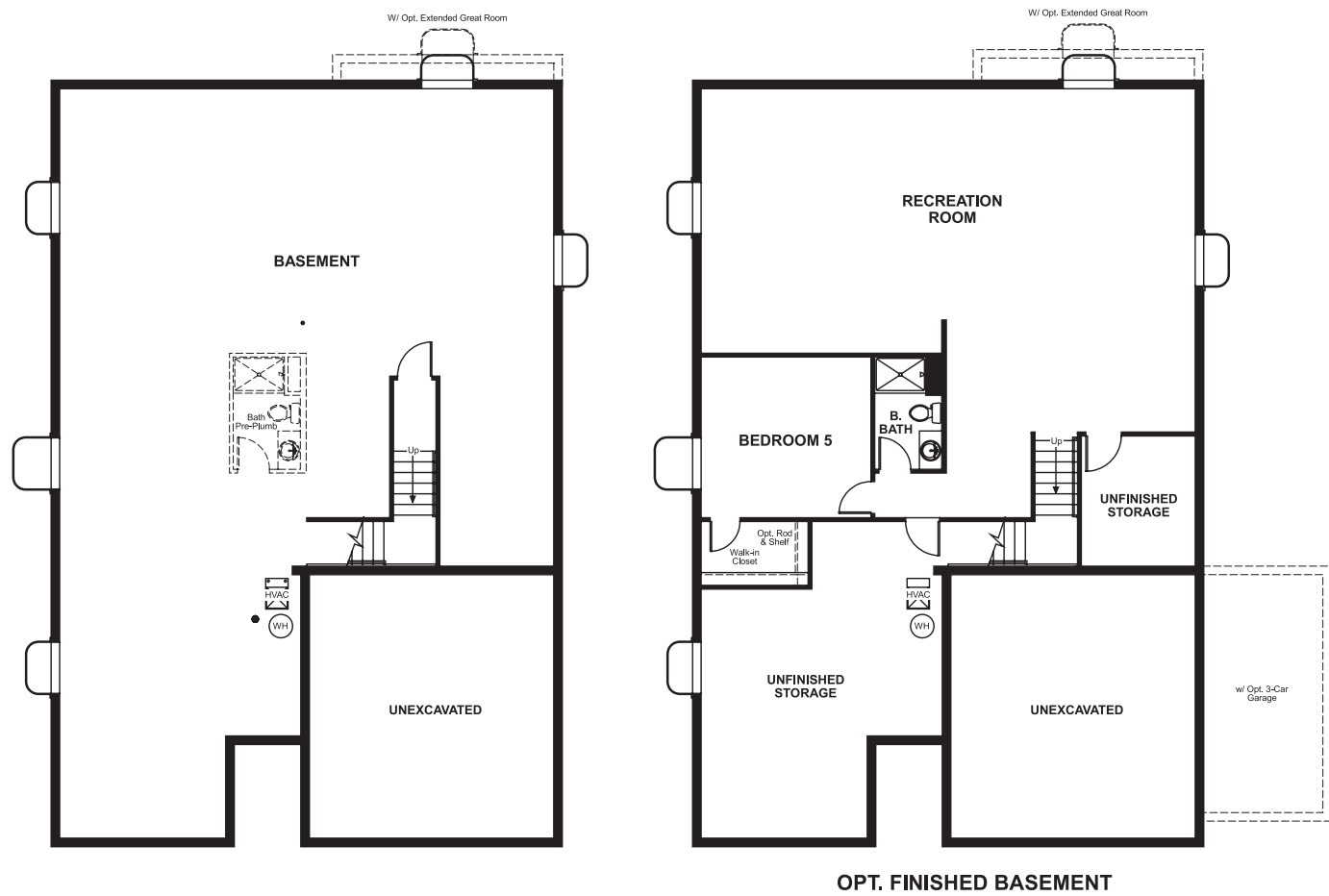
**Garage:** 2 to 3-car  
**Plan Number:** D193

Cobblestone Ranch  
**ALCOTT**

**Approx. square feet:** 1,900  
**Stories:** 1  
**Bedrooms:** 3 - 5  
**Garage:** 2 to 3-car  
**Plan Number:** D193

The Alcott is a ranch home with plenty of options for personalization. The flex space adjacent to the kitchen can be optioned as a fourth bedroom. A deluxe master bath is available, offering a separate tub and shower. Other features include a spacious walk-in kitchen pantry and an optional finished basement.

**Floor Plan**  
Basement



**Elevation G**

**Available elevations:**



**Elevation G**



**Elevation H**



**Elevation J**



**Elevation K**

**COMMUNITY LOCATION**  
7458 Grady Circle  
Castle Rock, CO 80108  
720-851-5828

**HOME GALLERY**  
800 East Bellview Avenue, Suite C-12  
Greenwood Village, CO 80111  
888-402-4663



**COMMUNITY LOCATION**  
7458 Grady Circle  
Castle Rock, CO 80108  
720-851-5828

**HOME GALLERY**  
800 East Bellview Avenue, Suite C-12  
Greenwood Village, CO 80111  
888-402-4663

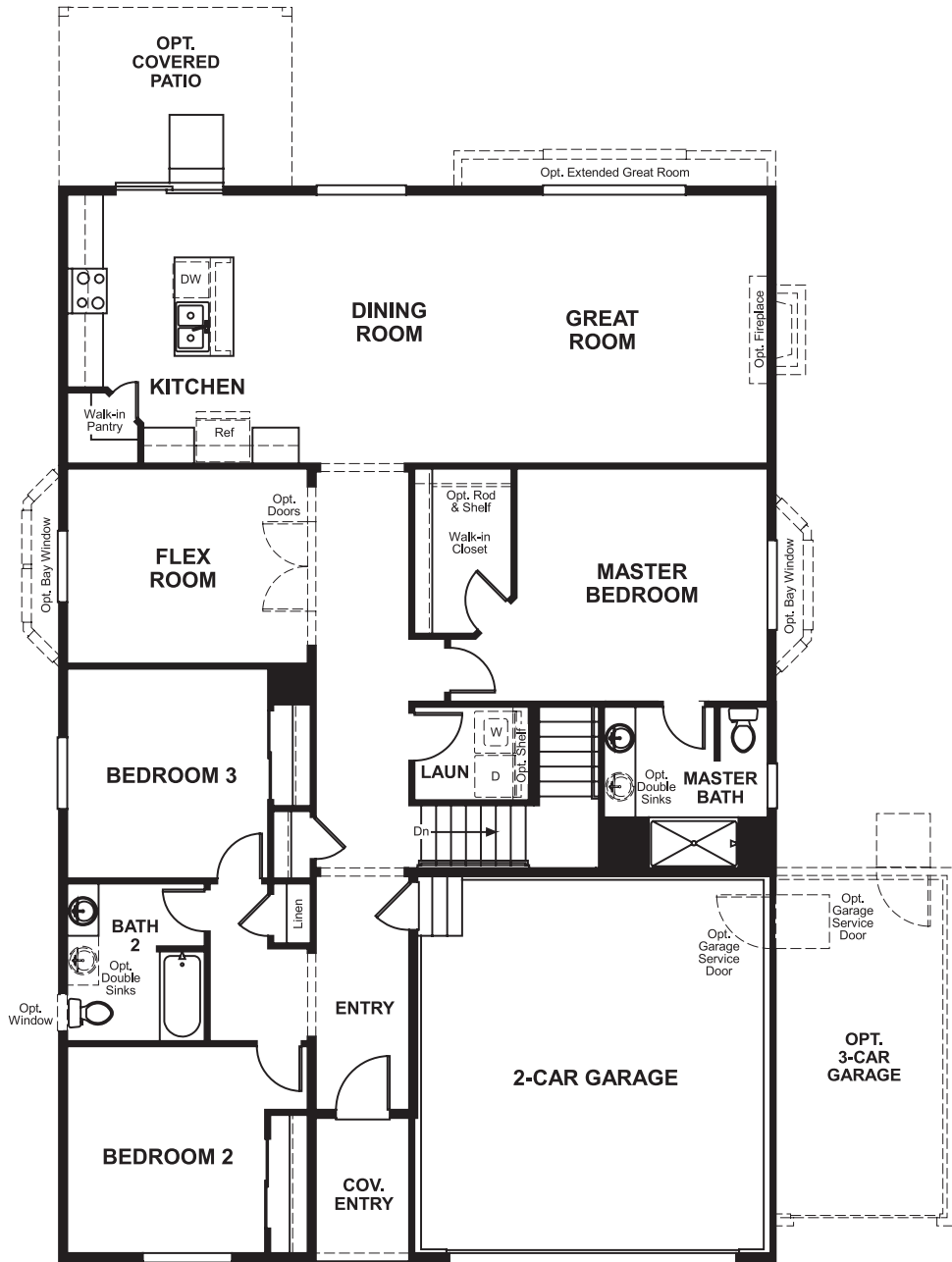


Cobblestone Ranch  
**ALCOTT**

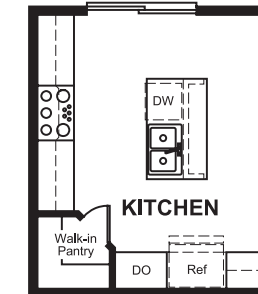
**Approx. square feet:** 1,900  
**Stories:** 1  
**Bedrooms:** 3 - 5

**Garage:** 2 to 3-car  
**Plan Number:** D193

**Floor Plan**  
Main Floor



**Floor Plan**  
Main Floor Options



**OPT. GOURMET KITCHEN**



**OPT. BEDROOM 4**



**OPT. DELUXE MASTER BATH**

**THIS PLAN'S PROJECTED  
HERS® INDEX = 60\***  
Projected Rating Based on Plans – Field Confirmation Required

**How does this floor plan rate?**

Take a look: **100** = Standard new home\* **130** = Typical resale home\*\*  
The lower the number, the better! Refer to the RESNET® HERS index brochure or go to [www.RESNET.us](http://www.RESNET.us) for details.

**What's a HERS® Index?** HERS stands for Home Energy Rating System, a system created by RESNET® to measure home energy efficiency.®

A Projected HERS index or rating is a computer simulation performed prior to construction by a third-party HERS rater using RESNET-accredited rating software, rated feature and specification data derived from home plans, features and specifications, and other data selected or assumed by the rater. The projected HERS index is approximate and is subject to change without notice. Actual results will vary.

\*This information is presented for education purposes only. The HERS index for a confirmed rating will be determined by a third-party HERS rater based on data gathered from on-site observations and, if required, testing of rated features for a home as featured, optioned, located, oriented and/or built.  
+Standard new home is based on the RESNET® Reference Home definition with a HERS® index of 100 (based on the 2006 International Energy Conservation Code).  
++Typical resale home is based on the U.S. Department of Energy definition with a HERS® index of 130.

®RESNET® has developed the HERS® index to indicate the comparative efficiencies of homes. It is no guarantee that energy efficiencies will be achieved.