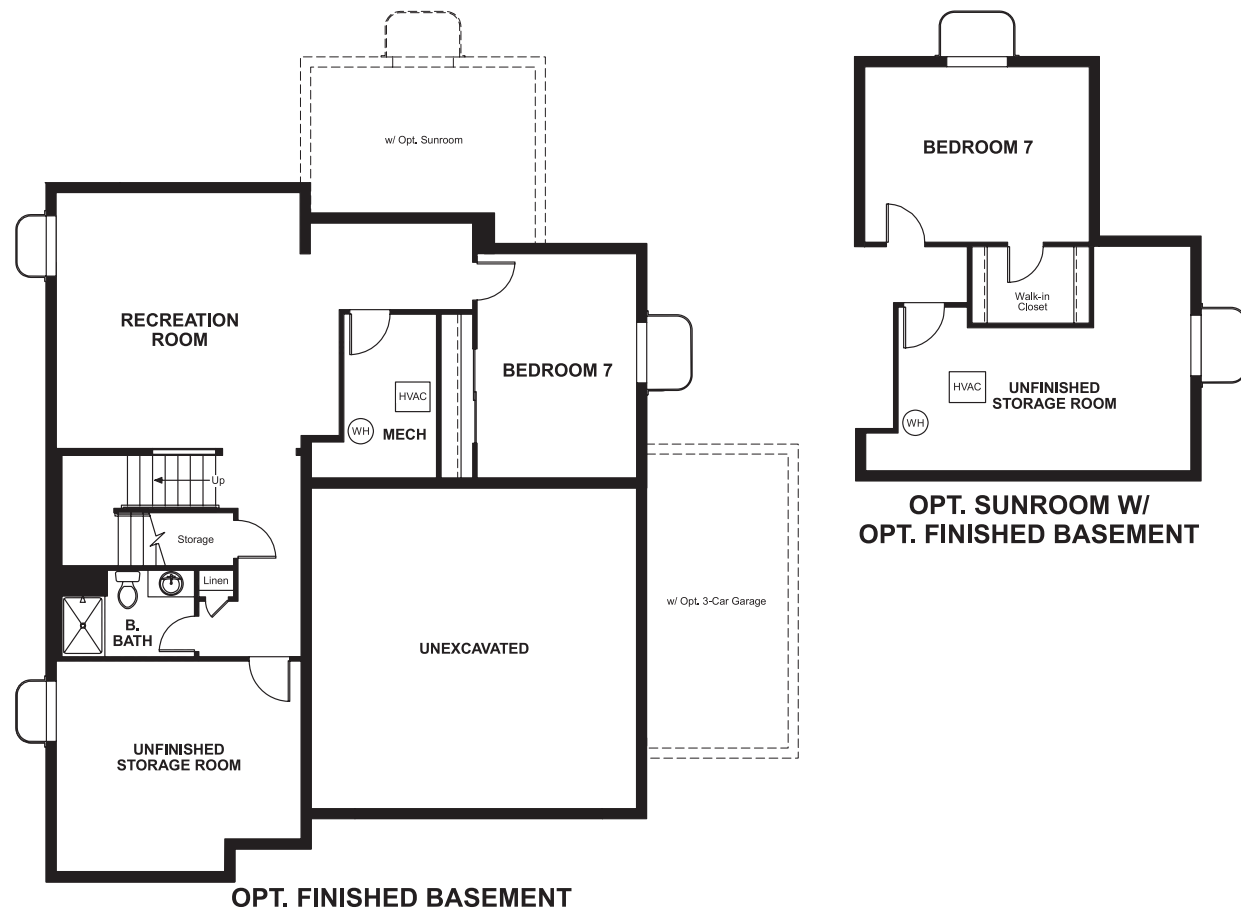


Colliers Hill
ALISON

Approx. square feet: 2,560
Stories: 2
Bedrooms: 4-7

Garage: 2-3-car
Plan Number: D24A

Floor Plan
Basement



Elevation A

Available elevations:



Elevation A



Elevation B



Elevation C



Elevation D

Approx. square feet: 2,560
Stories: 2
Bedrooms: 4-7
Garage: 2-3-car
Plan Number: D24A

The Alison offers beautiful exterior options and an open two-story floor plan. The formal living room is located off the front entry, which leads back to the kitchen and nook overlooking the family room with optional fireplace. The second floor has a large master suite and convenient laundry room.

COMMUNITY LOCATION
County Road 5 & Weld County Road 8
Erie, CO 80504
303-850-5750

HOME GALLERY
8000 East Bellview Avenue, Suite B-90
Greenwood Village, CO 80111
303-850-5750



COMMUNITY LOCATION
County Road 5 & Weld County Road 8
Erie, CO 80504
303-850-5750

HOME GALLERY
8000 East Bellview Avenue, Suite B-90
Greenwood Village, CO 80111
303-850-5750



Colliers Hill
ALISON

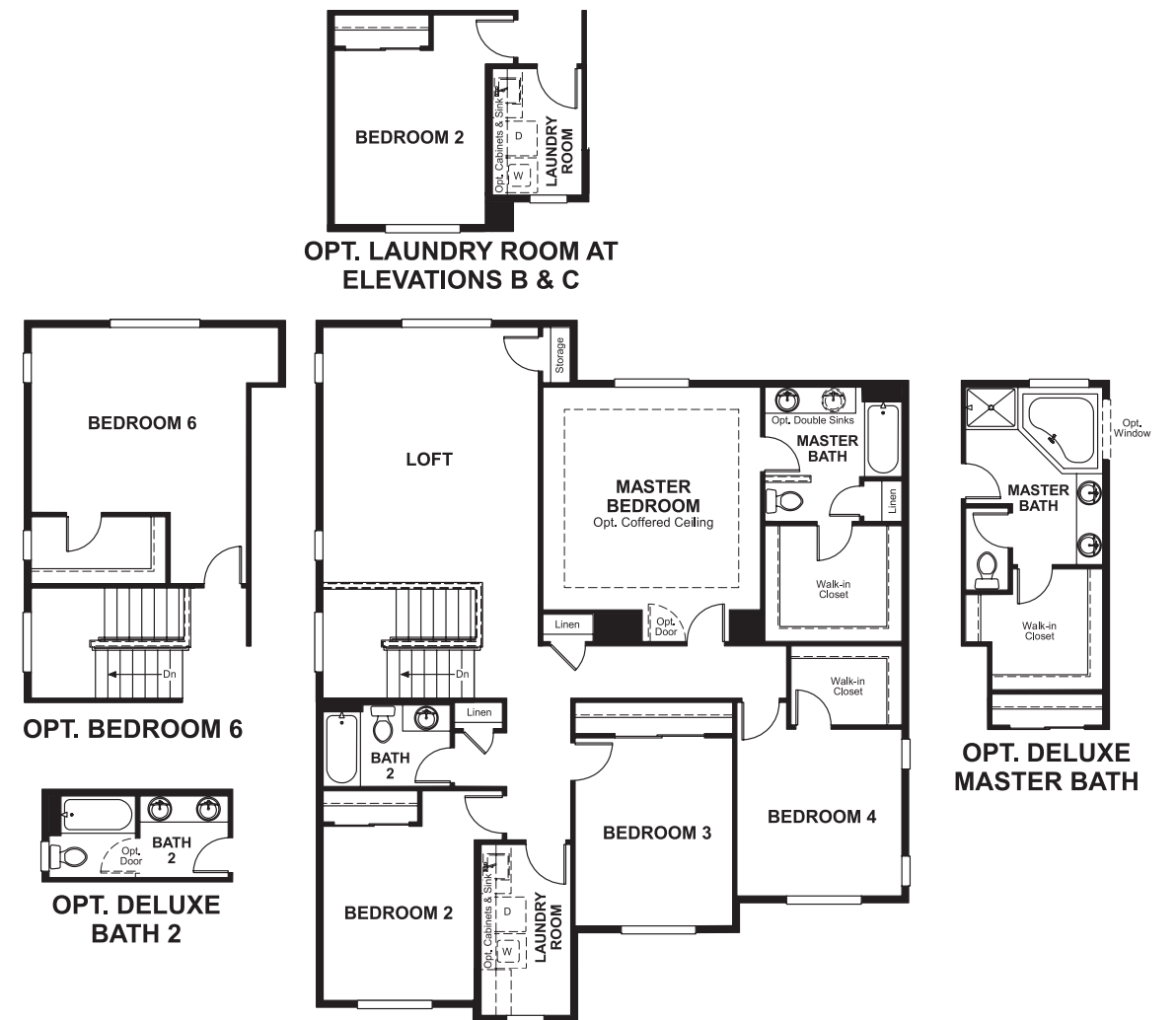
Approx. square feet: 2,560
Stories: 2
Bedrooms: 4-7

Garage: 2-3-car
Plan Number: D24A

Floor Plan
First Floor



Floor Plan
Second Floor



THIS PLAN'S PROJECTED
HERS® INDEX = 55*
Projected Rating Based on Plans – Field Confirmation Required

How does this floor plan rate?
Take a look: **100** = Standard new home* **130** = Typical resale home**
The lower the number, the better! Refer to the RESNET® HERS index brochure or go to www.RESNET.us for details.

What's a HERS® Index? HERS stands for Home Energy Rating System, a system created by RESNET® to measure home energy efficiency.[^]
A Projected HERS index or rating is a computer simulation performed prior to construction by a third-party HERS rater using RESNET-accredited rating software, rated feature and specification data derived from home plans, features and specifications, and other data selected or assumed by the rater. The projected HERS index is approximate and is subject to change without notice. Actual results will vary.

*This information is presented for education purposes only. The HERS index for a confirmed rating will be determined by a third-party HERS rater based on data gathered from on-site observations and, if required, testing of rated features for a home as featured, optioned, located, oriented and/or built.
+Standard new home is based on the RESNET® Reference Home definition with a HERS® index of 100 (based on the 2006 International Energy Conservation Code).
**Typical resale home is based on the U.S. Department of Energy definition with a HERS® index of 130.

[^]RESNET® has developed the HERS® index to indicate the comparative efficiencies of homes. It is no guarantee that energy efficiencies will be achieved.