

Emerald Pointe
ALISON



Elevation C

Approx. square feet: 2,500
Stories: 2
Bedrooms: 4 - 6
Garage: 2- to 3-car
Plan Number: W24A

The main floor of the Alison includes a formal living room, a spacious family room with fireplace and an open kitchen with an island and breakfast nook. The upstairs is home to a lavish master suite with optional deluxe bath, plus a loft for entertaining. Options include a chef's kitchen, covered patio and study or bedroom in lieu of the living room.

Available elevations:



Elevation C



Elevation D



Elevation E

COMMUNITY LOCATION
 11402 175th Street Court East
 Puyallup, WA 98375
 253-693-4806

HOME GALLERY
 20829 72nd Avenue South, Suite 115
 Kent, WA 98032
 253-446-7277



COMMUNITY LOCATION
 11402 175th Street Court East
 Puyallup, WA 98375
 253-693-4806

HOME GALLERY
 20829 72nd Avenue South, Suite 115
 Kent, WA 98032
 253-446-7277

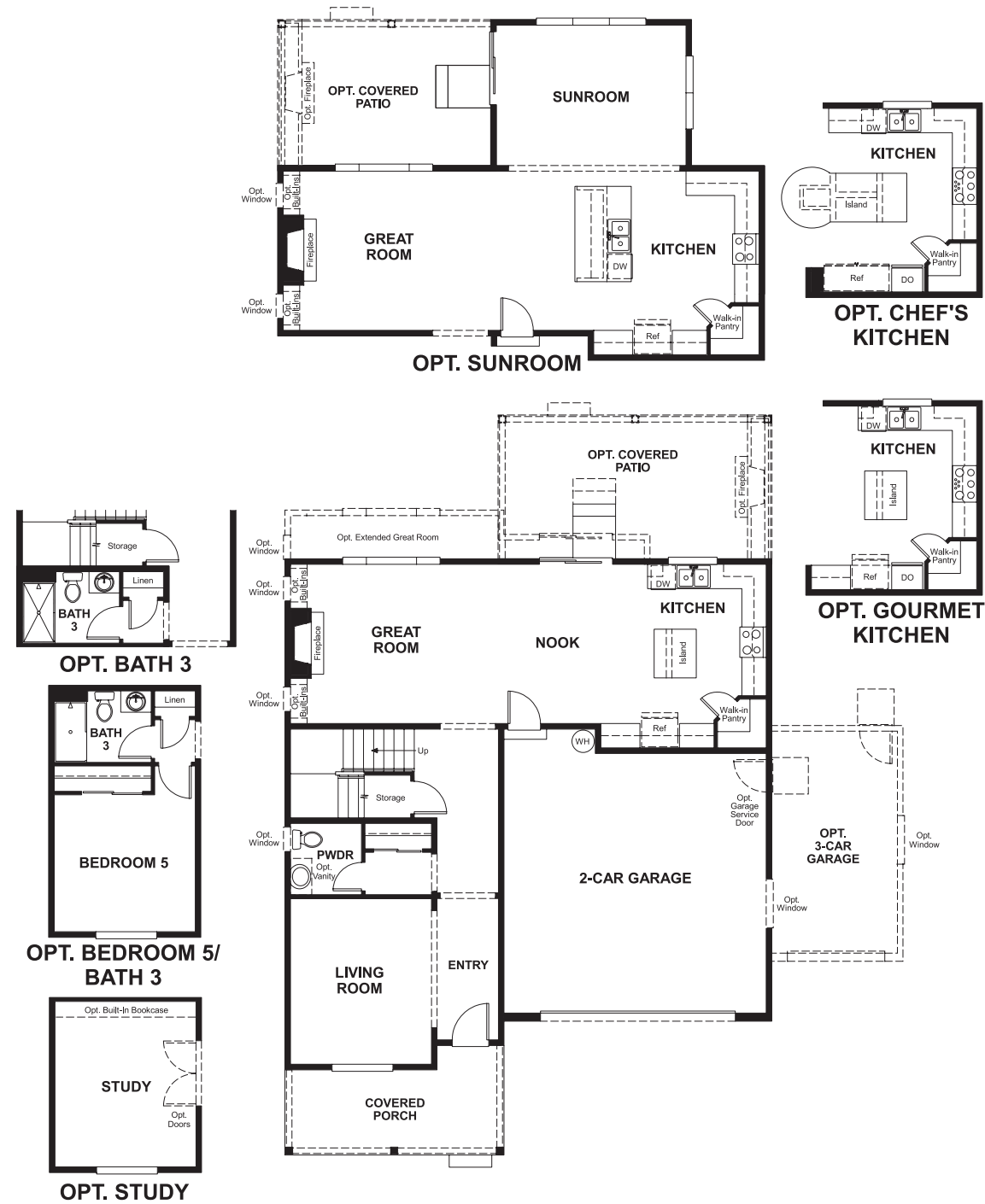


Emerald Pointe
ALISON

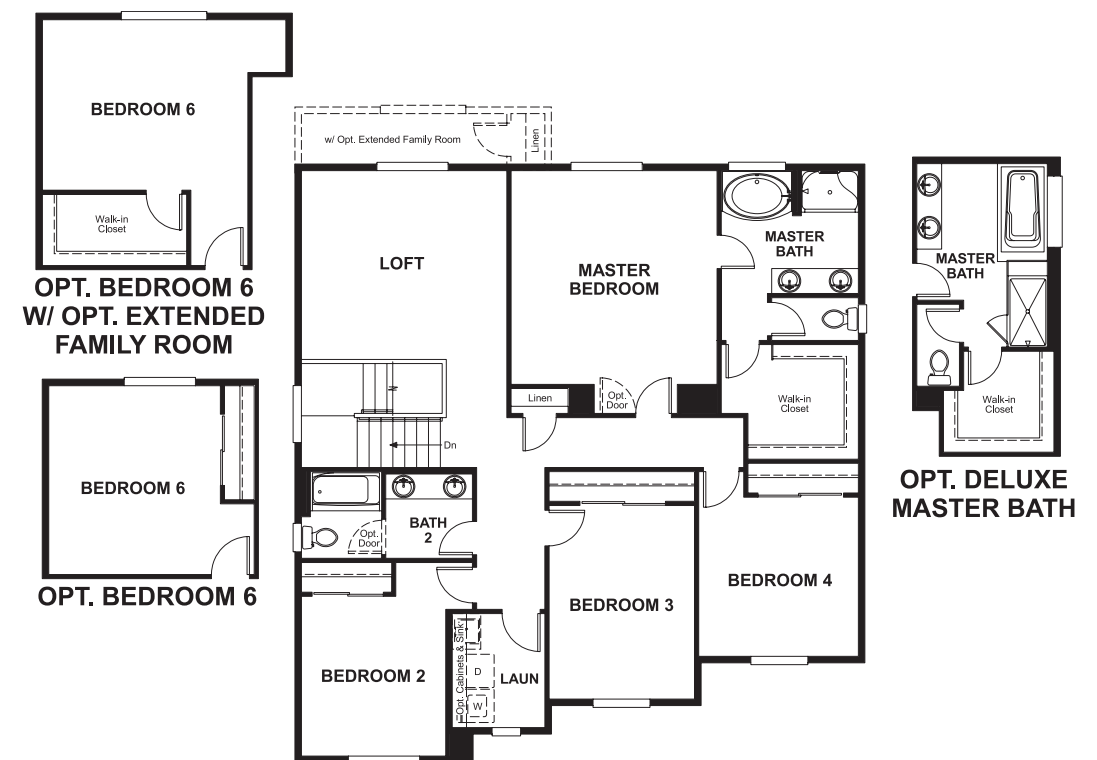
Approx. square feet: 2,500
Stories: 2
Bedrooms: 4 - 6

Garage: 2- to 3-car
Plan Number: W24A

Floor Plan
Main Floor



Floor Plan
Second Floor



**THIS PLAN'S PROJECTED
HERS® INDEX = 66***
Projected Rating Based on Plans – Field Confirmation Required

How does this floor plan rate?
Take a look: **100** = Standard new home* **130** = Typical resale home**
The lower the number, the better! Refer to the RESNET® HERS index brochure or go to www.RESNET.us for details.

What's a HERS® Index? HERS stands for Home Energy Rating System, a system created by RESNET® to measure home energy efficiency.[^]
A Projected HERS index or rating is a computer simulation performed prior to construction by a third-party HERS rater using RESNET-accredited rating software, rated feature and specification data derived from home plans, features and specifications, and other data selected or assumed by the rater. The projected HERS index is approximate and is subject to change without notice. Actual results will vary.

*This information is presented for education purposes only. The HERS index for a confirmed rating will be determined by a third-party HERS rater based on data gathered from on-site observations and, if required, testing of rated features for a home as featured, optioned, located, oriented and/or built.
+Standard new home is based on the RESNET® Reference Home definition with a HERS® index of 100 (based on the 2006 International Energy Conservation Code).
++Typical resale home is based on the U.S. Department of Energy definition with a HERS® index of 130.

[^]RESNET® has developed the HERS® index to indicate the comparative efficiencies of homes. It is no guarantee that energy efficiencies will be achieved.