

River Grove
ALISON



Elevation A

Approx. square feet: 2,650
Stories: 2
Bedrooms: 4 - 6
Garage: 2-car
Plan Number: L263

The main floor of the Alison includes a formal living room, a spacious family room with optional fireplace and a gourmet kitchen. The upstairs is home to a lavish master suite with private bath, plus a loft for entertaining. Personalization options include a study or main-floor bedroom, an extra bedroom in lieu of the loft and additional master bath configurations to optimize your spa-like space.

Available elevations:



Elevation A



Elevation B



Elevation C

COMMUNITY LOCATION

Starr Avenue and Haven Street
 Las Vegas, NV 89123
 702-638-4440

HOME GALLERY

7770 South Dean Martin Drive, Suite 308
 Las Vegas, NV 89139
 702-617-8400



COMMUNITY LOCATION

Starr Avenue and Haven Street
 Las Vegas, NV 89123
 702-638-4440

HOME GALLERY

7770 South Dean Martin Drive, Suite 308
 Las Vegas, NV 89139
 702-617-8400

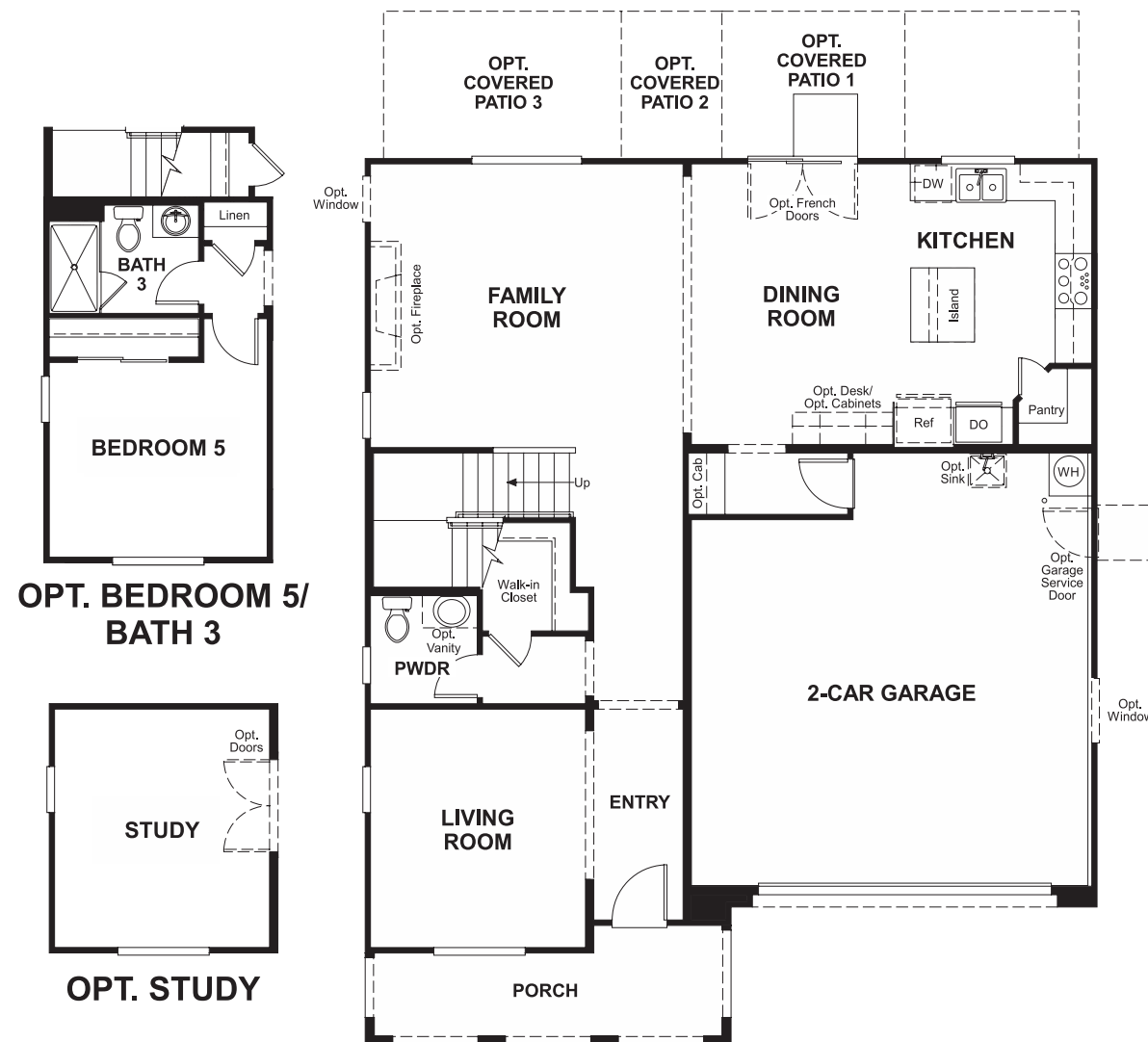


River Grove
ALISON

Approx. square feet: 2,650
Stories: 2
Bedrooms: 4 - 6

Garage: 2-car
Plan Number: L263

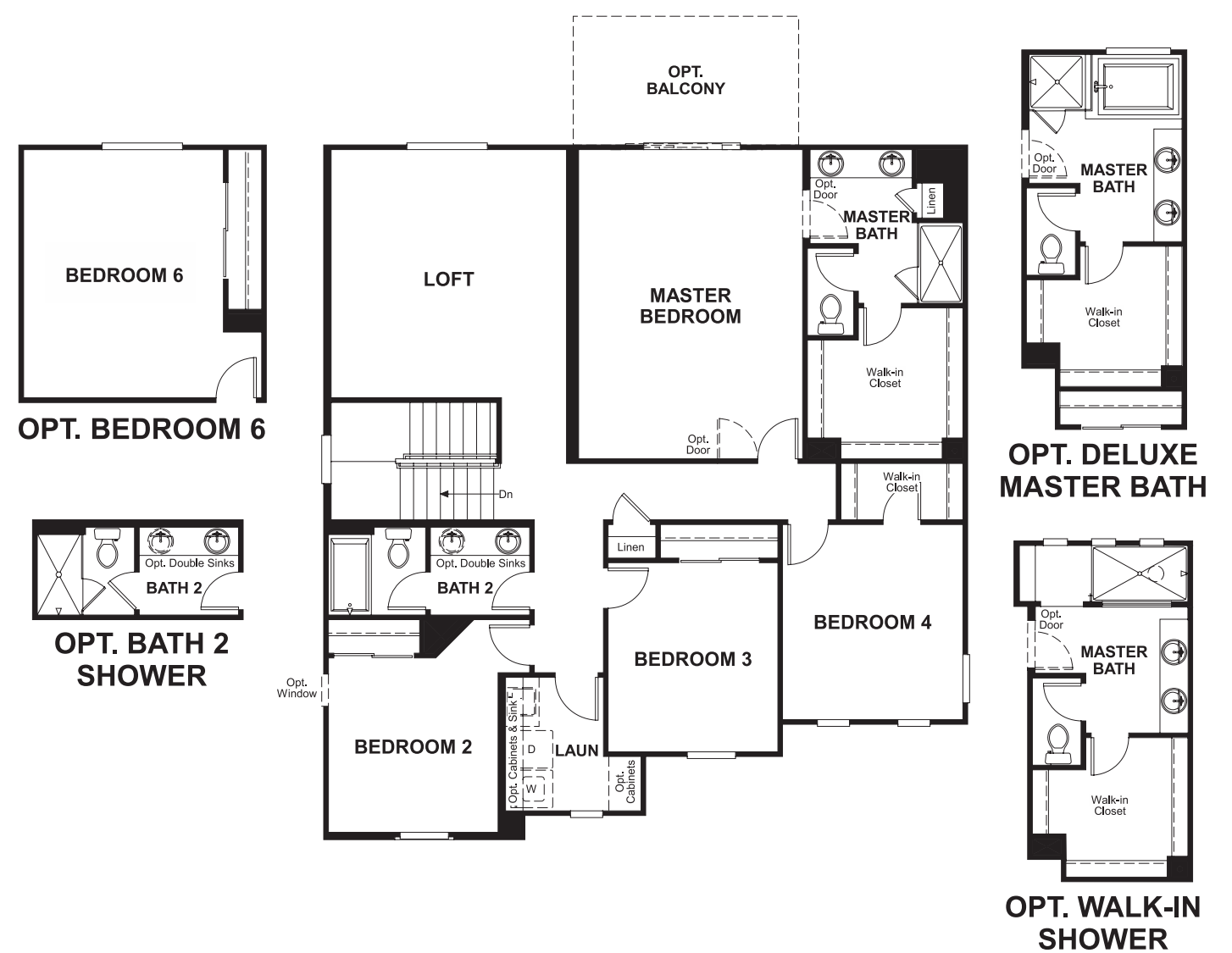
Floor Plan
Main Floor



**OPT. BEDROOM 5/
BATH 3**

OPT. STUDY

Floor Plan
Second Floor



OPT. BEDROOM 6

**OPT. BATH 2
SHOWER**

**OPT. DELUXE
MASTER BATH**

**OPT. WALK-IN
SHOWER**

**THIS PLAN'S PROJECTED
HERS® INDEX = 67***
Projected Rating Based on Plans – Field Confirmation Required

How does this floor plan rate?
Take a look: **100** = Standard new home* **130** = Typical resale home**
The lower the number, the better! Refer to the RESNET® HERS index brochure or go to www.RESNET.us for details.

What's a HERS® Index? HERS stands for Home Energy Rating System, a system created by RESNET® to measure home energy efficiency.[^]
A Projected HERS index or rating is a computer simulation performed prior to construction by a third-party HERS rater using RESNET-accredited rating software, rated feature and specification data derived from home plans, features and specifications, and other data selected or assumed by the rater. The projected HERS index is approximate and is subject to change without notice. Actual results will vary.

*This information is presented for education purposes only. The HERS index for a confirmed rating will be determined by a third-party HERS rater based on data gathered from on-site observations and, if required, testing of rated features for a home as featured, optioned, located, oriented and/or built.
+Standard new home is based on the RESNET® Reference Home definition with a HERS® index of 100 (based on the 2006 International Energy Conservation Code).
**Typical resale home is based on the U.S. Department of Energy definition with a HERS® index of 130.

[^]RESNET® has developed the HERS® index to indicate the comparative efficiencies of homes. It is no guarantee that energy efficiencies will be achieved.