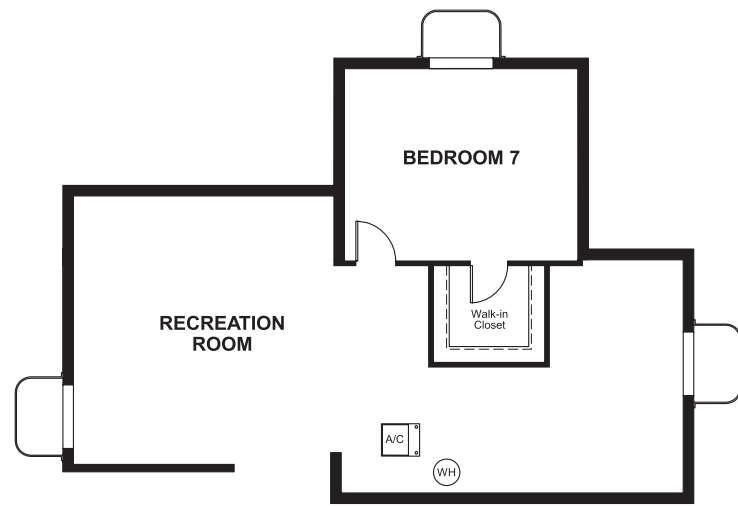


Arden Parke
ALISON

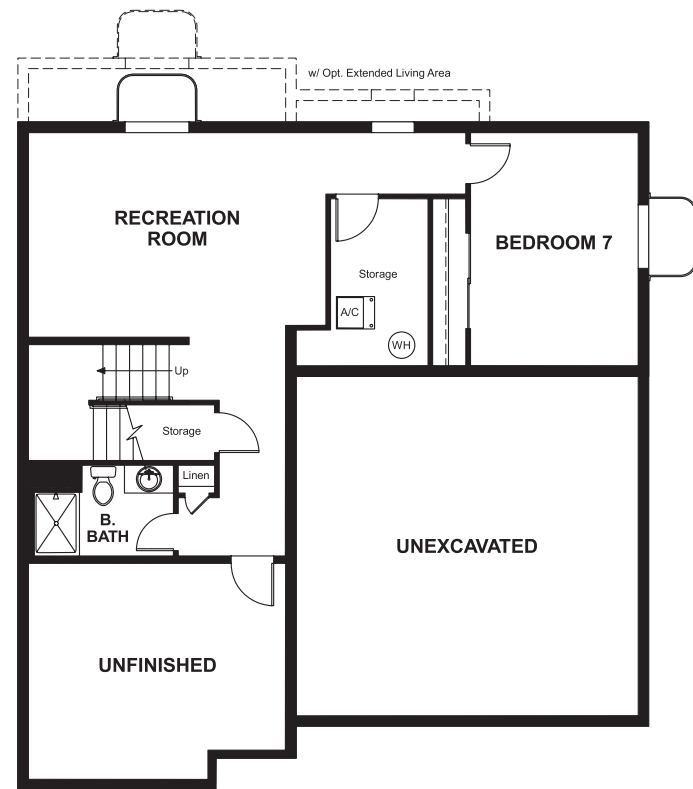
Approx. square feet: 2,450
Stories: 2
Bedrooms: 4 - 7

Garage: 2-car
Plan Number: M24A

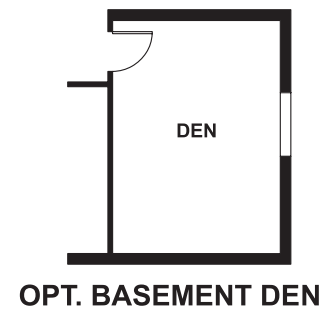
Floor Plan
Basement



w/ OPT. SUNROOM



OPT. FINISHED BASEMENT



COMMUNITY LOCATION

North Rolling Road and Rolling Glen Road
Catonsville, MD 21228
410-312-2829

HOME GALLERY

6210 Old Dobbin Lane, Suite 190
Columbia, MD 21045
888-772-4545



Arden Parke
ALISON

Approx. square feet: 2,450
Stories: 2
Bedrooms: 4 - 7
Garage: 2-car
Plan Number: M24A

Choose from a range of options including a spacious sunroom, finished basement with recreation room, luxurious deluxe master bath and up to seven bedrooms to create the home that's perfect for your lifestyle. The main floor can be further customized with a study, an additional bathroom and deck.



Elevation A

Available elevations:



Elevation A



Elevation B



Elevation C



Elevation D



Elevation E



Elevation F

COMMUNITY LOCATION

North Rolling Road and Rolling Glen Road
Catonsville, MD 21228
410-312-2829

HOME GALLERY

6210 Old Dobbin Lane, Suite 190
Columbia, MD 21045
888-772-4545

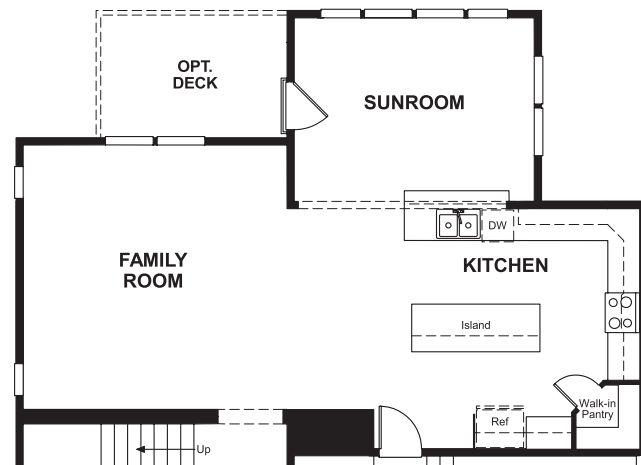


Arden Parke
ALISON

Approx. square feet: 2,450
Stories: 2
Bedrooms: 4 - 7

Garage: 2-car
Plan Number: M24A

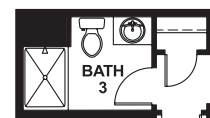
Floor Plan
Main Floor



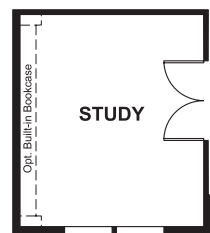
OPT. SUNROOM



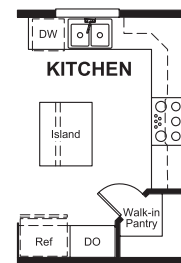
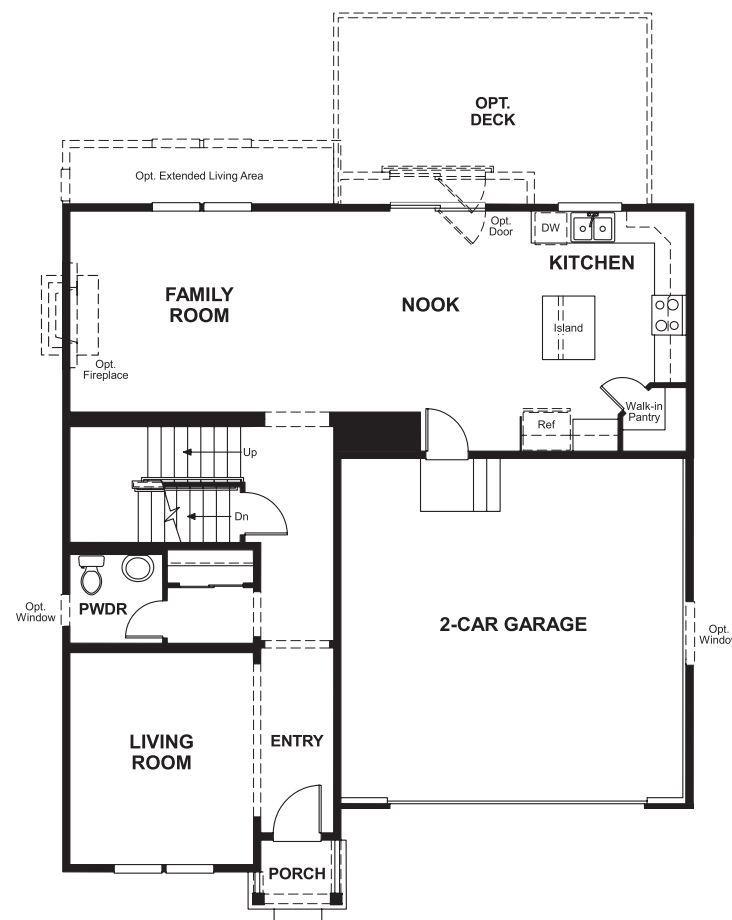
OPT. BATH 3



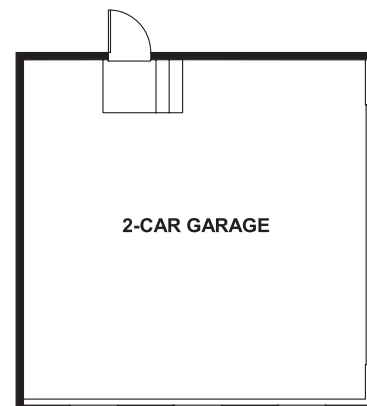
OPT. BEDROOM 5/
BATH 3



OPT. STUDY



OPT. GOURMET
KITCHEN

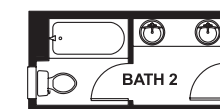


OPT. 2-CAR SIDE-LOAD
GARAGE

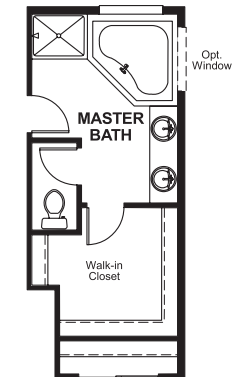
Floor Plan
Second Floor



OPT. BEDROOM 6



OPT. DELUXE
BATH 2



OPT. DELUXE
MASTER BATH

**THIS PLAN'S PROJECTED
HERS® INDEX = 57***
Projected Rating Based on Plans – Field Confirmation Required

How does this floor plan rate?

Take a look: **100** = Standard new home* **130** = Typical resale home**
The lower the number, the better! Refer to the RESNET® HERS index brochure or go to www.RESNET.us for details.

What's a HERS® Index? HERS stands for Home Energy Rating System, a system created by RESNET® to measure home energy efficiency.†

A Projected HERS index or rating is a computer simulation performed prior to construction by a third-party HERS rater using RESNET-accredited rating software, rated feature and specification data derived from home plans, features and specifications, and other data selected or assumed by the rater. The projected HERS index is approximate and is subject to change without notice. Actual results will vary.

*This information is presented for education purposes only. The HERS index for a confirmed rating will be determined by a third-party HERS rater based on data gathered from on-site observations and, if required, testing of rated features for a home as featured, optioned, located, oriented and/or built.

+Standard new home is based on the RESNET® Reference Home definition with a HERS® index of 100 (based on the 2006 International Energy Conservation Code).

**Typical resale home is based on the U.S. Department of Energy definition with a HERS® index of 130.

†RESNET® has developed the HERS® index to indicate the comparative efficiencies of homes. It is no guarantee that energy efficiencies will be achieved.