

ROGERS RANCH
AMETHYST



APPROX. SQUARE FEET: 1,400
STORIES: 1
BEDROOMS: 2 - 3
GARAGE: 2-car
PLAN NUMBER: P901

This ranch-style floor plan offers an open layout that's perfect for entertaining. Gather with friends and family in the expansive great room, dining room and kitchen, and add a covered patio for additional outdoor living space. The master bedroom has a large walk-in closet and a private bath. This home also includes a study, which can be optioned as an additional bedroom.

Available elevation:



Elevation A



Elevation B



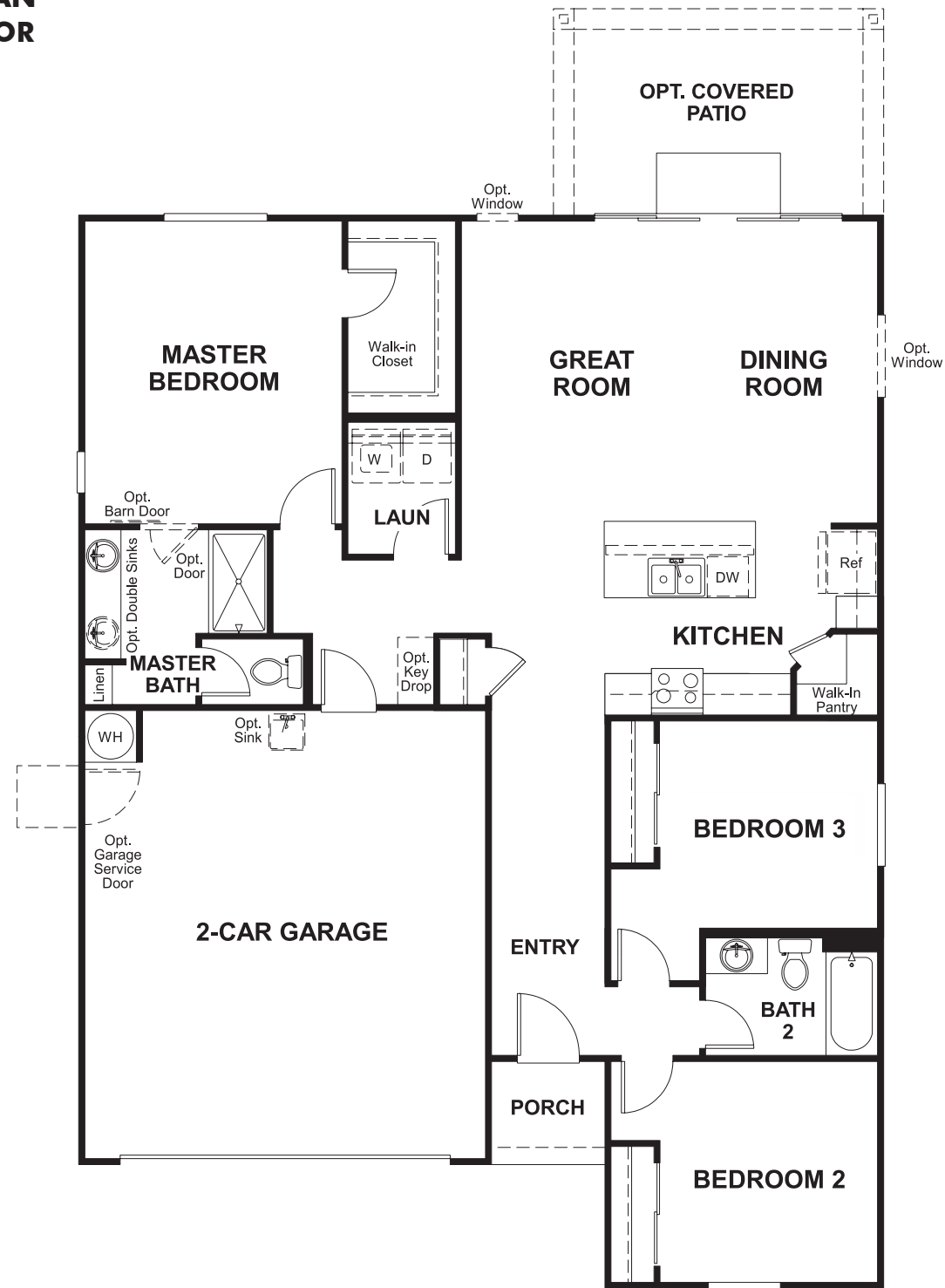
Elevation C

COMMUNITY LOCATION HOME GALLERY
6518 South 47th Lane 16427 North Scottsdale Road, Suite 175
Laveen, AZ 85339 Scottsdale, AZ 85254
623-866-5212 623-866-5212

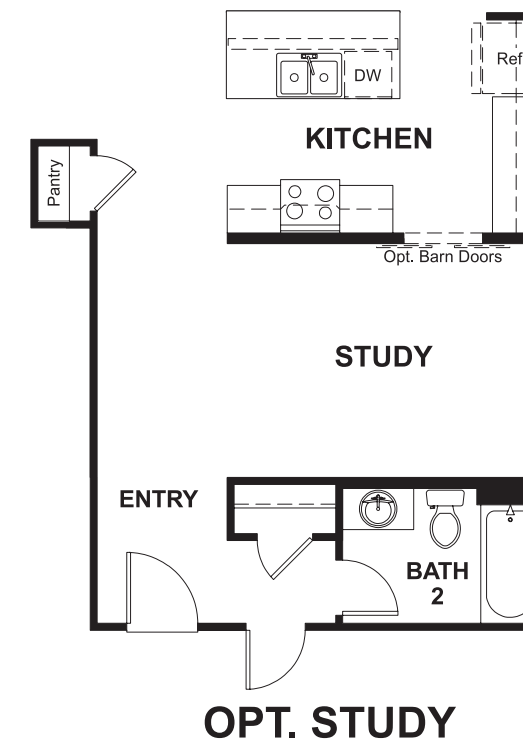
RICHMONDAMERICAN.COM/SEASONS

FPO Example is based on a sales price of \$280,000 and a 30-year fixed-rate FHA loan with an interest rate of 3.75% and a 3.5% down payment. The total loan amount, including the upfront mortgage insurance premium, is \$272,902. Monthly principal and interest payment = \$1,263.85. APR = 4.70%. Taxes, hazard insurance and monthly mortgage insurance premiums are not calculated in the above payment and actual payment will be higher. Program is available to owner occupants only and is subject to availability, a debt-to-income ratio of 43% or less, maximum 96.5% loan-to-value ratio, qualification using full documentation and a minimum FICO score of 640. Interest rate is not guaranteed and is subject to change without notice. ©2016 Richmond American Homes; Richmond American Homes of Maryland, Inc., MHBR #299; Richmond American Homes of Pennsylvania, Inc. 07-29-2016

FLOOR PLAN
MAIN FLOOR



FLOOR PLAN
MAIN FLOOR OPTIONS



**THIS PLAN'S PROJECTED
HERS® INDEX = 70***
Projected Rating Based on Plans – Field Confirmation Required

How does this floor plan rate?
Take a look: **100** = Standard new home+ **130** = Typical resale home**
The lower the number, the better! Refer to the RESNET® HERS index brochure or go to www.RESNET.us for details.

What's a HERS® Index? HERS stands for Home Energy Rating System, a system created by RESNET® to measure home energy efficiency.^
A Projected HERS index or rating is a computer simulation performed prior to construction by a third-party HERS rater using RESNET-accredited rating software, rated feature and specification data derived from home plans, features and specifications, and other data selected or assumed by the rater. The projected HERS index is approximate and is subject to change without notice. Actual results will vary.

*This information is presented for education purposes only. The HERS index for a confirmed rating will be determined by a third-party HERS rater based on data gathered from on-site observations and, if required, testing of rated features for a home as featured, optioned, located, oriented and/or built.
+Standard new home is based on the RESNET® Reference Home definition with a HERS® index of 100 (based on the 2006 International Energy Conservation Code).
**Typical resale home is based on the U.S. Department of Energy definition with a HERS® index of 130.

^RESNET® has developed the HERS® index to indicate the comparative efficiencies of homes. It is no guarantee that energy efficiencies will be achieved.