

Gold Ridge (Patrick's Place)
ASHTON



Elevation A

Approx. square feet: 2,400
Stories: 2
Bedrooms: 4
Garage: 2-car
Plan Number: N234

Elegant living and dining rooms welcome guests to this two-story home. For more casual gatherings, an open kitchen, nook and family room occupy the rest of the first floor. Upstairs you'll find three comfortable bedrooms and a luxurious master suite with deluxe bath. Options include a master retreat and a study.

Available elevations:



Elevation A



Elevation B



Elevation C

COMMUNITY LOCATION

5290 Klingsell Place
 Fairfield, CA 94533
 707-416-4992

HOME GALLERY

5274 Klingsell Place
 Fairfield, CA 94533
 By Appointment Only



COMMUNITY LOCATION

5290 Klingsell Place
 Fairfield, CA 94533
 707-416-4992

HOME GALLERY

5274 Klingsell Place
 Fairfield, CA 94533
 By Appointment Only

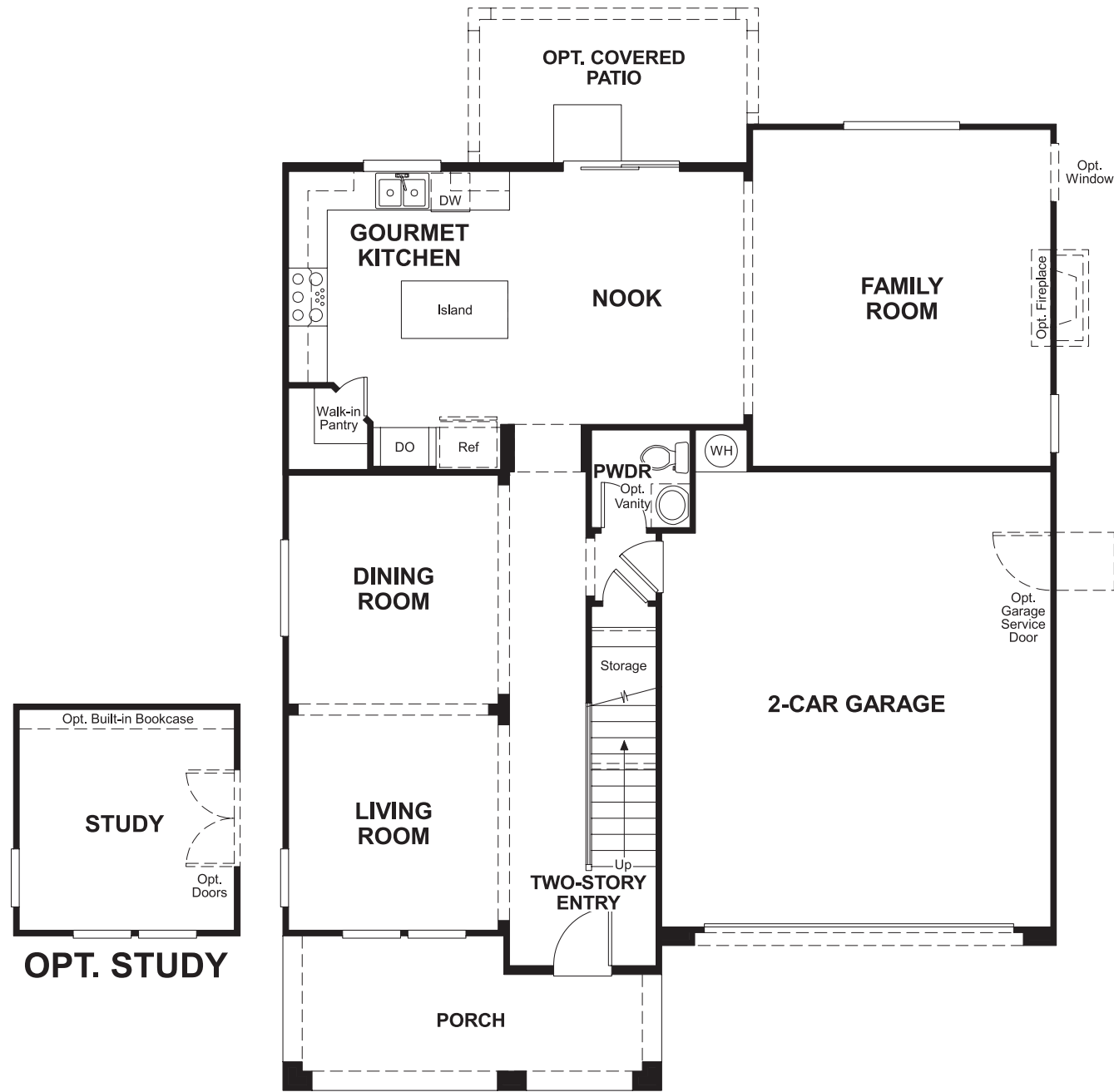


Gold Ridge (Patrick's Place)
ASHTON

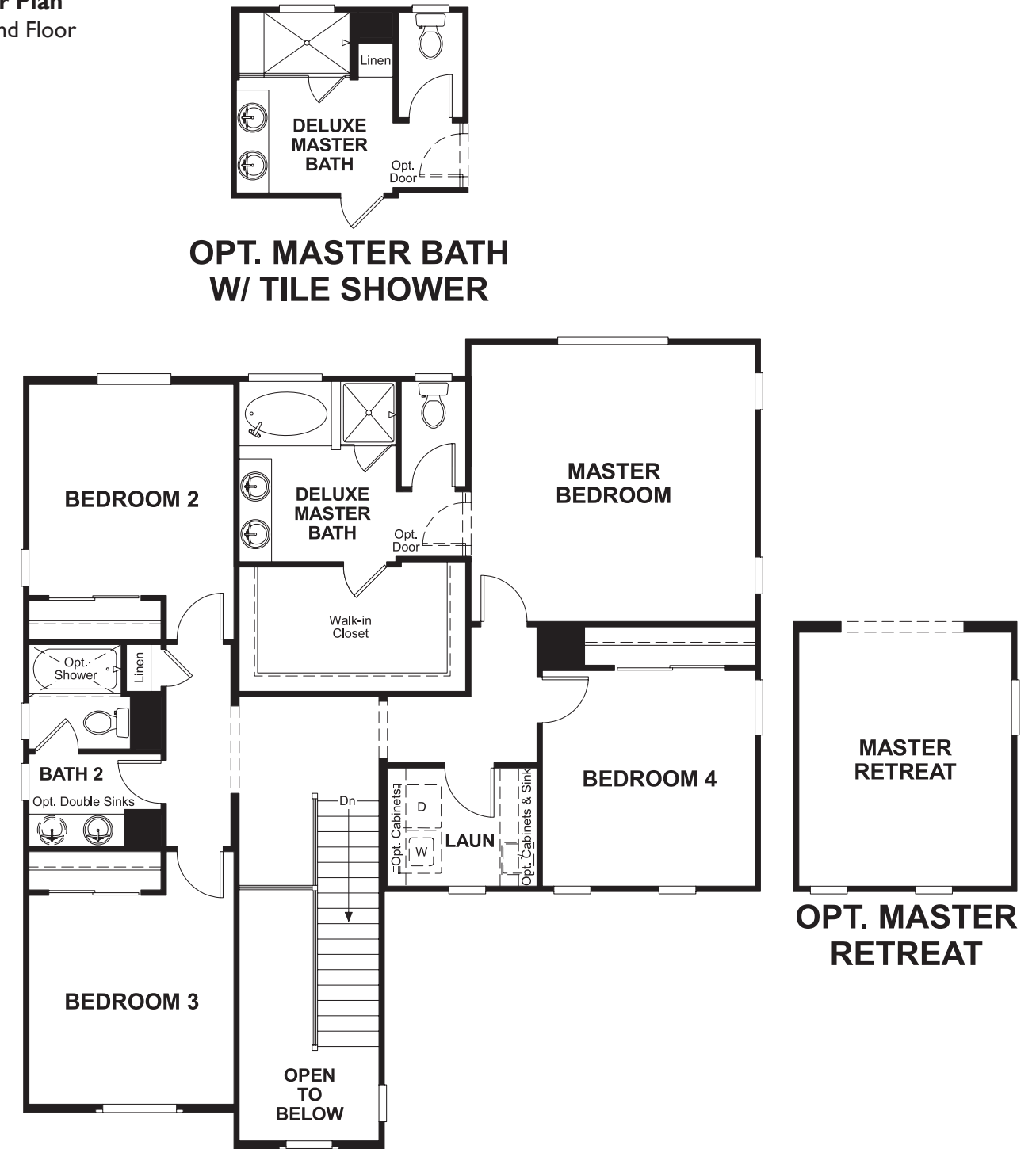
Approx. square feet: 2,400
Stories: 2
Bedrooms: 4

Garage: 2-car
Plan Number: N234

Floor Plan
First Floor



Floor Plan
Second Floor



THIS PLAN'S PROJECTED HERS® INDEX = 76 *
Projected Rating Based on Plans – Field Confirmation Required

How does this floor plan rate?
Take a look: **100** = Standard new home* **130** = Typical resale home**
The lower the number, the better! Refer to the RESNET® HERS index brochure or go to www.RESNET.us for details.

What's a HERS® Index? HERS stands for Home Energy Rating System, a system created by RESNET® to measure home energy efficiency.[^]
A Projected HERS index or rating is a computer simulation performed prior to construction by a third-party HERS rater using RESNET-accredited rating software, rated feature and specification data derived from home plans, features and specifications, and other data selected or assumed by the rater. The projected HERS index is approximate and is subject to change without notice. Actual results will vary.

*This information is presented for education purposes only. The HERS index for a confirmed rating will be determined by a third-party HERS rater based on data gathered from on-site observations and, if required, testing of rated features for a home as featured, optioned, located, oriented and/or built.
+Standard new home is based on the RESNET® Reference Home definition with a HERS® index of 100 (based on the 2006 International Energy Conservation Code).
++Typical resale home is based on the U.S. Department of Energy definition with a HERS® index of 130.

[^]RESNET® has developed the HERS® index to indicate the comparative efficiencies of homes. It is no guarantee that energy efficiencies will be achieved.