

Crystal Valley Ranch  
**BAILEY**

**Approx. square feet:** 2,150  
**Stories:** 2  
**Bedrooms:** 3 - 5

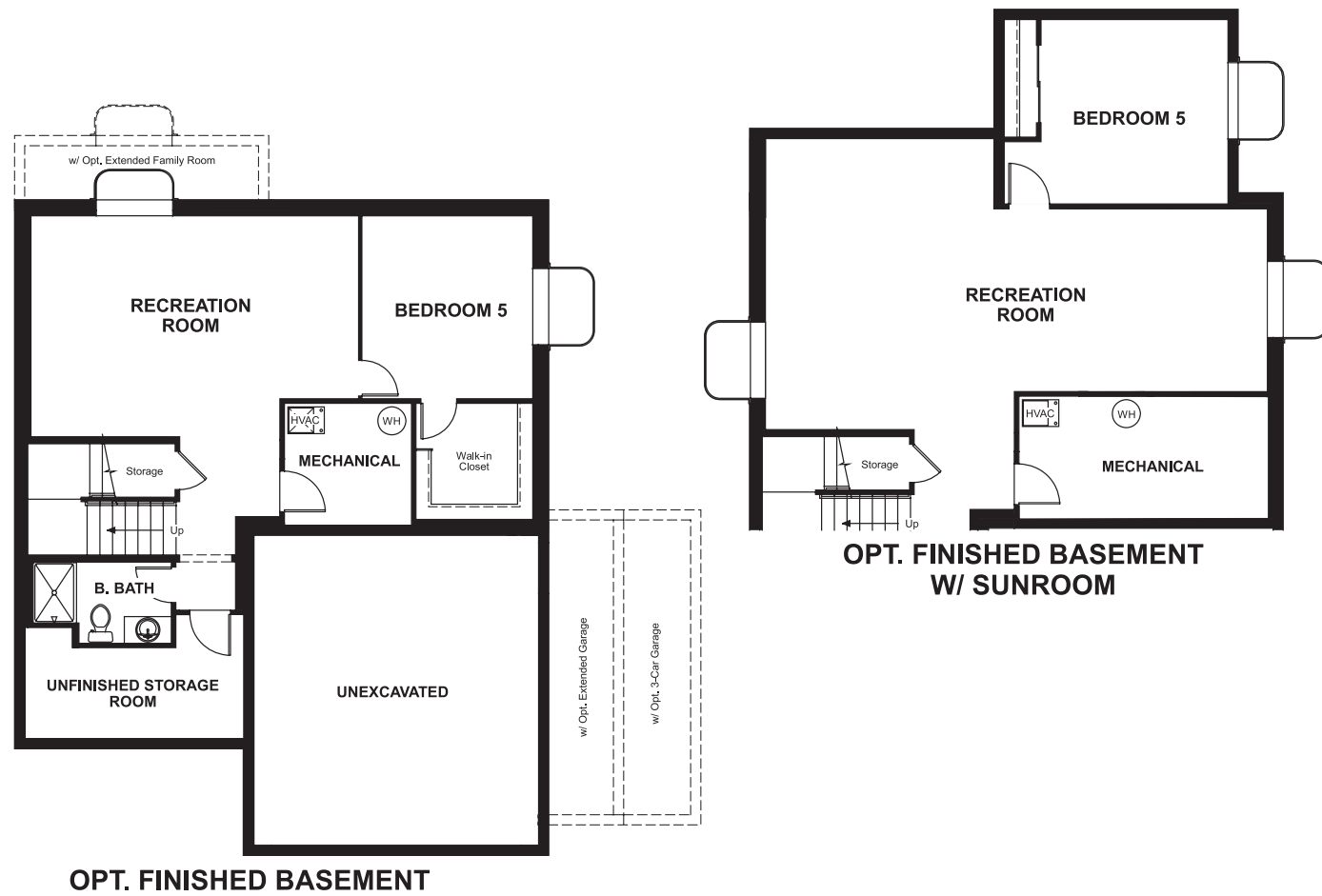
**Garage:** 2- to 3-car  
**Plan Number:** D219

Crystal Valley Ranch  
**BAILEY**

**Approx. square feet:** 2,150  
**Stories:** 2  
**Bedrooms:** 3 - 5  
**Garage:** 2- to 3-car  
**Plan Number:** D219

The main floor of the beautiful Bailey plan offers a formal living room, a spacious great room and an open dining room that flows into a corner kitchen with a walk-in pantry and optional gourmet features. Upstairs, enjoy a versatile loft, a convenient laundry and a luxurious master suite with an optional deluxe bath. Personalize this plan with a private study, covered patio, finished basement and more!

**Floor Plan**  
Basement



**Elevation A**

**Available elevations:**



**Elevation A**



**Elevation B**



**Elevation C**

**COMMUNITY LOCATION**  
5641 Echo Hollow Street  
Castle Rock, CO 80104  
303-620-5425

**HOME GALLERY**  
8000 East Belleview Avenue, Suite C-12  
Greenwood Village, CO 80111  
888-402-4663



**COMMUNITY LOCATION**  
5641 Echo Hollow Street  
Castle Rock, CO 80104  
303-620-5425

**HOME GALLERY**  
8000 East Belleview Avenue, Suite C-12  
Greenwood Village, CO 80111  
888-402-4663



