

McKenna Park  
**BALSAM**



**Elevation A**

**Available elevations:**



**Elevation A**



**Elevation B**



**Elevation C**

**Approx. square feet:** 2,600  
**Stories:** 2  
**Bedrooms:** 4  
**Garage:** 3-car  
**Plan Number:** S686

The beautiful Balsam floor plan offers plenty of space for entertaining with an open great room, dining room and generous kitchen. Also on the main floor, you'll find a bedroom and full bath tucked away at the back of the home. On the second floor, there's a loft, a shared bath with two sinks, a convenient laundry and inviting bedrooms—including a master suite featuring a walk-in closet and private bath with separate shower and tub and double sinks.

**COMMUNITY LOCATION**  
6928 Ivy Drive  
Chino, CA 91710  
800-852-9714

**HOME GALLERY**  
5171 California Avenue  
Irvine, CA 92617  
800-852-9714



**COMMUNITY LOCATION**  
6928 Ivy Drive  
Chino, CA 91710  
800-852-9714

**HOME GALLERY**  
5171 California Avenue  
Irvine, CA 92617  
800-852-9714

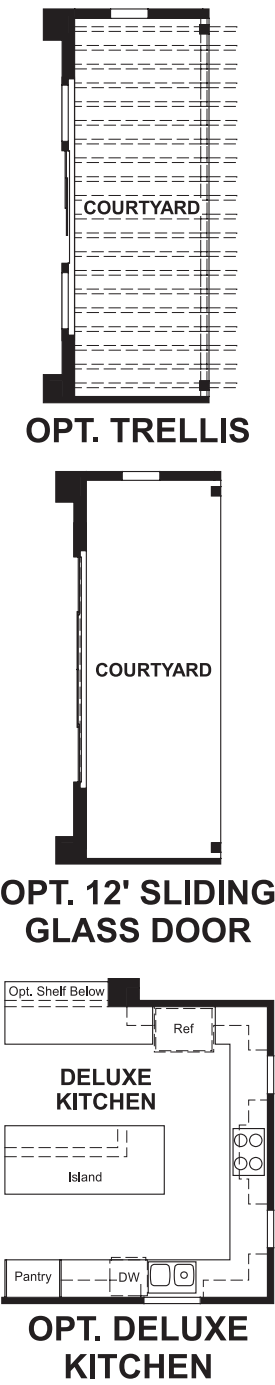
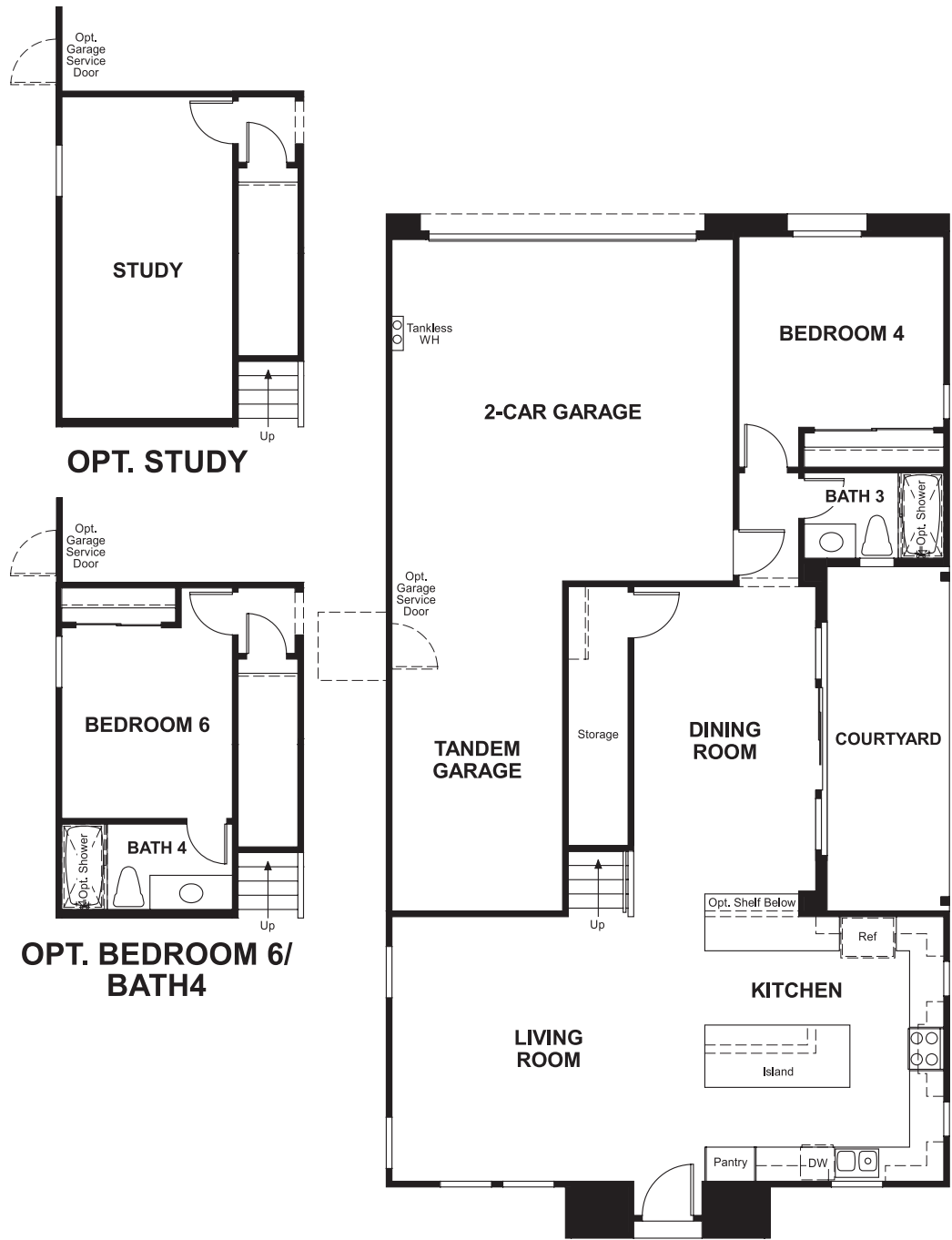


McKenna Park  
**BALSAM**

**Approx. square feet:** 2,600  
**Stories:** 2  
**Bedrooms:** 4

**Garage:** 3-car  
**Plan Number:** S686

**Floor Plan**  
Main Floor



**Floor Plan**  
Second Floor

