

Spring Hill Estates  
**BERKELEY**



**Elevation B**

**Approx. square feet:** 2,450  
**Stories:** 2  
**Bedrooms:** 3 - 5  
**Garage:** 2-car  
**Plan Number:** N554

From its covered front porch to its quiet study and spacious great room, the Berkeley was designed for convenience and comfort. This plan offers an open kitchen with center island and breakfast nook and a covered patio that's ideal for large gatherings. The second floor features a convenient laundry, a relaxing loft and three bedrooms with walk-in closets, including the lavish master suite. Customize this home with an optional gourmet kitchen and up to two extra bedrooms.

**Available elevations:**



**Elevation B**



**Elevation C**



**Elevation D**

**COMMUNITY LOCATION**  
 144 Aldrich Place  
 Mountain House, CA 95391  
 209-207-0479

**HOME GALLERY**  
 5274 Klingsell Place  
 Fairfield, CA 94533  
 707-416-2800



**COMMUNITY LOCATION**  
 144 Aldrich Place  
 Mountain House, CA 95391  
 209-207-0479

**HOME GALLERY**  
 5274 Klingsell Place  
 Fairfield, CA 94533  
 707-416-2800

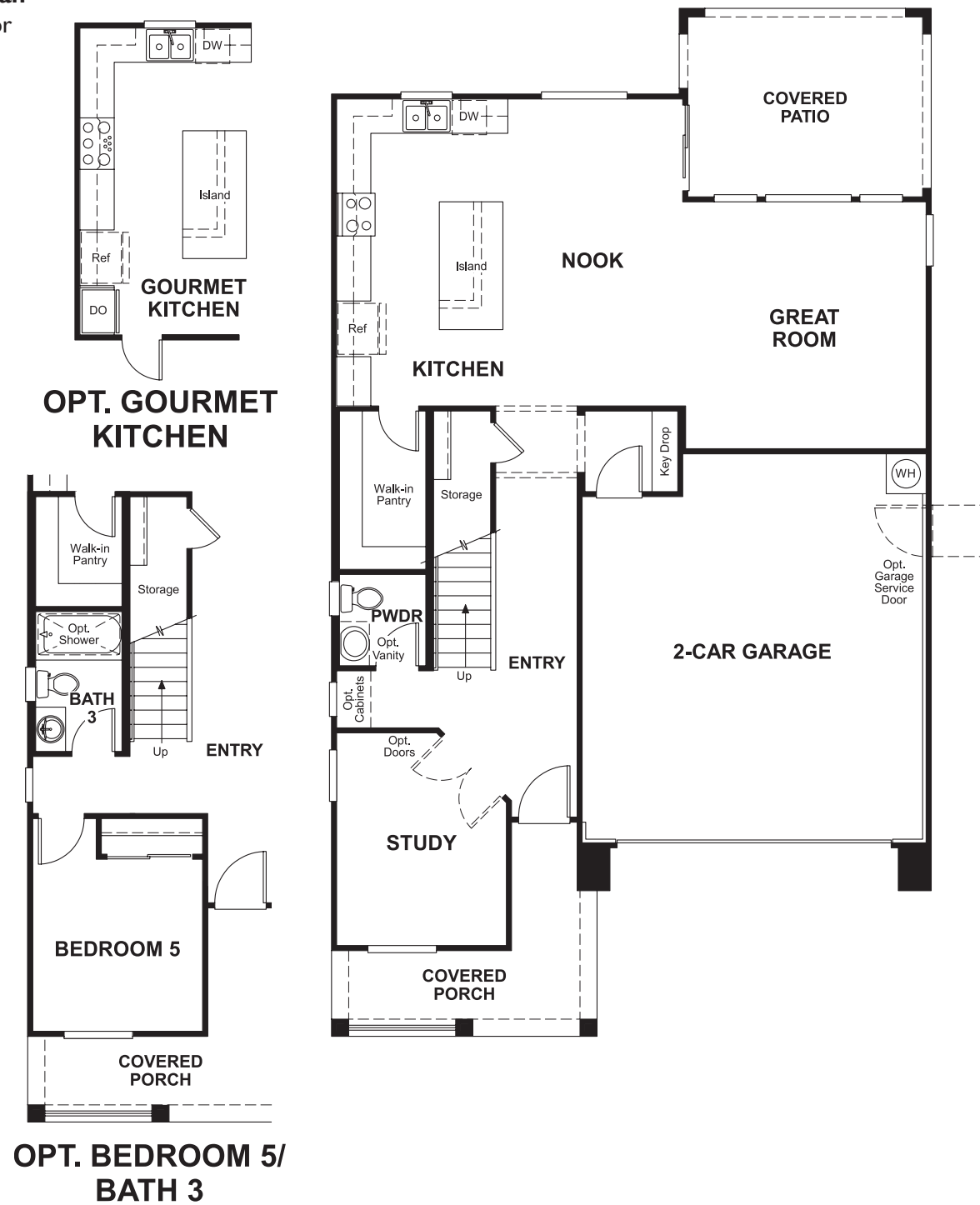


Spring Hill Estates  
**BERKELEY**

**Approx. square feet: 2,450**  
**Stories: 2**  
**Bedrooms: 3 - 5**

**Garage: 2-car**  
**Plan Number: N554**

**Floor Plan**  
First Floor



**Floor Plan**  
Second Floor



**THIS PLAN'S PROJECTED**  
**HERS® INDEX = 70\***  
Projected Rating Based on Plans – Field Confirmation Required

**How does this floor plan rate?**  
Take a look: **100** = Standard new home\* **130** = Typical resale home\*\*  
The lower the number, the better! Refer to the RESNET® HERS index brochure or go to [www.RESNET.us](http://www.RESNET.us) for details.

**What's a HERS® Index?** HERS stands for Home Energy Rating System, a system created by RESNET® to measure home energy efficiency. A Projected HERS index or rating is a computer simulation performed prior to construction by a third-party HERS rater using RESNET-accredited rating software, rated feature and specification data derived from home plans, features and specifications, and other data selected or assumed by the rater. The projected HERS index is approximate and is subject to change without notice. Actual results will vary.

\*This information is presented for education purposes only. The HERS index for a confirmed rating will be determined by a third-party HERS rater based on data gathered from on-site observations and, if required, testing of rated features for a home as featured, optioned, located, oriented and/or built.  
+Standard new home is based on the RESNET® Reference Home definition with a HERS® index of 100 (based on the 2006 International Energy Conservation Code).  
\*\*Typical resale home is based on the U.S. Department of Energy definition with a HERS® index of 130.

^RESNET® has developed the HERS® index to indicate the comparative efficiencies of homes. It is no guarantee that energy efficiencies will be achieved.