

Bella Strada
BETHANY



Elevation A

Approx. square feet: 2,950-3,100
Stories: 2
Bedrooms: 4
Garage: 2-car
Plan Number: N29B

A charming front porch and dramatic two-story entry welcome guests to the inspired Bethany plan. The main floor offers a formal dining room, a spacious great room and an open kitchen with center island, breakfast nook and optional gourmet features. Upstairs features a convenient laundry and four bedrooms, including a relaxing master suite with a deluxe master bath and an immense walk-in closet. Options include a study and additional bedrooms.

Available elevations:



Elevation A



Elevation B



Elevation C

COMMUNITY LOCATION

9601 Philta Way
 Elk Grove, CA 95757
 916-512-2003

HOME GALLERY

One Harbor Center, Suite 150
 Suisun City, CA 94533
 707-416-2800



COMMUNITY LOCATION

9601 Philta Way
 Elk Grove, CA 95757
 916-512-2003

HOME GALLERY

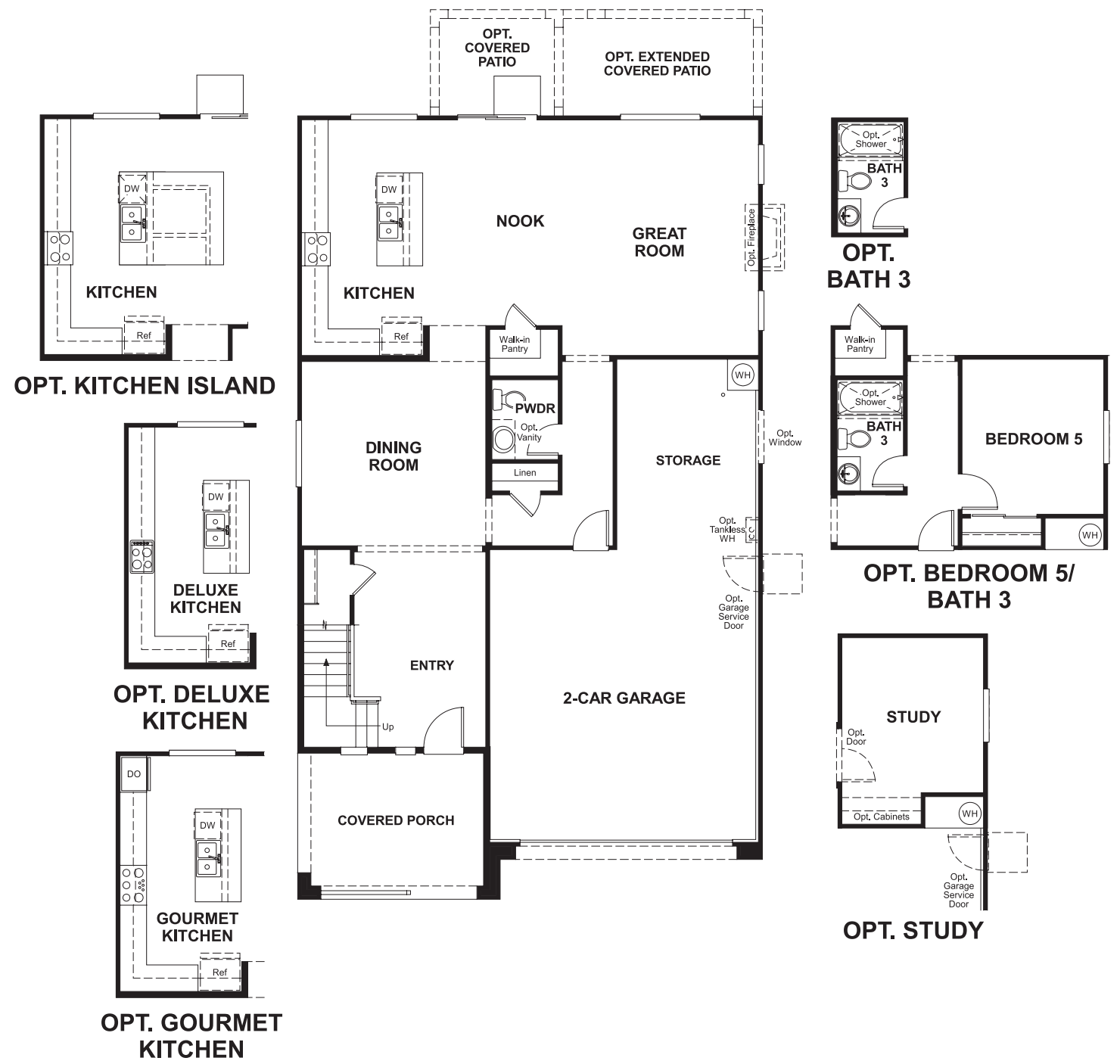
One Harbor Center, Suite 150
 Suisun City, CA 94533
 707-416-2800



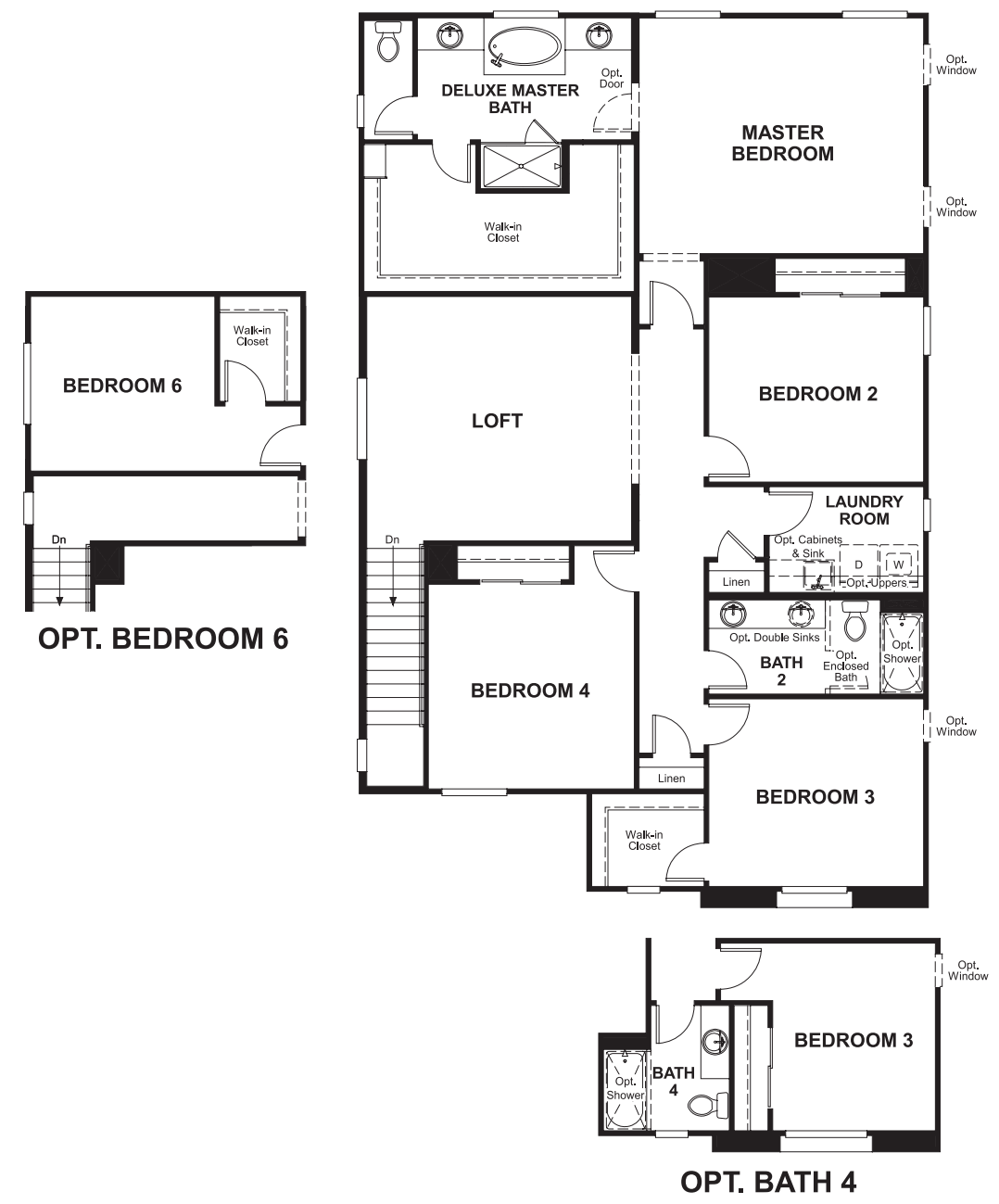
Bella Strada
BETHANY

Approx. square feet: 2,950-3,100
Stories: 2
Bedrooms: 4
Garage: 2-car
Plan Number: N29B

Floor Plan
Main Floor



Floor Plan
Second Floor



THIS PLAN'S PROJECTED HERS® INDEX = 68*
Projected Rating Based on Plans – Field Confirmation Required

How does this floor plan rate?
Take a look: **100** = Standard new home* **130** = Typical resale home**
The lower the number, the better! Refer to the RESNET® HERS index brochure or go to www.RESNET.us for details.

What's a HERS® Index? HERS stands for Home Energy Rating System, a system created by RESNET® to measure home energy efficiency.[^]
A Projected HERS index or rating is a computer simulation performed prior to construction by a third-party HERS rater using RESNET-accredited rating software, rated feature and specification data derived from home plans, features and specifications, and other data selected or assumed by the rater. The projected HERS index is approximate and is subject to change without notice. Actual results will vary.

*This information is presented for education purposes only. The HERS index for a confirmed rating will be determined by a third-party HERS rater based on data gathered from on-site observations and, if required, testing of rated features for a home as featured, optioned, located, oriented and/or built.
+Standard new home is based on the RESNET® Reference Home definition with a HERS® index of 100 (based on the 2006 International Energy Conservation Code).
++Typical resale home is based on the U.S. Department of Energy definition with a HERS® index of 130.

[^]RESNET® has developed the HERS® index to indicate the comparative efficiencies of homes. It is no guarantee that energy efficiencies will be achieved.