

Sienna Hills II
BEVERLY



Elevation A

Approx. square feet: 2,600
Stories: 2
Bedrooms: 3 - 5
Garage: 2-car
Plan Number: P602

Anchored by a spacious great room with a covered patio on one side and a charming kitchen on the other, the Beverly plan offers comfortable living with elegant touches throughout. Other highlights include a two-story entry, a private study, a dining room, a loft and three upstairs bedrooms—including a master suite with an expansive walk-in closet. Enjoy numerous personalization options, such as a gourmet kitchen and additional bedrooms.

Available elevations:



Elevation A



Elevation B



Elevation C

COMMUNITY LOCATION

21284 East Almeria Road
 Buckeye, AZ 85396
 877-444-1485

HOME GALLERY

16427 North Scottsdale Road, Suite 175
 Scottsdale, AZ 85254
 877-444-1485



COMMUNITY LOCATION

21284 East Almeria Road
 Buckeye, AZ 85396
 877-444-1485

HOME GALLERY

16427 North Scottsdale Road, Suite 175
 Scottsdale, AZ 85254
 877-444-1485

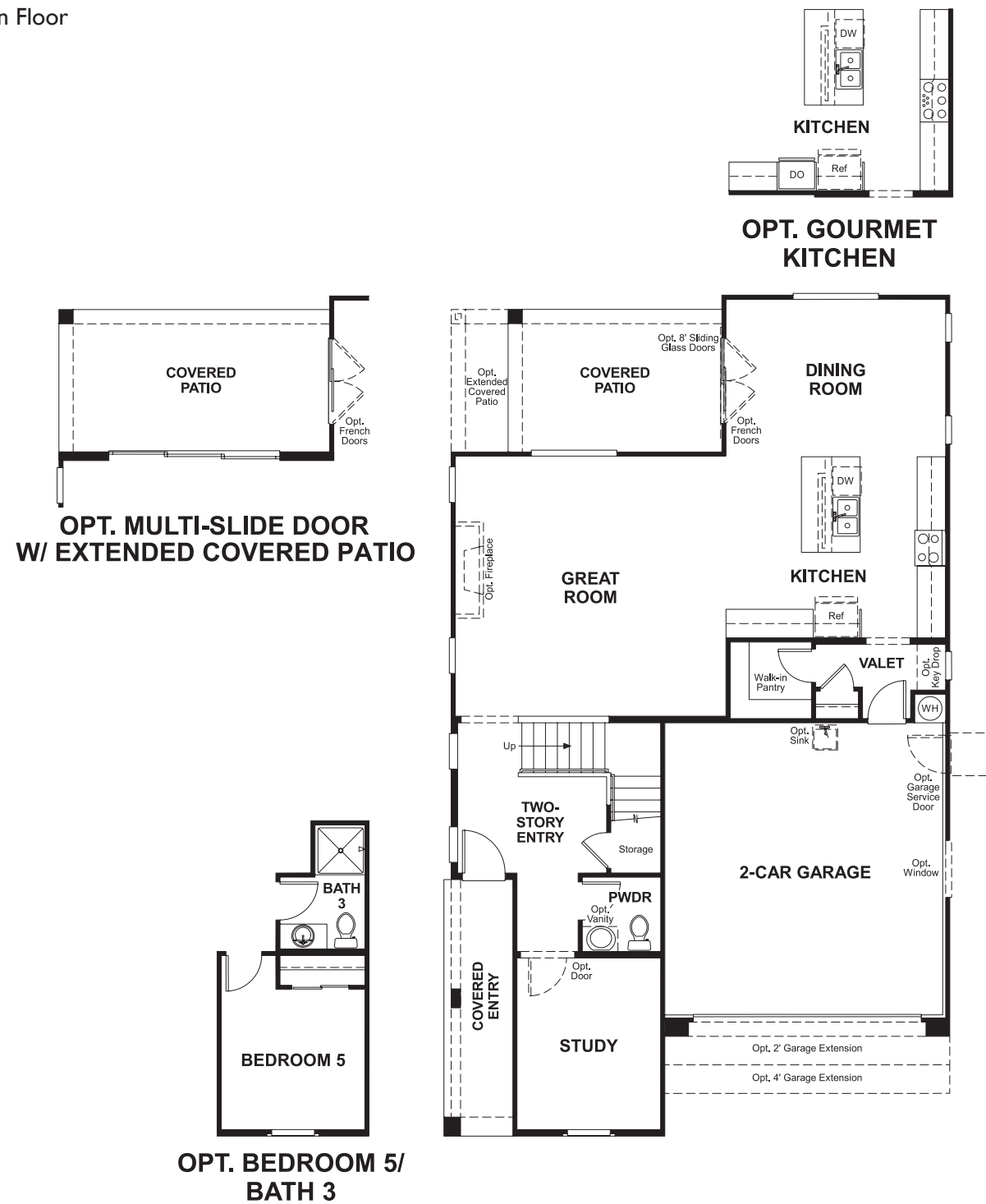


Sienna Hills II
BEVERLY

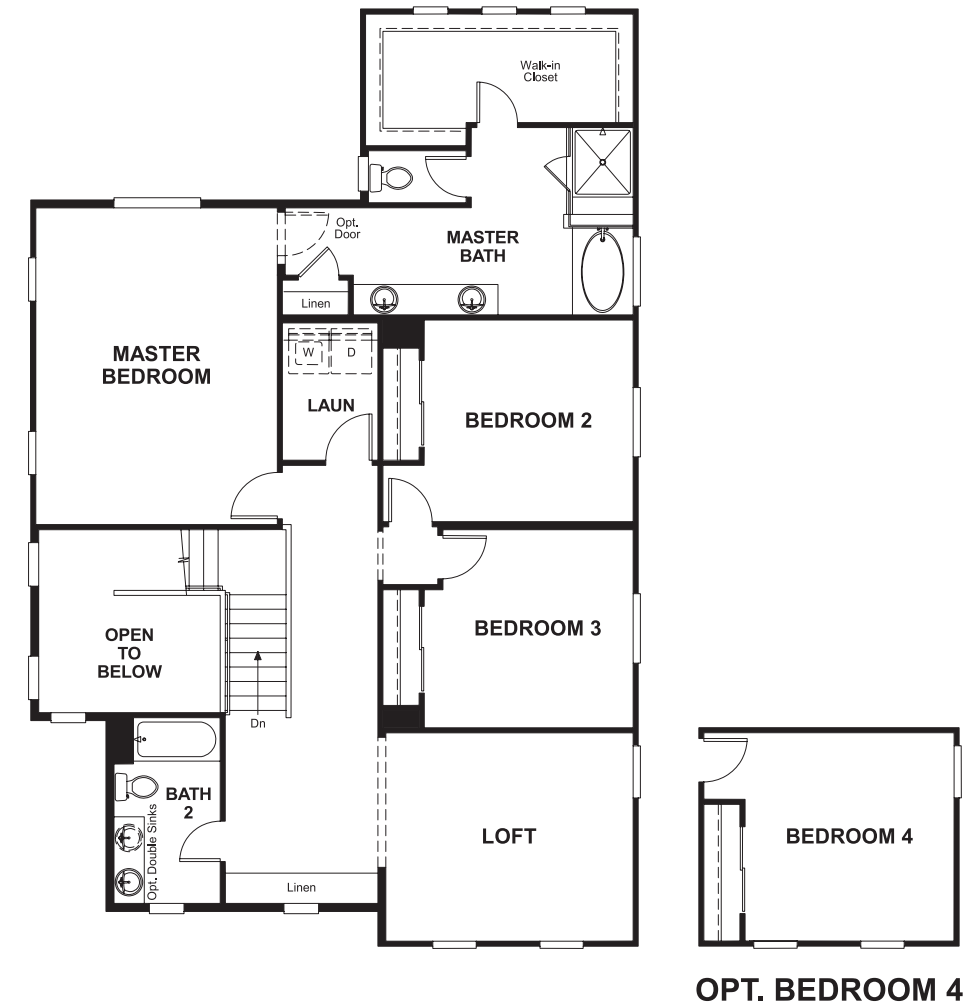
Approx. square feet: 2,600
Stories: 2
Bedrooms: 3 - 5

Garage: 2-car
Plan Number: P602

Floor Plan
Main Floor



Floor Plan
Second Floor



THIS PLAN'S PROJECTED HERS® INDEX = 66*
Projected Rating Based on Plans – Field Confirmation Required

How does this floor plan rate?
Take a look: **100** = Standard new home* **130** = Typical resale home**
The lower the number, the better! Refer to the RESNET® HERS index brochure or go to www.RESNET.us for details.

What's a HERS® Index? HERS stands for Home Energy Rating System, a system created by RESNET® to measure home energy efficiency.[^]
A Projected HERS index or rating is a computer simulation performed prior to construction by a third-party HERS rater using RESNET-accredited rating software, rated feature and specification data derived from home plans, features and specifications, and other data selected or assumed by the rater. The projected HERS index is approximate and is subject to change without notice. Actual results will vary.

*This information is presented for education purposes only. The HERS index for a confirmed rating will be determined by a third-party HERS rater based on data gathered from on-site observations and, if required, testing of rated features for a home as featured, optioned, located, oriented and/or built.
+Standard new home is based on the RESNET® Reference Home definition with a HERS® index of 100 (based on the 2006 International Energy Conservation Code).
++Typical resale home is based on the U.S. Department of Energy definition with a HERS® index of 130.

[^]RESNET® has developed the HERS® index to indicate the comparative efficiencies of homes. It is no guarantee that energy efficiencies will be achieved.