

Ocean Terrace
BEVERLY



Elevation J

Approx. square feet: 2,600
Stories: 2
Bedrooms: 3 - 5
Garage: 2-car
Plan Number: J602

From its quiet study to its spacious great room and charming gourmet kitchen with center island, walk-in pantry and adjacent dining room, the Beverly plan is designed for comfort and convenience. Upstairs, you'll find a laundry, a loft and three generous bedrooms, including a luxurious master suite with deluxe bath and expansive walk-in closet.

Available elevations:



Elevation J



Elevation K



Elevation L

COMMUNITY LOCATION

4082 Seaside Drive
 Jacksonville Beach, FL 32250
 904-541-2555

HOME GALLERY

1560 Wells Road, Building A, Suite 105
 Orange Park, FL 32703
 800-221-3014



COMMUNITY LOCATION

4082 Seaside Drive
 Jacksonville Beach, FL 32250
 904-541-2555

HOME GALLERY

1560 Wells Road, Building A, Suite 105
 Orange Park, FL 32703
 800-221-3014

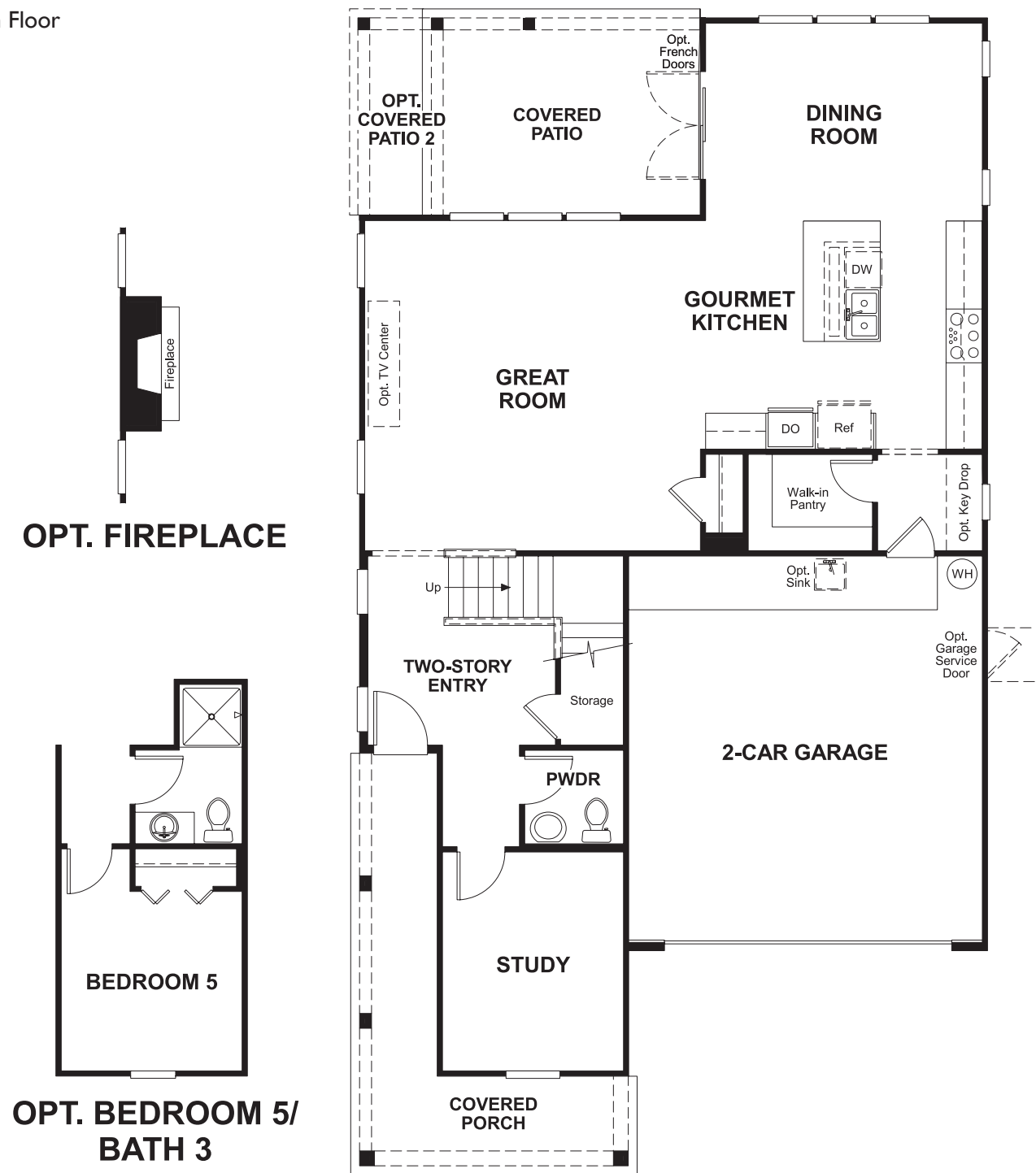


Ocean Terrace
BEVERLY

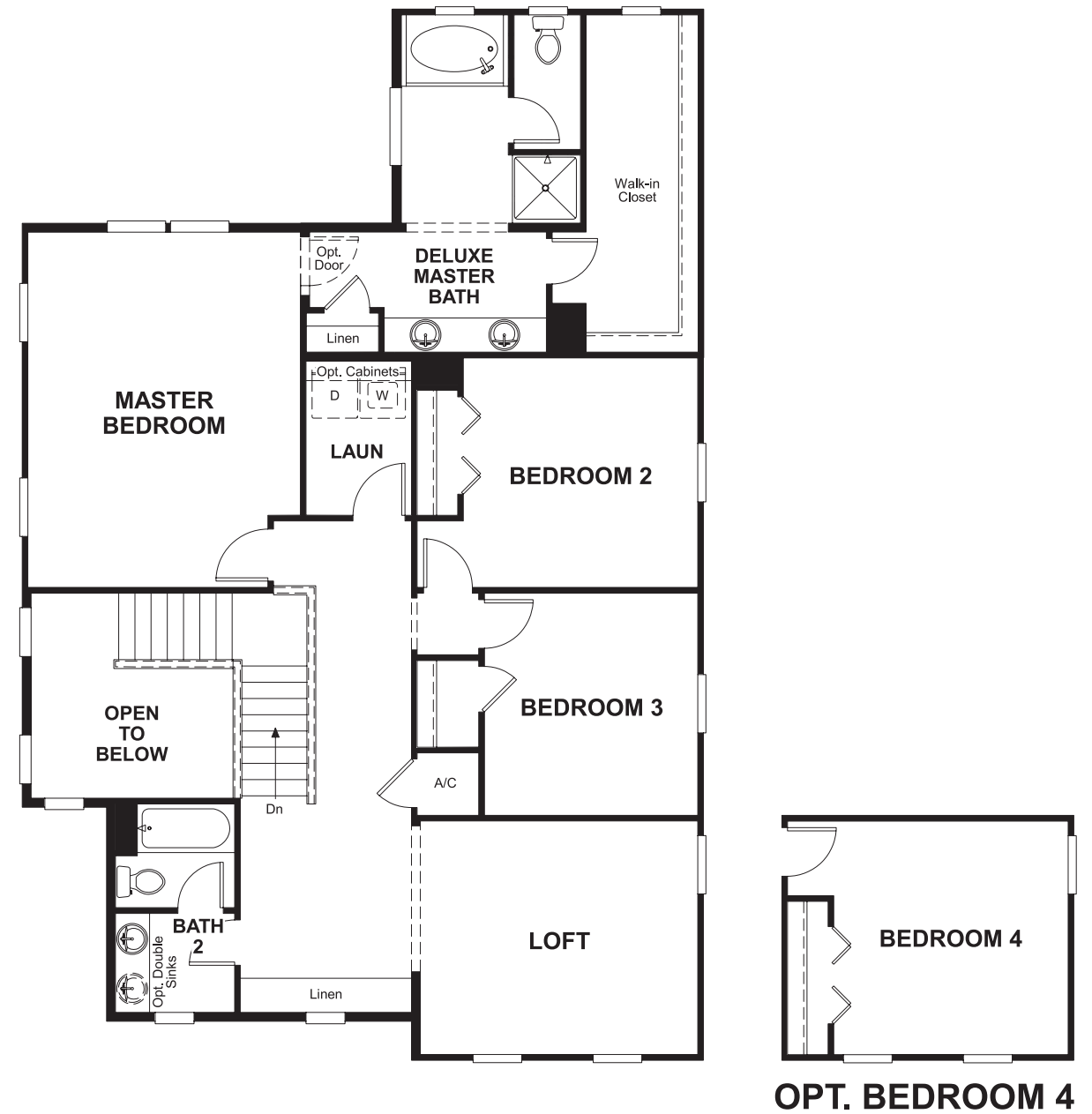
Approx. square feet: 2,600
Stories: 2
Bedrooms: 3 - 5

Garage: 2-car
Plan Number: J602

Floor Plan
Main Floor



Floor Plan
Second Floor



**THIS PLAN'S PROJECTED
HERS® INDEX = 63***
Projected Rating Based on Plans – Field Confirmation Required

How does this floor plan rate?
Take a look: **100** = Standard new home* **130** = Typical resale home**
The lower the number, the better! Refer to the RESNET® HERS index brochure or go to www.RESNET.us for details.

What's a HERS® Index? HERS stands for Home Energy Rating System, a system created by RESNET® to measure home energy efficiency.[^]
A Projected HERS index or rating is a computer simulation performed prior to construction by a third-party HERS rater using RESNET-accredited rating software, rated feature and specification data derived from home plans, features and specifications, and other data selected or assumed by the rater. The projected HERS index is approximate and is subject to change without notice. Actual results will vary.

*This information is presented for education purposes only. The HERS index for a confirmed rating will be determined by a third-party HERS rater based on data gathered from on-site observations and, if required, testing of rated features for a home as featured, optioned, located, oriented and/or built.
+Standard new home is based on the RESNET® Reference Home definition with a HERS® index of 100 (based on the 2006 International Energy Conservation Code).
++Typical resale home is based on the U.S. Department of Energy definition with a HERS® index of 130.

[^]RESNET® has developed the HERS® index to indicate the comparative efficiencies of homes. It is no guarantee that energy efficiencies will be achieved.