

MAPLE CROSSING

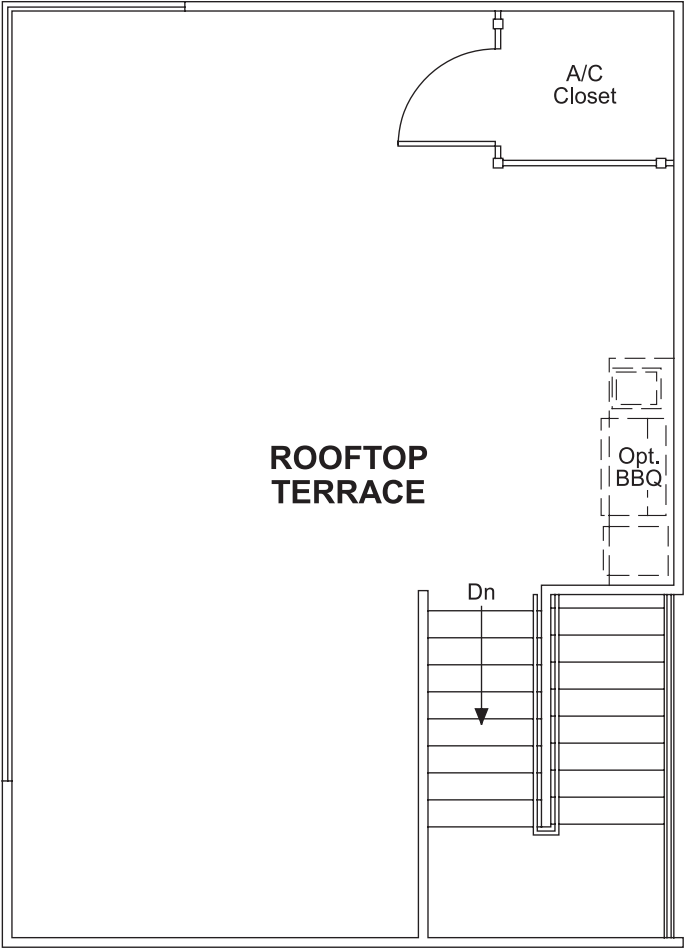
MAPLE CROSSING

MAPLE CROSSING BOWERY

APPROX. SQUARE FEET: 1,650
STORIES: 3
BEDROOMS: 2 - 3
GARAGE: 3-CAR

MAPLE CROSSING BOWERY


FLOOR PLAN ROOFTOP TERRACE



APPROX. SQUARE FEET: 1,650
STORIES: 3
BEDROOMS: 2 - 3
GARAGE: 3-CAR


The Bowery plan offers the ultimate in sophistication, with a modern, open layout and a relaxing rooftop deck. The main floor features open living and dining rooms and a well-appointed kitchen with an immense center island. You'll also appreciate the convenient tech center and beautiful balcony. Upstairs, enjoy a luxurious master suite and two additional bedrooms, which can be converted to a second master suite.





COMMUNITY LOCATION
2136 Evans Way
Costa Mesa, CA 92627
949-734-4285

HOME GALLERY
5171 California Avenue, Suite 110
Irvine, CA 92617
800-852-9714



COMMUNITY LOCATION
2136 Evans Way
Costa Mesa, CA 92627
949-734-4285

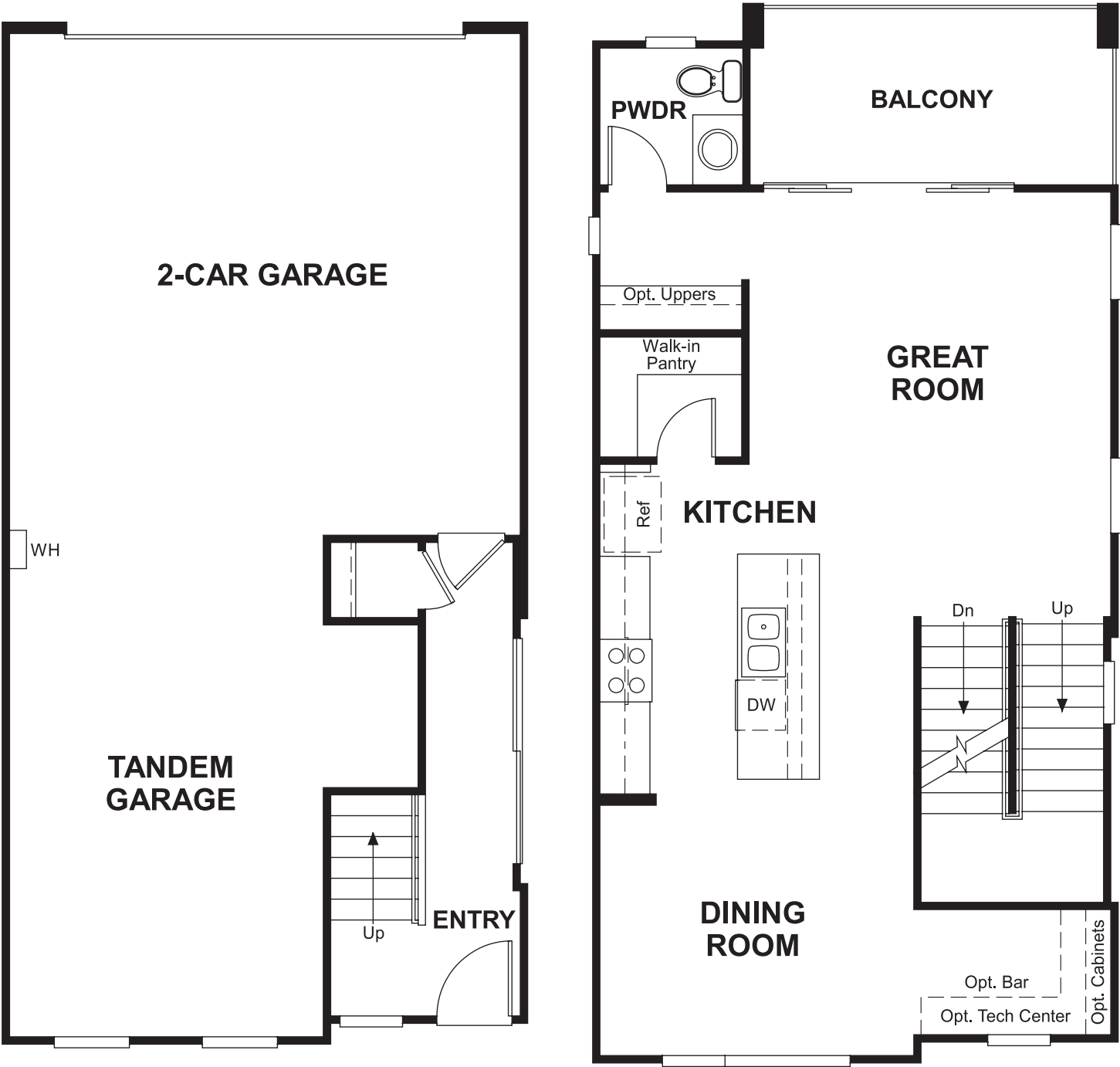
HOME GALLERY
5171 California Avenue, Suite 110
Irvine, CA 92617
800-852-9714

[RICHMONDAMERICAN.COM/MAPLE](https://richmondamerican.com/maple)

Floorplans and renderings are conceptual drawings and may vary from actual plans and homes as built. Options and features may not be available on all homes and are subject to change without notice. Actual homes may vary from photos and/or drawings which show upgraded landscaping and may not represent the lowest-priced homes in the community. Features may include optional upgrades and may not be available on all homes. Square footage numbers are approximate and are subject to change without notice. Prices, specifications and availability subject to change without notice. ©2016 Richmond American Homes, Richmond American Homes of Maryland, Inc. California Department of Real Estate - Real Estate Broker, Corporation License Number 01842595. 07/05/2016

Floorplans and renderings are conceptual drawings and may vary from actual plans and homes as built. Options and features may not be available on all homes and are subject to change without notice. Actual homes may vary from photos and/or drawings which show upgraded landscaping and may not represent the lowest-priced homes in the community. Features may include optional upgrades and may not be available on all homes. Square footage numbers are approximate and are subject to change without notice. Prices, specifications and availability subject to change without notice. ©2016 Richmond American Homes, Richmond American Homes of Maryland, Inc. California Department of Real Estate - Real Estate Broker, Corporation License Number 01842595. 07/05/2016

FLOOR PLAN
LOWER & MAIN FLOOR



FLOOR PLAN
SECOND FLOOR



THIS PLAN'S PROJECTED
HERS® INDEX = 74 *
Projected Rating Based on Plans – Field Confirmation Required

How does this floor plan rate?
Take a look: **100** = Standard new home* **130** = Typical resale home**
The lower the number, the better! Refer to the RESNET® HERS index brochure or go to www.RESNET.us for details.

What's a HERS® Index? HERS stands for Home Energy Rating System, a system created by RESNET® to measure home energy efficiency.^
A Projected HERS index or rating is a computer simulation performed prior to construction by a third-party HERS rater using RESNET-accredited rating software, rated feature and specification data derived from home plans, features and specifications, and other data selected or assumed by the rater. The projected HERS index is approximate and is subject to change without notice. Actual results will vary.

*This information is presented for education purposes only. The HERS index for a confirmed rating will be determined by a third-party HERS rater based on data gathered from on-site observations and, if required, testing of rated features for a home as featured, optioned, located, oriented and/or built.
+Standard new home is based on the RESNET® Reference Home definition with a HERS® index of 100 (based on the 2006 International Energy Conservation Code).
++Typical resale home is based on the U.S. Department of Energy definition with a HERS® index of 130.

^RESNET® has developed the HERS® index to indicate the comparative efficiencies of homes. It is no guarantee that energy efficiencies will be achieved.