

Bella Strada
BRADFORD



Elevation A

Approx. square feet: 2,850
Stories: 2
Bedrooms: 4 - 5
Garage: 2-car
Plan Number: N603

The Bradford plan boasts an open main-floor layout, with a generous dining room, an inviting great room and a spacious kitchen with center island and sliding glass doors leading onto the covered patio. You'll also appreciate the quiet study, which can be optioned as a fifth bedroom. Upstairs, you'll find a versatile loft and a lavish master suite with two walk-in closets and generous bath.

Available elevations:



Elevation A - Spanish



Elevation B - Italian



Elevation C - Craftsman

COMMUNITY LOCATION

9601 Philta Way
 Elk Grove, CA 95757
 916-512-2003

HOME GALLERY

One Harbor Center Suite 150
 Suisun City, CA 94585
 800-852-9714



COMMUNITY LOCATION

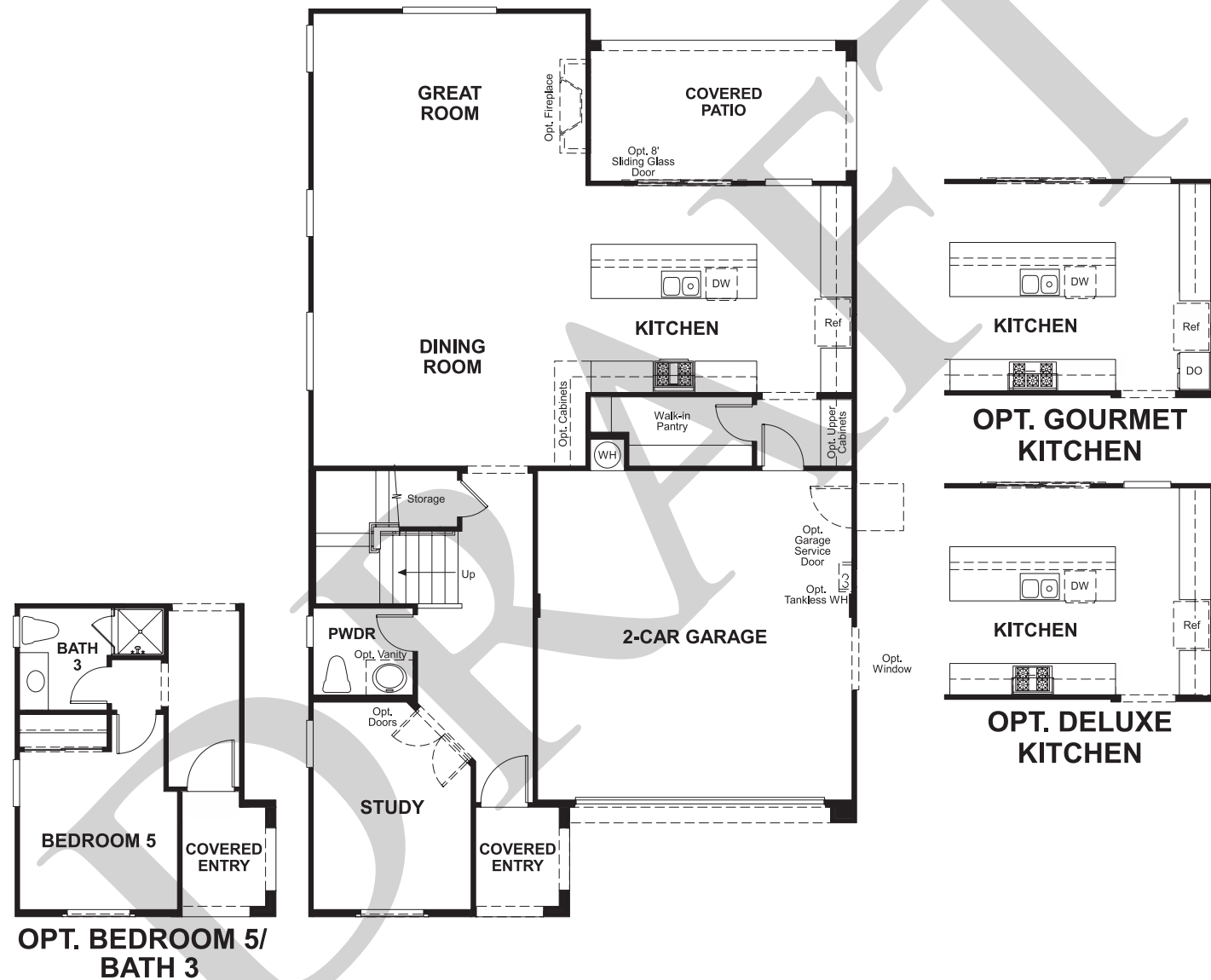
9601 Philta Way
 Elk Grove, CA 95757
 916-512-2003

HOME GALLERY

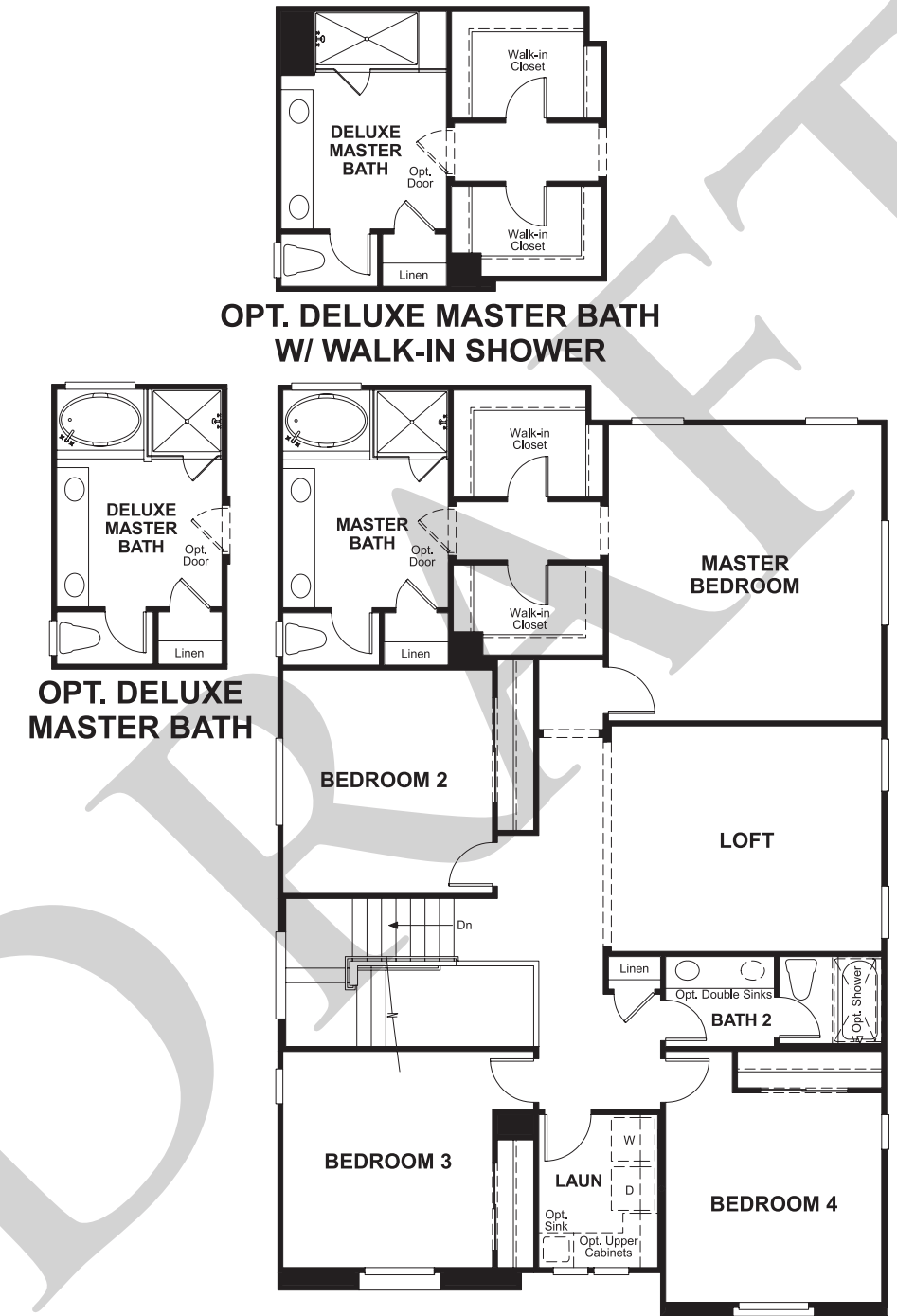
One Harbor Center Suite 150
 Suisun City, CA 94585
 800-852-9714



Floor Plan
Main Floor



Floor Plan
Second Floor



**THIS PLAN'S PROJECTED
HERS® INDEX = 69***
Projected Rating Based on Plans – Field Confirmation Required

How does this floor plan rate?
Take a look: **100** = Standard new home* **130** = Typical resale home**
The lower the number, the better! Refer to the RESNET® HERS index brochure or go to www.RESNET.us for details.

What's a HERS® Index? HERS stands for Home Energy Rating System, a system created by RESNET® to measure home energy efficiency.[^]
A Projected HERS index or rating is a computer simulation performed prior to construction by a third-party HERS rater using RESNET-accredited rating software, rated feature and specification data derived from home plans, features and specifications, and other data selected or assumed by the rater. The projected HERS index is approximate and is subject to change without notice. Actual results will vary.

*This information is presented for education purposes only. The HERS index for a confirmed rating will be determined by a third-party HERS rater based on data gathered from on-site observations and, if required, testing of rated features for a home as featured, optioned, located, oriented and/or built.
+Standard new home is based on the RESNET® Reference Home definition with a HERS® index of 100 (based on the 2006 International Energy Conservation Code).
**Typical resale home is based on the U.S. Department of Energy definition with a HERS® index of 130.

[^]RESNET® has developed the HERS® index to indicate the comparative efficiencies of homes. It is no guarantee that energy efficiencies will be achieved.