

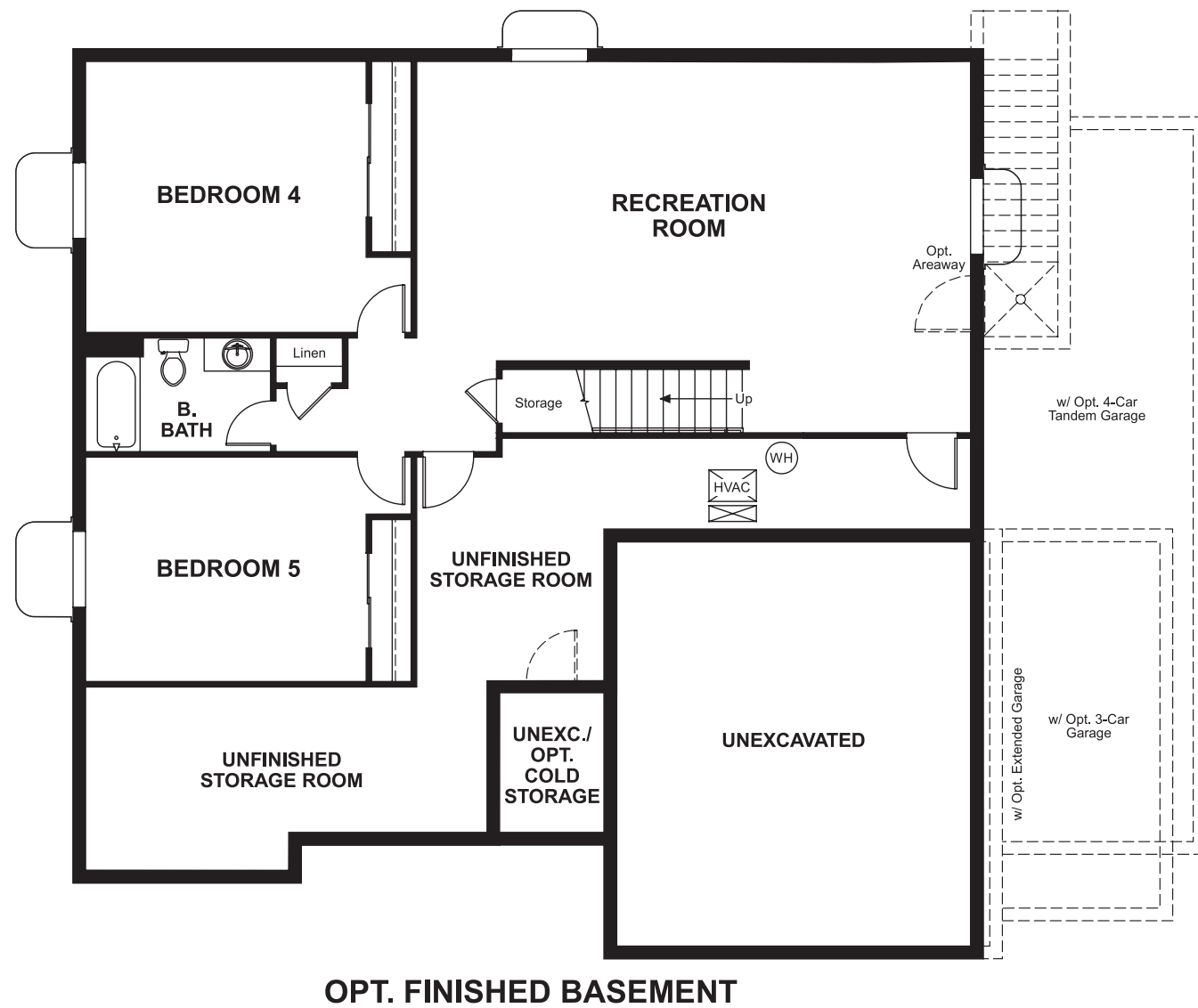
Picket Lane
BRYCE

Approx. square feet: 1,650
Stories: 1
Bedrooms: 3 - 5

Garage: 2- to 4-car
Plan Number: U168

Picket Lane
BRYCE

Floor Plan
Basement



Elevation A

Available elevations:



Elevation A



Elevation B



Elevation C



Elevation D



Elevation E



Elevation F

Approx. square feet: 1,650
Stories: 1
Bedrooms: 3 - 5
Garage: 2- to 4-car
Plan Number: U168

The ranch-style Bryce plan offers single-floor comfort and convenience—from the open family room, breakfast nook and kitchen to the inviting master suite with a private bath and generous walk-in closet. Options include a gourmet kitchen, covered patio, deluxe master bathroom, a fireplace in the family room and a study in lieu of a bedroom.

COMMUNITY LOCATION
6497 North Valley Point Way
Stansbury Park, UT 84074
801-545-3429

HOME GALLERY
8221 Gateway Overlook Drive
Elkridge, MD 21075
801-545-3435



COMMUNITY LOCATION
6497 North Valley Point Way
Stansbury Park, UT 84074
801-545-3429

HOME GALLERY
8221 Gateway Overlook Drive
Elkridge, MD 21075
801-545-3435

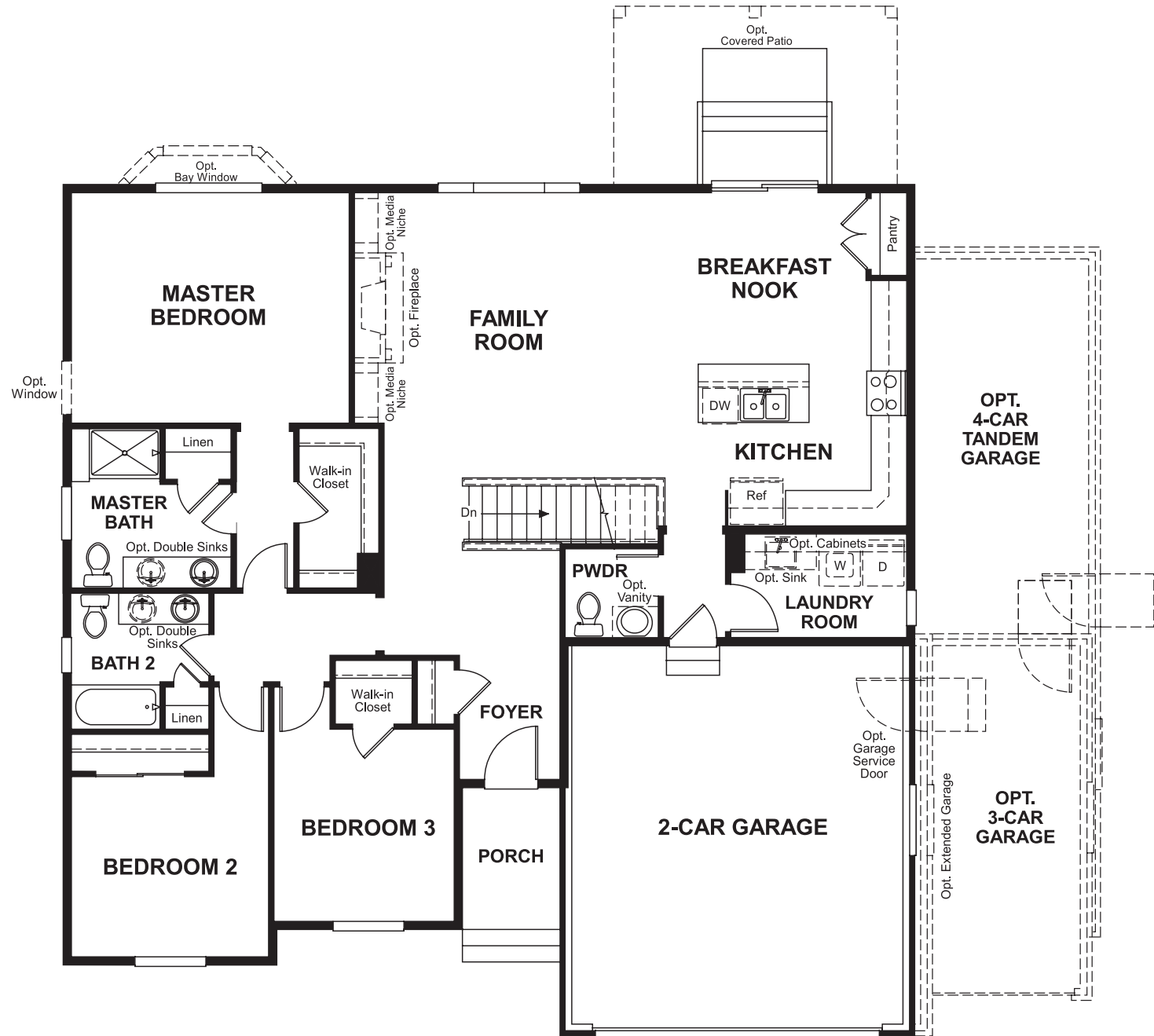


Picket Lane
BRYCE

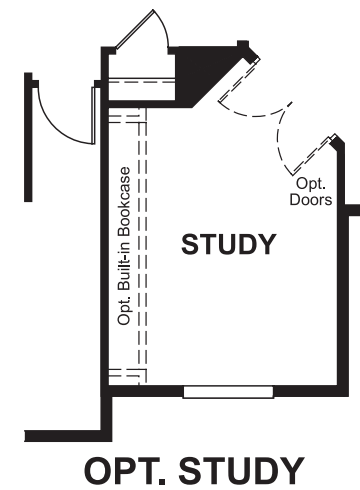
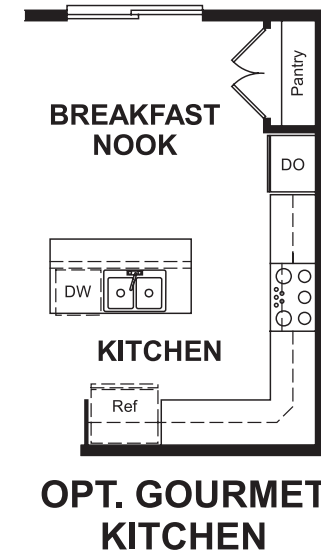
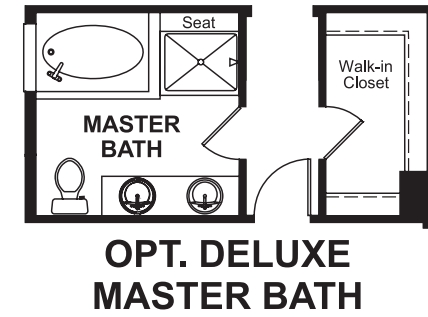
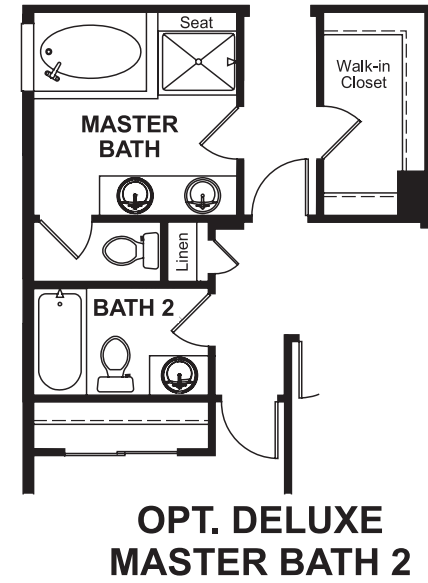
Approx. square feet: 1,650
Stories: 1
Bedrooms: 3 - 5

Garage: 2- to 4-car
Plan Number: U168

Floor Plan
Main Floor



Floor Plan
Main Floor Options



THIS PLAN'S PROJECTED HERS® INDEX = 64*
Projected Rating Based on Plans – Field Confirmation Required

How does this floor plan rate?

Take a look: **100** = Standard new home* **130** = Typical resale home**
The lower the number, the better! Refer to the RESNET® HERS index brochure or go to www.RESNET.us for details.

What's a HERS® Index? HERS stands for Home Energy Rating System, a system created by RESNET® to measure home energy efficiency.†

A Projected HERS index or rating is a computer simulation performed prior to construction by a third-party HERS rater using RESNET-accredited rating software, rated feature and specification data derived from home plans, features and specifications, and other data selected or assumed by the rater. The projected HERS index is approximate and is subject to change without notice. Actual results will vary.

*This information is presented for education purposes only. The HERS index for a confirmed rating will be determined by a third-party HERS rater based on data gathered from on-site observations and, if required, testing of rated features for a home as featured, optioned, located, oriented and/or built.
+Standard new home is based on the RESNET® Reference Home definition with a HERS® index of 100 (based on the 2006 International Energy Conservation Code).
++Typical resale home is based on the U.S. Department of Energy definition with a HERS® index of 130.

†RESNET® has developed the HERS® index to indicate the comparative efficiencies of homes. It is no guarantee that energy efficiencies will be achieved.