

Skyline Ridge
BURTON



Elevation A

Approx. square feet: 2,200
Stories: 2
Bedrooms: 4 - 5
Garage: 2-car
Plan Number: L222

The Burton combines inviting gathering spaces with comfortable retreats. The main floor features a living room off the entryway and an open great room adjacent to the kitchen and breakfast nook. The upstairs boasts a versatile loft area and a spacious master suite. Enjoy options such as a covered patio and a dining room in lieu of the living room.

Available elevations:



Elevation A



Elevation B



Elevation C

COMMUNITY LOCATION

Grand Canyon Drive and Ford Avenue
 Las Vegas, NV 89178
 702-638-4440

HOME GALLERY

7770 South Dean Martin Drive, Suite 308
 Las Vegas, NV 89139
 702-617-8400



COMMUNITY LOCATION

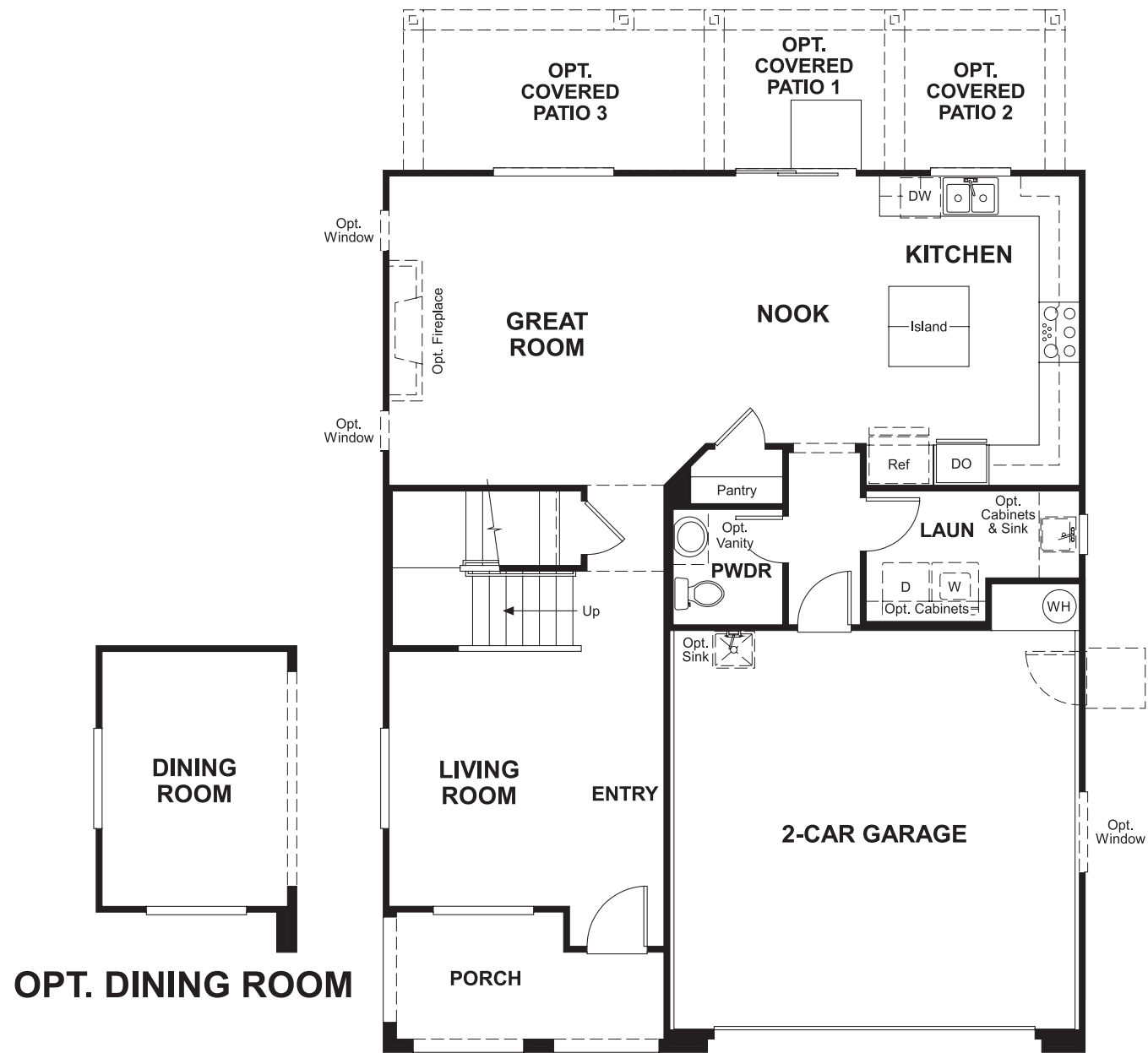
Grand Canyon Drive and Ford Avenue
 Las Vegas, NV 89178
 702-638-4440

HOME GALLERY

7770 South Dean Martin Drive, Suite 308
 Las Vegas, NV 89139
 702-617-8400



Floor Plan
Main Floor



Floor Plan
Second Floor

